

Pitch:1.27x1.27mm(0.05 " x0.05 " )  
 Ejector Header Right Angle Type

**ELETE**  
 Professional Connecting Solutions  
 EJDR01 Series

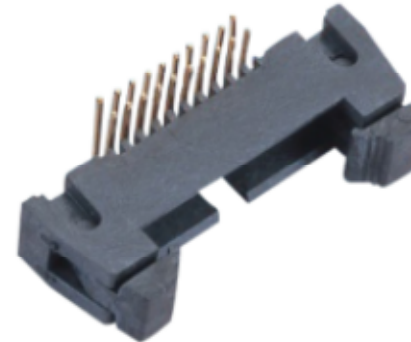
**Specifications**

Current Rating:1.0 Ampere  
 Insulation Resistance:1000MΩ Min  
 Dielectric Withstanding:500V AC  
 Contact Resistance:20mΩ Max  
 Operating Temperature:-40℃ to +105℃

**Materials**

Contact Material: Brass  
 Insulation Material: Polyester,UL 94V-0  
 LCP/NL6T

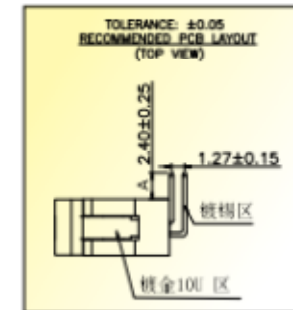
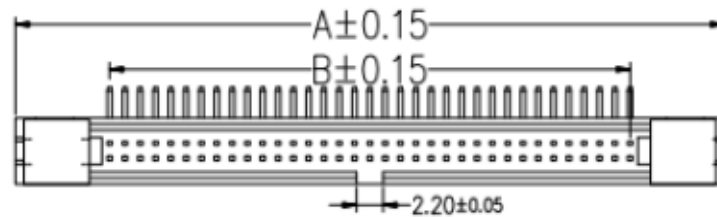
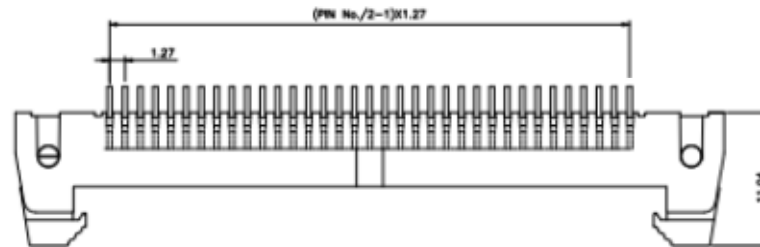
All material RoHS&Reach Compliant  
 Halogen-free is available



Mating with



IDC connector  
 IDCIF



No. of Pins/Row	Dimension Information			No. of Pins/Row	Dimension Information			No. of Pins/Row	Dimension Information		
	A	B	C		A	B	C		A	B	C
04	3.81	19.58	14.08	08	8.89	24.66	19.16	17	20.32	36.09	30.59
05	5.08	20.85	15.35	10	11.43	27.2	21.7	20	24.14	39.9	34.4
06	6.35	22.12	16.62	13	15.24	31.01	25.51	25	30.48	46.25	40.75
07	7.62	23.39	17.89	15	17.78	33.55	28.05	30	36.83	52.6	47.1