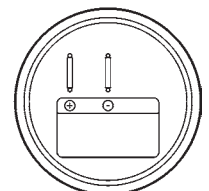
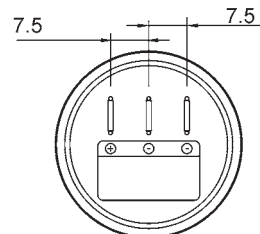
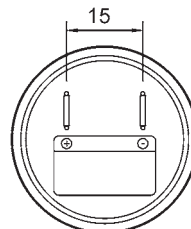
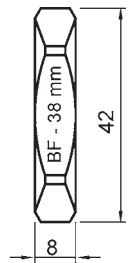
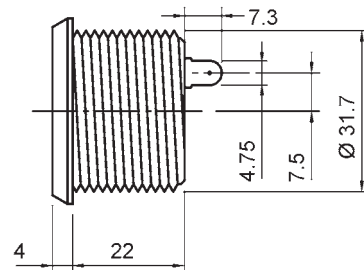
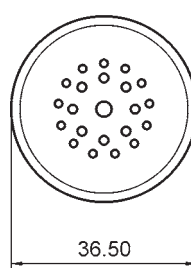
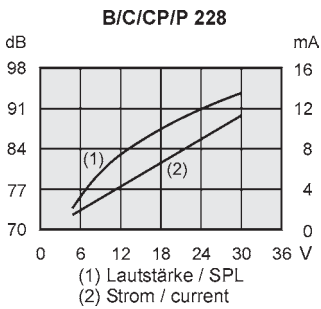


Buzzer For Panel Mounting

B/C 228
 B/CP 228
 B/P 228



Technische Daten / technical data:	B/C 228	B/CP 228	B/P 228
Betriebsspannungsbereich / operating voltage range (DC) (V)	5...28	5...28	5...28
Nennspannung / rated voltage (DC) (V)	12	12	12
Nennstrom / rated current (mA)	≤ 18	≤ 18	≤ 18
Frequenz / frequency (kHz)	3.0 ± 0.5	3.0 ± 0.5	3.0 ± 0.5
Lautstärke / sound pressure level (SPL) (dB/1 m)	85 ± 3	85 ± 3	85 ± 3
Tonart / tone	konstant continuous	konstant / Pulston continuous / pulse tone	Pulston pulse tone
Betriebstemperatur / operating temperature (°C)	-20...+65	-20...+65	-20...+65
Lagertemperatur / storage temperature (°C)	-40...+75	-40...+75	-40...+75
Gewicht / weight (g)	40	40	40
Montage / mounting Einlochmontage / single hole mounting (mm)	ø 32	ø 32	ø 32
Anschlüsse / connection Flachstecker / flatplug (mm)	4,8	4,8	4,8