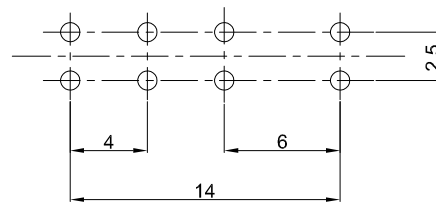
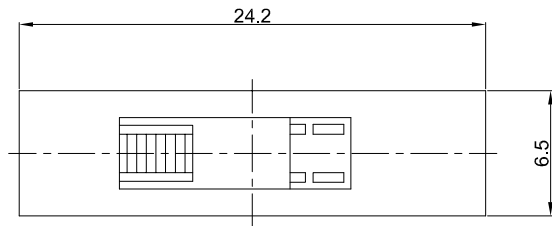
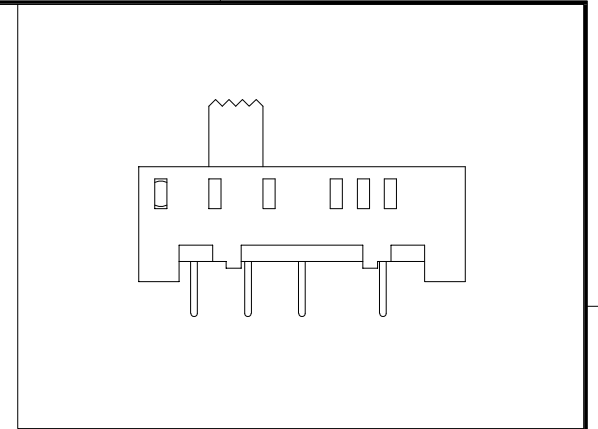


A B C D E



PCB REFERENCE DIAGRAM
TOLERANCE:±0.05



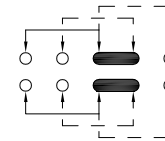
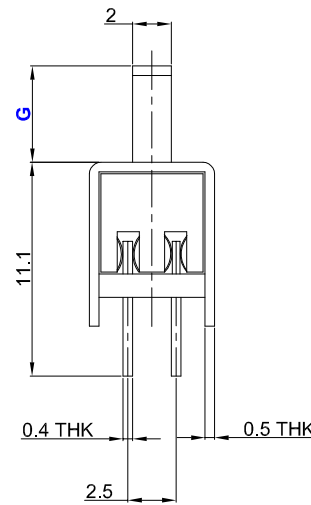
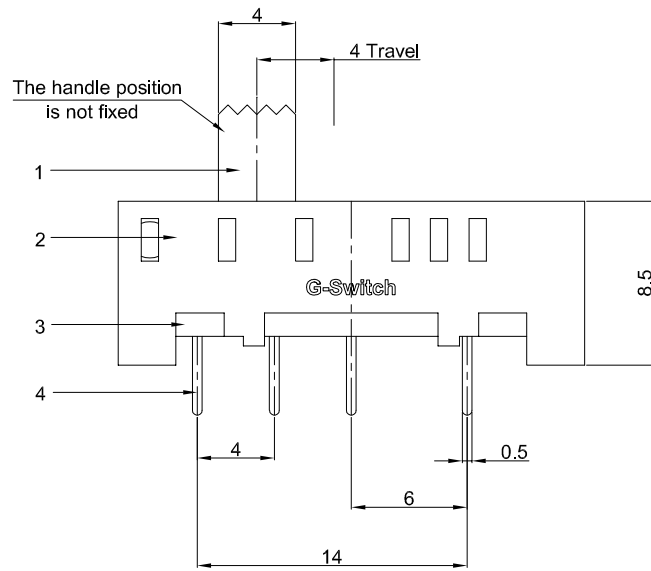
SS-23H06-GXXX

SS: Straight shank

G-Switch P/N

Switch Height(mm)

- G040=4.0 G050=5.0
- G060=6.0 G070=7.0
- G080=8.0 G090=9.0
- G010=10.0



CIRCUIT DIAGRAM

G-Switch Specification:

1. Operating temperature range: -40°C ~ +85°C
2. Rating: 0.3A, 50V DC
3. Insulation resistance: 100MΩ min. 100V DC
4. Dielectric strength: 500V AC for 1 min
5. Contact resistance: 100mΩ max.
6. Terminals arrangement: 2P3T
7. Travel: 4.0±0.2mm
8. Switch lifetime: 10,000Cycles

7	STEEL BALL	STEEL	NATURAL
6	SPRING	STEEL WIRE	NATURAL
5	CONTACT	PBS STRIP	Ag PLATED
4	TERMINAL	COPPER ALLOY	Ag PLATED
3	BASE	PHENOLIC RESIN	NATURAL
2	FRAME	STEEL STRIP	Ni PLATED
1	KNOB	POM	BLACK
NO.	PART NAME	MATERIAL	REMARK



SCALE: 1:1 UNIT: mm
SIZE: A4

Unless otherwise General Tolerance:

WITHIN 1.5 ±0.10
OVER 1.5 ±0.20
X* ±5°

Title: Vertical Slide Switch
DIP 24.2×6.5×H8.5mm

Molde Code: SS-23H06-GXXX

DRAWN	CHECKED	APPROVED	DATE
Jiang	Xia	Chen	2024.03.10



REV: A0 SHEET: 1/1

A B C D E