

Pitch:1.27x1.27mm(0.05 " x0.05 ")
 Female Header W/P And Local Peg S.M.T Type

ELETE
 Professional Connecting Solutions
 HFIDM44-P048 Series

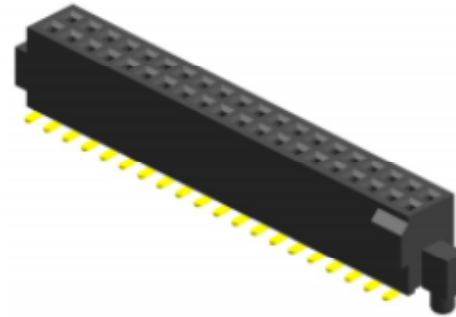
Specifications

Current Rating:1.0 Ampere
 Insulation Resistance:1000MΩ Min
 Dielectric Withstanding:300V AC
 Contact Resistance:20mΩ Max
 Operating Temperature:-40℃ to +105℃

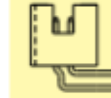
Materials

Contact Material: Phosphor Bronze
 Insulation Material: Polyester,UL 94V-0
 LCP/NL6T

All material RoHS&Reach Compliant
 Halogen-free is available



Mating with



BXIDR03



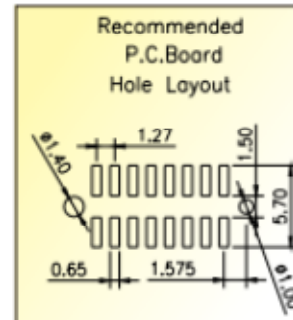
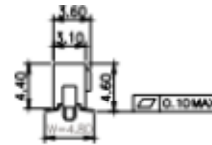
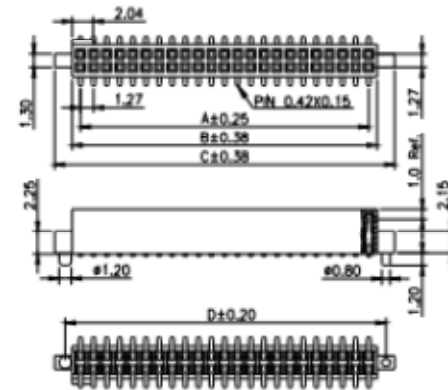
BXIDP03



BXIDSXX



BXIDM11



PS:Suggested Mating Pin Length:2.0~4.2mm

No. of Pins/Row	Dimension Information				No. of Pins/Row	Dimension Information				No. of Pins/Row	Dimension Information			
	A	B	C	D		A	B	C	D		A	B	C	D
04	3.81	5.43	8.83	8.96	20	24.13	25.75	29.15	27.28	36	44.45	46.07	49.47	47.60
05	5.08	6.70	10.10	8.23	21	25.40	27.02	30.42	28.55	37	45.72	47.34	50.74	48.87
06	6.35	7.97	11.37	9.50	22	26.67	28.29	31.69	29.82	38	46.99	48.61	52.01	50.14
07	7.62	9.24	12.64	10.77	23	27.94	29.56	32.96	31.09	39	48.26	49.88	53.28	51.41
08	8.89	10.51	13.91	12.04	24	29.21	30.83	34.23	32.36	40	49.53	51.15	54.55	52.68
09	10.16	11.78	15.18	13.31	25	30.48	32.10	35.50	33.63	41	50.80	52.42	55.82	53.95
10	11.43	13.05	16.45	14.58	26	31.75	33.37	36.77	34.90	42	52.07	53.69	57.09	55.22
11	12.70	14.32	17.72	15.85	27	33.02	34.64	38.04	36.17	43	53.34	54.96	58.36	56.49
12	13.97	15.59	18.99	17.12	28	34.29	35.91	39.31	37.44	44	54.61	56.23	59.63	57.76
13	15.24	16.86	20.26	18.39	29	35.56	37.18	40.58	38.71	45	55.88	57.50	60.90	59.03
14	16.51	18.13	21.53	19.66	30	36.83	38.45	41.85	39.98	46	57.15	58.77	62.17	60.30
15	17.78	19.40	22.80	20.93	31	38.10	39.72	43.12	41.25	47	58.42	60.04	63.44	61.57
16	19.05	20.67	24.07	22.20	32	39.37	40.99	44.39	42.52	48	59.69	61.31	64.71	62.84
17	20.32	21.94	25.34	23.47	33	40.64	42.26	45.66	43.79	49	60.96	62.58	65.98	64.11
18	21.59	23.21	26.61	24.74	34	41.91	43.53	46.93	45.06	50	62.23	63.85	67.25	65.38
19	22.86	24.48	27.88	26.01	35	43.18	44.80	48.20	46.33					