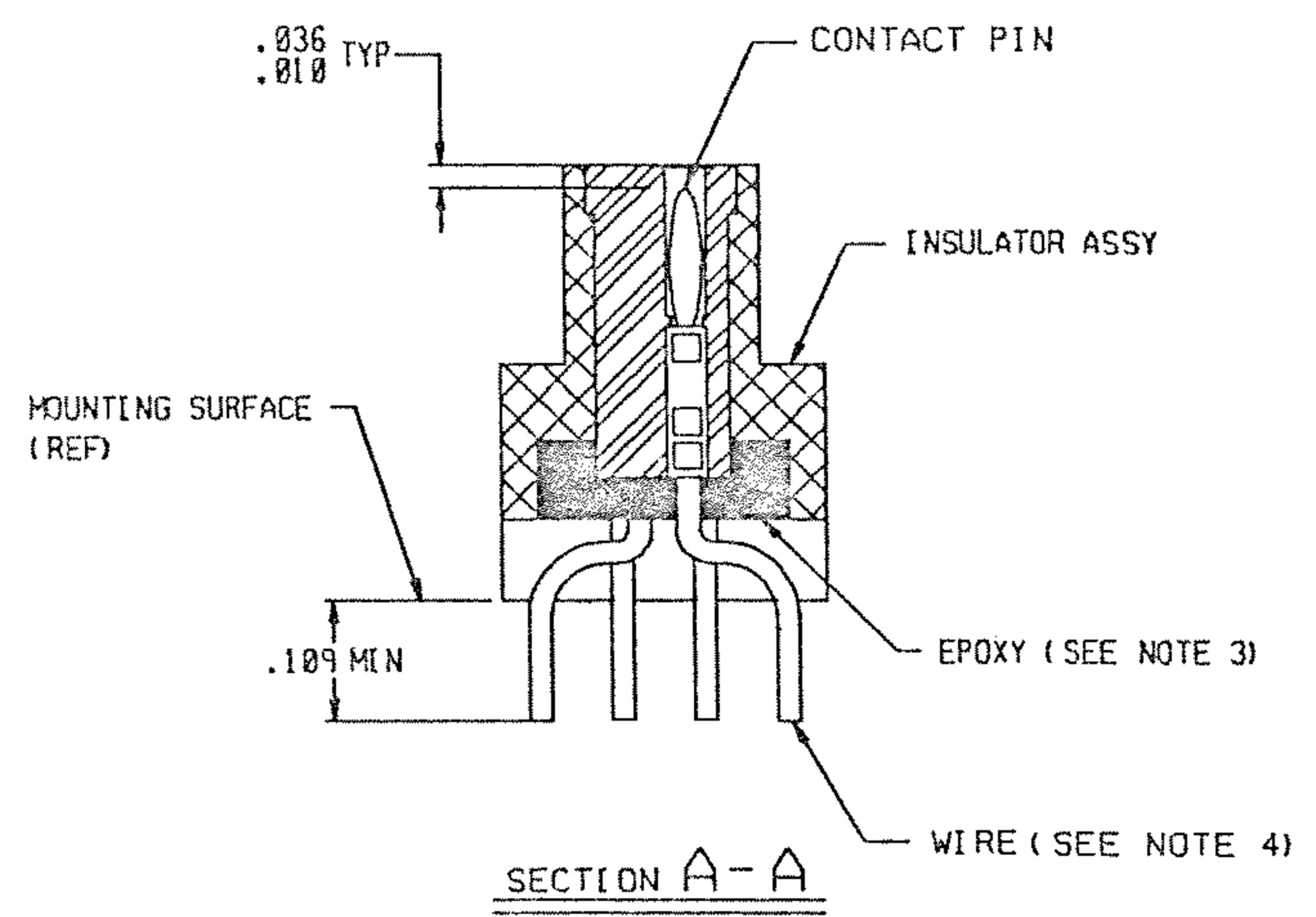


REVISION					
ZONE	LTR	ECN	DESCRIPTION	DATE	APPROVED
	B	41266	UPDATE DWG, SEE ECN.	2/5/10	JL
	C		UPDATE PER ECO-10-017486	8/25/10	PJS



UNLESS OTHERWISE SPECIFIED DIMENSIONS ARE IN INCHES. TOLERANCE ARE: FRACTIONS ± 1/8 DECIMALS .XX ± .01 .XXX ± .005 ANGLES ± 2°	APPROVALS		MALCO A MICRODOT COMPANY, INC. 306 PASADENA AVE., SO. PASADENA, CA 91030	PROD CODE 845 CODE M
	SIGNATURE	DATE		
	CHECKED			
	PROD. ENG.			
MATERIAL:			METAL SHELL 'D' CONNECTOR, PLUG MCK-**-P-37PST2 180 DEGREE WITHOUT T.B. BLOCK 094-5604-7003	
FINISH:	THIS DOCUMENT IS THE PROPERTY OF MALCO, A MICRODOT CO. USE OF THIS DOCUMENT OR ANY PART OF THEREOF IS STRICTLY FORBIDDEN WITHOUT THE EXPRESS WRITTEN PERMISSION OF MALCO, A MICRODOT COMPANY.	SIZE A	CODE IDENT NO. 98278	DRAWING NO. 2-1532142-0
		SCALE: NONE		SHEET 1 OF 1

- NOTES: UNLESS OTHERWISE SPECIFIED
- MARK PER TPD.
 - JACKNUT ASSEMBLIES AS SHOWN ARE ASSEMBLED ON FLANGE.
 - EPOXY AS SHOWN.
 - TERMINAL WIRES ARE TO BE SOLDER DIPPED UP TO MOUNTING SURFACE.
 - LEAD IDENTIFICATION AS SHOWN ARE REFERENCE ONLY. DO NOT APPEAR ON THE PART.
 - CRIMP LEADS INTO CONTACTS PER MEP302-05.