

## Low Power F0 Detect and Tracking LRA Haptic Driver

### Features

- 1MHz I2C Bus
- Integrated 3K Memory
- 12k/24k/48k input wave sampling rate
- F0 detect and tracking
- Advance autobrake engine integrated
- Playback mode:
  - Real time playback
  - Auto dynamic sine playback
  - Memory playback
  - Trigger playback
  - Cont playback
- Resistance-Based LRA Diagnostics
- Drive signal monitor for LRA protect
- Drive Compensation Over Battery Discharge
- Fast Start Up Time: 0.4ms
- Reused interrupt output pin
- Support automatically switch to standby mode
- Standby current: 2μA
- Shutdown current: <1μA
- Supply voltage range 2.7 to 5.5V
- Short-Circuit Protection, Over-Temperature Protection, Under-Voltage Protection
- AW8623XA included immersion IP license

### Applications

- Mobile phones
- Tablets
- Wearable Devices

### General Description

AW8623X is a low cost H-bridge, single chip LRA haptic driver, with F0 detecting and tracking based on BEMF, supporting real time playback, memory playback, Cont playback, and hardware pin triggered playback with fast start up time. All these make the AW8623X an ideal candidate for haptic driver.

AW8623X integrates a 3KByte SRAM for user-defined waveforms to achieve a variety of vibration experiences, supporting 3 sampling rate(12k/24k/48k) of waveforms loaded in SRAM, supporting output waveform sampling rate up-sampling to 48k.

AW8623X integrates an autobrake engine to suppress the aftershocks to zero for different drive waveforms (short or long) on different LRA motors.

AW8623X supports LRA fault diagnostic based on resistance measurement and protections of short-circuit, over-temperature and under-voltage.

AW8623X features configurable automatically switch to standby mode after haptic waveform playback finished. This can less quiescent power consumption. The RSTN pin provides further power saving by fully shut down the whole device. Reused interrupt output pin can detect real time FIFO status and the error status of the chip.

AW8623X features general settings are communicated via an I2C-bus interface.

#### Device Information

Device Name	Package	Body Size
AW86233QNR	QFN	2mmX2mmX0.5mm-12L
AW86234FCR	FCQFN	1.37mmX1.37mmX0.4mm-9L
AW86235CSR	WLCSP	1.03mmX1.03mmX0.557mm-9B
AW86233AQNR	QFN	2mmX2mmX0.5mm-12L
AW86234AFCR	FCQFN	1.37mmX1.37mmX0.4mm-9L
AW86235ACSR	WLCSP	1.03mmX1.03mmX0.557mm-9B

## Pin Configuration and Top Mark

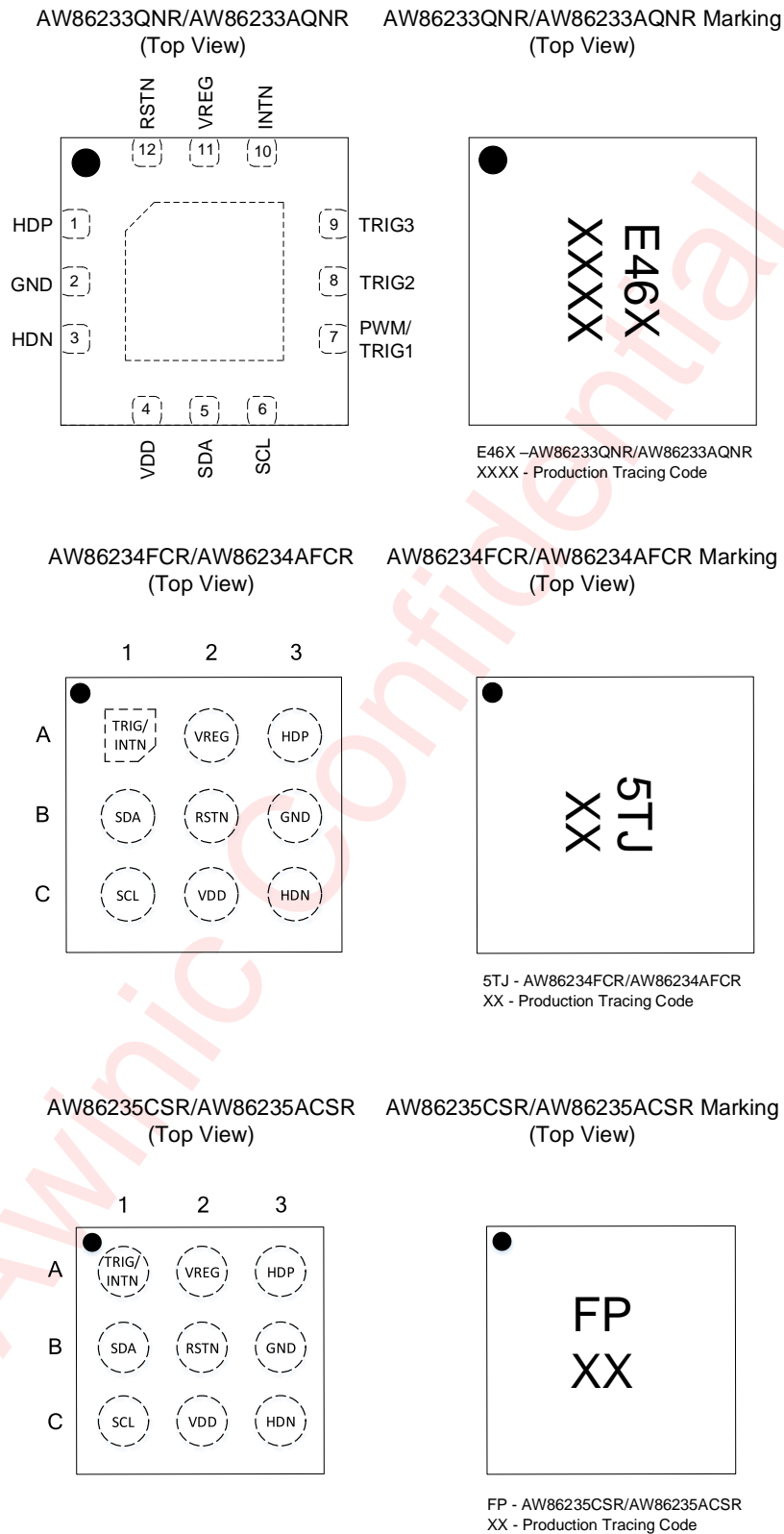


Figure 1 Pin Configuration and Top Mark

## Pin Definition

PIN NUMBER			NAME	TYPE	DESCRIPTION
AW86233	AW86234	AW86235			
/	A1	A1	TRIG/INTN	I/O	Multi-mode pin. Selectable as input trigger (pulse), or output interrupt. Default function is INTN, when set as interrupt output, there must be a pullup resistance to be added.
10	/	/	INTN	O	Output interrupt, there must be a pullup resistance to be added.
5	B1	B1	SDA	I/O	I2C bus data input/output(open drain)
6	C1	C1	SCL	I	I2C bus clock input
11	A2	A2	VREG	Power	Output of LDO
12	B2	B2	RSTN	I	Active low hardware reset High: standby/active mode Low: power-down mode There is no internal pull-down resistor. Recommend to reserve an external 1M pull-down resistor.
4	C2	C2	VDD	Power	Chip power supply
1	A3	A3	HDP	O	Positive haptic driver differential output
2	B3	B3	GND	Ground	Supply ground
3	C3	C3	HDN	O	Negative haptic driver differential output
7	/	/	PWM/TRIG1	I	Multi-mode pin. Selectable as PWM input or TRIG input Default function is PWM. There is a pull-down resistance of 2M inside.
8	/	/	TRIG2	I	Hardware trigger2. There is a pull-down resistance of 2M inside.
9	/	/	TRIG3	I	Hardware trigger3. There is a pull-down resistance of 2M inside.

## Functional Block Diagram

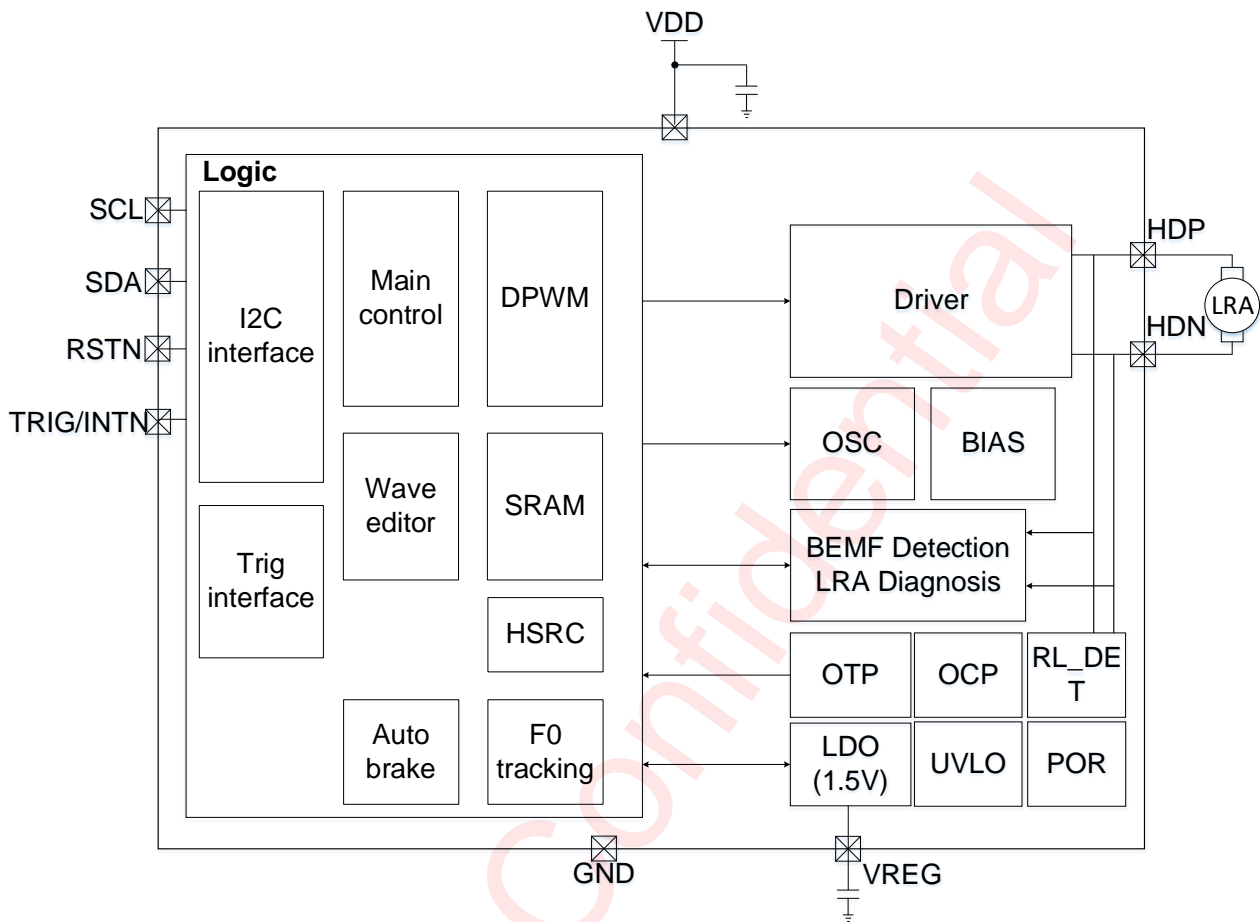
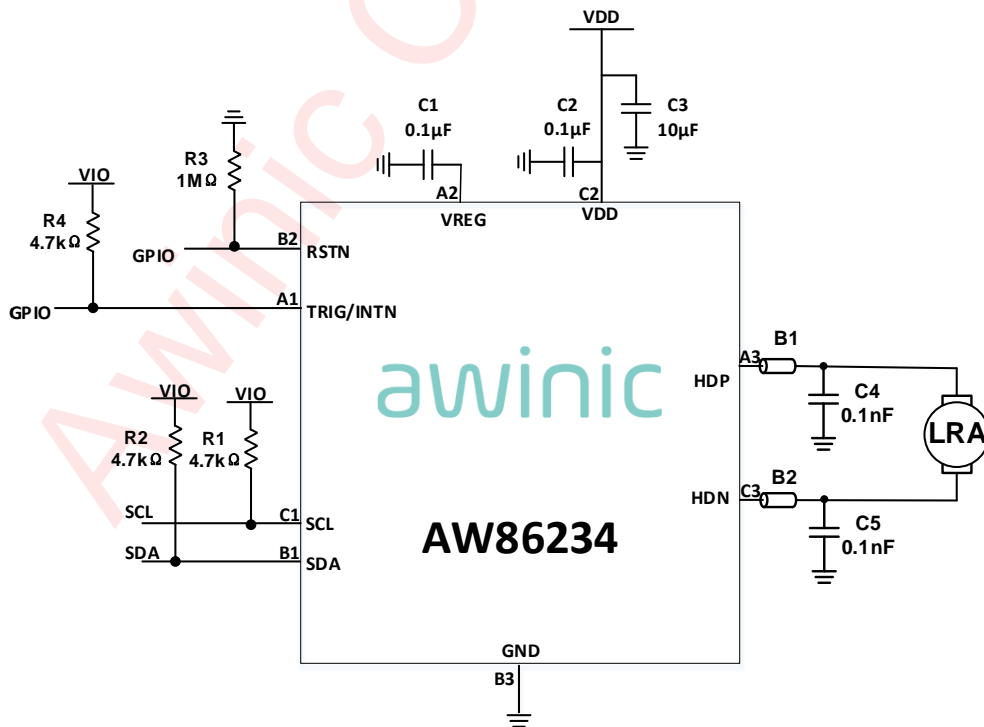
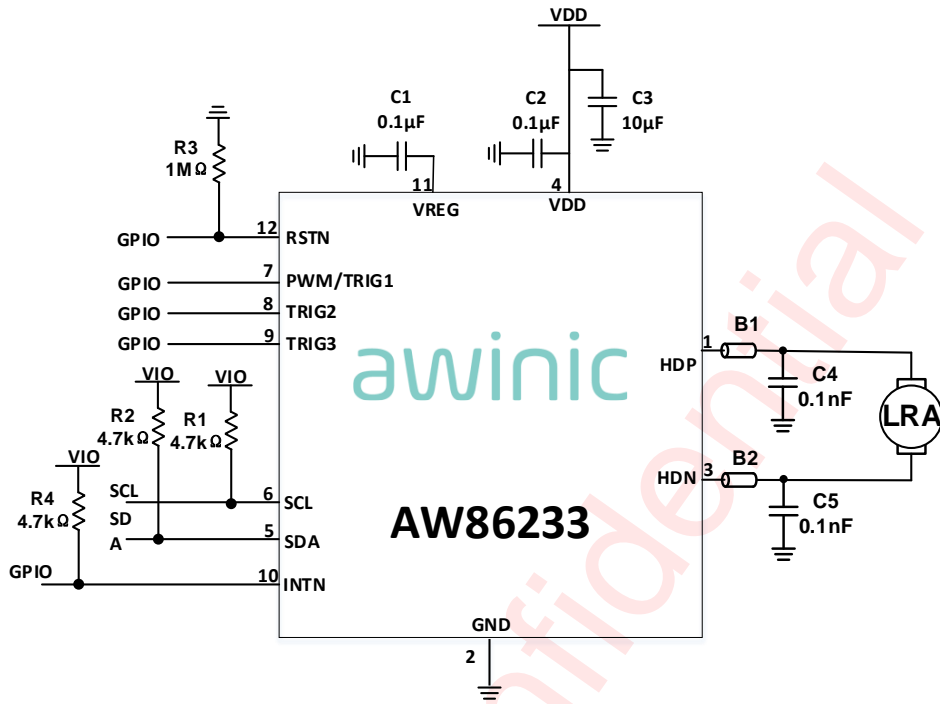


Figure 2 Functional Block Diagram

Typical Application Circuits



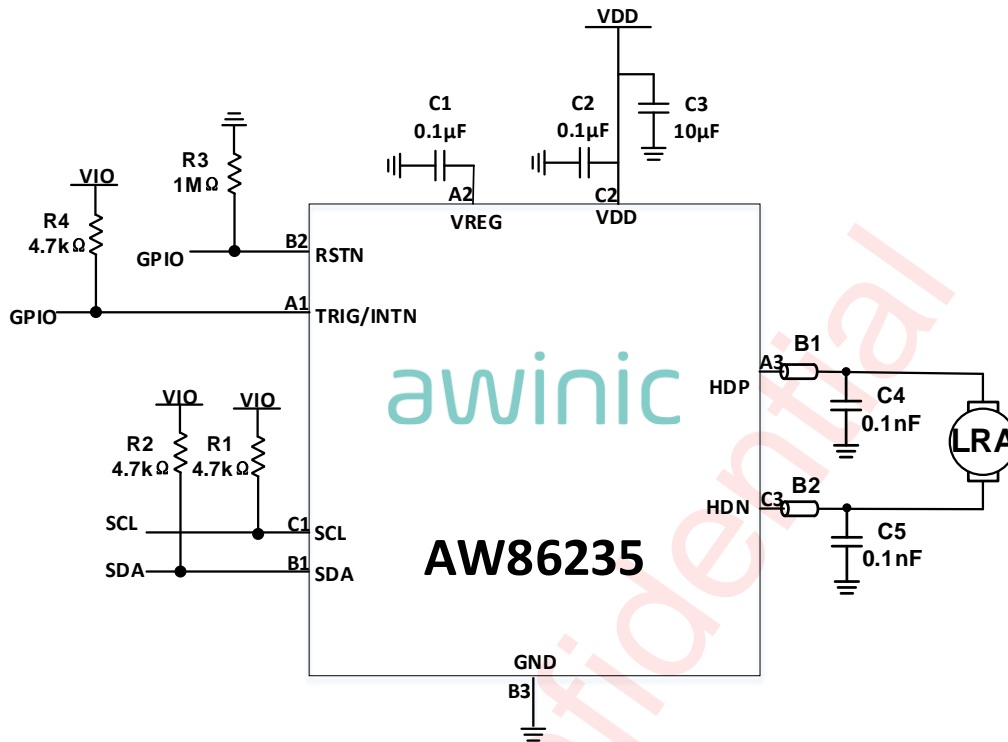


Figure 3 Typical Application Circuit of AW8623X

#### Notice for Typical Application Circuits:

- 1: Please place C1, C2, C3 as close to the chip as possible. The capacitors should be placed in the same layer with the AW8623X chip.
- 2: For the sake of driving capability, the power lines (especially the one to VDD) and output lines should be short and wide as possible.
- 3: In order to prevent EMI problems, it is recommended to reserve bead B1/B2 (default 0Ω) and capacitor C4/C5 (default NC) at the output pin HDP/HDN, the value of C4/C5 can not exceed 100pF.

## Ordering Information

Part Number	Temperature	Package	Marking	Moisture Sensitivity Level	Environment Information	Delivery Form
AW86233QNR	-40°C ~ 85°C	QFN 2mmX2mmX0.5mm-12L	E46X	MSL1	ROHS+HF	4500 units/ Tape and Reel
AW86234FCR	-40°C ~ 85°C	FCQFN 1.37mmX1.37mmX0.4mm-9L	5TJ	MSL1	ROHS+HF	4500 units/ Tape and Reel
AW86235CSR	-40°C ~ 85°C	WLCSP 1.03mmX1.03mmX0.557mm-9B	FP	MSL1	ROHS+HF	4500 units/ Tape and Reel
AW86233AQNR	-40°C ~ 85°C	QFN 2mmX2mmX0.5mm-12L	E46X	MSL1	ROHS+HF	4500 units/ Tape and Reel
AW86234AFCR	-40°C ~ 85°C	FCQFN 1.37mmX1.37mmX0.4mm-9L	5TJ	MSL1	ROHS+HF	4500 units/ Tape and Reel
AW86235ACSR	-40°C ~ 85°C	WLCSP 1.03mmX1.03mmX0.557mm-9B	FP	MSL1	ROHS+HF	4500 units/ Tape and Reel

**Absolute Maximum Ratings**(NOTE 1)

PARAMETERS	RANGE
Supply voltage range VDD	-0.3V to 6.0V
Digital power supply VREG	-0.3V to 1.65V
HDP, HDN( $\leq$ VDD+0.3V)	-0.3V to 6.0V
TRIG/INTN , SDA, SCL, RSTN, PWM/TRIG1, TRIG2, TRIG3	-0.3V to 6.0V
Operating free-air temperature range	-40°C to 85°C
Maximum Junction Temperature T <sub>JMAX</sub>	150°C
Storage Temperature Range T <sub>STG</sub>	-65°C to 150°C
Lead Temperature(Soldering 10 Seconds)	260°C
ESD(Including CDM)(NOTE 2 3)	
HBM(Human Body Model)	$\pm$ 2kV
CDM(Charge Device Model)	$\pm$ 1.5kV
Latch-up	
PARAMETERS	RANGE
Test Condition: JEDEC EIA/JESD78E	+IT: 200mA -IT: -200mA

NOTE 1: Conditions out of those ranges listed in "absolute maximum ratings" may cause permanent damages to the device. In spite of the limits above, functional operation conditions of the device should within the ranges listed in "recommended operating conditions". Exposure to absolute-maximum-rated conditions for prolonged periods may affect device reliability.

NOTE 2: The human body model is a 100pF capacitor discharged through a 1.5k $\Omega$  resistor into each pin. Test method: ANSI/ESDA/JEDEC JS-001-2017.

NOTE 3: Charge Device Model test method: ANSI/ESDA/JEDEC JS-002-2018.

**Recommended Operating Conditions**

Symbol	Parameter	Min.	Typ.	Max.	Unit
VDD	Input voltage	2.7	3.6	5.5	V
C <sub>1</sub>	Input capacitance	0.1	0.1	0.47	$\mu$ F
C <sub>2</sub>	Input capacitance	0.1	0.1	0.47	$\mu$ F
C <sub>3</sub>	Input capacitance	4.7	10	22	$\mu$ F

## Thermal Information

PARAMETERS	AW86233	AW86234	AW86235	UNIT
Junction-to-ambient thermal resistance $\theta_{JA}$	76	125	112	°C/W
Junction-to-board thermal resistance $\theta_{JB}$	15	19	17	°C/W
Junction-to-case thermal resistance $\theta_{JC}$	90	78	55	°C/W
Junction-to-top-center thermal characterization parameter $\Psi_{JT}$	4	3	2	°C/W
Junction-to-board thermal characterization parameter $\Psi_{JB}$	15	19	17	°C/W

Awinic Confidential

## Electrical Characteristics

### Characteristics

Test condition: TA=25°C, VDD=4.2V, RL=8Ω+100μH, f=160Hz (unless otherwise noted)

Symbol	Description	Test Conditions	Min	Typ.	Max	Units
V <sub>VDD</sub>	Battery supply voltage	On pin VDD	2.7		5.5	V
V <sub>VREG</sub>	Voltage at VREG pin		1.35	1.5	1.65	V
V <sub>IL</sub>	Logic input low level	RSTN/TRIG/INTN/SCL/SDA			0.35	V
V <sub>IH</sub>	Logic input high level	RSTN/TRIG/INTN/SCL/SDA	0.8			V
V <sub>OL</sub>	Logic output low level	TRIG/INTN/SDA I <sub>OUT</sub> =20mA			0.4	V
V <sub>OS</sub>	Output offset voltage	I2C signal input 0	-30	0	30	mV
I <sub>SD</sub>	Shutdown current	RSTN =0V		0.05	1	μA
I <sub>STBY</sub>	Standby current	RSTN=1.8V		2		μA
I <sub>Q</sub>	Quiescent current			1		mA
UVP	Under-voltage protection voltage	UVLO_ADJ=00		2.4		V
		UVLO_ADJ=01		2.5		
		UVLO_ADJ=10		2.6		
		UVLO_ADJ=11		2.7		
	Under-voltage protection hysteresis voltage		50	100	150	mV
T <sub>SD</sub>	Over temperature protection threshold			165		°C
T <sub>SDR</sub>	Over temperature protection recovery threshold			135		°C
T <sub>ON1</sub>	Time from shutdown to standby				3	ms
T <sub>ON2</sub>	Waveform startup time	PD_HWM=1,From trigger to output signal	0.2	0.4	0.8	ms
<b>HDRIVER</b>						
R <sub>dson</sub>	Drain-Source on-state resistance	Include NMOS and PMOS(AW86233)	400	630	800	mΩ
R <sub>dson</sub>	Drain-Source on-state resistance	Include NMOS and PMOS(AW86234、AW86235)	300	500	750	mΩ
R <sub>ocp</sub>	Load impedance threshold for over current protection			3		Ω
F <sub>PWM</sub>	PWM output frequency	PD_HWM=0		96		kHz

		PD_HWM=1		48		kHz
$F_{CALL\_ACC\_LRA}$	LRA Consistency Calibration accuracy		F0-2	F0	F0+2	Hz
$V_{peak}$	Output voltage	RL=8Ω+100μH		3.6		V
	Output voltage	RL=16Ω+100μH		3.8		V

### I2C Interface Timing

Parameter			fast mode			fast mode plus			UNIT
No.	Symbol	Name	MIN	TYP	MAX	MIN	TYP	MAX	
1	$f_{SCL}$	SCL Clock frequency			400			1000	kHz
2	$t_{LOW}$	SCL Low level Duration	1.3			0.5			μs
3	$t_{HIGH}$	SCL High level Duration	0.6			0.26			μs
4	$t_{RISE}$	SCL, SDA rise time			0.3			0.12	μs
5	$t_{FALL}$	SCL, SDA fall time			0.3			0.12	μs
6	$t_{SU:STA}$	Setup time SCL to START state	0.6			0.26			μs
7	$t_{HD:STA}$	(Repeat-start) Start condition hold time	0.6			0.26			μs
8	$t_{SU:STO}$	Stop condition setup time	0.6			0.26			μs
9	$t_{BUF}$	the Bus idle time START state to STOP state	1.3			0.5			μs
10	$t_{SU:DAT}$	SDA setup time	0.1			0.1			μs
11	$t_{HD:DAT}$	SDA hold time	10			10			ns

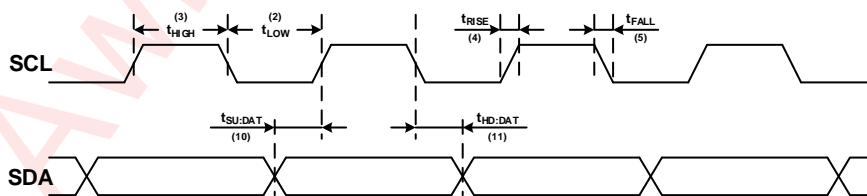


Figure 4 SCL and SDA timing relationships in the data transmission process

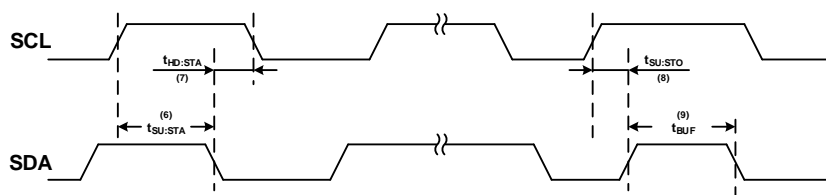


Figure 5 The timing relationship between START and STOP state

## Measurement Setup

AW8623X features switching digital output, as shown in Figure 6. Need to connect a low pass filter to HDP/HDN output respectively to filter out switch modulation frequency, then measure the differential output of filter to obtain analog output signal.

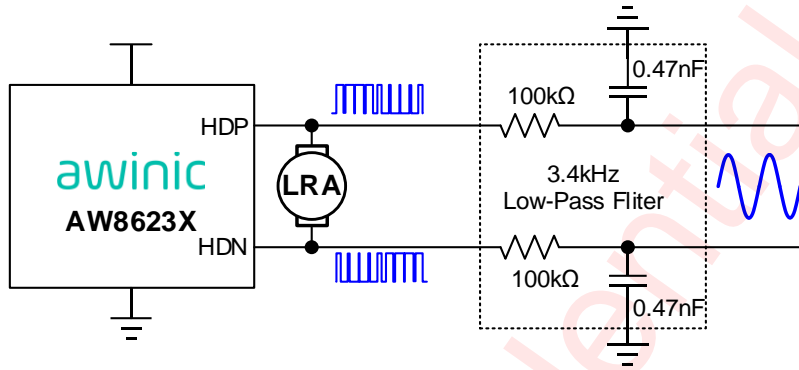


Figure 6 AW8623X test setup

### Typical Characteristic

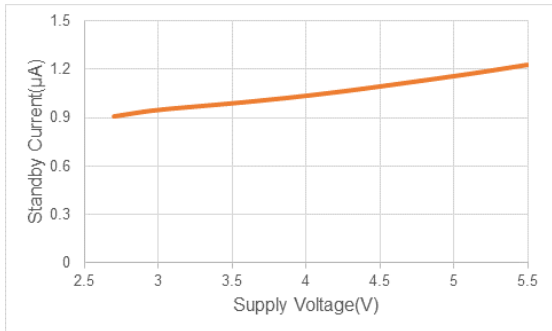


Figure 7 Standby Current Vs Supply Voltage

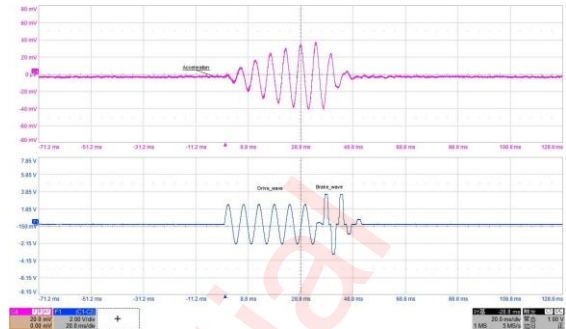


Figure 9 LRA with Automatic Braking

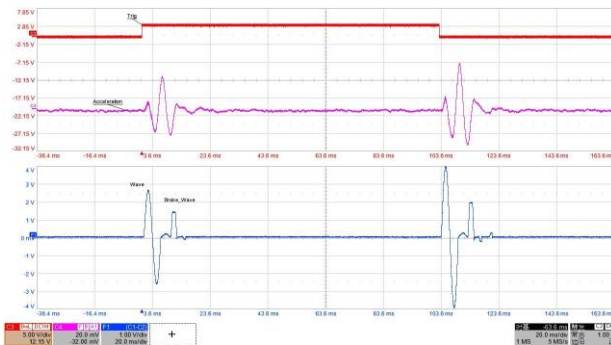


Figure 8 Trig Application

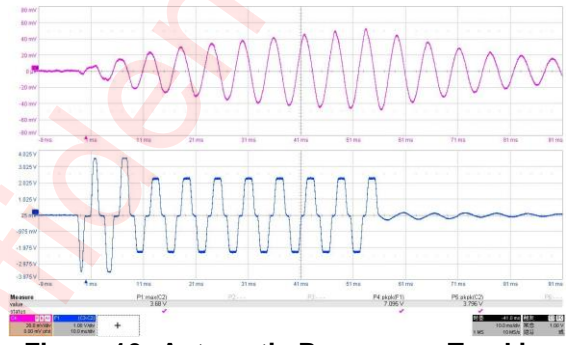


Figure 10 Automatic Resonance Tracking

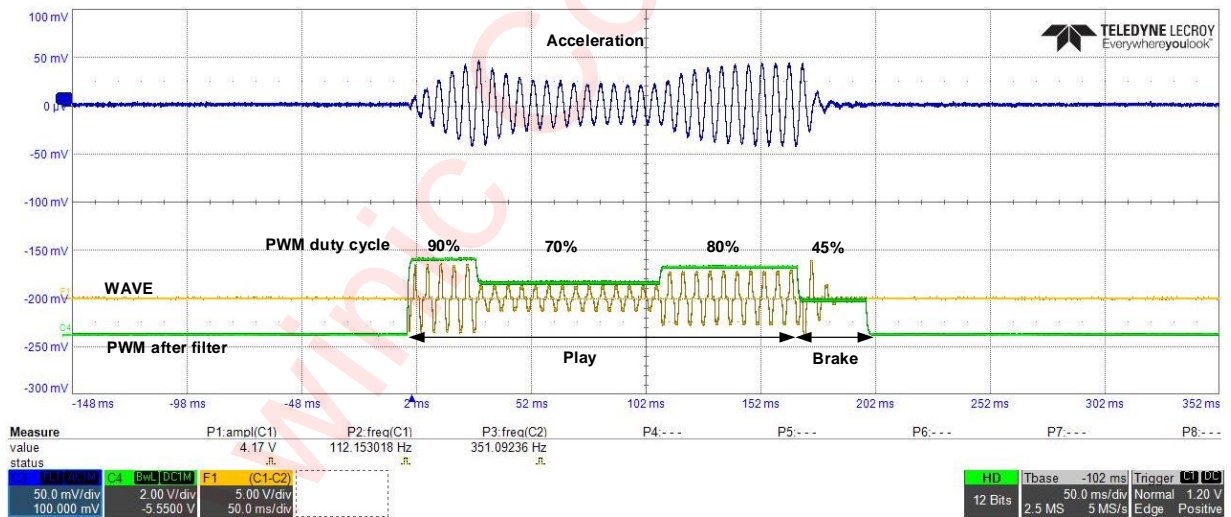


Figure 11 Automatic Resonance Tracking

## Detailed Functional Description

### Power On Reset

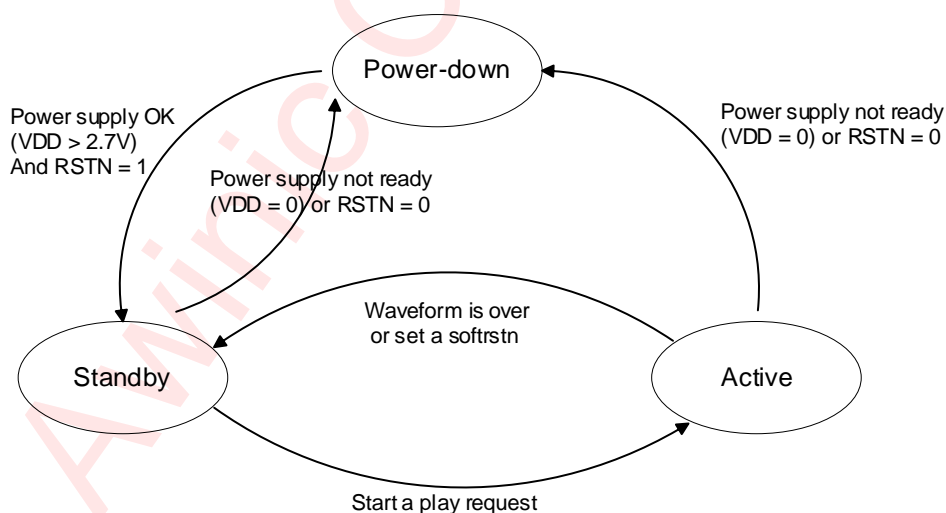
The device provides a power-on reset feature that is controlled by LDO\_OK. The reset signal will be generated to perform a power-on reset operation, which will reset all circuits and configuration registers. When the VDD power on, the VREG voltage raises and produce the LDO\_OK indication, the reset is over.

### Operation Mode

The device supports 3 operation modes.

**Table 1 Operating Mode**

Mode	Condition	Description
Power-Down	VDD = 0V or RSTN = 0V	Power supply is not ready or RSTN is tie to low.  Whole chip shutdown including I2C interface.
Standby	VDD > 2.7V and RSTN = HIGH and no wave is going	Power supply is ready and RSTN is tie to high.  Most parts of the device are power down for low power consumption except I2C interface and LDO.
Active	Playing a waveform	Most parts of the device are working



**Figure 12 Device operating modes transition**

### POWER-DOWN MODE

The device switches to power-down mode when the supply voltage is not ready or RSTN pin is set to low. In this mode, all circuits inside this device will be shut down. I2C interface isn't accessible in this mode, and all of the internal configurable registers and Memory are cleared.

The device will jump out of the power-down mode automatically when the supply voltages are OK and RSTN

pin is set to high.

### Standby Mode

The device switches standby mode when the power supply voltages are OK and RSTN pin set to high. In this mode I2C interface is accessible, other modules except LDO module are still powered down. Customer can force device to this mode by setting STANDBY to high. Also in this mode, customer can initialize waveform library in SRAM. Device will be switched to this mode after haptic waveform playback finished.

### Active Mode

The device is fully operational in this mode. H-bridge driver circuits will start to work. Users can send a playback request to make device in this mode.

### Power On And Power Down Sequence

This device power on sequence is illustrated in the following figure:

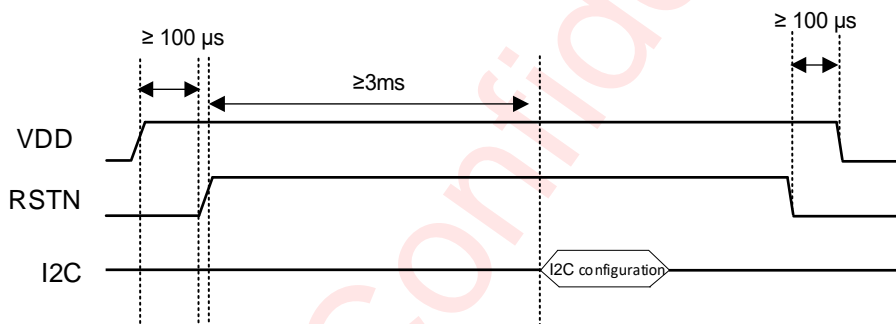


Figure 13 Power On Sequence

### Playback Sequence

Make sure the device is not in POWER-DOWN MODE before sending a playback request, then the playback sequence is illustrated in the following figure:

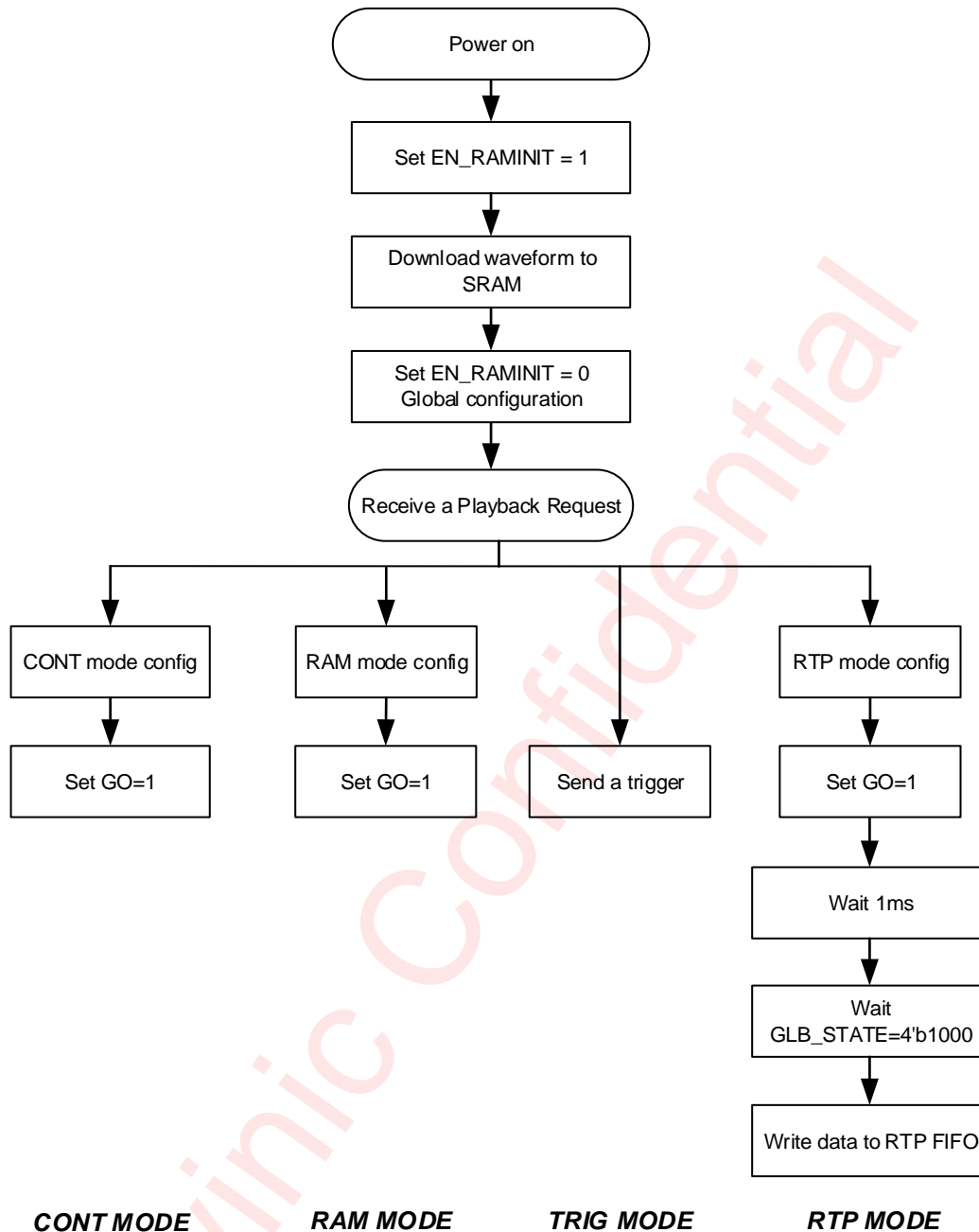


Figure 14 Power up and playback sequence

## Software Reset

Writing 0xAA to register SOFTRST(0x00) via I2C interface will reset the device internal circuits except SRAM, including configuration registers.

## Battery Voltage Detect

Software can send command to detect the battery voltage.

### Detect steps:

- Set EN\_RAMINIT to 1 in register 0x45;

- Set DET\_SEQ0 to 0 in register 0x50;
- Set DET\_GO to 1 in register 0x4F;
- Wait 3ms;
- Set DET\_GO to 0 in register 0x4F;
- Set EN\_RAMINIT to 0 in register 0x45;
- Read AVG\_DATA\_H in register 0x51 and AVG\_DATA\_L in register 0x52.

The code is a 10bit unsigned number.

$$VDD = \frac{6.1 \times (AVG\_DATA\_H \times 256 + AVG\_DATA\_L)}{1023} (V)$$

## Constant Vibration Strength

The device features power-supply feedback. If the supply voltage discharge over time, the vibration strength remains the same as long as enough supply voltage is available to sustain the required output voltage. It is especially useful for ring application. Power-supply feedback only works in all playback mode.

### Use steps:

- Set VBAT\_REF in register 0x4F;
- Set VBAT\_MODE to 1 in register 0x4E;
- Initiates a playback request.

## LRA Consistency Calibration

Different motor batches, assembly conditions and other factors can result in f0 deviation of LRA. When the drive waveform does not match the LRA monomer, the vibration may be inconsistent and the braking effect becomes worse, especially for short vibration waveforms. So it's necessary to perform consistency calibration of LRA. Firstly, the power-on f0 detection can be launched to get the f0 of LRA. Secondly the waveform frequency stored in SRAM and the f0 of LRA are used to calculate the code for calibration. The f0 accuracy after LRA consistency calibration is ±2Hz.

## LRA Resistance Detect

Software can send command to detect the LRA's resistance.

### Detect steps:

- Set EN\_RAMINIT to 1 in register 0x45;
- Read D2S\_GAIN register and save the result as d2s\_gain\_pre;
- Set DET\_SEQ0 to 3 and set D2S\_GAIN with an appropriate with in register 0x50;
- Set DET\_GO to 1 in register 0x4F;
- Wait 3ms;
- Set DET\_GO to 0 in register 0x4F;
- Set EN\_RAMINIT to 0 in register 0x45;
- Restore the value of D2S\_GAIN register to d2s\_gain\_pre;

- Read AVG\_DATA\_H in register 0x51 and AVG\_DATA\_L in register 0x52.

Based on this information host can diagnosis used LRA's status. The code is a 10bit unsigned number.

$$RL = \frac{610 \times (AVG\_DATA\_H \times 256 + AVG\_DATA\_L)}{1023 \times D2S\_GAIN} (\Omega)$$

The values of the D2S\_GAIN that can be configured for different sizes of RL are listed below. The higher the RL, the smaller the configurable D2S\_GAIN.

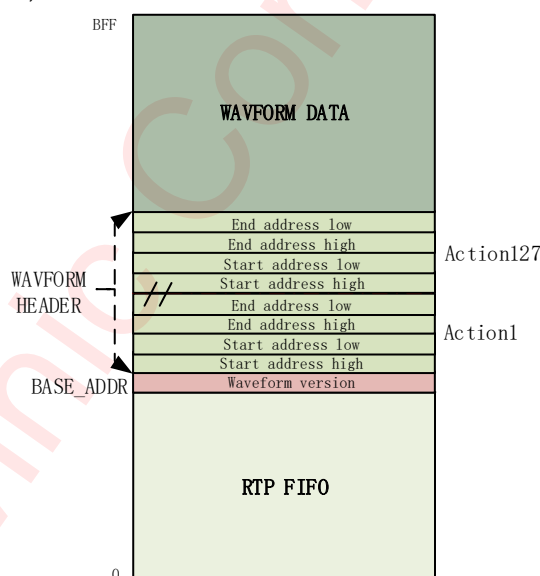
**Table 2 D2S\_GAIN Selection**

RL(Ω)	D2S_GAIN
2~25	20
20~55	10

## Flexible Haptic Data Playback

The device offers multiple ways to playback haptic effects data. The PLAY\_MODE bits select RAM mode, RTP mode, CONT mode. Additional flexibility is provided by the one hardware TRIG pins, which can override PLAY\_MODE bit to playback haptic effects data as configuration.

The device contains 3 kB of integrated SRAM to store customer haptic waveforms' data. The whole SRAM is separated to RAM waveform library and RTP FIFO region by base address. And RAM waveform library is including waveform library version, waveform header and waveform data.



**Figure 15 Data structure in SRAM**

SRAM mode and TRIG mode playback the waveforms in RAM waveform library and RTP mode playback the waveform data written in RTP FIFO, CONT mode playback non-filtered or filtered square wave with rated drive voltage.

### Sram Structure

A RAM waveform library consists of a waveform version byte, a waveform header section, and the waveform data content. The waveform header defines the data boundaries for each waveform ID in the data field, and the waveform data contains a signed data format (2's complement) to specify the magnitude of the drive.

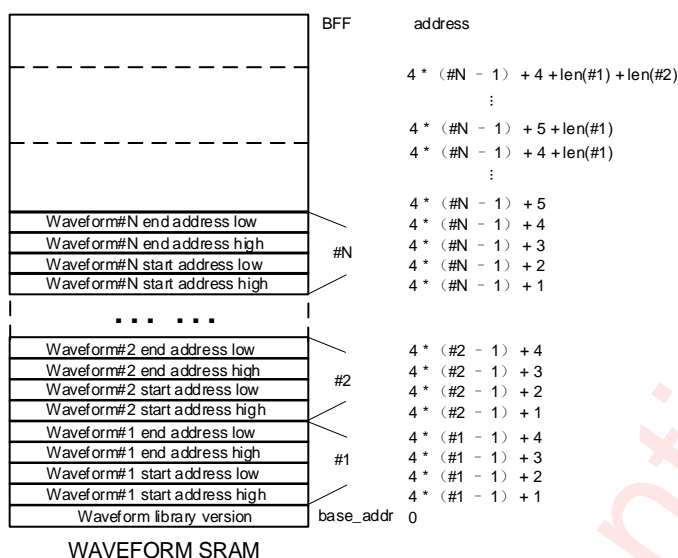


Figure 16 Waveform library data structure

#### Waveform version:

One byte located on SRAM base address, setting to different value to identify different version of RAM waveform library.

#### Waveform header:

The waveform header block consist of N-boundary definition blocks of 4 bytes each. N is the number of waveforms stored in the SRAM (N cannot exceed 127). Each of the boundary definition blocks contain the start address (2 bytes) and end address (2 bytes). So the total length of waveform header block are  $N * 4$  bytes.

The start address contains the location in the memory where the waveform data associated with this waveform begins.

The end address contains the location in the memory where the waveform data associated with this waveform ends.

The waveform ID is determined after base address is defined. Four bytes begins with the address next to base address are the first waveform ID's header, and next four bytes are the second waveform ID's header, and so on.

#### Waveform data:

The waveform data contains a signed data format (2's complement) to specify the magnitude of the drive. The begin address and end address is specified in waveform ID's header.

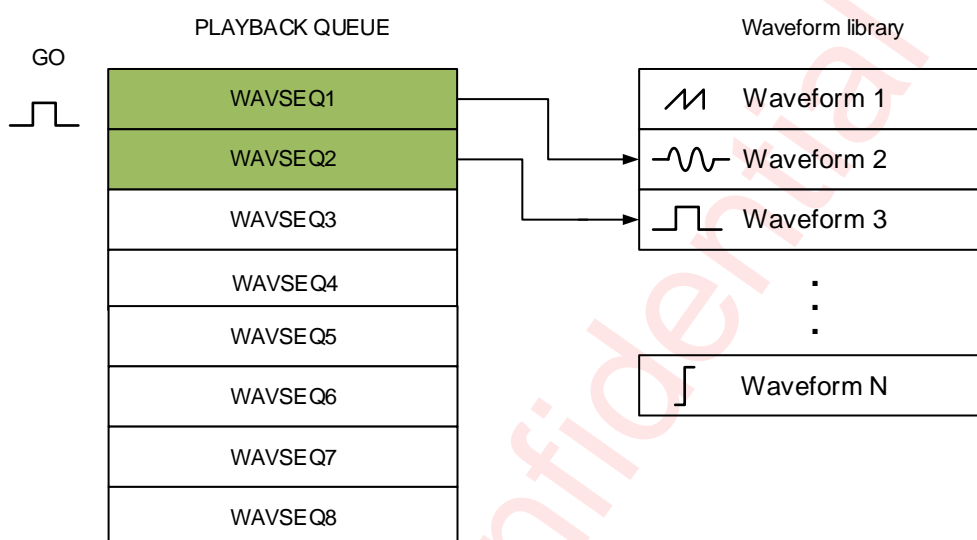
#### Waveform library initialization steps:

- Before waveform library initialization, make sure the chip is in STANDBY mode;
- Prepare waveform library data including: waveform library version, waveform header fields for waveform in library and waveform data of each waveform;
- Set register EN\_RAMINIT=1 in register 0x45, to enable SRAM initial;
- Delay 1ms;
- Set base address (register 0x2C 0x2D);
- Set ram address(register 0x40, 0x41);

- Write waveform library data into register 0x42 continually until all the waveform library data written;
- Set register EN\_RAMINIT=0 in register 0x45, to disable SRAM initial.

### Ram Mode

To playback haptic data with RAM mode, the waveform ID must first be configured into the waveform playback queue and then the waveform can be played by writing GO bit register.



**Figure 17 RAM mode playback**

The waveform playback queue defines waveform IDs in waveform library for playback. Eight WAVSEQx registers queue up to eight library waveforms for sequential playback. A waveform ID is an integer value referring to the index of a waveform in the waveform library. Playback begins at WAVSEQ1 when the user triggers the waveform playback queue. When playback of that waveform ends, the waveform queue plays the next waveform ID held in WAVSEQ2 (if non-zero). The waveform queue continues in this way until the queue reaches an ID value of zero or until all eight IDs are played whichever comes first.

The waveform ID is a 7-bit number. The MSB of each ID register can be used to implement a delay between queue waveforms. When the MSB is high, bits 6-0 indicate the length of the wait time. The wait time for that step then becomes  $\text{WAVSEQ}[6:0] \times \text{wait\_time unit}$ . Wait\_time unit can be configuration of WAITSLOT register.

The device allows for looping of individual waveforms by using the SEQxLOOP registers. When used, the state machine will loop the particular waveform the number of times specified in the associated SEQxLOOP register before moving to the next waveform. The device allows for looping of the entire playback sequence by using the MAIN\_LOOP register. The waveform-looping feature is useful for long, custom haptic playbacks, such as a haptic ringtone.

### Playback steps:

- Waveform library must be initialized before playback;
- Set PLAY\_MODE bit to 0 in register 0x08;
- Set playback queue registers (0x0A ~ 0x11) as desired;
- Set playback loop registers (0x12~ 0x16) as desired;
- Set GO bit to 1 in register 0x09 to trigger waveform playback;
- Device will be switched to STANDBY mode after haptic waveform playback finished.

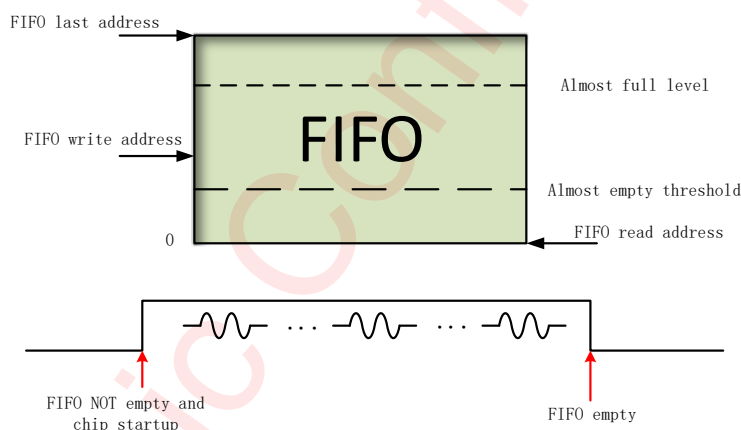
### Rtp Mode

The real-time playback mode is a simple, single 8-bit register interface that holds an amplitude value. When real-time playback is enabled, begin to enters a register value to RTP\_DATA over the I2C will trigger the playback, the value is played until the data sending finished or removes the device from RTP mode. During writing data to the RTP\_DATA register, the I2C speed cannot be too low, see the table below for details.

**Table 3 Minimum I2C speed**

WAVDAT_MODE(0x46)	Sample rate of waveform	I2C speed
2'b10/2'b11	12K	$\geq 250\text{kHz}$
2'b00	24K	$\geq 400\text{kHz}$
2'b01	48K	1MHz

After FF\_AEM or FF\_AFM register is configured as 0, HOST can obtain the RTP FIFO almost empty or almost full status through interrupt signal(pin INTN) or read FF\_AES or FF\_AFS register. RTP FIFO almost empty and almost full threshold can be configured through FIFO\_AE and FIFO\_AF registers.

**Figure 18 RTP mode playback****Playback steps:**

- Prepare RTP data before playback;
- Set PLAY\_MODE bit to 1 in register 0x08;
- Set GO bit to 1 in register 0x09 to trigger waveform playback;
- Delay 1ms;
- Check GLB\_STATE=4'b1000, if HOST don't send data to FIFO, chip will wait for RTP data coming in this state forever;
- Write RTP data continually to register 0x32 to playback RTP waveform;
- HOST need monitor the full and empty status for RTP FIFO;
- Device will be switched to STANDBY mode after wave data in RTP FIFO is played empty.

### Auto Dynamic Sine Mode

Auto dynamic sine mode can generate full amplitude half period sine wave through 5 bytes and 10 bytes for a whole period. For the whole period sine wave, the first 5 bytes is same as the last five bytes. The 5 bytes are `sinh`, `sinl`, `cosh`, `cosl`, `rtp_gain`. Compared with `rtp` mode, Auto dynamic sine mode consumes less I2C resource to generate the same sine wave. The calculation formula of relevant parameters is as follow. The `wav_frequency` range from 60Hz to 300Hz. The sampling rate can be set to 48k or 96k by register 0x31. All the result need round down.

$$\text{Sinh} = 65536 * \sin(2 * \pi * \text{wav\_frequency} / \text{sampling rate}) / 256$$

$$\text{sinl} = 65536 * \sin(2 * \pi * \text{wav\_frequency} / \text{sampling rate}) \% 256$$

$$\text{cosh} = 65536 * \cos(2 * \pi * \text{wav\_frequency} / \text{sampling rate}) / 256$$

$$\text{cosl} = 65536 * \cos(2 * \pi * \text{wav\_frequency} / \text{sampling rate}) \% 256$$

`rtp_gain` represent gain of the sine wave, it is better to set the `rtp_gain` < 0x80, otherwise the waveform will be clipped.

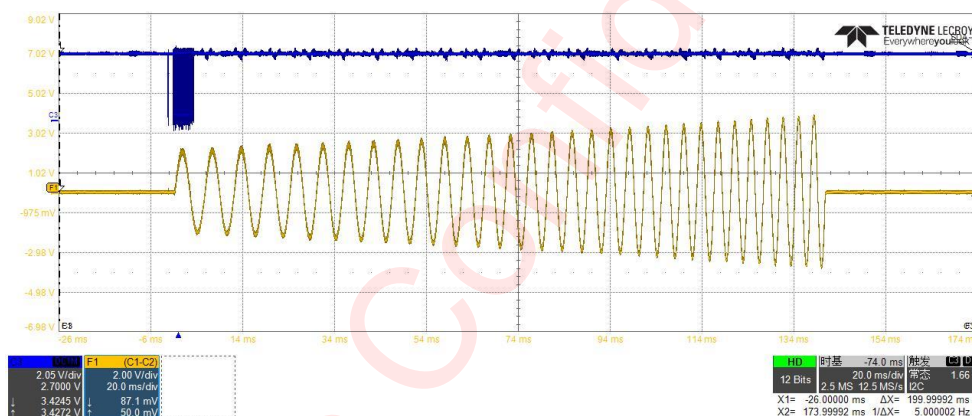


Figure 19 Auto dynamic sine mode playback

#### Playback steps:

- Set `AUTO_DYNAMIC_SIN` bit to 1 to enable auto dynamic sine mode;
- Prepare auto dynamic sine data before playback;
- The other steps is same with `rtp` mode.

#### Trig Mode

The AW86234/AW86235 has a configuration, multi-mode pin `TRIG/INTN`. It can serve as a dedicated hardware pin for quickly trigger haptic data playback through configuration register `INTN_PIN`. Quickly trigger can be configured positive edge/negative edge/both-edge/level trigger.

The AW86233 has three hardware pins for quickly trigger haptic data playback. Each pin can be configured positive edge/negative edge/both-edge/level trigger.

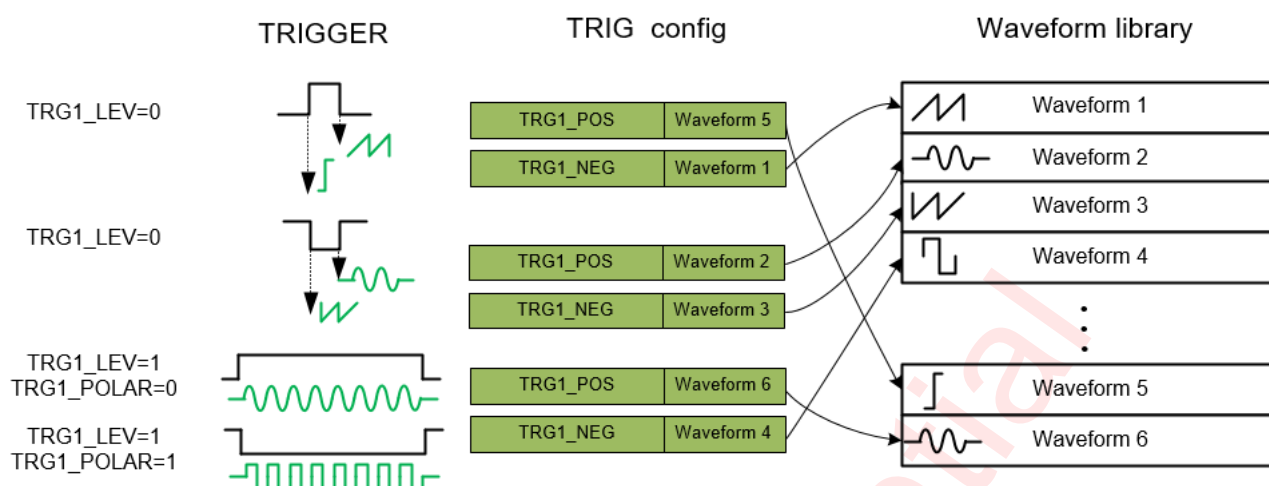


Figure 20 TRIG mode playback

Edge mode or level mode is accessible through configuration register TRG1\_LEV. When an edge mode is needed, user should set TRG1\_LEV =0. In edge mode, register TRG1SEQ\_P and TRG1\_POS respectively represent the waveform and enable signal of positive edge, where register TRG1SEQ\_N and TRG1\_NEG respectively represent the waveform and enable signal of negative edge.

When a level mode is needed, user should set TRG1\_LEV =1, and positive level and negative level can be supported by setting register TRG1\_POLAR=0 and setting TRG1\_POLAR=1.

Table 4 TRIG MODE CONFIG

I2C reg				Trigger	Waveform
TRGx_LVL	TRGx_POLAR	TRGx_POS	TRGx_NEG		
0	X	0	0	-	none
	X	1	0	↑	TRG1SEQ_P
	X	0	1	↓	TRG1SEQ_N
	X	1	1	↑/↓	TRG1SEQ_P / TRG1SEQ_N
1	0	X	X	High level	TRG1SEQ_P
	1	X	X	Low level	TRG1SEQ_N

#### Playback steps for The AW86234/AW86235:

- Waveform library must be initialized before playback;
- Set INTN\_PIN bit to 0 in register 0x45;
- Set TRG1\_MODE bits to 3 in register 0x45;
- Set trigger playback registers (0x33, 0x36, 0x39, 0x3A, 0x3E, 0x43, 0x45) as desired;
- Send trigger pulse ( $\geq 1\mu\text{s}$ ) or trigger level ( $\geq 0.8\text{ms}$ ) on TRIG pins to playback waveform;
- Device will be switched to STANDBY mode after haptic waveform playback finished.

#### Playback steps for The AW86233:

- Waveform library must be initialized before playback;
- Set INTN\_PIN bit to 1 in register 0x45;
- Set TRG1\_MODE bits to 3 in register 0x45;
- Set trigger playback registers (0x33~0x3A, 0x3E, 0x43, 0x45) as desired;

- Send trigger pulse( $\geq 1\mu\text{s}$ ) or trigger level( $\geq 0.8\text{ms}$ ) on TRIG pins to playback waveform;
- Device will be switched to STANDBY mode after haptic waveform playback finished.

### Cont Mode

The CONT mode mainly performs two functions: F0 detection and real-time resonance-frequency tracking. F0 detection can be launched by setting EN\_F0\_DET=1. When set TRACK\_EN=1, real-time resonance-frequency tracking will be launched by tracking the BEMF of actuator constantly. It provides stronger and more consistent vibrations and lower power consumption. If the resonant frequency shifts for any reason, the function tracks the frequency from cycle to cycle. When TRACK\_EN is set to 0, the width of waveform of cont mode is determined by DRV\_WIDTH in register 0x19.

When the EDGE\_FRE register is set to 4'b1xxx, the CONT mode outputs a filtered square wave. The edge of filtered square wave is composed of SIN or COS wave whose frequency can be configured by EDGE\_FRE register. When SIN\_MODE register is set to 1, filtered square wave is composed of COS wave.

### Playback steps:

- Set PLAY\_MODE = 2 in register 0x08 to enable CONT mode;
- (optional)Set EN\_F0\_DET = 1 and BRK\_EN =1 to enable F0 detection;
- Set cont mode by configuring registers(0x17~0x1F and 0x21);
- Set GO bit to 1 in register 0x09 to trigger waveform playback;
- Delay 1ms;
- If enable F0 detection, get F0 information from registers(0x24~0x27) after GLB\_STATE=0;
- Device will be switched to STANDBY mode after haptic waveform playback finished.

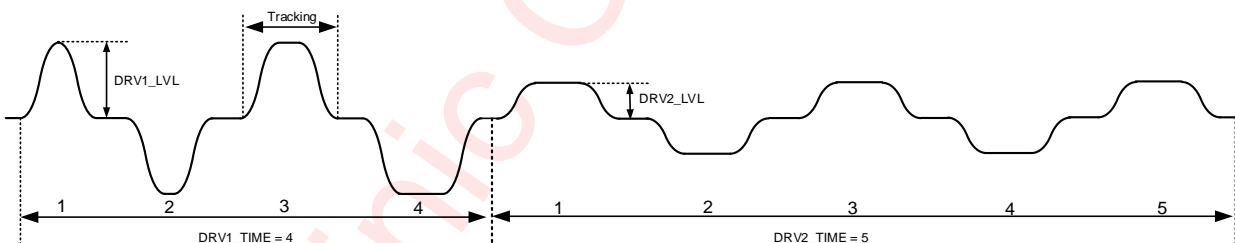


Figure 21 Cont mode playback

### Auto Brake Engine

An auto-brake engine is integrated into this device. Users can adjust the brake strength by setting D2S\_GAIN in register 0x50. The greater D2S\_GAIN, the greater brake strength and the worse loop stability. Auto-brake engine is disabled when setting BRK\_EN=0 or BRK\_TIME=0.

### To enable Auto-brake engine, there are some points to note:

- TRGx\_BRK in register 0x39~0x3A should be set to 1 when in TRIG mode.
- Auto-brake engine will not work when EN\_F0\_DET in register 0x17 is set to 1.
- Auto-brake engine will not work when BRK\_TIME in register 0x20 is set to 0.
- Device will be switched to STANDBY mode after haptic waveform playback finished.

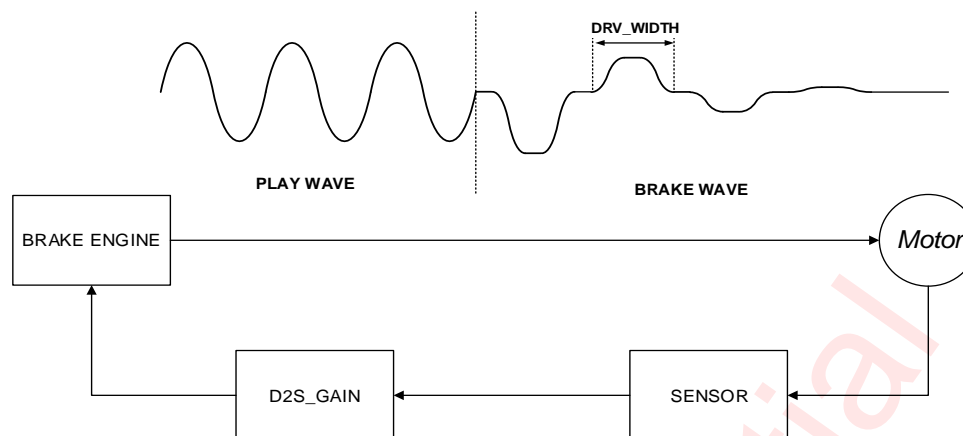


Figure 22 Brake loop

**PWM Mode (Unique mode for The AW86233)**

The AW86233 has a configuration, multi-mode pin PWM/TRG1. It can serve as a dedicated hardware pin for PWM mode. User can configure LRA mode or ERM mode by configuring TRG1\_MODE in 0x45. The minimum interval between two PWM playback times is 10ms.

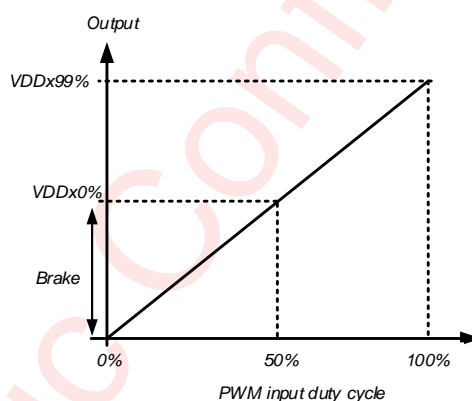


Figure 23 PWM mode(LRA) playback

**Playback steps:**

- Set TRG1\_MODE=3'b000 or 3'b001 in register 0x45;
- Send a PWM signal(24kHz~250kHz) to pin PWM/TRIG;
- **When the driver is playing PWM MODE, master should not configure I2C;**

After the pin PWM/TRIG1 changes to level 0, the chip will go to STANDBY within a half period of motor F0.

**Protection Mechanisms****Over Temperature Protection (OTP)**

The device has automatic temperature protection mechanism which prevents heat damage to the chip. It is triggered when the junction temperature is larger than the preset temperature high threshold (default = 165°C).

When it happens, the output stages will be disabled. When the junction temperature drops below the preset temperature low threshold (less than 135°C), the output stages will start to operate normally again.

### **Over Current (Short) Protection (OCP)**

The short circuit protection function is triggered when HDP/HDN is short too VDD/GND or HDP is short to HDN, the output stages will be shut down to prevent damage to itself. When the fault condition is disappeared, the output stages of device will restart.

### **VDD Under Voltage Lock Out Protection (UVLO)**

The device has a battery monitor that monitors the VDD level to ensure that is above threshold 2.7V, In the event of a VDD drop, the device immediately power down the H-bridge driver and latches the UVLO flag.

### **Drive Data Error Protection (DDEP)**

When haptic data sent to drive LRA is error such as: a DC data or almost DC data, it will cause the LRA heat to brake. The device configurable immediately power down the H-bridge driver and latched the DDEP flag.

## **I2C Interface**

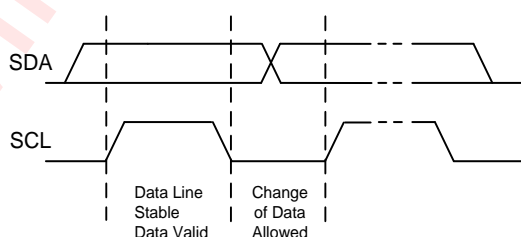
This device supports the I2C serial bus and data transmission protocol in fast mode at 400kHz and fast mode plus at 1000kHz. This device operates as a slave on the I2C bus. Connections to the bus are made via the open-drain I/O pin SDA and I pin SCL. The pull-up resistor can be selected in the range of 1k~10kΩ and the typical value is 4.7kΩ. This device can support different high level (1.2V~3.3V) of this I2C interface.

### **Device Address**

The I2C device address (7-bit) is 0x5A and cannot be set.

### **Data Validation**

When SCL is high level, SDA level must be constant. SDA can be changed only when SCL is low level.



**Figure 24 Data Validation Diagram**

### **General I2C Operation**

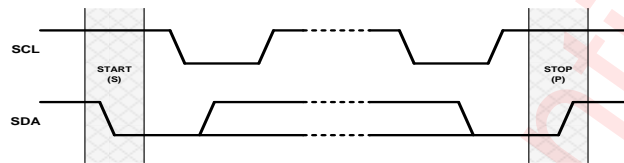
The I2C bus employs two signals, SDA (data) and SCL (clock), to communicate between integrated circuits in a system. The device is addressed by a unique 7-bit address; the same device can send and receive data. In addition, Communications equipment has distinguished master from slave device: In the communication process, only the master device can initiate a transfer and terminate data and generate a corresponding clock

signal. The devices using the address access during transmission can be seen as a slave device. SDA and SCL connect to the power supply through the current source or pull-up resistor. SDA and SCL default is a high level. There is no limit on the number of bytes that can be transmitted between start and stop conditions. When the last word transfers, the master generates a stop condition to release the bus.

START state: The SCL maintain a high level, SDA from high to low level

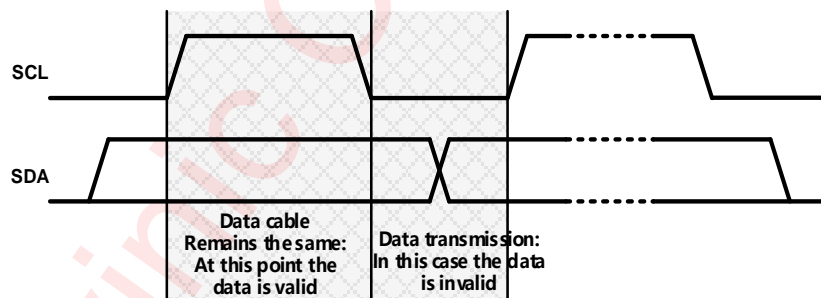
STOP state: The SCL maintain a high level, SDA pulled low to high level

Start and Stop states can be only generated by the master device. In addition, if the device does not produce STOP state after the data transmission is completed, instead re-generate a START state (Repeated START, Sr), and it is believed that this bus is still in the process of data transmission. Functionally, Sr state and START state is the same. As shown in Figure 25.



**Figure 25 START and STOP state generation process**

In the data transmission process, when the clock line SCL maintains a high level, the data line SDA must remain the same. Only when the SCL maintain a low level, the data line SDA can be changed, as shown in Figure 26. Each transmission of information on the SDA is 9 bits as a unit. The first eight bits are the data to be transmitted, and the first one is the most significant bit (Most Significant Bit, MSB), the ninth bit is an acknowledgment bit (Acknowledge, ACK or A), as shown in Figure 27. When the SDA transmits a low level in ninth clock pulse, it means the acknowledgment bit is 1, namely the current transmission of 8 bits' data is confirmed, otherwise it means that the data transmission has not been confirmed. Any amount of data can be transferred between START and STOP state.



**Figure 26 The data transfer rules on the I2C bus**

The whole process of actual data transmission is shown in Figure 27. When generating a START condition, the master device sends an 8-bit data, including a 7-bit slave addresses (Slave Address), and followed by a "read / write" flag ( $\overline{R/W}$ ). The flag is used to specify the direction of transmission of subsequent data. The master device will produce the STOP state to end the process after the data transmission is completed. However, if the master device intends to continue data transmission, you can directly send a Repeated START state, without the need to use the STOP state to end transmission.

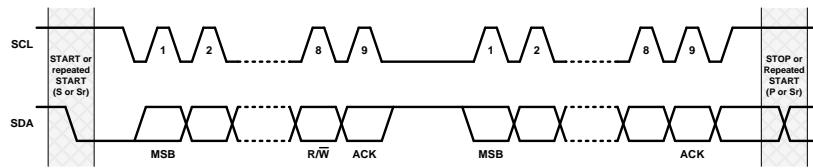


Figure 27 Data transmission on the I2C bus

### Write Process

Writing process refers to the master device write data into the slave device. In this process, the transfer direction of the data is always unchanged from the master device to the slave device. All acknowledge bits are transferred by the slave device, in particular, the device as the slave device, the transmission process in accordance with the following steps, as shown in Figure 28:

Master device generates START state. The START state is produced by pulling the data line SDA to a low level when the clock SCL signal is a high level.

Master device transmits the 7-bits device address of the slave device, followed by the "read / write" flag (flag  $R/\bar{W} = 0$ );

The slave device asserts an acknowledgment bit (ACK) to confirm whether the device address is correct;

The master device transmits the 8-bit register address to which the first data byte will written;

The slave device asserts an acknowledgment (ACK) bit to confirm the register address is correct;

Master sends 8 bits of data to register which needs to be written;

The slave device asserts an acknowledgment bit (ACK) to confirm whether the data is sent successfully;

If the master device needs to continue transmitting data by sending another pair of data bytes, just need to repeat the sequence from step 6. In the latter case, the targeted register address will have been auto-incremented by the device.

The master device generates the STOP state to end the data transmission.

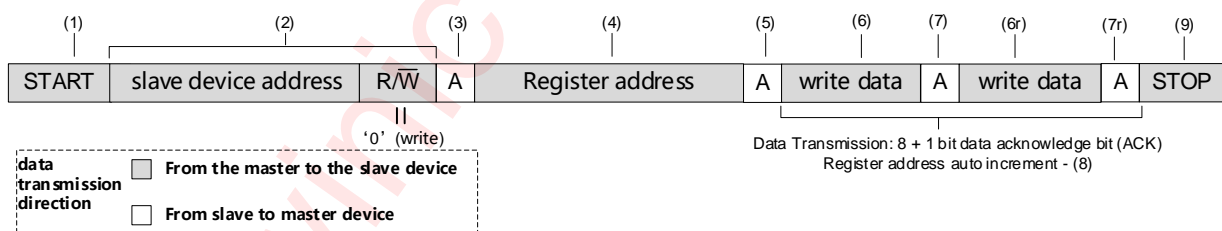


Figure 28 Writing process (data transmission direction remains the same)

### Read Process

Reading process refers to the slave device reading data back to the master device. In this process, the direction of data transmission will change. Before and after the change, the master device sends START state and slave address twice, and sends the opposite "read/write" flag. In particular, AW8623X as the slave device, the transmission process carried out by following steps listed in Figure 29:

Master device asserts a start condition;

Master device transmits the 7 bits address of the device, and followed by a "read / write" flag ( $R/\bar{W} = 1$ );

The slave device asserts an acknowledgment bit (ACK) to confirm whether the device address is correct;

The master device transmits the register address to make sure where the first data byte will read;

The slave device asserts an acknowledgment (ACK) bit to confirm whether the register address is correct or not;

The master device restarts the data transfer process by continuously generating STOP state and START state or a separate Repeated START;

Master sends 7-bits address of the slave device and followed by a read / write flag (flag  $R/\bar{W} = 1$ ) again;

The slave device asserts an acknowledgment (ACK) bit to confirm whether the register address is correct or not;

Master transmits 8 bits of data to register which needs to be read;

The slave device sends an acknowledgment bit (ACK) to confirm whether the data is sent successfully;

The device automatically increments register address once after sent each acknowledge bit (ACK),

The master device generates the STOP state to end the data transmission.

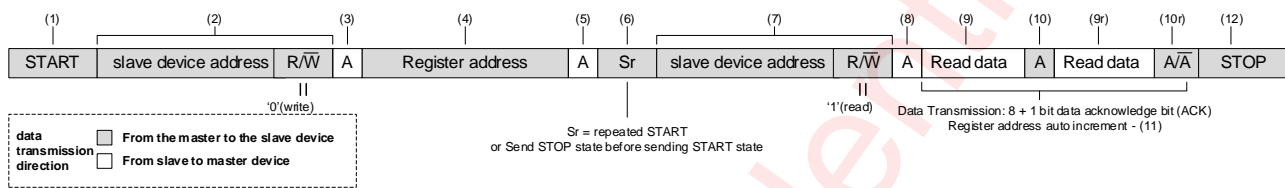


Figure 29 Reading process (data transmission direction remains the same)

## CHIP ID

CHIPID(16-bits) consists of CHIPID\_H(0x57) and CHIPID\_L(0x69). The features of CHIPID are shown in the following table.

**Table 5 CHIPID feature**

CHIPID (0x57,0x69)	Product
0x2330	AW86233QNR/ AW86233AQNR
0x2340	AW86234FCR/ AW86234AFCR
0x2350	AW86235CSR/ AW86235ACSR

## Register Configuration

### Register List

ADDR	NAME	R/W	Bit7	Bit6	Bit5	Bit4	Bit3	Bit2	Bit1	Bit0	Default
0x00	RSTCFG	WO	SOFTTRST								0x00
0x01	SYSST	RO			UVLS	FF_AES	FF_AFS	OCD5	OTS	DONES	0x10
0x02	SYSINT	RC			UVLI	FF_AEI	FF_AFI	OCDI	OTI	DONEI	0x10
0x03	SYSINTM	RW			UVLM	FF_AEM	FF_AFM	OCDM	OTM	DONEM	0x3F
0x04	SYSST2	RO					LDO_OK				0x09
0x07	PLAYCFG2	RW	GAIN								0x80
0x08	PLAYCFG3	RW					STOP_MODE	BRK_EN	PLAY_MODE		0x04
0x09	PLAYCFG4	WC							STOP	GO	0x00
0x0A	WAVCFG1	RW	SEQ1WAIT				WAVSEQ1				0x01
0x0B	WAVCFG2	RW	SEQ2WAIT				WAVSEQ2				0x00
0x0C	WAVCFG3	RW	SEQ3WAIT				WAVSEQ3				0x00
0x0D	WAVCFG4	RW	SEQ4WAIT				WAVSEQ4				0x00
0x0E	WAVCFG5	RW	SEQ5WAIT				WAVSEQ5				0x00
0x0F	WAVCFG6	RW	SEQ6WAIT				WAVSEQ6				0x00
0x10	WAVCFG7	RW	SEQ7WAIT				WAVSEQ7				0x00
0x11	WAVCFG8	RW	SEQ8WAIT				WAVSEQ8				0x00
0x12	WAVCFG9	RW	SEQ1LOOP				SEQ2LOOP				0x00
0x13	WAVCFG10	RW	SEQ3LOOP				SEQ4LOOP				0x00
0x14	WAVCFG11	RW	SEQ5LOOP				SEQ6LOOP				0x00
0x15	WAVCFG12	RW	SEQ7LOOP				SEQ8LOOP				0x00
0x16	WAVCFG13	RW	WAITSLOT				MAINLOOP				0x00
0x17	CONTCFG1	RW			EN_F0_DET	SIN_MODE	EDGE_FRE				0x1E
0x18	CONTCFG2	RW	F_PRE								0x8D
0x19	CONTCFG3	RW	DRV_WIDTH								0x6A
0x1B	CONTCFG5	RW					BRK_GAIN				0x08
0x1C	CONTCFG6	RW	TRACK_EN	DRV1_LVL							0xFF
0x1D	CONTCFG7	RW		DRV2_LVL							0xD0
0x1E	CONTCFG8	RW	DRV1_TIME							0x04	
0x1F	CONTCFG9	RW	DRV2_TIME							0x06	
0x20	CONTCFG10	RW	BRK_TIME							0x08	
0x21	CONTCFG11	RW	TRACK_MARGIN							0x11	
0x24	CONTRD14	RO	F_LRA_F0_H							0x00	
0x25	CONTRD15	RO	F_LRA_F0_L							0x00	
0x26	CONTRD16	RO	CONT_F0_H							0x00	

0x27	CONTRD17	RO	CONT_F0_L						0x00		
0x2C	RTPCFG1	RW				BASE_ADDR_H			0x38		
0x2D	RTPCFG2	RW	BASE_ADDR_L						0x00		
0x2E	RTPCFG3	RW	FIFO_AEH			FIFO_AFH			0x26		
0x2F	RTPCFG4	RW	FIFO_AEL						0x00		
0x30	RTPCFG5	RW	FIFO_AFL						0x00		
0x31	RTPCFG6	RW				AUTO_SINE_96K	AUTO_DYNAM_IC_SINE		0x00		
0x32	RTPDATA	RW	RTP_DATA						0x00		
0x33	TRGCFG1	RW	TRG1_POS	TRG1SEQ_P					0x01		
0x34	TRGCFG2	RW	TRG2_POS	TRG2SEQ_P					0x01		
0x35	TRGCFG3	RW	TRG3_POS	TRG3SEQ_P					0x01		
0x36	TRGCFG4	RW	TRG1_NEG	TRG1SEQ_N					0x01		
0x37	TRGCFG5	RW	TRG2_NEG	TRG2SEQ_N					0x01		
0x38	TRGCFG6	RW	TRG3_NEG	TRG3SEQ_N					0x01		
0x39	TRGCFG7	RW			TRG1_POLAR	TRG1_LEV	TRG1_BRK	TRG2_POLAR	TRG2_LEV	TRG2_BRK	0x09
0x3A	TRGCFG8	RW			TRG3_POLAR	TRG3_LEV	TRG3_BRK	TRG1_STOP	TRG2_STOP	TRG3_STOP	0x08
0x3C	GLBCFG2	RW	START_DLY						0x08		
0x3E	GLBCFG4	RW	GO_PRIO	TRG3_PRIO	TRG2_PRIO	TRG1_PRIO			0x1B		
0x3F	GLBRD5	RO	GLB_STATE						0x00		
0x40	RAMADDRH	RWS	RAMADDRH						0x00		
0x41	RAMADDRL	RWS	RAMADDRL						0x00		
0x42	RAMDATA	RWS	RAMDATA						0x00		
0x43	TRGCFG9	RW	TRG_GAIN						0x80		
0x45	SYSTR1	RW	TRG1_MODE			EN_RAMINIT		EN_FIR	INTN_PIN	0x73	
0x46	SYSTR2	RW	WAKE	STANDBY				WAVDAT_MODE	0x00		
0x4A	PWMCFG1	RW	PRC_EN	PRCTIME						0xA0	
0x4B	PWMCFG2	RW				PD_HWM				0x28	
0x4C	PWMCFG3	RW	PR_EN	PRLVL						0xBF	
0x4D	PWMCFG4	RW	PRTIME						0x32		
0x4E	VBATCTRL	RW	VBAT_MODE							0x00	
0x4F	DETCFG1	RW	VBAT_REF			ADC_FS	DET_GO			0x24	
0x50	DETCFG2	RW	DET_SEQ0			D2S_GAIN			0x04		
0x51	DETRD1	RO				ADC_DATA_H	AVG_DATA_H			0x00	
0x52	DETRD2	RO	AVG_DATA_L						0x00		
0x53	DETRD3	RO	ADC_DATA_L						0x00		
0x57	IDH	RO	CHIPID_H						0x23		
0x5A	TRIMCFG2	RW	TRIM_LRA						0x00		
0x69	IDL	RO	CHIPID_L						0x00		
0x72	ANACFG5	RW	UVLO_ADJ						0x13		

## Register Detailed Description

Note: Reserved register should not be write

RSTCFG: (Address 00h)				
Bit	Symbol	R/W	Description	Default
7:0	SOFT_RST	WO	All configuration registers will be reset to default value after 0xaa is written.	0x33

SYSST: (Address 01h)				
Bit	Symbol	R/W	Description	Default
7:6	Reserved	RO	Not used	0
5	UVLS	RO	1: VBAT voltage is under UV voltage (2.7V)	0
4	FF_AES	RO	1: RTP FIFO is almost empty	1
3	FF_AFS	RO	1: RTP FIFO is almost full	0
2	OCDS	RO	1: Over Current status	0
1	OTS	RO	1: Over Temperature status	0
0	DONES	RO	1: The indication of playback finished	0

SYSINT: (Address 02h)				
Bit	Symbol	R/W	Description	Default
7:6	Reserved	RC	Not used	0
5	UVLI	RC	When UVLI=1, it means UVLS has been 1 at least once since the last read	0
4	FF_AEI	RC	When FF_AEI=1, it means FF_AES has been 1 at least once since the last read	1
3	FF_AFI	RC	When FF_AFI=1, it means FF_AFS has been 1 at least once since the last read	0
2	OCDI	RC	When OCDI=1, it means OCDS has been 1 at least once since the last read	0
1	OTI	RC	When OTI=1, it means OTS has been 1 at least once since the last read	0
0	DONEI	RC	When DONEI=1, it means DONES has been 1 at least once since the last read	0

SYSINTM: (Address 03h)				
Bit	Symbol	R/W	Description	Default
7:6	Reserved	RW	Not used	0
5	UVLM	RW	Interrupt mask for UVLI: 0: INTN pin will be pulled down when UVLI=1 1: INTN pin will not be pulled down when UVLI=1	1
4	FF_AEM	RW	Interrupt mask for FF_AEI: 0: INTN pin will be pulled down when FF_AEI=1 1: INTN pin will not be pulled down when FF_AEI=1	1
3	FF_AFM	RW	Interrupt mask for FF_AFI: 0: INTN pin will be pulled down when FF_AFI=1 1: INTN pin will not be pulled down when FF_AFI=1	1
2	OCDM	RW	Interrupt mask for OCDI: 0: INTN pin will be pulled down when OCDI=1 1: INTN pin will not be pulled down when OCDI=1	1
1	OTM	RW	Interrupt mask for OTI: 0: INTN pin will be pulled down when OTI=1 1: INTN pin will not be pulled down when OTI=1	1
0	DONEM	RW	Interrupt mask for DONEI: 0: INTN pin will be pulled down when DONEI=1 1: INTN pin will not be pulled down when DONEI=1	1

SYSST2: (Address 04h)				
Bit	Symbol	R/W	Description	Default
7:4	Reserved	RO	Not used	0
3	LDO_OK	RO	LDO OK indication	1
2:0	Reserved	RO	Not used	5

PLAYCFG2: (Address 07h)				
Bit	Symbol	R/W	Description	Default
7:0	GAIN	RW	gain setting for waveform data of RAM/RTP playback mode, GAIN=code/128	0x80

PLAYCFG3: (Address 08h)				
Bit	Symbol	R/W	Description	Default
7:4	Reserved	RW	Not used	0
3	STOP_MODE	RW	0: stop when current wave is over 1: stop right now	0
2	BRK_EN	RW	When set 1, enable auto brake after RTP/RAM/CONT playback mode is stopped	1
1:0	PLAY_MODE	RW	Waveform play mode for GO TRIG: b00: RAM mode b01: RTP mode b10: CONT mode b11: no play	0

PLAYCFG4: (Address 09h)				
Bit	Symbol	R/W	Description	Default
7:2	Reserved	WC	Not used	0
1	STOP	WC	When set 1, stop the current playback mode	0

0	GO	WC	RAM/RTP/CONT mode playback trigger bit: when set to 1, chip will playback one of the play mode.	0
---	----	----	--	---

WAVCFG1: (Address 0Ah)				
Bit	Symbol	R/W	Description	Default
7	SEQ1WAIT	RW	When set to 1, WAVSEQ1 means wait time, else means wave sequence number	0
6:0	WAVSEQ1	RW	Wait time (code*WAITSLOT) or wave sequence number	1

WAVCFG2: (Address 0Bh)				
Bit	Symbol	R/W	Description	Default
7	SEQ2WAIT	RW	When set to 1, WAVSEQ2 means wait time, else means wave sequence number	0
6:0	WAVSEQ2	RW	Wait time (code*WAITSLOT) or wave sequence number	0

WAVCFG3: (Address 0Ch)				
Bit	Symbol	R/W	Description	Default
7	SEQ3WAIT	RW	When set to 1, WAVSEQ3 means wait time, else means wave sequence number	0
6:0	WAVSEQ3	RW	Wait time (code*WAITSLOT) or wave sequence number	0

WAVCFG4: (Address 0Dh)				
Bit	Symbol	R/W	Description	Default
7	SEQ4WAIT	RW	When set to 1, WAVSEQ4 means wait time, else means wave sequence number	0
6:0	WAVSEQ4	RW	Wait time (code*WAITSLOT) or wave sequence number	0

WAVCFG5: (Address 0Eh)				
Bit	Symbol	R/W	Description	Default
7	SEQ5WAIT	RW	When set to 1, WAVSEQ5 means wait time, else means wave sequence number	0
6:0	WAVSEQ5	RW	Wait time (code*WAITSLOT) or wave sequence number	0

WAVCFG6: (Address 0Fh)				
Bit	Symbol	R/W	Description	Default
7	SEQ6WAIT	RW	When set to 1, WAVSEQ6 means wait time, else means wave sequence number	0
6:0	WAVSEQ6	RW	Wait time (code*WAITSLOT) or wave sequence number	0

WAVCFG7: (Address 10h)				
Bit	Symbol	R/W	Description	Default
7	SEQ7WAIT	RW	When set to 1, WAVSEQ7 means wait time, else means wave sequence number	0
6:0	WAVSEQ7	RW	Wait time (code*WAITSLOT) or wave sequence number	0

WAVCFG8: (Address 11h)				
Bit	Symbol	R/W	Description	Default
7	SEQ8WAIT	RW	When set to 1, WAVSEQ8 means wait time, else means wave sequence number	0
6:0	WAVSEQ8	RW	Wait time (code*WAITSLOT) or wave sequence number	0

WAVCFG9: (Address 12h)				
Bit	Symbol	R/W	Description	Default
7:4	SEQ1LOOP	RW	Control the loop number of the first sequence: b0000~b1110: play (code+1) time b1111: playback infinitely until STOP set to 1 or SEQ1LOOP ≠0xF	0
3:0	SEQ2LOOP	RW	Control the loop number of the second sequence: b0000~b1110: play (code+1) time b1111: playback infinitely until STOP set to 1 or SEQ2LOOP ≠0xF	0

WAVCFG10: (Address 13h)				
Bit	Symbol	R/W	Description	Default
7:4	SEQ3LOOP	RW	Control the loop number of the third sequence: b0000~b1110: play (code+1) time b1111: playback infinitely until STOP set to 1 or SEQ3LOOP ≠0xF	0

3:0	SEQ4LOOP	RW	Control the loop number of the fourth sequence: b0000~b1110: play (code+1) time b1111: playback infinitely until STOP set to 1 or SEQ4LOOP ≠0xF	0
-----	----------	----	---	---

WAVCFG11: (Address 14h)				
Bit	Symbol	R/W	Description	Default
7:4	SEQ5LOOP	RW	Control the loop number of the fifth sequence: b0000~b1110: play (code+1) time b1111: playback infinitely until STOP set to 1 or SEQ5LOOP ≠0xF	0
3:0	SEQ6LOOP	RW	Control the loop number of the sixth sequence: b0000~b1110: play (code+1) time b1111: playback infinitely until STOP set to 1 or SEQ6LOOP ≠0xF	0

WAVCFG12: (Address 15h)				
Bit	Symbol	R/W	Description	Default
7:4	SEQ7LOOP	RW	Control the loop number of the seventh sequence: b0000~b1110: play (code+1) time b1111: playback infinitely until STOP set to 1 or SEQ7LOOP ≠0xF	0
3:0	SEQ8LOOP	RW	Control the loop number of the eighth sequence: b0000~b1110: play (code+1) time b1111: playback infinitely until STOP set to 1 or SEQ8LOOP ≠0xF	0

WAVCFG13: (Address 16h)				
Bit	Symbol	R/W	Description	Default
7:6	Reserved	RW	Not used	0
5:4	WAITSLLOT	RW	Unit of wait time b00: (1/WAVDAT_MODE)s b01: (8/WAVDAT_MODE)s b10: (64/WAVDAT_MODE)s b11: (512/WAVDAT_MODE)s	0
3:0	MAINLOOP	RW	Control the main loop number: b0000~b1110: play (code+1) time b1111: playback infinitely until STOP set to 1 or MAINLOOP ≠ 0xF	0

CONTCFG1: (Address 17h)				
Bit	Symbol	R/W	Description	Default
7:6	Reserved	RW	Not used	0
5	EN_F0_DET	RW	F0 detection mode enable 0: disable 1: enable	0
4	SIN_MODE	RW	Edge mode for cont wave: 0: sine 1: cos	1
3:0	EDGE_FRE	RW	Define the edge frequency: b1000: 200Hz b1001: 210Hz b1010: 260Hz b1011: 280Hz b1100: 300Hz b1101: 600Hz b1110: 700Hz b1111: 800Hz b0000-b0111: no edge control	14

CONTCFG2: (Address 18h)				
Bit	Symbol	R/W	Description	Default
7:0	F_PRE	RW	Set the value of F0, F0=(24K/code)Hz	0x8D

CONTCFG3: (Address 19h)				
Bit	Symbol	R/W	Description	Default

7:0	DRV_WIDTH	RW	Half cycle drive time of brake, this value must be smaller than half cycle time of F0. Time = code/48000 (s)	0x6A
-----	-----------	----	---	------

CONTCFG4: (Address 1Ah)				
Bit	Symbol	R/W	Description	Default
7:0	WAIT_NUM	RW	Loop decay time, unit (1/48k)s.	6

CONTCFG5: (Address 1Bh)				
Bit	Symbol	R/W	Description	Default
7:4	Reserved	RW	Not used	0
3:0	BRK_GAIN	RW	Gain factor of brake	8

CONTCFG6: (Address 1Ch)				
Bit	Symbol	R/W	Description	Default
7	TRACK_EN	RW	Track switch: 0: disable 1: enable	1
6:0	DRV1_LVL	RW	Level for the first cont drive. When VBAT_MODE=1: no load output voltage=VBAT_REF*DRV1_LVL/128; if (VBAT_REF*DRV1_LVL)/VBAT > 128, no load output voltage=VDD; When VBAT_MODE=0: no load output voltage=VDD*DRV1_LVL/128	0x7F

CONTCFG7: (Address 1Dh)				
Bit	Symbol	R/W	Description	Default
7	Reserved	RW	Not used	1
6:0	DRV2_LVL	RW	Level for the second cont drive. when VBAT_MODE=1: no load output voltage=VBAT_REF*DRV2_LVL/128; if (VBAT_REF*DRV2_LVL)/VBAT > 128, no load output voltage=VDD; When VBAT_MODE=0: no load output voltage=VDD*DRV2_LVL/128	0x50

CONTCFG8: (Address 1Eh)				
Bit	Symbol	R/W	Description	Default
7:0	DRV1_TIME	RW	Number of half cycle for the first cont drive	4

CONTCFG9: (Address 1Fh)				
Bit	Symbol	R/W	Description	Default
7:0	DRV2_TIME	RW	Number of half cycle for the second cont drive.	6

CONTCFG10: (Address 20h)				
Bit	Symbol	R/W	Description	Default
7:0	BRK_TIME	RW	The number of half cycle of brake mode	8

CONTCFG11: (Address 21h)				
Bit	Symbol	R/W	Description	Default
7:0	TRACK_MARGIN	RW	Margin value of tracking, the smaller margin, the higher tracking accuracy and the lower loop stability.	0x11

CONTRD14: (Address 24h)				
Bit	Symbol	R/W	Description	Default
7:0	F_LRA_F0_H	RO	High 8 bit of the measure value for the f0 of LRA in the f0 detection mode $F0=(384000/(F\_LRA\_F0\_H*256+F\_LRA\_F0\_L))Hz$	0

CONTRD15: (Address 25h)				
Bit	Symbol	R/W	Description	Default

7:0	F_LRA_F0_L	RO	Low 8 bit of the measure value for the f0 of LRA in the f0 detection mode $F0=(384000/(F\_LRA\_F0\_H*256+F\_LRA\_F0\_L))Hz$	0
-----	------------	----	--	---

CONTRD16: (Address 26h)				
Bit	Symbol	R/W	Description	Default
7:0	CONT_F0_H	RO	The measure value for the f0 of LRA in the continuous detection mode(high eight bits) $F0=(384000/(CONT\_F0\_H*256+CONT\_F0\_L))Hz$	0

CONTRD17: (Address 27h)				
Bit	Symbol	R/W	Description	Default
7:0	CONT_F0_L	RO	The measure value for the f0 of LRA in the continuous detection mode(low eight bits) $F0=(384000/(CONT\_F0\_H*256+CONT\_F0\_L))Hz$	0

RTPCFG1: (Address 2Ch)				
Bit	Symbol	R/W	Description	Default
7:4	Reserved	RW	Not used	0
3:0	BASE_ADDR_H	RW	High 4 bits of start address of wave SRAM $BASE\_ADDR = BASE\_ADDR\_H * 256 + BASE\_ADDR\_L$	0x08

RTPCFG2: (Address 2Dh)				
Bit	Symbol	R/W	Description	Default
7:0	BASE_ADDR_L	RW	Low 8 bits of start address of wave SRAM $BASE\_ADDR = BASE\_ADDR\_H * 256 + BASE\_ADDR\_L$	0

RTPCFG3: (Address 2Eh)				
Bit	Symbol	R/W	Description	Default
7:4	FIFO_AEH	RW	High four bits of RTP FIFO almost empty threshold $FIFO\_AE = FIFO\_AEH * 256 + FIFO\_AEL$	0x02
3:0	FIFO_AFH	RW	High four bits of RTP FIFO almost full threshold $FIFO\_AF = FIFO\_AFH * 256 + FIFO\_AFL$	0x06

RTPCFG4: (Address 2Fh)				
Bit	Symbol	R/W	Description	Default
7:0	FIFO_AEL	RW	Low eight bits of RTP FIFO almost empty threshold $FIFO\_AE = FIFO\_AEH * 256 + FIFO\_AEL$	0x00

RTPCFG5: (Address 30h)				
Bit	Symbol	R/W	Description	Default
7:0	FIFO_AFL	RW	Low eight bits of RTP FIFO almost full threshold $FIFO\_AF = FIFO\_AFH * 256 + FIFO\_AFL$	0x00

RTPCFG6: (Address 31h)				
Bit	Symbol	R/W	Description	Default
7:4	reserved	RW	Not used	0
3	AUTO_SIN_96K	RW	Set sampling rate of rtp auto sin function: 0: 48K 1: 96K	0
2	AUTO_DYNAMIC_SINE	RW	Five data generate a half-period sin waveform with amplitude of 127. The order of the 5 data is as follows: $\sinh [7:0], \sin [7:0], \cosh [7:0], \cos [7:0], \text{rtp\_gain}[7:0]$ $[\sinh, \sin] = 65536 * \sin(2 * \pi * \text{wav\_frequency} / \text{sampling rate})$ $[\cosh, \cos] = 65536 * \cos(2 * \pi * \text{wav\_frequency} / \text{sampling rate})$ rtp_gain control sin wave gain, gain = rtp_gain/128 0: disable 1: enable	0
1:0	reserved	RW	Not used	0

RTPDATA: (Address 32h)				
------------------------	--	--	--	--

Bit	Symbol	R/W	Description	Default
7:0	RTP_DATA	RW	RTP mode, data write entry, when data written into this register, the data will be written into RTP FIFO	0

TRGCFG1: (Address 33h)				
Bit	Symbol	R/W	Description	Default
7	TRG1_POS	RW	TRG1 rising edge enable/disable control 0: disable 1: enable	0
6:0	TRG1SEQ_P	RW	TRIG1 positive edge triggered wave sequence number	1

TRGCFG2: (Address 34h)				
Bit	Symbol	R/W	Description	Default
7	TRG2_POS	RW	TRG2 rising edge enable/disable control 0: disable 1: enable	0
6:0	TRG2SEQ_P	RW	TRIG2 positive edge triggered wave sequence number	1

TRGCFG3: (Address 35h)				
Bit	Symbol	R/W	Description	Default
7	TRG3_POS	RW	TRG3 rising edge enable/disable control 0: disable 1: enable	0
6:0	TRG3SEQ_P	RW	TRIG3 positive edge triggered wave sequence number	1

TRGCFG4: (Address 36h)				
Bit	Symbol	R/W	Description	Default
7	TRG1_NEG	RW	TRG1 falling edge enable/disable control 0: disable 1: enable	0
6:0	TRG1SEQ_N	RW	TRIG1 negative edge triggered wave sequence number	1

TRGCFG5: (Address 37h)				
Bit	Symbol	R/W	Description	Default
7	TRG2_NEG	RW	TRG2 falling edge enable/disable control 0: disable 1: enable	0
6:0	TRG2SEQ_N	RW	TRIG2 negative edge triggered wave sequence number	1

TRGCFG6: (Address 38h)				
Bit	Symbol	R/W	Description	Default
7	TRG3_NEG	RW	TRG3 falling edge enable/disable control 0: disable 1: enable	0
6:0	TRG3SEQ_N	RW	TRIG3 negative edge triggered wave sequence number	1

TRGCFG7: (Address 39h)				
Bit	Symbol	R/W	Description	Default
7:6	Reserved	RW	Not used	0
5	TRG1_POLAR	RW	TRIG1 pin active polarity, when host supply positive level, this bit set to 0, else set to 1	0
4	TRG1_LEV	RW	TRG1 mode control 0: edge 1: level	0
3	TRG1_BRK	RW	When set 1, enable auto brake after TRG1 playback mode is stopped	1
2	TRG2_POLAR	RW	TRIG2 pin active polarity, when host supply positive level, this bit set to 0, else set to 1	0

1	TRG2_LEV	RW	TRG2 mode control 0: disable 1: enable	0
0	TRG2_BRK	RW	When set 1, enable auto brake after TRG2 playback mode is stopped	1

TRGCFG8: (Address 3Ah)				
Bit	Symbol	R/W	Description	Default
7:6	Reserved	RW	Not used	0
5	TRG3_POLAR	RW	TRIG3 pin active polarity, when host supply positive level, this bit set to 0, else set to 1	0
4	TRG3_LEV	RW	TRG3 mode control: 0: edge 1: level	0
3	TRG3_BRK	RW	When set 1, enable auto brake after TRG3 playback mode is stopped	1
2	TRG1_STOP	RW	When set 1, TRG1 playback mode can be stopped immediately	0
1	TRG2_STOP	RW	When set 1, TRG2 playback mode can be stopped immediately	0
0	TRG3_STOP	RW	When set 1, TRG3 playback mode can be stopped immediately	0

GLBCFG2: (Address 3Ch)				
Bit	Symbol	R/W	Description	Default
7:0	START_DLY	RW	Startup delay time, unit time is (1/48k)s	0x08

GLBCFG4: (Address 3Eh)				
Bit	Symbol	R/W	Description	Default
7:6	GO_Prio	RW	Priority value of GO TRIG High priority can interrupt the playback of low priority, and low priority cannot interrupt the playback of high priority. When the priority settings are consistent, the default priority will be implemented	0
5:4	TRG3_Prio	RW	Priority value of TRIG 3 pin High priority can interrupt the playback of low priority, and low priority cannot interrupt the playback of high priority. When the priority settings are consistent, the default priority will be implemented	1
3:2	TRG2_Prio	RW	Priority value of TRIG 2 pin High priority can interrupt the playback of low priority, and low priority cannot interrupt the playback of high priority. When the priority settings are consistent, the default priority will be implemented	2
1:0	TRG1_Prio	RW	Priority value of TRIG 1 pin High priority can interrupt the playback of low priority, and low priority cannot interrupt the playback of high priority. When the priority settings are consistent, the default priority will be implemented	3

GLBRD5: (Address 3Fh)				
Bit	Symbol	R/W	Description	Default
7:4	Reserved	RW	Not used	0
3:0	GLB_STATE	RO	The state of global state b0000: STANDBY b0110: CONT b0111: RAM b1000: RTP b1001: TRIG b1011: BRAKE	0

RAMADDRH: (Address 40h)				
Bit	Symbol	R/W	Description	Default
7:4	Reserved	RWS	Not used	0
3:0	RAMADDRH	RWS	SRAM address high five bits	0

RAMADDRL: (Address 41h)				
Bit	Symbol	R/W	Description	Default
7:0	RAMADDRL	RWS	SRAM address low eight bits	0

RAMDATA: (Address 42h)				
Bit	Symbol	R/W	Description	Default
7:0	RAMDATA	RWS	SRAM data entry	0

TRGCFG9: (Address 43h)				
Bit	Symbol	R/W	Description	Default
7:0	TRG_GAIN	RW	Gain setting for waveform data of TRIG playback mode, GAIN=code/128	0x80

SYSCTRL1: (Address 45h)				
Bit	Symbol	R/W	Description	Default
7	Reserved	RW	Not used	0
6:4	TRG1_MODE	RW	Select PAD_TRIG1 feature: b000: PWM_LRA b001: PWM_ERM b011: TRIG Others: None	7
3	Reserved	RW	Not used	0
2	EN_RAMINIT	RW	Enable SRAM initialization for effects: after power up, system should initial SRAM for preload effects, to do so, this bit must be set to 1	0
1	EN_FIR	RW	Set enable of FIR filter	1
0	INTN_PIN	RW	0: INTN/TRIG used as TRIG1 1: INTN/TRIG used as INTN	1

SYSCTRL2: (Address 46h)				
Bit	Symbol	R/W	Description	Default
7	WAKE	RW	Chip enable control 1: set chip into active mode	0
6	STANDBY	RW	Chip disable control: 0: chip at normal mode 1: set chip into standby mode	0
5:2	Reserved	RW	Not used	0
1:0	WAVDAT_MODE	RW	Waveform data up-sampling rate selection: b00: 24kHz b01: 48kHz others: 12kHz rate	0

PWMCFG1: (Address 4Ah)				
Bit	Symbol	R/W	Description	Default
7	PRC_EN	RW	When HDP/HDN keeps high maintains (PRCTIME/3k)s, HDP/HDN is pulled down protectively 0: disable 1: enable	1
6:0	PRCTIME	RW	Set protection time of output signal protection mode of pwm, unit time is (1/3k) s.	0x20

PWMCFG2: (Address 4Bh)				
Bit	Symbol	R/W	Description	Default
7:5	Reserved	RW	Not used	1
4	PD_HWM	RW	shutdown half wave modulate 0: half wave mode 1: full wave mode	0
3:0	Reserved	RW	Not used	8

PWMCFG3: (Address 4Ch)				
Bit	Symbol	R/W	Description	Default
7	PR_EN	RW	When wave data larger than PRLVL maintains (PRTIME/3k)s, HDP/HDN is pulled down protectively 0: disable 1: enable	1

6:0	PRLVL	RW	Set protection voltage of input signal protection mode of pwm.	0x3F
-----	-------	----	--	------

PWMCFG4: (Address 4Dh)				
Bit	Symbol	R/W	Description	Default
7:0	PRTIME	RW	Set protection time of input signal protection mode of pwm, unit time is (1/3k) s.	0x32

VBATCTRL: (Address 4Eh)				
Bit	Symbol	R/W	Description	Default
7	Reserved	RW	Not used	0
6	VBAT_MODE	RW	VBAT adjust mode: 0: Software adjust mode 1: Hardware adjust mode	0
5:0	Reserved	RW	Not used	0

DETCFG1: (Address 4Fh)				
Bit	Symbol	R/W	Description	Default
7	Reserved	RW	Not used	0
6:4	VBAT_REF	RW	Reference voltage for VBAT hardware adjust mode: b000: 3.3V b001: 3.6V b010: 4.0V b011: 4.2V b100: 4.5V b101: 4.8V b110: 5.0V b111: 5.5V When VBAT_MODE=1: no load output voltage=VBAT_REF*WAV_CODE/128; if (VBAT_REF*DRV1_LVL)/VBAT > 128, no load output voltage=VDD; When VBAT_MODE=0: no load output voltage=VDD*WAV_CODE/128(WAV_CODE is output waveform code)	2
3:2	ADC_FS	RW	ADC clock sampling rate: b00: 192kHz(ADC_CLK=6.144MHz) b01: 96kHz(ADC_CLK=3.072MHz) b10: 48kHz(ADC_CLK=1.536MHz) b11: 24kHz(ADC_CLK=768kHz)	1
1:0	DET_GO	RW	ADC sampling mode control: b01: detect Others: not detect	0

DETCFG2: (Address 50h)				
Bit	Symbol	R/W	Description	Default
7	Reserved	RW	Not used	0
6:3	DET_SEQ0	RW	Sequence0 detect type control: b0000: VBAT b0011: RL b0100: OS Others: None	0
2:0	D2S_GAIN	RW	Set D2S gain: b000: 1 b001: 2 b010: 4 b011: 5 b100: 8 b101: 10 b110: 20 b111: 40	4

DETRD1: (Address 51h)				
-----------------------	--	--	--	--

Bit	Symbol	R/W	Description	Default
7:4	Reserved	RO	Not used	0
3:2	ADC_DATA_H	RO	High 2 bit ADC data	0
1:0	AVG_DATA_H	RO	High 2 bit ADC average data	0

DETRD2: (Address 52h)				
Bit	Symbol	R/W	Description	Default
7:0	AVG_DATA_L	RO	Low 8 bit ADC average data	0

DETRD3: (Address 53h)				
Bit	Symbol	R/W	Description	Default
7:0	ADC_DATA_L	RO	Low 8 bit ADC data	0

IDH: (Address 57h)				
Bit	Symbol	R/W	Description	Default
7:0	CHIPID_H	RO	High 8bit CHIP ID	0x23

TRIMCFG2: (Address 5Ah)				
Bit	Symbol	R/W	Description	Default
7:6	Reserved	RW	Not used	0
5:0	TRIM_LRA	RW	Change the frequency of output waveform, and one LSB is 0.24% b011111: 31xLSB b011110: 30xLSB ..... b000001: 1xLSB b000000: 0xLSB b111111: -1xLSB ..... b100001: -31xLSB b100000: -32xLSB	0

IDL: (Address 69h)				
Bit	Symbol	R/W	Description	Default
7:0	CHIPID_L	RO	Low 8bit CHIP ID	0x40

ANACFG5: (Address 72h)				
Bit	Symbol	R/W	Description	Default
7:2	Reserved	RW	Not used	0x04
1:0	UVLO_ADJ	RW	UVLO voltage setup: b00: 2.4~2.5V b01: 2.5~2.6V b10: 2.6~2.7V b11: 2.7~2.8V	3

## Application Information

### Capacitors Selection

#### SUPPLY DECOUPLING CAPACITOR (CS)

The device requires adequate power supply decoupling. Place a low equivalent-series-resistance (ESR) ceramic capacitor, typically  $0.1\mu\text{F}$ . This choice of capacitor and placement helps with higher frequency transients, spikes, or digital hash on the line. Additionally, placing this decoupling capacitor close to the device is important, as any parasitic resistance or inductance between the device and the capacitor causes efficiency loss. In addition to the  $0.1\mu\text{F}$  ceramic capacitor, place a  $10\mu\text{F}$  capacitor on the VDD supply trace. This larger capacitor acts as a charge reservoir, providing energy faster than the board supply, thus helping to prevent any droop in the supply voltage.

#### OUTPUT BEADS, CAPACITORS

The device output is a square wave signal, which causing switch current at the output capacitor, increasing static power consumption, and therefore output capacitor should not be too large,  $0.1\text{nF}$  ceramic capacitors is recommended.

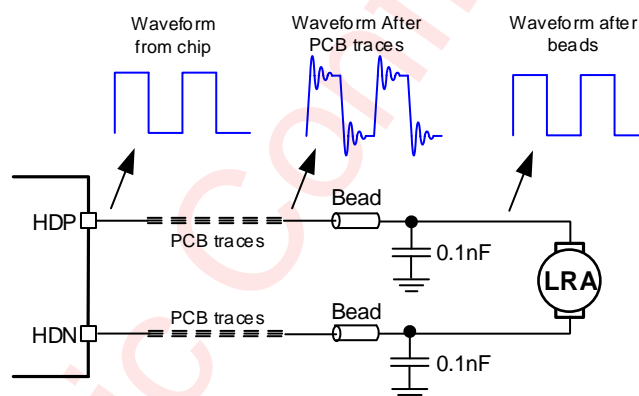


Figure 30 Ferrite Chip Bead and capacitor

The device output is a square wave signal. The voltage across the capacitor will be much larger than the VDD voltage after increasing the bead capacitor. It suggested the use of rated voltage above 10V capacitor. At the same time a square wave signal at the output capacitor switching current form, the static power consumption increases, so the output capacitance should not be too much which is recommended  $0.1\text{nF}$  ceramic capacitor rated voltage of 10V. If you want to get better EMI suppression performance, can use  $1\text{nF}$ , rated voltage 10V capacitor, but quiescent current will increase.

### PCB Layout Consideration

To obtain the optimal performance, PCB layout should be considered carefully. The suggested Layout is illustrated in the following diagram:

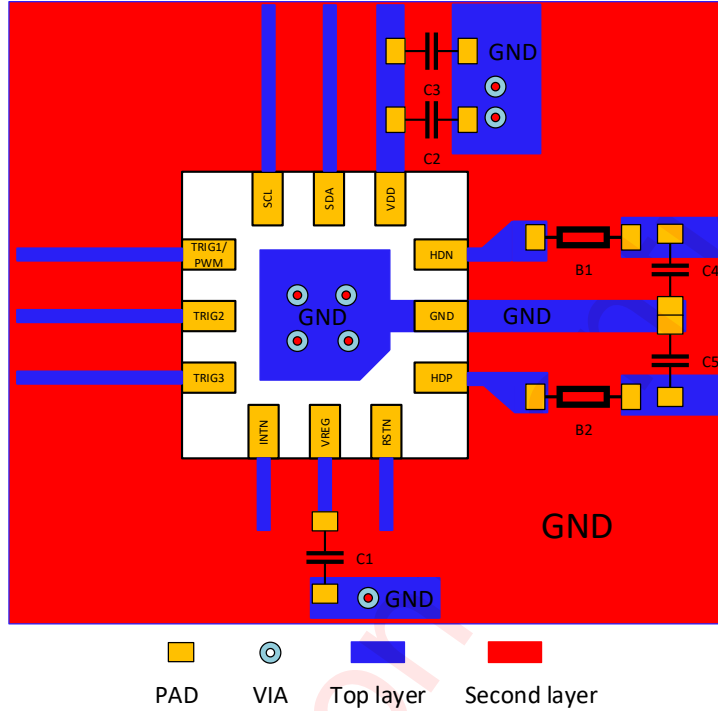


Figure 31 AW86233 Board Layout

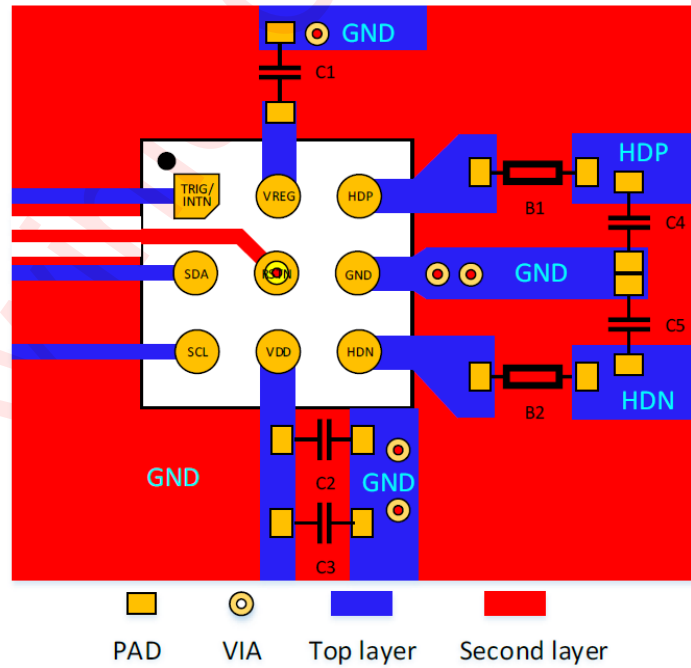


Figure 32 AW86234 Board Layout

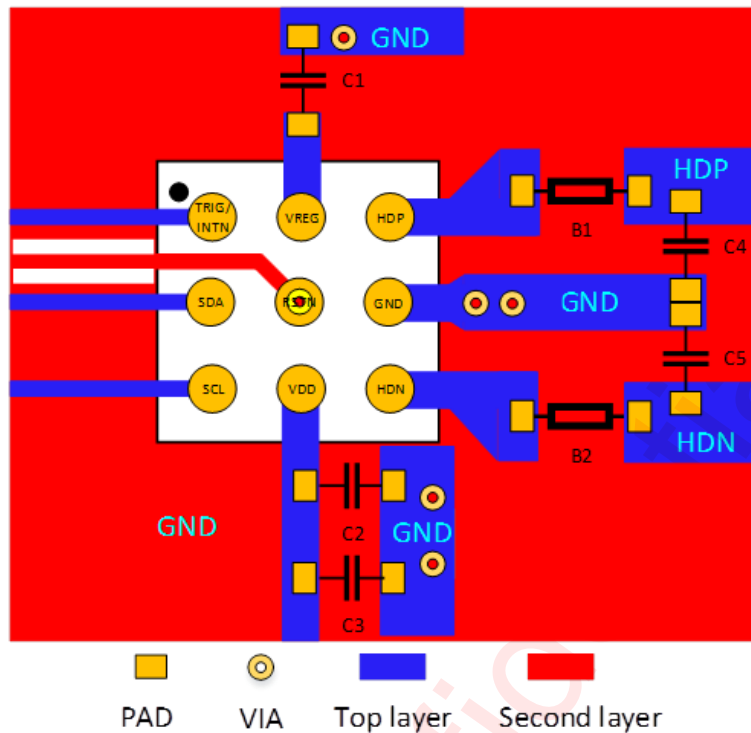


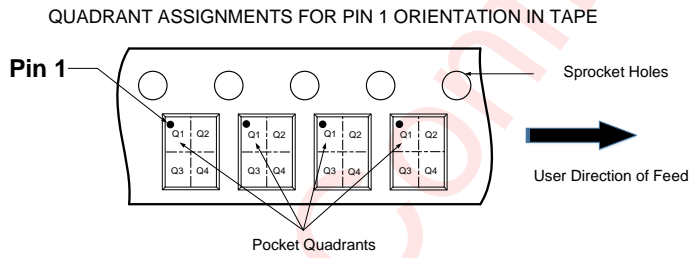
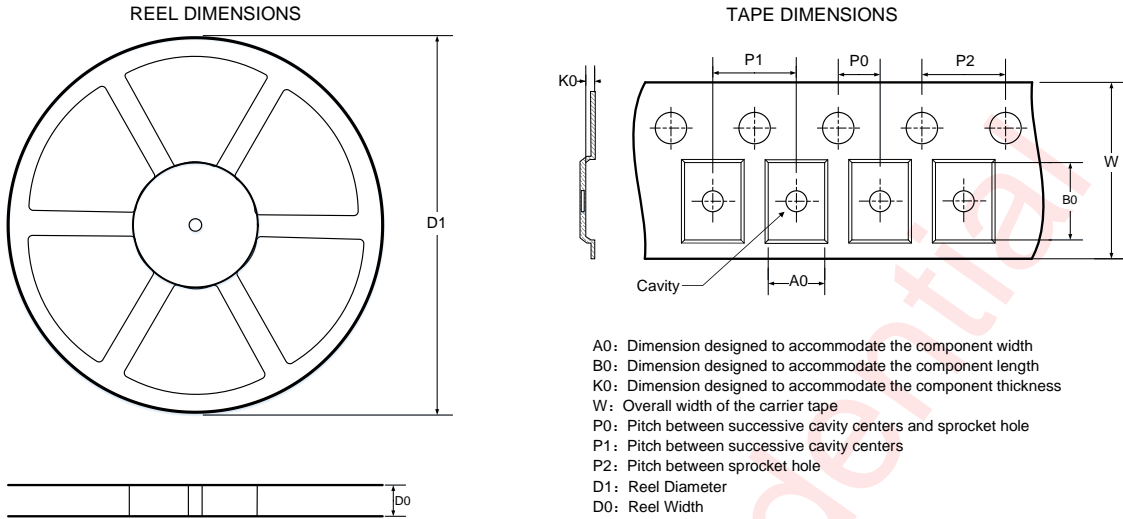
Figure 33 AW86235 Board Layout

PCB Layout Guidelines:

1. Devices around the chip should be placed as close as possible to the chip pins.
2. I2C are recommended to be shield by gnd.
3. VDD/VREG power supply lines are as short and thick as possible. The current flow capacity of the traces not be less than  $\frac{VDD}{(RL+Rdson)*\eta}$ . ( RL is motor DC impedance,  $\eta$  is chip overall efficiency takes 80%)
4. HDP/HDN lines are as short and thick as possible. and the current flow capacity of the traces not be less than  $\frac{VDD}{(RL+Rdson)}$
5. HDP, HDN are recommended to be shield by gnd, away from interfering sources (especially FLY capacitors of high power charge IC), otherwise F0 detection may be inaccurate.

## Tape And Reel Information

AW86233QNR/ AW86233AQNR:



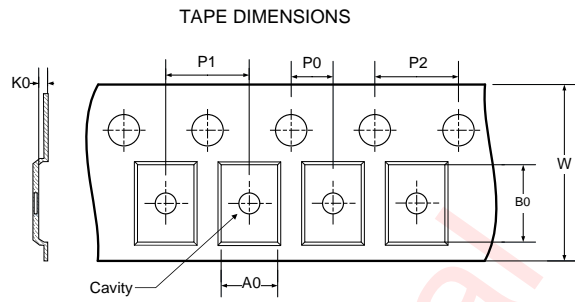
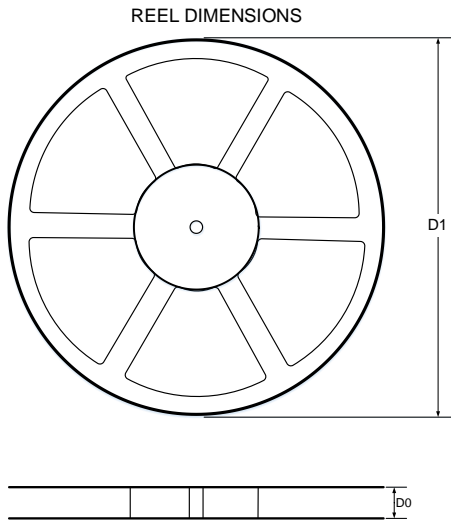
Note: The above picture is for reference only. Please refer to the value in the table below for the actual size

DIMENSIONS AND PIN1 ORIENTATION

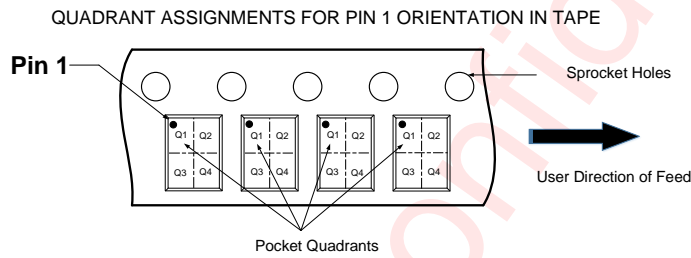
D1 (mm)	D0 (mm)	A0 (mm)	B0 (mm)	K0 (mm)	P0 (mm)	P1 (mm)	P2 (mm)	W (mm)	Pin1 Quadrant
178	8.4	2.25	2.25	0.75	2	4	4	8	Q1

All dimensions are nominal

AW86234FCR/ AW86234AFCR:



- A0: Dimension designed to accommodate the component width
- B0: Dimension designed to accommodate the component length
- K0: Dimension designed to accommodate the component thickness
- W: Overall width of the carrier tape
- P0: Pitch between successive cavity centers and sprocket hole
- P1: Pitch between successive cavity centers
- P2: Pitch between sprocket hole
- D1: Reel Diameter
- D0: Reel Width



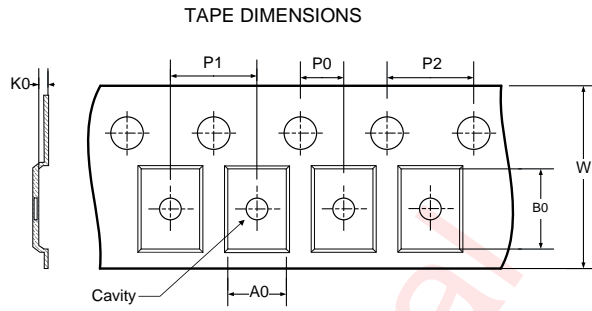
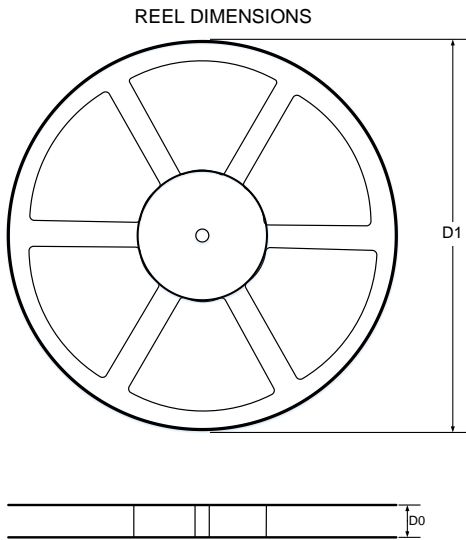
Note: The above picture is for reference only. Please refer to the value in the table below for the actual size

DIMENSIONS AND PIN1 ORIENTATION

D1 (mm)	D0 (mm)	A0 (mm)	B0 (mm)	K0 (mm)	P0 (mm)	P1 (mm)	P2 (mm)	W (mm)	Pin1 Quadrant
178	8.4	1.55	1.55	0.55	2	4	4	8	Q1

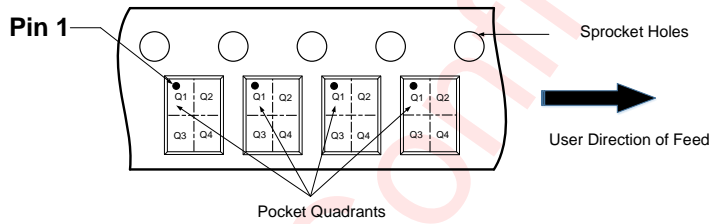
All dimensions are nominal

AW86235CSR/ AW86235ACSR:



A0: Dimension designed to accommodate the component width  
 B0: Dimension designed to accommodate the component length  
 K0: Dimension designed to accommodate the component thickness  
 W: Overall width of the carrier tape  
 P0: Pitch between successive cavity centers and sprocket hole  
 P1: Pitch between successive cavity centers  
 P2: Pitch between sprocket hole  
 D1: Reel Diameter  
 D0: Reel Width

QUADRANT ASSIGNMENTS FOR PIN 1 ORIENTATION IN TAPE



Note: The above picture is for reference only. Please refer to the value in the table below for the actual size

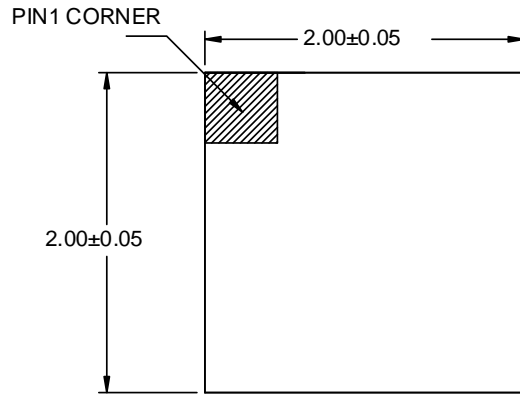
DIMENSIONS AND PIN1 ORIENTATION

D1 (mm)	D0 (mm)	A0 (mm)	B0 (mm)	K0 (mm)	P0 (mm)	P1 (mm)	P2 (mm)	W (mm)	Pin1 Quadrant
178	8.4	1.13	1.13	0.72	2	4	4	8	Q1

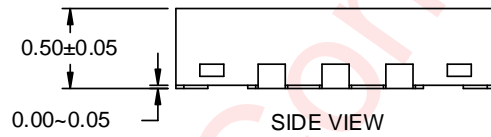
All dimensions are nominal

## Package Description

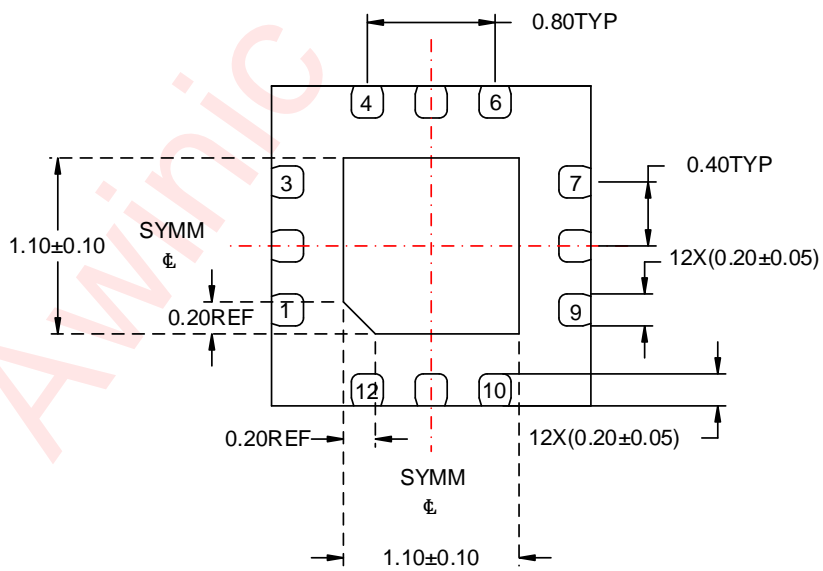
AW86233QNR/ AW86233AQNR:



TOP VIEW



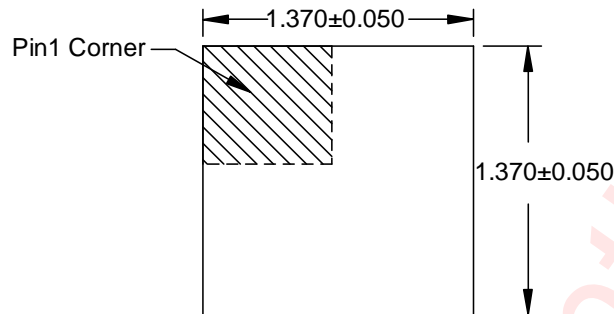
SIDE VIEW



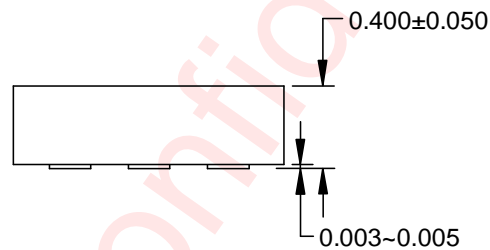
BOTTOM VIEW

Unit: mm

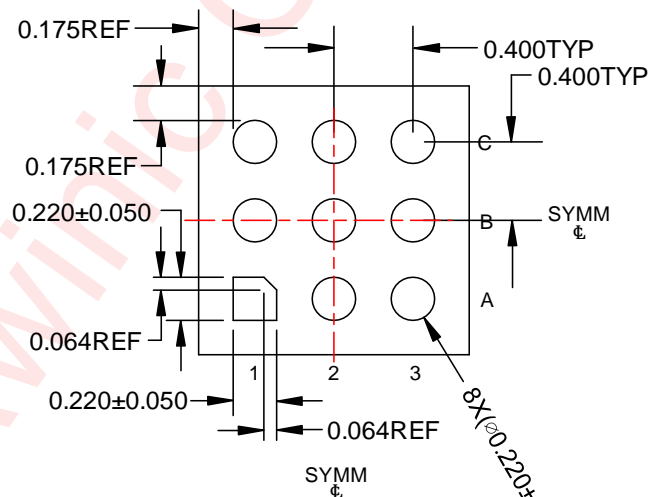
AW86234FCR/ AW86234AFCR:



**TOP VIEW**



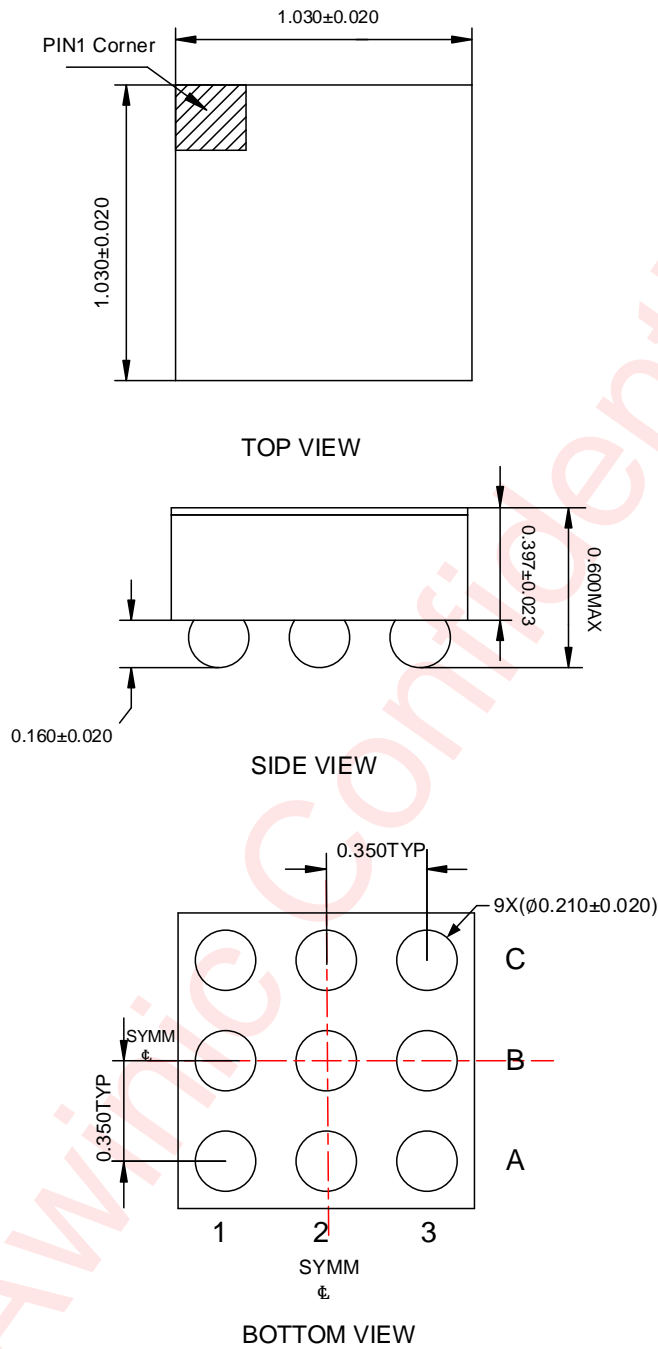
**SIDE VIEW**



**BOTTOM VIEW**

Unit:mm

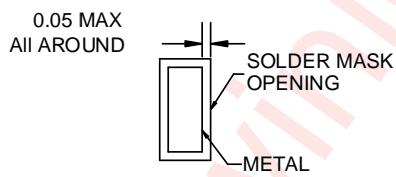
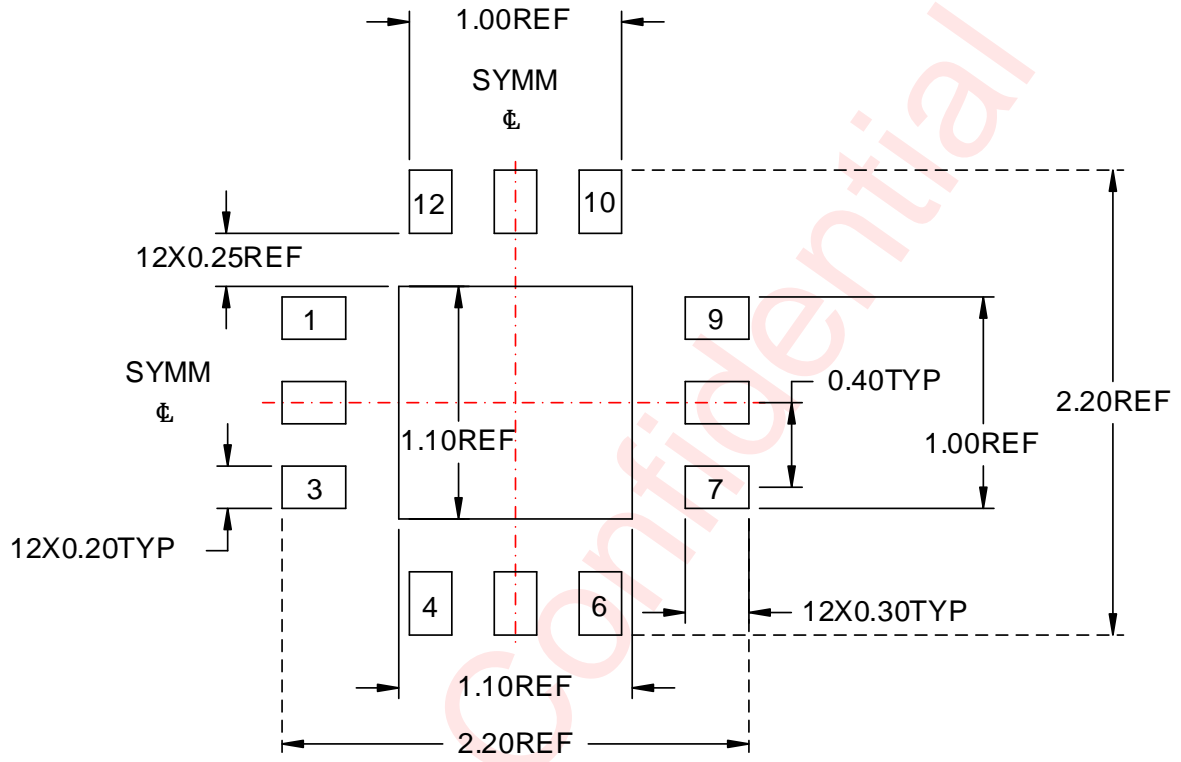
AW86235CSR/ AW86235ACSR:



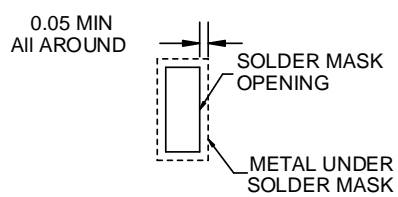
Unit: mm

Land Pattern Data

AW86233QNR/ AW86233AQNR:



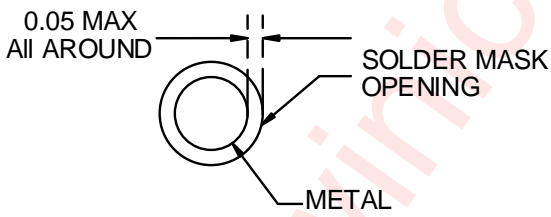
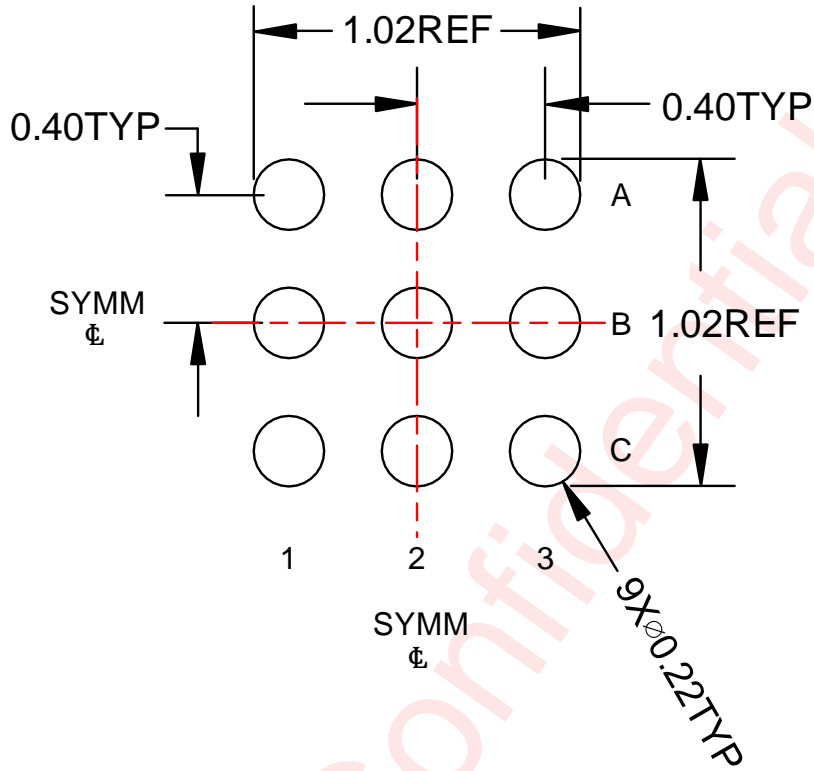
NON SOLDER MASK DEFINED



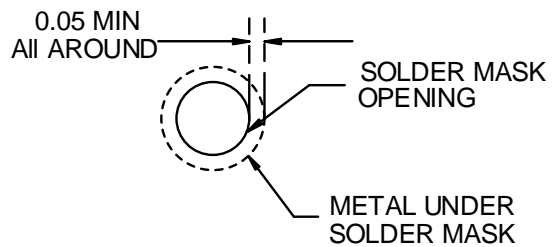
SOLDER MASK DEFINED

Unit: mm

AW86234FCR/ AW86234AFCR:



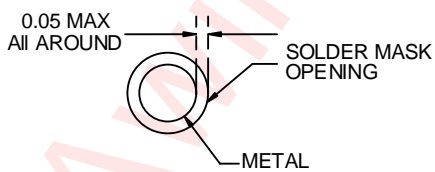
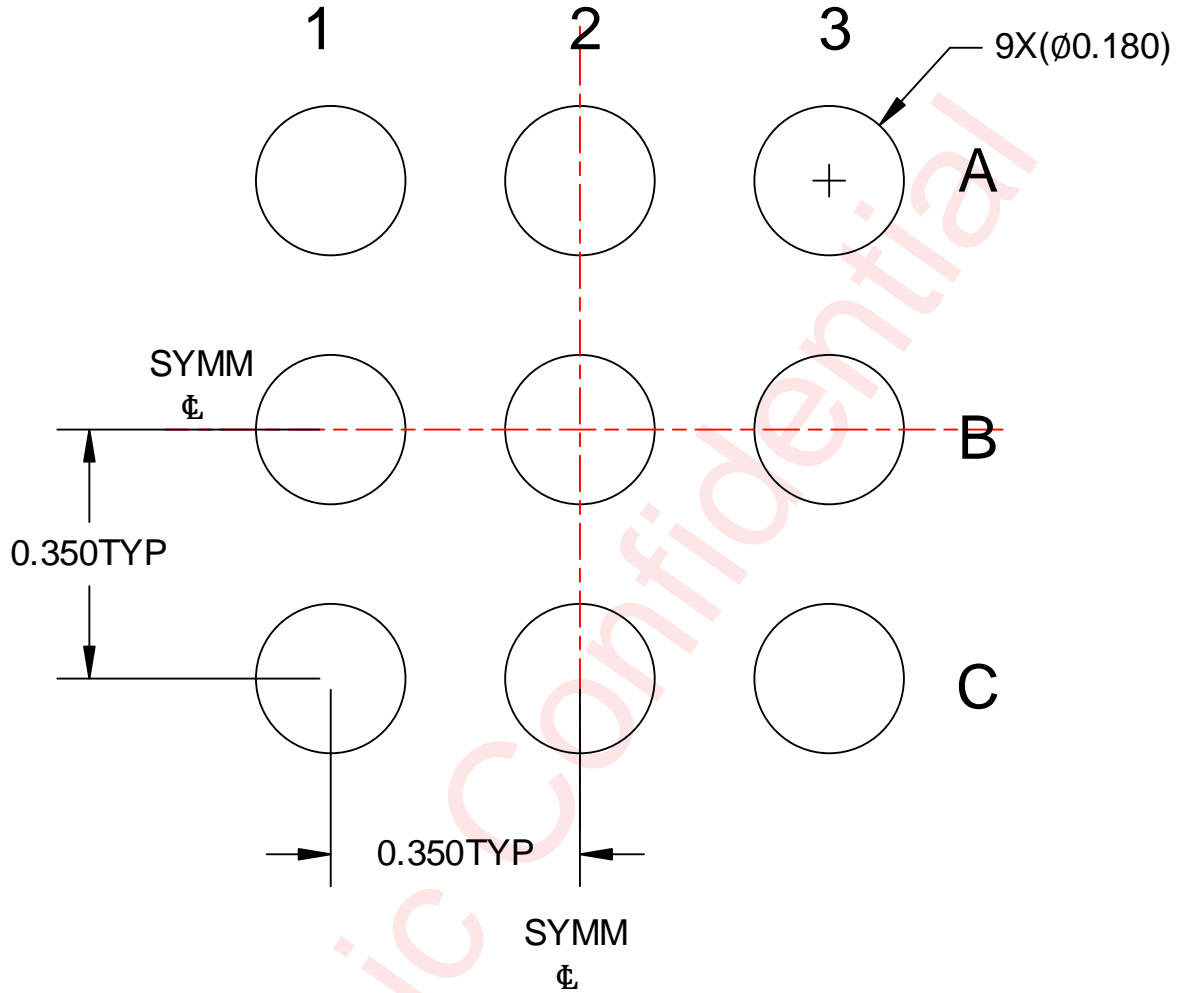
NON-SOLDER MASK DEFINED



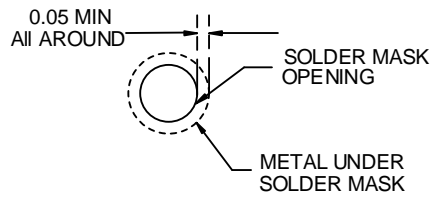
SOLDER MASK DEFINED

Unit: mm

AW86235CSR/ AW86235ACSR:



NON-SOLDER MASK DEFINED



SOLDER MASK DEFINED

Unit: mm

## Revision History

Version	Date	Change Record
V1.0	January 2023	Official Version
V1.1	August 2023	1.Revise the power supply voltage range from 2.7 to 5.5V 2.Open the register and description of UVLO_ADJ
V1.2	September 2023	Modify Pin Definition and Typical Application Circuits Modify Thermal Information Modify Sram Structure
V1.3	July 2024	Add AW86233AQNR/AW86234AFCR/AW86235ACSR part
V1.4	August 2025	Modify the value of Rdson in the EC table

## Disclaimer

Information in this document is believed to be accurate and reliable. However, Shanghai AWINIC Technology Co., Ltd (AWINIC Technology) does not give any representations or warranties, expressed or implied, as to the accuracy or completeness of such information and shall have no liability for the consequences of use of such information.

AWINIC Technology reserves the right to make changes to information published in this document, including without limitation specifications and product descriptions, at any time and without notice. Customers shall obtain the latest relevant information before placing orders and shall verify that such information is current and complete. This document supersedes and replaces all information supplied prior to the publication hereof.

AWINIC Technology products are not designed, authorized or warranted to be suitable for use in medical, military, aircraft, space or life support equipment, nor in applications where failure or malfunction of an AWINIC Technology product can reasonably be expected to result in personal injury, death or severe property or environmental damage. AWINIC Technology accepts no liability for inclusion and/or use of AWINIC Technology products in such equipment or applications and therefore such inclusion and/or use is at the customer's own risk.

Applications that are described herein for any of these products are for illustrative purposes only. AWINIC Technology makes no representation or warranty that such applications will be suitable for the specified use without further testing or modification.

All products are sold subject to the general terms and conditions of commercial sale supplied at the time of order acknowledgement.

Nothing in this document may be interpreted or construed as an offer to sell products that is open for acceptance or the grant, conveyance or implication of any license under any copyrights, patents or other industrial or intellectual property rights.

Reproduction of AWINIC information in AWINIC data books or data sheets is permissible only if reproduction is without alteration and is accompanied by all associated warranties, conditions, limitations, and notices. AWINIC is not responsible or liable for such altered documentation. Information of third parties may be subject to additional restrictions.

Resale of AWINIC components or services with statements different from or beyond the parameters stated by AWINIC for that component or service voids all express and any implied warranties for the associated AWINIC component or service and is an unfair and deceptive business practice. AWINIC is not responsible or liable for any such statements.