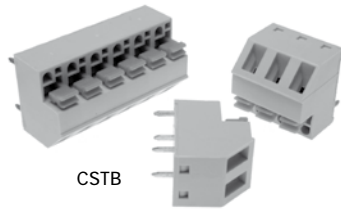


5.08mm Pitch Screwless

- 2-7 pole solid block
- Screwless
- Moulded in grey
UL94-V0 flame retardant PA
- 0.3 to 1.5mm² cable entry
- CE, RoHS, REACH, approved

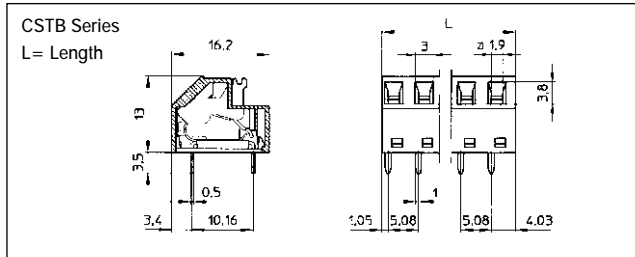


CSTB

Type No.	Poles	Length	Type No.	Poles	Length
CSTB/2	2	10.16mm	CSTB/5	5	25.40mm
CSTB/3	3	15.24mm	CSTB/6	6	30.48mm
CSTB/4	4	20.32mm	CSTB/7	7	35.56mm

Specification

Rating	10A/250V
Dielectric strength	≥4kV
Impulse withstand voltage	6kV
Working temperature	110°C
Moulding	UL94-V0 flame retardant PA
Pin/terminal	Tinned, phosphor bronze
Spring	Zinc plated steel
Recommended PCB hole size	ø1.1mm



5, 5.08, 7.5, 7.62 & 10, 10.16mm Pitch Screwless

- Another unique 36 pole strip 5, 5.8mm pitch
- 1-36 poles
5, 5.8mm pitch
- 1-24 poles
7.5, 7.62mm pitch
- 1-18 poles
10, 10.16mm pitch
- Screwless
- Easily breakable to desired number of poles
- Moulded in grey
UL94-V0 flame retardant PA
- 0.3-1.5mm² cable entry
- CE, RoHS, REACH, approved
- Guided pin alignment
- Anti solder wicking
- Spacers in 2.5, 2.54, 5 & 5.08mm available
- Full customisation, produced from 1 pole units which can be pre-assembled to individual requirements
- Available without actuators (screwdriver operation) add suffix /W

Specification

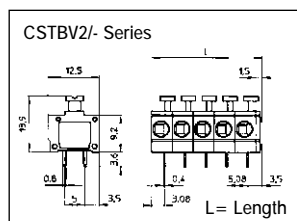
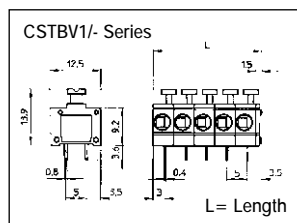
	5/5.08	7.5/7.62/10/10.16
Rating	10A@250V UL = 10A, CUL = 10A, IMQ = 10A, VDE = 10A	10A@750V
Dielectric strength	≥2.5kV	≥3kV
Impulse withstand voltage		6kV
Working temperature		110°C
Moulding	UL94-V0 flame retardant PA	
Pin/terminal	Tinned, phosphor bronze	
Spring	Zinc plated steel	
Recommended PCB hole size	ø1.1mm	

5, 5.08mm Pitch

CSTBV1/- Series



CSTBV2/- Series



5mm Pitch	Poles	Length
CSTBV1/1	1	6.50mm
CSTBV1/2	2	11.50mm
CSTBV1/3	3	16.50mm
CSTBV1/4	4	21.50mm
CSTBV1/5	5	26.50mm
CSTBV1/6	6	31.50mm
CSTBV1/7	7	36.50mm
CSTBV1/8	8	41.50mm
CSTBV1/9	9	46.50mm
CSTBV1/10	10	51.50mm
CSTBV1/11	11	56.50mm
CSTBV1/12	12	61.50mm
CSTBV1/36	36	181.50mm

5.08mm Pitch	Poles	Length
CSTBV2/1	1	6.58mm
CSTBV2/2	2	11.66mm
CSTBV2/3	3	16.74mm
CSTBV2/4	4	21.82mm
CSTBV2/5	5	26.90mm
CSTBV2/6	6	31.98mm
CSTBV2/7	7	37.06mm
CSTBV2/8	8	42.14mm
CSTBV2/9	9	47.22mm
CSTBV2/10	10	52.30mm
CSTBV2/11	11	57.38mm
CSTBV2/12	12	62.46mm
CSTBV2/36	36	184.38mm

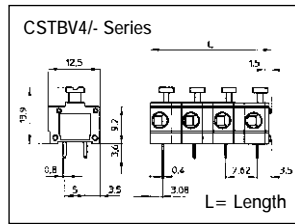
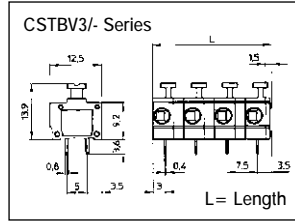
5, 5.08, 7.5, 7.62 & 10, 10.16mm Pitch Screwless

7.5, 7.62mm Pitch

CSTBV3/- Series



CSTBV4/- Series



7.5mm Pitch		
Type No.	Poles	Length
CSTBV3/2	2	14.00mm
CSTBV3/3	3	21.50mm
CSTBV3/4	4	29.00mm
CSTBV3/5	5	36.50mm
CSTBV3/6	6	44.00mm
CSTBV3/7	7	51.50mm
CSTBV3/8	8	59.00mm
CSTBV3/9	9	66.50mm
CSTBV3/10	10	74.00mm
CSTBV3/11	11	81.50mm
CSTBV3/12	12	89.00mm
CSTBV3/24	24	179.00mm

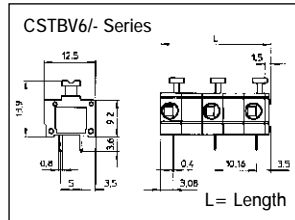
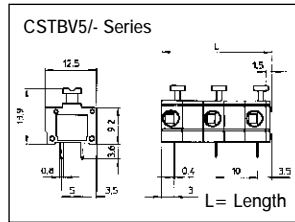
7.62mm Pitch		
Type No.	Poles	Length
CSTBV4/2	2	14.20mm
CSTBV4/3	3	21.82mm
CSTBV4/4	4	29.46mm
CSTBV4/5	5	37.06mm
CSTBV4/6	6	44.68mm
CSTBV4/7	7	52.30mm
CSTBV4/8	8	59.92mm
CSTBV4/9	9	67.54mm
CSTBV4/10	10	75.16mm
CSTBV4/11	11	82.78mm
CSTBV4/12	12	90.40mm
CSTBV4/24	24	181.84mm

10, 10.16mm Pitch

CSTBV5/- Series



CSTBV6/- Series



10mm Pitch		
Type No.	Poles	Length
CSTBV5/2	2	16.50mm
CSTBV5/3	3	26.50mm
CSTBV5/4	4	36.50mm
CSTBV5/5	5	46.50mm
CSTBV5/6	6	56.50mm
CSTBV5/12	12	116.50mm
CSTBV5/18	18	176.50mm

10.16mm Pitch		
Type No.	Poles	Length
CSTBV6/2	2	16.74mm
CSTBV6/3	3	26.90mm
CSTBV6/4	4	37.06mm
CSTBV6/5	5	47.22mm
CSTBV6/6	6	57.38mm
CSTBV6/12	12	118.34mm
CSTBV6/18	18	179.30mm

How to Calculate Lengths		
CSTBV1/-	5mm Pitch	No. Poles Multiply by 5mm + 1.5mm
CSTBV2/-	5.08mm Pitch	No. Poles Multiply by 5.08mm + 1.5mm
CSTBV3/-	7.5mm Pitch	No. Poles Multiply by 7.5mm - 1mm
CSTBV4/-	7.62mm Pitch	No. Poles Multiply by 7.62mm - 1.04mm
CSTBV5/-	10mm Pitch	No. Poles Multiply by 10mm - 3.5mm
CSTBV6/-	10.16mm Pitch	No. Poles Multiply by 10mm - 3.58mm