



AiP74AUP1T34

Low Power Dual Supply Translating Buffer

Product Specification

Specification Revision History:

Version	Date	Description
2021-09-A1	2021-09	New



Contents

1、 General Description.....	1
2、 Block Diagram And Pin Description	2
2.1、 Block Diagram	2
2.2、 Pin Configurations.....	2
2.3、 Pin Description.....	2
3、 Electrical Parameter	3
3.1、 Absolute Maximum Ratings.....	3
3.3、 Electrical Characteristics	4
3.3.1、 DC Characteristics 1	4
3.3.2、 DC Characteristics 2.....	5
3.3.3、 DC Characteristics 3	7
3.3.4、 AC Characteristics 1	8
3.3.5、 AC Characteristics 2.....	11
4、 Testing Circuit	14
4.1、 AC Testing Circuit	14
4.2、 AC Testing Waveforms.....	14
5、 Package Information	15
5.1、 SOT23-5.....	15
5.2、 SOT353	16
6、 Statements And Notes	17
6.1、 The name and content of Hazardous substances or Elements in the product.....	17
6.2、 Notes	17



1、 General Description

The AiP74AUP1T34 provides a single buffer with two separate supply voltages. Input A is designed to track $V_{CC(A)}$. Output Y is designed to track $V_{CC(Y)}$. Both, $V_{CC(A)}$ and $V_{CC(Y)}$ accepts any supply voltage from 1.1V to 3.6V. This feature allows universal low voltage interfacing between any of the 1.2V, 1.5V, 1.8V, 2.5V and 3.3V voltage nodes.

Features:

- Wide supply voltage range:
 $V_{CC(A)}$: 1.1V to 3.6V
 $V_{CC(Y)}$: 1.1V to 3.6V
- Low static power consumption; $I_{CC}=1\mu A$ (maximum)
- Inputs accept voltages up to 3.6V
- I_{OFF} circuitry provides partial Power-down mode operation
- Specified from $-40^{\circ}C$ to $+125^{\circ}C$
- Packaging information: SOT23-5/SOT353

Ordering Information:

Reel packing specifications:

Part number	Packaging form	Marking code	Reel quantity	Boxed reel quantity	Notes
AiP74AUP1T34GB235.TR	SOT23-5	DIXX	3000PCS/reel	30000PCS/box	Dimensions of plastic enclosure: 2.9mm×1.6mm Pin spacing: 0.95mm
AiP74AUP1T34GC353.TR	SOT353	DIXX	3000PCS/reel	30000PCS/box	Dimensions of plastic enclosure: 2.1mm×1.3mm Pin spacing: 0.65mm

Note 1: "XX" refers to variable content, meaning year and package batch serial number.

Note 2: If the physical information is inconsistent with the ordering information, please refer to the actual product.



2、Block Diagram And Pin Description

2.1、Block Diagram

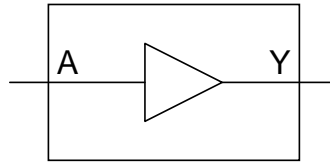


Figure 1. Logic symbol

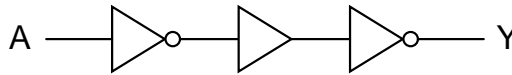


Figure 2. Logic diagram

2.2、Pin Configurations

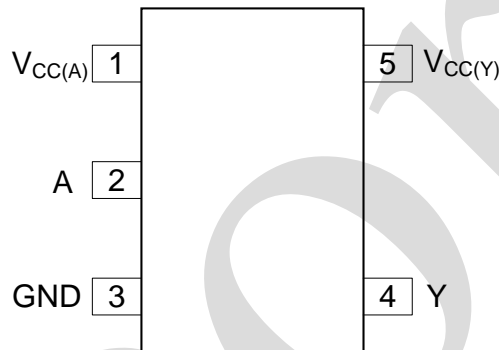


Figure 3. Pin Configuration

2.3、Pin Description

Pin No.	Pin Name	Description
1	$V_{CC(A)}$	supply voltage A
2	A	data input
3	GND	ground (0V)
4	Y	data output
5	$V_{CC(Y)}$	supply voltage Y



2.4、Function Table

Input	Output
A	Y
L	L
H	H

Note: H=HIGH voltage level; L=LOW voltage level.

3、Electrical Parameter

3.1、Absolute Maximum Ratings

($T_{amb}=25^{\circ}\text{C}$, voltages are referenced to GND (ground=0V), unless otherwise specified)

Characteristic	Symbol	Conditions	Min.	Max.	Unit
supply voltage A	$V_{CC(A)}$	-	-0.5	+4.6	V
supply voltage Y	$V_{CC(Y)}$	-	-0.5	+4.6	V
input clamping current	I_{IK}	$V_I < 0V$	-50	-	mA
input voltage	V_I	-	-0.5	+4.6	V
output clamping current	I_{OK}	$V_O < 0V$	-50	-	mA
output voltage	V_O	active mode and power-down mode	-0.5	+4.6	V
output current	I_O	$V_O=0V$ to $V_{CC(Y)}$	-	± 20	mA
supply current	I_{CC}	-	-	50	mA
ground current	I_{GND}	-	-50	-	mA
storage temperature	T_{stg}	-	-65	+150	$^{\circ}\text{C}$
total power dissipation	P_{tot}	-	-	250	mW
soldering temperature	T_L	-	260		$^{\circ}\text{C}$

3.2、Recommended Operating Conditions

Parameter	Symbol	Conditions	Min.	Typ.	Max.	Unit
supply voltage A	$V_{CC(A)}$	-	1.1	-	3.6	V
supply voltage Y	$V_{CC(Y)}$	-	1.1	-	3.6	V
input voltage	V_I	-	0	-	3.6	V
output voltage	V_O	-	0	-	$V_{CC(Y)}$	V
ambient temperature	T_{amb}	-	-40	-	+125	$^{\circ}\text{C}$



3.3、Electrical Characteristics

3.3.1、DC Characteristics 1

($T_{amb}=25^{\circ}C$, voltages are referenced to GND (ground=0V), unless otherwise specified)

Parameter	Symbol	Conditions	Min.	Typ.	Max.	Unit	
HIGH-level input voltage	V_{IH}	$V_{CC(A)}=1.1V$ to $1.95V$; $V_{CC(Y)}=1.1V$ to $3.6V$	$0.65 \times V_{CC(A)}$	-	-	V	
		$V_{CC(A)}=2.3V$ to $2.7V$; $V_{CC(Y)}=1.1V$ to $3.6V$	1.6	-	-	V	
		$V_{CC(A)}=3.0V$ to $3.6V$; $V_{CC(Y)}=1.1V$ to $3.6V$	2.0	-	-	V	
LOW-level input voltage	V_{IL}	$V_{CC(A)}=1.1V$ to $1.95V$; $V_{CC(Y)}=1.1V$ to $3.6V$	-	-	$0.35 \times V_{CC(A)}$	V	
		$V_{CC(A)}=2.3V$ to $2.7V$; $V_{CC(Y)}=1.1V$ to $3.6V$	-	-	0.7	V	
		$V_{CC(A)}=3.0V$ to $3.6V$; $V_{CC(Y)}=1.1V$ to $3.6V$	-	-	0.9	V	
HIGH -level output voltage	V_{OH}	$V_I=V_{IH}$	$I_O=-20\mu A$; $V_{CC(A)}=V_{CC(Y)}=1.1V$ to $3.6V$	$V_{CC(Y)}-0.1$	-	-	V
			$I_O=-1.1mA$; $V_{CC(A)}=V_{CC(Y)}=1.1V$	$0.75 \times V_{CC(Y)}$	-	-	V
			$I_O=-1.7mA$; $V_{CC(A)}=V_{CC(Y)}=1.4V$	1.11	-	-	V
			$I_O=-1.9mA$; $V_{CC(A)}=V_{CC(Y)}=1.65V$	1.32	-	-	V
			$I_O=-2.3mA$; $V_{CC(A)}=V_{CC(Y)}=2.3V$	2.05	-	-	V
			$I_O=-3.1mA$; $V_{CC(A)}=V_{CC(Y)}=2.3V$	1.9	-	-	V
			$I_O=-2.7mA$; $V_{CC(A)}=V_{CC(Y)}=3.0V$	2.72	-	-	V
			$I_O=-4.0mA$; $V_{CC(A)}=V_{CC(Y)}=3.0V$	2.6	-	-	V
LOW-level output voltage	V_{OL}	$V_I=V_{IL}$	$I_O=20\mu A$; $V_{CC(A)}=V_{CC(Y)}=1.1V$ to $3.6V$	-	-	0.1	V
			$I_O=1.1mA$; $V_{CC(A)}=V_{CC(Y)}=1.1V$	-	-	$0.3 \times V_{CC(Y)}$	V
			$I_O=1.7mA$; $V_{CC(A)}=V_{CC(Y)}=1.4V$	-	-	0.31	V
			$I_O=1.9mA$; $V_{CC(A)}=V_{CC(Y)}=1.65V$	-	-	0.31	V
			$I_O=2.3mA$; $V_{CC(A)}=V_{CC(Y)}=2.3V$	-	-	0.31	V
			$I_O=3.1mA$; $V_{CC(A)}=V_{CC(Y)}=2.3V$	-	-	0.44	V
			$I_O=2.7mA$; $V_{CC(A)}=V_{CC(Y)}=3.0V$	-	-	0.31	V



			$I_O=4.0\text{mA};$ $V_{CC(A)}=V_{CC(Y)}=3.0\text{V}$	-	-	0.44	V
input leakage current	I_I	$V_I=0\text{V to }3.6\text{V};$ $V_{CC(A)}=V_{CC(Y)}=1.1\text{V to }3.6\text{V}$		-	-	± 1	μA
power-off leakage current	I_{OFF}	A input; $V_I=0\text{V to }3.6\text{V}; V_{CC(A)}=0\text{V};$ $V_{CC(Y)}=0\text{V to }3.6\text{V}$		-	-	± 1	μA
		Y output; $V_O=0\text{V to }3.6\text{V}; V_I=0\text{V or }3.6\text{V};$ $V_{CC(Y)}=0\text{V}; V_{CC(A)}=0\text{V to }3.6\text{V}$		-	-	± 1	μA
additional power-off leakage current	ΔI_{OFF}	A input; $V_I=0\text{V to }3.6\text{V}; V_{CC(A)}=0\text{V to }0.2\text{V};$ $V_{CC(Y)}=0\text{V to }3.6\text{V}$		-	-	± 1	μA
		Y output; $V_O=0\text{V to }3.6\text{V};$ $V_I=0\text{V or }3.6\text{V}; V_{CC(Y)}=0\text{V to }0.2\text{V};$ $V_{CC(A)}=0\text{V to }3.6\text{V}$		-	-	± 1	μA
supply current	I_{CC}	port A; $V_I=\text{GND}$ or $V_{CC(A)}$; $I_O=0\text{A}$	$V_{CC(A)}=V_{CC(Y)}=1.1\text{V to }3.6\text{V}$	-	-	1	μA
			$V_{CC(A)}=3.6\text{V}; V_{CC(Y)}=0\text{V}$	-	-	1	μA
			$V_{CC(A)}=0\text{V}; V_{CC(Y)}=3.6\text{V}$	-	0.0	-	μA
		port Y; $V_I=\text{GND}$ or $V_{CC(A)}$; $I_O=0\text{A}$	$V_{CC(A)}=V_{CC(Y)}=1.1\text{V to }3.6\text{V}$	-	-	1	μA
			$V_{CC(A)}=3.6\text{V}; V_{CC(Y)}=0\text{V}$	-	0.0	-	μA
			$V_{CC(A)}=0\text{V}; V_{CC(Y)}=3.6\text{V}$	-	-	1	μA
additional supply current	ΔI_{CC}	A input; $V_{CC(A)}=3.3\text{V}; V_{CC(Y)}=0\text{V to }3.6\text{V};$ $V_I=V_{CC(A)}-0.6\text{V}$		-	-	40	μA
input capacitance	C_I	A input; $V_{CC(A)}=V_{CC(Y)}=0\text{V to }3.6\text{V};$ $V_I=\text{GND or }V_{CC(A)}$		-	1.0	-	pF
output capacitance	C_O	Y output; $V_O=\text{GND}; V_{CC(Y)}=0\text{V};$ $V_{CC(A)}=0\text{V to }3.6\text{V}$		-	1.8	-	pF

3.3.2、DC Characteristics 2

($T_{amb}=-40^\circ\text{C}$ to $+85^\circ\text{C}$, voltages are referenced to GND (ground=0V), unless otherwise specified)

Parameter	Symbol	Conditions	Min.	Typ.	Max.	Unit	
HIGH-level input voltage	V_{IH}	$V_{CC(A)}=1.1\text{V to }1.95\text{V};$ $V_{CC(Y)}=1.1\text{V to }3.6\text{V}$	$0.65 \times V_{CC(A)}$	-	-	V	
		$V_{CC(A)}=2.3\text{V to }2.7\text{V};$ $V_{CC(Y)}=1.1\text{V to }3.6\text{V}$	1.6	-	-	V	
		$V_{CC(A)}=3.0\text{V to }3.6\text{V};$ $V_{CC(Y)}=1.1\text{V to }3.6\text{V}$	2.0	-	-	V	
LOW-level input voltage	V_{IL}	$V_{CC(A)}=1.1\text{V to }1.95\text{V};$ $V_{CC(Y)}=1.1\text{V to }3.6\text{V}$	-	-	$0.35 \times V_{CC(A)}$	V	
		$V_{CC(A)}=2.3\text{V to }2.7\text{V};$ $V_{CC(Y)}=1.1\text{V to }3.6\text{V}$	-	-	0.7	V	
		$V_{CC(A)}=3.0\text{V to }3.6\text{V};$ $V_{CC(Y)}=1.1\text{V to }3.6\text{V}$	-	-	0.9	V	
HIGH -level output voltage	V_{OH}	$V_I=V_{IH}$	$I_O=-20\mu\text{A};$ $V_{CC(A)}=V_{CC(Y)}=1.1\text{V to }3.6\text{V}$	$V_{CC(Y)}-0.1$	-	-	V
			$I_O=-1.1\text{mA};$ $V_{CC(A)}=V_{CC(Y)}=1.1\text{V}$	$0.7 \times V_{CC(Y)}$	-	-	V



			$I_O = -1.7\text{mA};$ $V_{CC(A)} = V_{CC(Y)} = 1.4\text{V}$	1.03	-	-	V
			$I_O = -1.9\text{mA};$ $V_{CC(A)} = V_{CC(Y)} = 1.65\text{V}$	1.30	-	-	V
			$I_O = -2.3\text{mA};$ $V_{CC(A)} = V_{CC(Y)} = 2.3\text{V}$	1.97	-	-	V
			$I_O = -3.1\text{mA};$ $V_{CC(A)} = V_{CC(Y)} = 2.3\text{V}$	1.85	-	-	V
			$I_O = -2.7\text{mA};$ $V_{CC(A)} = V_{CC(Y)} = 3.0\text{V}$	2.67	-	-	V
			$I_O = -4.0\text{mA};$ $V_{CC(A)} = V_{CC(Y)} = 3.0\text{V}$	2.55	-	-	V
LOW-level output voltage	V_{OL}	$V_I = V_{IL}$	$I_O = 20\mu\text{A};$ $V_{CC(A)} = V_{CC(Y)} = 1.1\text{V to } 3.6\text{V}$	-	-	0.1	V
			$I_O = 1.1\text{mA};$ $V_{CC(A)} = V_{CC(Y)} = 1.1\text{V}$	-	-	$0.3 \times V_{CC(Y)}$	V
			$I_O = 1.7\text{mA};$ $V_{CC(A)} = V_{CC(Y)} = 1.4\text{V}$	-	-	0.37	V
			$I_O = 1.9\text{mA};$ $V_{CC(A)} = V_{CC(Y)} = 1.65\text{V}$	-	-	0.35	V
			$I_O = 2.3\text{mA};$ $V_{CC(A)} = V_{CC(Y)} = 2.3\text{V}$	-	-	0.33	V
			$I_O = 3.1\text{mA};$ $V_{CC(A)} = V_{CC(Y)} = 2.3\text{V}$	-	-	0.45	V
			$I_O = 2.7\text{mA};$ $V_{CC(A)} = V_{CC(Y)} = 3.0\text{V}$	-	-	0.33	V
			$I_O = 4.0\text{mA};$ $V_{CC(A)} = V_{CC(Y)} = 3.0\text{V}$	-	-	0.45	V
input leakage current	I_I	$V_I = 0\text{V to } 3.6\text{V};$ $V_{CC(A)} = V_{CC(Y)} = 1.1\text{V to } 3.6\text{V}$	-	-	± 1	μA	
power-off leakage current	I_{OFF}	A input; $V_I = 0\text{V to } 3.6\text{V}; V_{CC(A)} = 0\text{V};$ $V_{CC(Y)} = 0\text{V to } 3.6\text{V}$	-	-	± 1	μA	
		Y output; $V_O = 0\text{V to } 3.6\text{V}; V_I = 0\text{V or } 3.6\text{V};$ $V_{CC(Y)} = 0\text{V}; V_{CC(A)} = 0\text{V to } 3.6\text{V}$	-	-	± 1	μA	
additional power-off leakage current	ΔI_{OFF}	A input; $V_I = 0\text{V to } 3.6\text{V}; V_{CC(A)} = 0\text{V to } 0.2\text{V};$ $V_{CC(Y)} = 0\text{V to } 3.6\text{V}$	-	-	± 1	μA	
		Y output; $V_O = 0\text{V to } 3.6\text{V};$ $V_I = 0\text{V or } 3.6\text{V}; V_{CC(Y)} = 0\text{V to } 0.2\text{V};$ $V_{CC(A)} = 0\text{V to } 3.6\text{V}$	-	-	± 1	μA	
supply current	I_{CC}	port A; $V_I = \text{GND}$ or $V_{CC(A)}$; $I_O = 0\text{A}$	$V_{CC(A)} = V_{CC(Y)} = 1.1\text{V to } 3.6\text{V}$	-	-	1	μA
			$V_{CC(A)} = 3.6\text{V}; V_{CC(Y)} = 0\text{V}$	-	-	1	μA
			$V_{CC(A)} = 0\text{V}; V_{CC(Y)} = 3.6\text{V}$	-	0.0	-	μA
		port Y; $V_I = \text{GND}$ or $V_{CC(A)}$; $I_O = 0\text{A}$	$V_{CC(A)} = V_{CC(Y)} = 1.1\text{V to } 3.6\text{V}$	-	-	1	μA
			$V_{CC(A)} = 3.6\text{V}; V_{CC(Y)} = 0\text{V}$	-	0.0	-	μA
			$V_{CC(A)} = 0\text{V}; V_{CC(Y)} = 3.6\text{V}$	-	-	1	μA



additional supply current	ΔI_{CC}	A input; $V_{CC(A)}=3.3V$; $V_{CC(Y)}=0V$ to $3.6V$; $V_I=V_{CC(A)}-0.6V$	-	-	50	μA
---------------------------	-----------------	-----------------------------------------------------------------------------	---	---	----	---------

3.3.3、DC Characteristics 3

($T_{amb}=-40^{\circ}C$ to $+125^{\circ}C$, voltages are referenced to GND (ground=0V), unless otherwise specified)

Parameter	Symbol	Conditions	Min.	Typ.	Max.	Unit	
HIGH-level input voltage	V_{IH}	$V_{CC(A)}=1.1V$ to $1.95V$; $V_{CC(Y)}=1.1V$ to $3.6V$	$0.7 \times V_{CC(A)}$	-	-	V	
		$V_{CC(A)}=2.3V$ to $2.7V$; $V_{CC(Y)}=1.1V$ to $3.6V$	1.6	-	-	V	
		$V_{CC(A)}=3.0V$ to $3.6V$; $V_{CC(Y)}=1.1V$ to $3.6V$	2.0	-	-	V	
LOW-level input voltage	V_{IL}	$V_{CC(A)}=1.1V$ to $1.95V$; $V_{CC(Y)}=1.1V$ to $3.6V$	-	-	$0.3 \times V_{CC(A)}$	V	
		$V_{CC(A)}=2.3V$ to $2.7V$; $V_{CC(Y)}=1.1V$ to $3.6V$	-	-	0.7	V	
		$V_{CC(A)}=3.0V$ to $3.6V$; $V_{CC(Y)}=1.1V$ to $3.6V$	-	-	0.9	V	
HIGH -level output voltage	V_{OH}	$V_I=V_{IH}$	$I_O=-20\mu A$; $V_{CC(A)}=V_{CC(Y)}=1.1V$ to $3.6V$	$V_{CC(Y)}-0.11$	-	-	V
			$I_O=-1.1mA$; $V_{CC(A)}=V_{CC(Y)}=1.1V$	$0.6 \times V_{CC(Y)}$	-	-	V
			$I_O=-1.7mA$; $V_{CC(A)}=V_{CC(Y)}=1.4V$	0.93	-	-	V
			$I_O=-1.9mA$; $V_{CC(A)}=V_{CC(Y)}=1.65V$	1.17	-	-	V
			$I_O=-2.3mA$; $V_{CC(A)}=V_{CC(Y)}=2.3V$	1.77	-	-	V
			$I_O=-3.1mA$; $V_{CC(A)}=V_{CC(Y)}=2.3V$	1.67	-	-	V
			$I_O=-2.7mA$; $V_{CC(A)}=V_{CC(Y)}=3.0V$	2.40	-	-	V
			$I_O=-4.0mA$; $V_{CC(A)}=V_{CC(Y)}=3.0V$	2.30	-	-	V
LOW-level output voltage	V_{OL}	$V_I=V_{IL}$	$I_O=20\mu A$; $V_{CC(A)}=V_{CC(Y)}=1.1V$ to $3.6V$	-	-	0.11	V
			$I_O=1.1mA$; $V_{CC(A)}=V_{CC(Y)}=1.1V$	-	-	$0.33 \times V_{CC(Y)}$	V
			$I_O=1.7mA$; $V_{CC(A)}=V_{CC(Y)}=1.4V$	-	-	0.41	V
			$I_O=1.9mA$; $V_{CC(A)}=V_{CC(Y)}=1.65V$	-	-	0.39	V
			$I_O=2.3mA$; $V_{CC(A)}=V_{CC(Y)}=2.3V$	-	-	0.36	V
			$I_O=3.1mA$; $V_{CC(A)}=V_{CC(Y)}=2.3V$	-	-	0.50	V



			$I_o=2.7mA;$ $V_{CC(A)}=V_{CC(Y)}=3.0V$	-	-	0.36	V
			$I_o=4.0mA;$ $V_{CC(A)}=V_{CC(Y)}=3.0V$	-	-	0.50	V
input leakage current	I_I	$V_I=0V$ to 3.6V; $V_{CC(A)}=V_{CC(Y)}=1.1V$ to 3.6V		-	-	± 1	μA
power-off leakage current	I_{OFF}	A input; $V_I=0V$ to 3.6V; $V_{CC(A)}=0V$; $V_{CC(Y)}=0V$ to 3.6V		-	-	± 1	μA
		Y output; $V_o=0V$ to 3.6V; $V_I=0V$ or 3.6V; $V_{CC(Y)}=0V$; $V_{CC(A)}=0V$ to 3.6V		-	-	± 1	μA
additional power-off leakage current	ΔI_{OFF}	A input; $V_I=0V$ to 3.6V; $V_{CC(A)}=0V$ to 0.2V; $V_{CC(Y)}=0V$ to 3.6V		-	-	± 1	μA
		Y output; $V_o=0V$ to 3.6V; $V_I=0V$ or 3.6V; $V_{CC(Y)}=0V$ to 0.2V; $V_{CC(A)}=0V$ to 3.6V		-	-	± 1	μA
supply current	I_{CC}	port A; $V_I=GND$ or $V_{CC(A)}$; $I_o=0A$	$V_{CC(A)}=V_{CC(Y)}=1.1V$ to 3.6V	-	-	1	μA
			$V_{CC(A)}=3.6V$; $V_{CC(Y)}=0V$	-	-	1	μA
			$V_{CC(A)}=0V$; $V_{CC(Y)}=3.6V$	-	0.0	-	μA
		port Y; $V_I=GND$ or $V_{CC(A)}$; $I_o=0A$	$V_{CC(A)}=V_{CC(Y)}=1.1V$ to 3.6V	-	-	1	μA
			$V_{CC(A)}=3.6V$; $V_{CC(Y)}=0V$	-	0.0	-	μA
			$V_{CC(A)}=0V$; $V_{CC(Y)}=3.6V$	-	-	1	μA
additional supply current	ΔI_{CC}	A input; $V_{CC(A)}=3.3V$; $V_{CC(Y)}=0V$ to 3.6V; $V_I=V_{CC(A)}-0.6V$		-	-	75	μA

3.3.4、AC Characteristics 1

($T_{amb}=25^{\circ}C$, voltages are referenced to GND (ground=0V), unless otherwise specified)

Parameter	Symbol	Conditions	Min.	Typ. ^[1]	Max.	Unit	
propagation delay	t_{pd}	A to Y ^[2]	$C_L=5pF$; $V_{CC(A)}=1.1V$ to 1.3V				
			$V_{CC(Y)}=1.1V$ to 1.3V	2.6	9.8	25.4	ns
			$V_{CC(Y)}=1.4V$ to 1.6V	2.4	7.1	15.3	ns
			$V_{CC(Y)}=1.65V$ to 1.95V	2.1	6.0	12.7	ns
			$V_{CC(Y)}=2.3V$ to 2.7V	2.0	5.1	9.8	ns
			$V_{CC(Y)}=3.0V$ to 3.6V	2.1	4.7	8.8	ns
			$C_L=5pF$; $V_{CC(A)}=1.4V$ to 1.6V				
			$V_{CC(Y)}=1.1V$ to 1.3V	2.3	9.1	23.9	ns
			$V_{CC(Y)}=1.4V$ to 1.6V	2.1	6.4	13.6	ns
			$V_{CC(Y)}=1.65V$ to 1.95V	1.8	5.3	10.9	ns
			$V_{CC(Y)}=2.3V$ to 2.7V	1.7	4.3	7.8	ns
			$V_{CC(Y)}=3.0V$ to 3.6V	1.8	3.9	6.6	ns
			$C_L=5pF$; $V_{CC(A)}=1.65V$ to 1.95V				
			$V_{CC(Y)}=1.1V$ to 1.3V	2.2	8.8	23.2	ns
			$V_{CC(Y)}=1.4V$ to 1.6V	2.0	6.0	13.0	ns
			$V_{CC(Y)}=1.65V$ to 1.95V	1.8	4.9	10.3	ns
			$V_{CC(Y)}=2.3V$ to 2.7V	1.6	3.9	7.2	ns
			$V_{CC(Y)}=3.0V$ to 3.6V	1.7	3.5	5.9	ns



C _L =5pF; V _{CC(A)} =2.3V to 2.7V					
V _{CC(Y)} =1.1V to 1.3V	2.2	8.4	22.8	ns	
V _{CC(Y)} =1.4V to 1.6V	1.9	5.7	12.3	ns	
V _{CC(Y)} =1.65V to 1.95V	1.7	4.6	9.6	ns	
V _{CC(Y)} =2.3V to 2.7V	1.5	3.5	6.3	ns	
V _{CC(Y)} =3.0V to 3.6V	1.6	3.1	5.1	ns	
C _L =5pF; V _{CC(A)} =3.0V to 3.6V					
V _{CC(Y)} =1.1V to 1.3V	2.2	8.1	22.5	ns	
V _{CC(Y)} =1.4V to 1.6V	1.9	5.4	12.0	ns	
V _{CC(Y)} =1.65V to 1.95V	1.7	4.3	9.2	ns	
V _{CC(Y)} =2.3V to 2.7V	1.5	3.3	6.0	ns	
V _{CC(Y)} =3.0V to 3.6V	1.6	2.9	4.8	ns	
C _L =10pF; V _{CC(A)} =1.1V to 1.3V					
V _{CC(Y)} =1.1V to 1.3V	2.6	10.7	27.1	ns	
V _{CC(Y)} =1.4V to 1.6V	2.6	7.7	16.7	ns	
V _{CC(Y)} =1.65V to 1.95V	2.7	6.6	13.4	ns	
V _{CC(Y)} =2.3V to 2.7V	2.2	5.6	10.3	ns	
V _{CC(Y)} =3.0V to 3.6V	2.5	5.3	9.5	ns	
C _L =10pF; V _{CC(A)} =1.4V to 1.6V					
V _{CC(Y)} =1.1V to 1.3V	2.4	10.0	25.6	ns	
V _{CC(Y)} =1.4V to 1.6V	2.4	7.0	15.0	ns	
V _{CC(Y)} =1.65V to 1.95V	2.4	5.9	11.6	ns	
V _{CC(Y)} =2.3V to 2.7V	2.0	4.8	8.4	ns	
V _{CC(Y)} =3.0V to 3.6V	2.2	4.4	7.4	ns	
C _L =10pF; V _{CC(A)} =1.65V to 1.95V					
V _{CC(Y)} =1.1V to 1.3V	2.3	9.7	24.8	ns	
V _{CC(Y)} =1.4V to 1.6V	2.3	6.6	14.3	ns	
V _{CC(Y)} =1.65V to 1.95V	2.3	5.5	11.0	ns	
V _{CC(Y)} =2.3V to 2.7V	1.9	4.4	7.7	ns	
V _{CC(Y)} =3.0V to 3.6V	2.1	4.0	6.6	ns	
C _L =10pF; V _{CC(A)} =2.3V to 2.7V					
V _{CC(Y)} =1.1V to 1.3V	2.3	9.3	24.4	ns	
V _{CC(Y)} =1.4V to 1.6V	2.2	6.3	13.6	ns	
V _{CC(Y)} =1.65V to 1.95V	2.2	5.1	10.3	ns	
V _{CC(Y)} =2.3V to 2.7V	1.8	4.1	6.9	ns	
V _{CC(Y)} =3.0V to 3.6V	2.0	3.6	5.8	ns	
C _L =10pF; V _{CC(A)} =3.0V to 3.6V					
V _{CC(Y)} =1.1V to 1.3V	2.3	9.0	24.2	ns	
V _{CC(Y)} =1.4V to 1.6V	2.2	6.0	13.3	ns	
V _{CC(Y)} =1.65V to 1.95V	2.2	4.9	9.9	ns	
V _{CC(Y)} =2.3V to 2.7V	1.8	3.9	6.5	ns	
V _{CC(Y)} =3.0V to 3.6V	2.0	3.5	5.4	ns	
C _L =15pF; V _{CC(A)} =1.1V to 1.3V					
V _{CC(Y)} =1.1V to 1.3V	3.0	11.5	28.6	ns	
V _{CC(Y)} =1.4V to 1.6V	3.1	8.3	17.3	ns	
V _{CC(Y)} =1.65V to 1.95V	2.8	7.1	14.1	ns	
V _{CC(Y)} =2.3V to 2.7V	2.6	6.1	11.1	ns	



		$V_{CC(Y)}=3.0V$ to $3.6V$	2.9	5.7	9.9	ns
		$C_L=15pF$; $V_{CC(A)}=1.4V$ to $1.6V$				
		$V_{CC(Y)}=1.1V$ to $1.3V$	2.8	10.8	27.1	ns
		$V_{CC(Y)}=1.4V$ to $1.6V$	2.8	7.6	15.7	ns
		$V_{CC(Y)}=1.65V$ to $1.95V$	2.5	6.3	12.3	ns
		$V_{CC(Y)}=2.3V$ to $2.7V$	2.3	5.3	9.2	ns
		$V_{CC(Y)}=3.0V$ to $3.6V$	2.6	4.9	7.8	ns
		$C_L=15pF$; $V_{CC(A)}=1.65V$ to $1.95V$				
		$V_{CC(Y)}=1.1V$ to $1.3V$	2.7	10.5	26.4	ns
		$V_{CC(Y)}=1.4V$ to $1.6V$	2.7	7.2	15.0	ns
		$V_{CC(Y)}=1.65V$ to $1.95V$	2.4	6.0	11.7	ns
		$V_{CC(Y)}=2.3V$ to $2.7V$	2.2	4.9	8.5	ns
		$V_{CC(Y)}=3.0V$ to $3.6V$	2.5	4.5	7.1	ns
		$C_L=15pF$; $V_{CC(A)}=2.3V$ to $2.7V$				
		$V_{CC(Y)}=1.1V$ to $1.3V$	2.6	10.1	26.0	ns
		$V_{CC(Y)}=1.4V$ to $1.6V$	2.7	6.9	14.3	ns
		$V_{CC(Y)}=1.65V$ to $1.95V$	2.4	5.6	10.9	ns
		$V_{CC(Y)}=2.3V$ to $2.7V$	2.1	4.5	7.6	ns
		$V_{CC(Y)}=3.0V$ to $3.6V$	2.4	4.1	6.2	ns
		$C_L=15pF$; $V_{CC(A)}=3.0V$ to $3.6V$				
		$V_{CC(Y)}=1.1V$ to $1.3V$	2.6	9.8	25.7	ns
		$V_{CC(Y)}=1.4V$ to $1.6V$	2.7	6.6	14.0	ns
		$V_{CC(Y)}=1.65V$ to $1.95V$	2.4	5.4	10.5	ns
		$V_{CC(Y)}=2.3V$ to $2.7V$	2.1	4.3	7.3	ns
		$V_{CC(Y)}=3.0V$ to $3.6V$	2.4	3.9	5.9	ns
		$C_L=30pF$; $V_{CC(A)}=1.1V$ to $1.3V$				
		$V_{CC(Y)}=1.1V$ to $1.3V$	3.7	13.7	32.9	ns
		$V_{CC(Y)}=1.4V$ to $1.6V$	3.6	9.8	19.5	ns
		$V_{CC(Y)}=1.65V$ to $1.95V$	3.7	8.4	15.9	ns
		$V_{CC(Y)}=2.3V$ to $2.7V$	3.0	7.2	12.2	ns
		$V_{CC(Y)}=3.0V$ to $3.6V$	3.8	6.8	10.9	ns
		$C_L=30pF$; $V_{CC(A)}=1.4V$ to $1.6V$				
		$V_{CC(Y)}=1.1V$ to $1.3V$	3.5	13.1	31.5	ns
		$V_{CC(Y)}=1.4V$ to $1.6V$	3.3	9.1	17.8	ns
		$V_{CC(Y)}=1.65V$ to $1.95V$	3.4	7.6	14.2	ns
		$V_{CC(Y)}=2.3V$ to $2.7V$	2.8	6.4	10.3	ns
		$V_{CC(Y)}=3.0V$ to $3.6V$	3.5	5.9	8.9	ns
		$C_L=30pF$; $V_{CC(A)}=1.65V$ to $1.95V$				
		$V_{CC(Y)}=1.1V$ to $1.3V$	3.4	12.7	30.7	ns
		$V_{CC(Y)}=1.4V$ to $1.6V$	3.2	8.8	17.2	ns
		$V_{CC(Y)}=1.65V$ to $1.95V$	3.3	7.3	13.5	ns
		$V_{CC(Y)}=2.3V$ to $2.7V$	2.7	6.0	9.6	ns
		$V_{CC(Y)}=3.0V$ to $3.6V$	3.4	5.6	8.2	ns
		$C_L=30pF$; $V_{CC(A)}=2.3V$ to $2.7V$				
		$V_{CC(Y)}=1.1V$ to $1.3V$	3.3	12.4	30.3	ns
		$V_{CC(Y)}=1.4V$ to $1.6V$	3.2	8.4	16.5	ns
		$V_{CC(Y)}=1.65V$ to $1.95V$	3.2	6.9	12.8	ns



			$V_{CC(Y)}=2.3V$ to $2.7V$	2.6	5.6	8.8	ns
			$V_{CC(Y)}=3.0V$ to $3.6V$	3.3	5.2	7.3	ns
			$C_L=30pF$; $V_{CC(A)}=3.0V$ to $3.6V$				
			$V_{CC(Y)}=1.1V$ to $1.3V$	3.3	12.0	30.0	ns
			$V_{CC(Y)}=1.4V$ to $1.6V$	3.2	8.1	16.2	ns
			$V_{CC(Y)}=1.65V$ to $1.95V$	3.2	6.7	12.4	ns
			$V_{CC(Y)}=2.3V$ to $2.7V$	2.6	5.5	8.5	ns
			$V_{CC(Y)}=3.0V$ to $3.6V$	3.2	5.0	7.0	ns

Note:

[1] All typical values are measured at nominal V_{CC} .[2] t_{pd} is the same as t_{PLH} and t_{PHL} .

3.3.5、AC Characteristics 2

(T_{amb}=-40°C to +125°C, voltages are referenced to GND (ground=0V), unless otherwise specified)

Parameter	Symbol	Conditions	Min.	Max. (85°C)	Max. (125°C)	Unit	
propagation delay	t_{pd}	A to Y ^[1]	$C_L=5pF$; $V_{CC(A)}=1.1V$ to $1.3V$				
			$V_{CC(Y)}=1.1V$ to $1.3V$	2.3	25.9	25.9	ns
			$V_{CC(Y)}=1.4V$ to $1.6V$	2.2	16.3	16.7	ns
			$V_{CC(Y)}=1.65V$ to $1.95V$	1.9	13.8	14.3	ns
			$V_{CC(Y)}=2.3V$ to $2.7V$	2.0	10.5	10.9	ns
			$V_{CC(Y)}=3.0V$ to $3.6V$	1.9	9.1	9.3	ns
			$C_L=5pF$; $V_{CC(A)}=1.4V$ to $1.6V$				
			$V_{CC(Y)}=1.1V$ to $1.3V$	2.0	24.5	24.5	ns
			$V_{CC(Y)}=1.4V$ to $1.6V$	1.9	14.7	15.2	ns
			$V_{CC(Y)}=1.65V$ to $1.95V$	1.6	12.1	12.6	ns
			$V_{CC(Y)}=2.3V$ to $2.7V$	1.6	8.7	9.2	ns
			$V_{CC(Y)}=3.0V$ to $3.6V$	1.6	7.1	7.5	ns
			$C_L=5pF$; $V_{CC(A)}=1.65V$ to $1.95V$				
			$V_{CC(Y)}=1.1V$ to $1.3V$	1.9	23.9	24.0	ns
			$V_{CC(Y)}=1.4V$ to $1.6V$	1.8	14.1	14.6	ns
			$V_{CC(Y)}=1.65V$ to $1.95V$	1.8	11.4	12.0	ns
			$V_{CC(Y)}=2.3V$ to $2.7V$	1.5	8.0	8.5	ns
			$V_{CC(Y)}=3.0V$ to $3.6V$	1.5	6.4	6.8	ns
			$C_L=5pF$; $V_{CC(A)}=2.3V$ to $2.7V$				
			$V_{CC(Y)}=1.1V$ to $1.3V$	1.9	23.4	23.4	ns
			$V_{CC(Y)}=1.4V$ to $1.6V$	1.8	13.4	14.0	ns
			$V_{CC(Y)}=1.65V$ to $1.95V$	1.5	10.7	11.2	ns
			$V_{CC(Y)}=2.3V$ to $2.7V$	1.5	7.2	7.7	ns
			$V_{CC(Y)}=3.0V$ to $3.6V$	1.4	5.6	6.0	ns
			$C_L=5pF$; $V_{CC(A)}=3.0V$ to $3.6V$				
			$V_{CC(Y)}=1.1V$ to $1.3V$	1.9	22.9	22.9	ns
			$V_{CC(Y)}=1.4V$ to $1.6V$	1.8	12.9	13.4	ns
			$V_{CC(Y)}=1.65V$ to $1.95V$	1.5	10.2	10.7	ns
			$V_{CC(Y)}=2.3V$ to $2.7V$	1.5	6.7	7.2	ns
			$V_{CC(Y)}=3.0V$ to $3.6V$	1.4	5.2	5.5	ns



$C_L=10\text{pF}; V_{CC(A)}=1.1\text{V to }1.3\text{V}$					
$V_{CC(Y)}=1.1\text{V to }1.3\text{V}$	2.5	27.6	27.6	ns	
$V_{CC(Y)}=1.4\text{V to }1.6\text{V}$	2.3	17.5	17.6	ns	
$V_{CC(Y)}=1.65\text{V to }1.95\text{V}$	2.4	14.2	14.7	ns	
$V_{CC(Y)}=2.3\text{V to }2.7\text{V}$	2.2	11.0	11.4	ns	
$V_{CC(Y)}=3.0\text{V to }3.6\text{V}$	2.2	9.7	10.0	ns	
$C_L=10\text{pF}; V_{CC(A)}=1.4\text{V to }1.6\text{V}$					
$V_{CC(Y)}=1.1\text{V to }1.3\text{V}$	2.2	26.1	26.1	ns	
$V_{CC(Y)}=1.4\text{V to }1.6\text{V}$	2.0	15.8	16.4	ns	
$V_{CC(Y)}=1.65\text{V to }1.95\text{V}$	2.1	12.5	13.1	ns	
$V_{CC(Y)}=2.3\text{V to }2.7\text{V}$	1.9	9.2	9.7	ns	
$V_{CC(Y)}=3.0\text{V to }3.6\text{V}$	1.9	7.7	8.1	ns	
$C_L=10\text{pF}; V_{CC(A)}=1.65\text{V to }1.95\text{V}$					
$V_{CC(Y)}=1.1\text{V to }1.3\text{V}$	2.1	26.1	26.1	ns	
$V_{CC(Y)}=1.4\text{V to }1.6\text{V}$	2.0	15.8	16.4	ns	
$V_{CC(Y)}=1.65\text{V to }1.95\text{V}$	2.0	12.5	13.1	ns	
$V_{CC(Y)}=2.3\text{V to }2.7\text{V}$	1.8	9.2	9.7	ns	
$V_{CC(Y)}=3.0\text{V to }3.6\text{V}$	1.8	7.1	8.1	ns	
$C_L=10\text{pF}; V_{CC(A)}=2.3\text{V to }2.7\text{V}$					
$V_{CC(Y)}=1.1\text{V to }1.3\text{V}$	2.1	25.1	25.1	ns	
$V_{CC(Y)}=1.4\text{V to }1.6\text{V}$	1.9	14.6	15.1	ns	
$V_{CC(Y)}=1.65\text{V to }1.95\text{V}$	2.0	11.2	11.7	ns	
$V_{CC(Y)}=2.3\text{V to }2.7\text{V}$	1.8	7.7	8.2	ns	
$V_{CC(Y)}=3.0\text{V to }3.6\text{V}$	1.7	6.3	6.6	ns	
$C_L=10\text{pF}; V_{CC(A)}=3.0\text{V to }3.6\text{V}$					
$V_{CC(Y)}=1.1\text{V to }1.3\text{V}$	2.1	24.6	24.6	ns	
$V_{CC(Y)}=1.4\text{V to }1.6\text{V}$	1.9	14.1	14.6	ns	
$V_{CC(Y)}=1.65\text{V to }1.95\text{V}$	2.0	10.6	11.2	ns	
$V_{CC(Y)}=2.3\text{V to }2.7\text{V}$	1.8	7.3	7.7	ns	
$V_{CC(Y)}=3.0\text{V to }3.6\text{V}$	1.7	5.8	6.2	ns	
$C_L=15\text{pF}; V_{CC(A)}=1.1\text{V to }1.3\text{V}$					
$V_{CC(Y)}=1.1\text{V to }1.3\text{V}$	2.8	29.2	29.2	ns	
$V_{CC(Y)}=1.4\text{V to }1.6\text{V}$	2.7	18.6	19.1	ns	
$V_{CC(Y)}=1.65\text{V to }1.95\text{V}$	2.7	15.2	15.8	ns	
$V_{CC(Y)}=2.3\text{V to }2.7\text{V}$	2.7	11.6	12.1	ns	
$V_{CC(Y)}=3.0\text{V to }3.6\text{V}$	2.6	10.3	10.6	ns	
$C_L=15\text{pF}; V_{CC(A)}=1.4\text{V to }1.6\text{V}$					
$V_{CC(Y)}=1.1\text{V to }1.3\text{V}$	2.6	27.7	27.7	ns	
$V_{CC(Y)}=1.4\text{V to }1.6\text{V}$	2.4	17.0	17.6	ns	
$V_{CC(Y)}=1.65\text{V to }1.95\text{V}$	2.4	13.5	14.1	ns	
$V_{CC(Y)}=2.3\text{V to }2.7\text{V}$	2.4	9.9	10.3	ns	
$V_{CC(Y)}=3.0\text{V to }3.6\text{V}$	2.3	8.3	8.7	ns	
$C_L=15\text{pF}; V_{CC(A)}=1.65\text{V to }1.95\text{V}$					
$V_{CC(Y)}=1.1\text{V to }1.3\text{V}$	2.5	27.1	27.3	ns	
$V_{CC(Y)}=1.4\text{V to }1.6\text{V}$	2.3	16.4	17.0	ns	
$V_{CC(Y)}=1.65\text{V to }1.95\text{V}$	2.3	12.8	13.5	ns	
$V_{CC(Y)}=2.3\text{V to }2.7\text{V}$	2.2	9.2	9.7	ns	



		$V_{CC(Y)}=3.0V$ to $3.6V$	2.2	7.7	8.0	ns
$C_L=15pF$; $V_{CC(A)}=2.3V$ to $2.7V$						
		$V_{CC(Y)}=1.1V$ to $1.3V$	2.4	26.7	26.7	ns
		$V_{CC(Y)}=1.4V$ to $1.6V$	2.3	15.7	16.3	ns
		$V_{CC(Y)}=1.65V$ to $1.95V$	2.3	12.1	12.7	ns
		$V_{CC(Y)}=2.3V$ to $2.7V$	2.2	8.4	8.9	ns
		$V_{CC(Y)}=3.0V$ to $3.6V$	2.1	6.8	7.2	ns
$C_L=15pF$; $V_{CC(A)}=3.0V$ to $3.6V$						
		$V_{CC(Y)}=1.1V$ to $1.3V$	2.4	26.2	26.2	ns
		$V_{CC(Y)}=1.4V$ to $1.6V$	2.3	15.2	15.7	ns
		$V_{CC(Y)}=1.65V$ to $1.95V$	2.2	11.6	12.1	ns
		$V_{CC(Y)}=2.3V$ to $2.7V$	2.2	7.9	8.4	ns
		$V_{CC(Y)}=3.0V$ to $3.6V$	2.1	6.4	6.8	ns
$C_L=30pF$; $V_{CC(A)}=1.1V$ to $1.3V$						
		$V_{CC(Y)}=1.1V$ to $1.3V$	3.5	33.5	33.5	ns
		$V_{CC(Y)}=1.4V$ to $1.6V$	3.6	20.9	21.4	ns
		$V_{CC(Y)}=1.65V$ to $1.95V$	3.5	17.0	17.1	ns
		$V_{CC(Y)}=2.3V$ to $2.7V$	3.4	12.7	13.2	ns
		$V_{CC(Y)}=3.0V$ to $3.6V$	3.4	12.2	12.5	ns
$C_L=30pF$; $V_{CC(A)}=1.4V$ to $1.6V$						
		$V_{CC(Y)}=1.1V$ to $1.3V$	3.2	32.0	32.0	ns
		$V_{CC(Y)}=1.4V$ to $1.6V$	3.3	19.2	19.9	ns
		$V_{CC(Y)}=1.65V$ to $1.95V$	3.2	15.4	16.0	ns
		$V_{CC(Y)}=2.3V$ to $2.7V$	3.1	11.0	11.5	ns
		$V_{CC(Y)}=3.0V$ to $3.6V$	3.1	10.1	10.5	ns
$C_L=30pF$; $V_{CC(A)}=1.65V$ to $1.95V$						
		$V_{CC(Y)}=1.1V$ to $1.3V$	3.1	31.5	31.5	ns
		$V_{CC(Y)}=1.4V$ to $1.6V$	3.2	18.7	19.3	ns
		$V_{CC(Y)}=1.65V$ to $1.95V$	3.1	14.7	15.4	ns
		$V_{CC(Y)}=2.3V$ to $2.7V$	3.0	10.4	10.9	ns
		$V_{CC(Y)}=3.0V$ to $3.6V$	2.9	9.4	9.8	ns
$C_L=30pF$; $V_{CC(A)}=2.3V$ to $2.7V$						
		$V_{CC(Y)}=1.1V$ to $1.3V$	3.1	31.0	31.0	ns
		$V_{CC(Y)}=1.4V$ to $1.6V$	3.1	18.0	18.7	ns
		$V_{CC(Y)}=1.65V$ to $1.95V$	3.0	14.0	14.6	ns
		$V_{CC(Y)}=2.3V$ to $2.7V$	2.9	9.6	10.1	ns
		$V_{CC(Y)}=3.0V$ to $3.6V$	2.9	8.5	9.0	ns
$C_L=30pF$; $V_{CC(A)}=3.0V$ to $3.6V$						
		$V_{CC(Y)}=1.1V$ to $1.3V$	3.1	30.5	30.5	ns
		$V_{CC(Y)}=1.4V$ to $1.6V$	3.1	17.5	18.1	ns
		$V_{CC(Y)}=1.65V$ to $1.95V$	3.0	13.4	14.1	ns
		$V_{CC(Y)}=2.3V$ to $2.7V$	2.9	9.1	9.6	ns
		$V_{CC(Y)}=3.0V$ to $3.6V$	2.9	8.1	8.5	ns

Note:

[1] t_{pd} is the same as t_{PLH} and t_{PHL} .



4、 Testing Circuit

4.1、 AC Testing Circuit

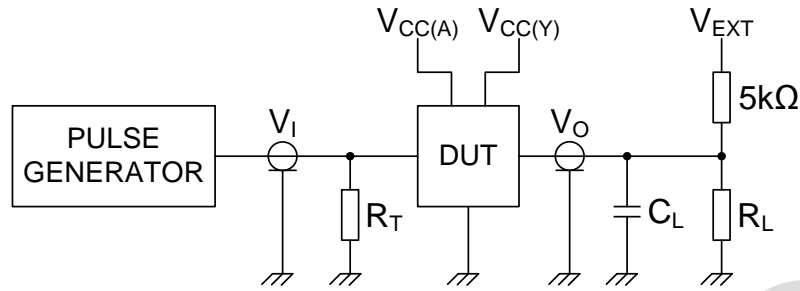


Figure 4. Test circuit for measuring switching times

Definitions for test circuit:

R_L =Load resistance.

C_L =Load capacitance including jig and probe capacitance.

R_T =Termination resistance should be equal to the output impedance Z_o of the pulse generator.

V_{EXT} =External voltage for measuring switching times.

4.2、 AC Testing Waveforms

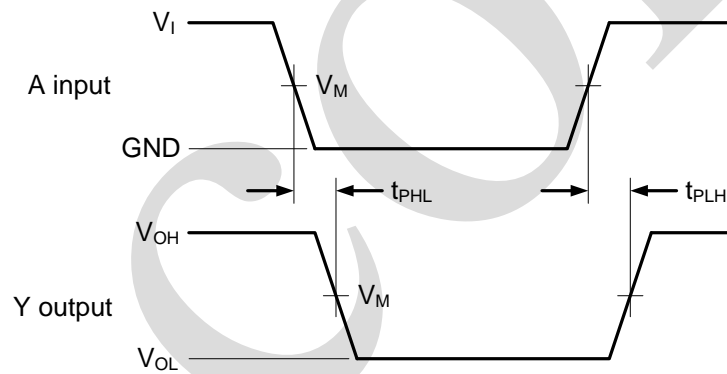


Figure 5. The data input (A) to output (Y) propagation delays

4.3、 Measurement Points

Supply voltage	Input	Output		
$V_{CC(A)}/V_{CC(Y)}$	V_M	V_M	V_I	$t_r=t_f$
1.1V to 3.6V	$0.5 \times V_{CC(Y)}$	$0.5 \times V_{CC(A)}$	$V_{CC(A)}$	$\leq 3.0\text{ns}$

4.4、 Test Data

Supply voltage	Load		V_{EXT}
V_{CC}	C_L	$R_L^{[1]}$	t_{PLH}, t_{PHL}
1.1V to 3.6V	5pF, 10pF, 15pF and 30pF	5kΩ or 1MΩ	open

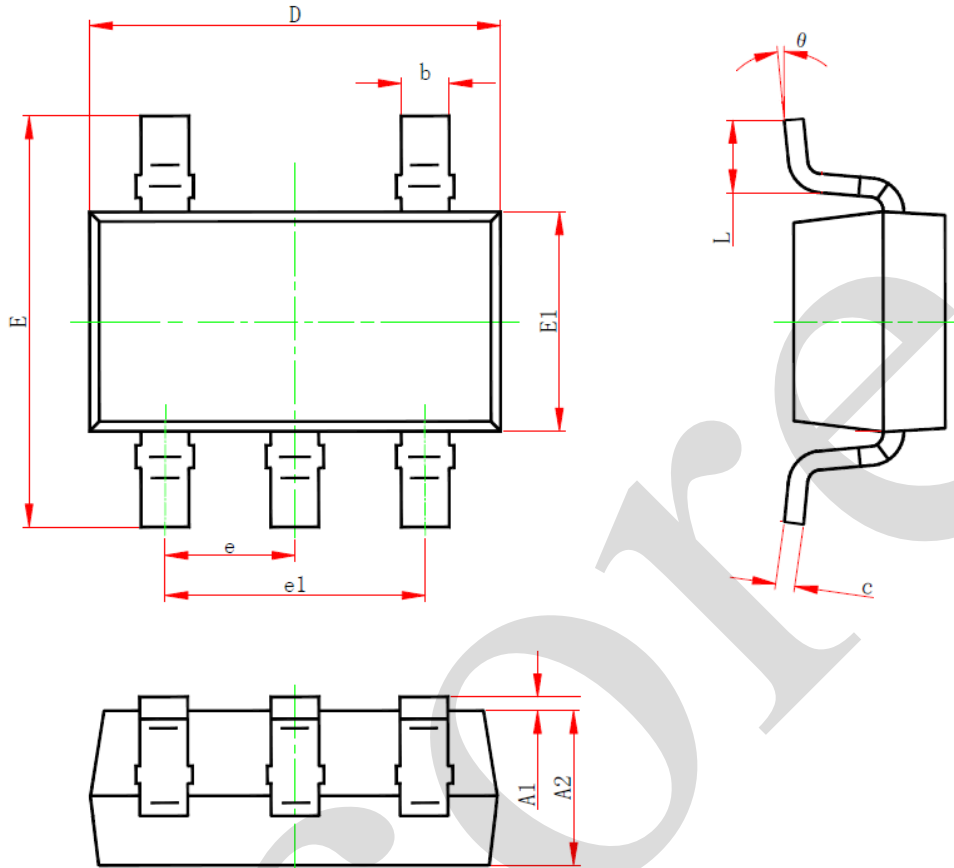
Note:

[1] For measuring enable and disable times $R_L=5\text{k}\Omega$, for measuring propagation delays, setup and hold times and pulse width $R_L=1\text{M}\Omega$.



5、Package Information

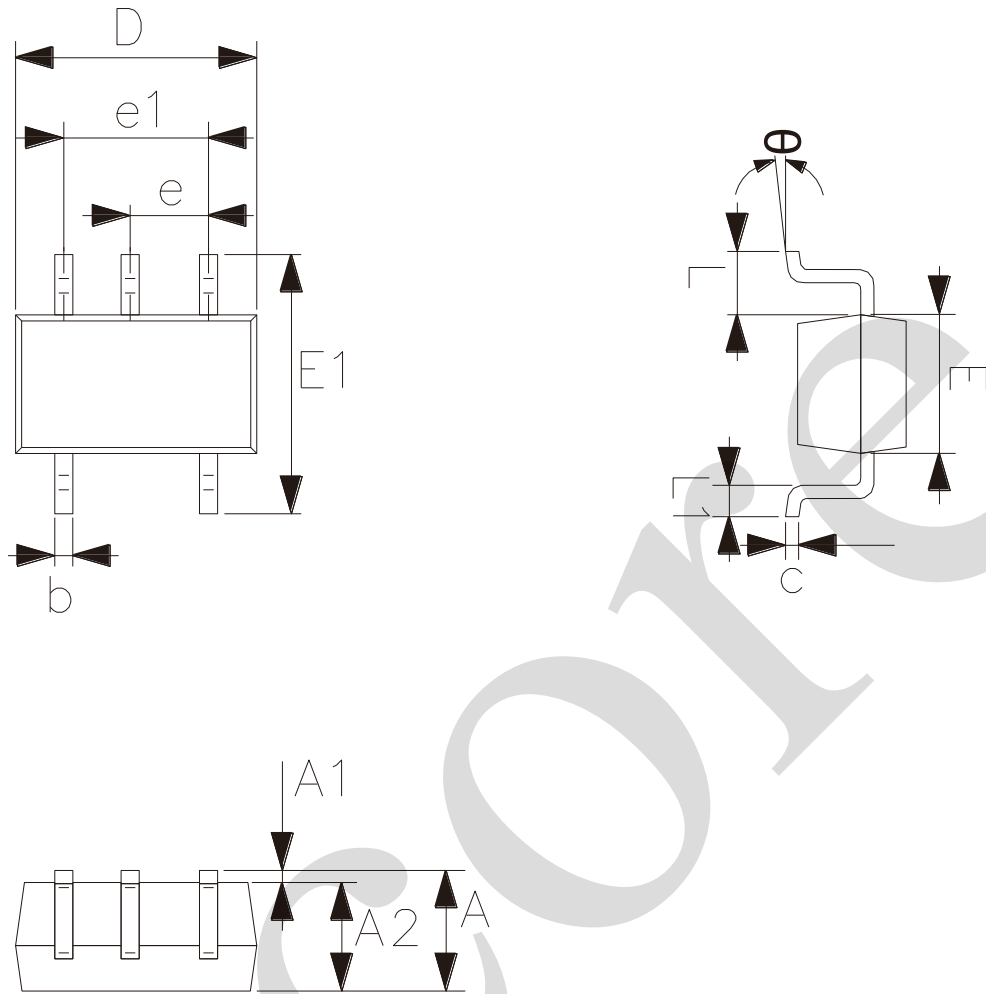
5.1、SOT23-5



Symbol	Dimensions (mm)	
	Min.	Max.
A	-	1.26
A1	0.00	0.12
A2	1.00	1.20
b	0.30	0.50
c	0.10	0.20
D	2.82	3.02
E	2.60	3.00
E1	1.50	1.70
e	0.95	
e1	1.80	2.00
L	0.30	0.60
θ	0°	8°



5.2、SOT353



Symbol	Dimensions (mm)	
	Min.	Max.
A	0.90	1.10
A1	0.00	0.10
A2	0.90	1.00
b	0.15	0.35
c	0.11	0.175
D	2.00	2.20
E	1.15	1.35
E1	2.15	2.45
e	0.65	
e1	1.20	1.40
L	0.525	
L1	0.26	0.46
θ	0°	8°



6、 Statements And Notes

6.1、 The name and content of Hazardous substances or Elements in the product

Part name	Hazardous substances or Elements									
	Lead and lead compounds	Mercury and mercury compounds	Cadmium and cadmium compounds	Hexavalent chromium compounds	Polybrominated biphenyls	Polybrominated biphenyl ethers	Dibutyl phthalate	Butylbenzyl phthalate	Di-2-ethylhexyl phthalate	Diisobutyl phthalate
Lead frame	○	○	○	○	○	○	○	○	○	○
Plastic resin	○	○	○	○	○	○	○	○	○	○
Chip	○	○	○	○	○	○	○	○	○	○
The lead	○	○	○	○	○	○	○	○	○	○
Plastic sheet installed	○	○	○	○	○	○	○	○	○	○
explanation	○: Indicates that the content of hazardous substances or elements in the detection limit of the following the SJ/T11363-2006 standard. ×: Indicates that the content of hazardous substances or elements exceeding the SJ/T11363-2006 Standard limit requirements.									

6.2、 Notes

We Recommend you to read this chapter carefully before using this product.

The information in this chapter is provided for reference only and i-Core disclaims any express or implied warranties, including but not limited to applicability, special application or non-infringement of third party rights.

This product is not suitable for critical equipment such as life-saving, life-sustaining or safety equipment. It is also not suitable for applications that may result in personal injury, death, or serious property or environmental damage due to product malfunction or failure. I-Core will not be liable for any damages incurred by the customers at their own risk for such applications.

The customer is responsible for conducting all necessary tests i-Core's application to avoid failure in the application or the application of the customer's third party users. I-Core does not accept any liability.

The Company reserves the right to change or improve the information published in this chapter at any time. The information in this chapter are subject to change without notice. We recommend the customer to consult our sales staff before purchasing.

Please obtain related materials form i-Core's regular channels and we are not responsible for its content if it is provided by sources other than our company.

In case of any conflict between the Chinese and English version, the version is subject to the Chinese one.