

HB-SQ-WWW

~90° beam. Assembly with installation tape.

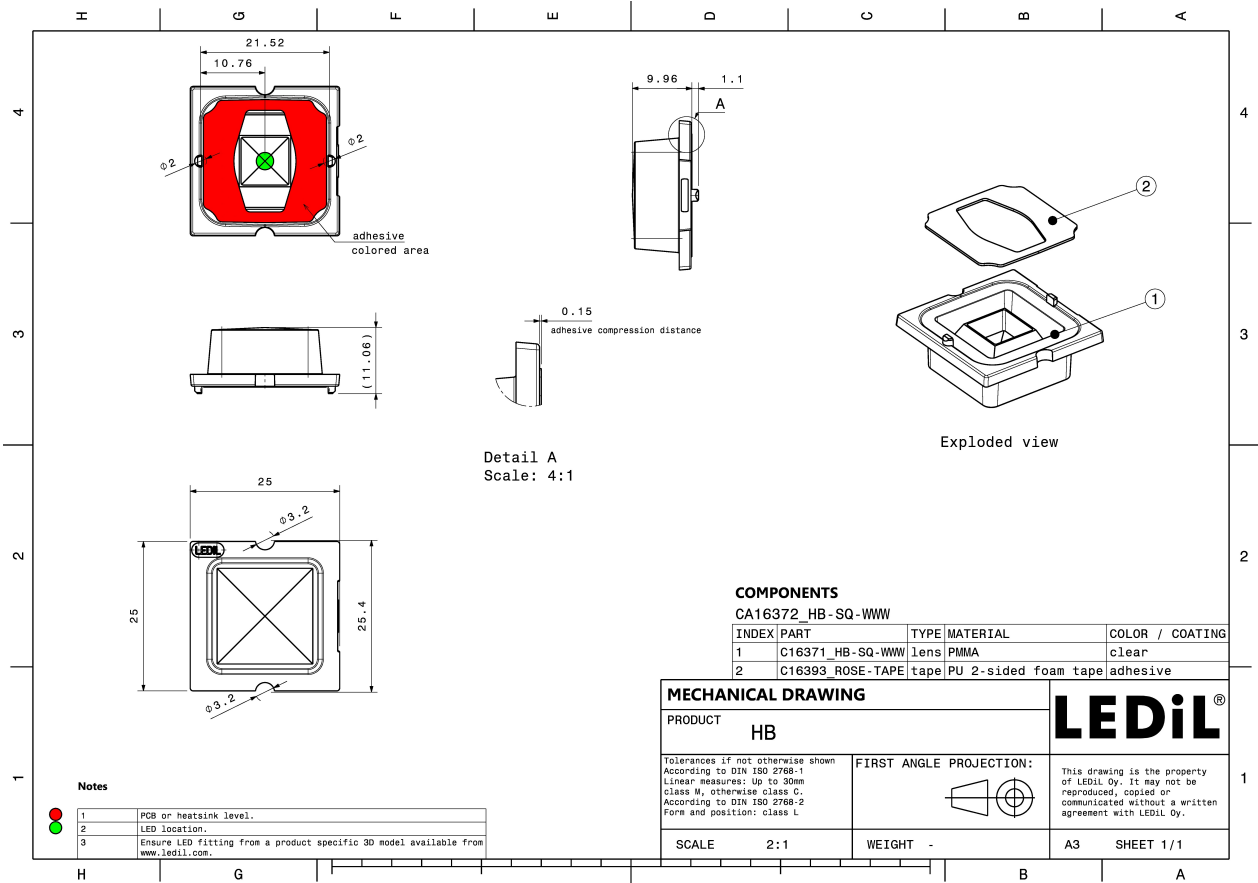
TECHNICAL SPECIFICATIONS:

Dimensions	25.0 mm
Height	10 mm
Fastening	tape, pin
Colour	clear
Box size	480 x 280 x 300 mm
Box weight	8.9 kg
Quantity in Box	2058 pcs
ROHS compliant	yes ⓘ



MATERIAL SPECIFICATIONS:

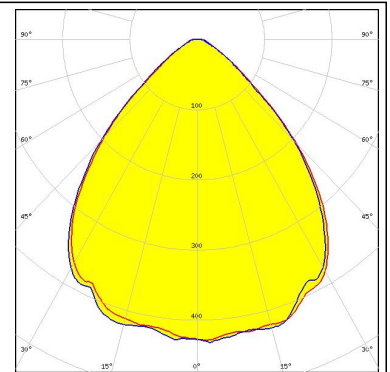
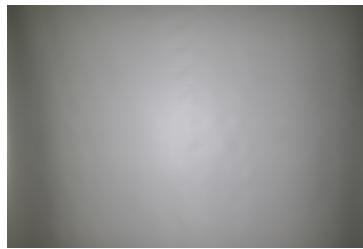
Component	Type	Material	Colour
HB-SQ-WWW	Single lens	PMMA	clear
ROSE-TAPE	Tape	PU tape	black



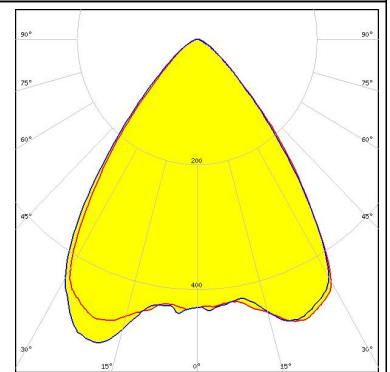
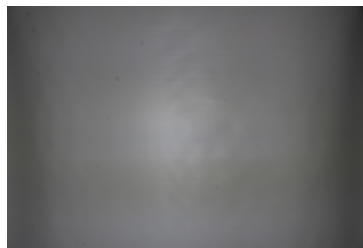
PHOTOMETRIC DATA (MEASURED):



LED XHP70
FWHM 88.0°
Efficiency 91 %
Peak intensity 0.430 cd/lm
LEDs/each optic 1
Light colour White
Required components:



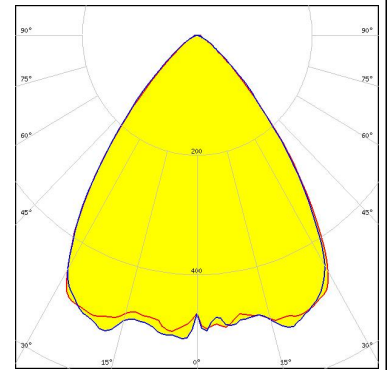
LED LUXEON 5050 Round LES
FWHM 80.0°
Efficiency 93 %
Peak intensity 0.540 cd/lm
LEDs/each optic 1
Light colour White
Required components:



PHOTOMETRIC DATA (SIMULATED):

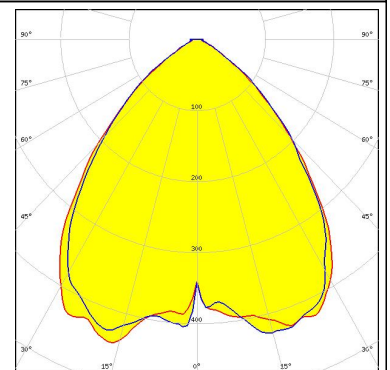
bridgelux

LED Bridgelux SMD 5050
FWHM 77.0°
Efficiency 93 %
Peak intensity 0.540 cd/lm
LEDs/each optic 1
Light colour White
Required components:



CREE ⇄

LED MHD-E/G
FWHM 85.5°
Efficiency 91 %
Peak intensity 0.450 cd/lm
LEDs/each optic 1
Light colour White
Required components:

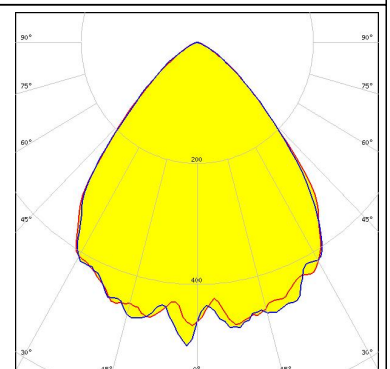


CREE ⇄

LED XHP50.2
FWHM 86.0°
Efficiency 93 %
Peak intensity 0.444 cd/lm
LEDs/each optic 1
Light colour White
Required components:

CREE ⇄

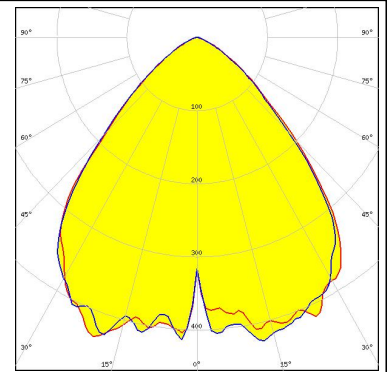
LED XHP70
FWHM 83.0°
Efficiency 89 %
Peak intensity 0.500 cd/lm
LEDs/each optic 1
Light colour White
Required components:



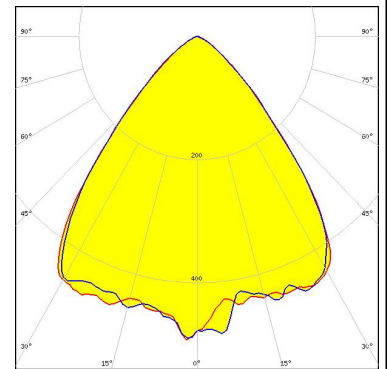
PHOTOMETRIC DATA (SIMULATED):



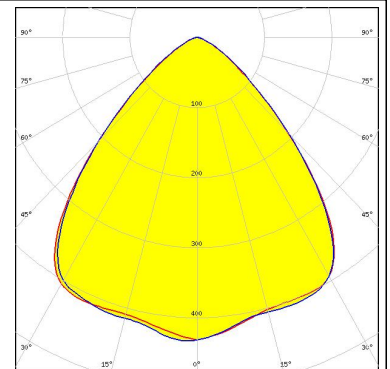
LED XHP70.2
 FWHM 85.0°
 Efficiency 86 %
 Peak intensity 0.440 cd/lm
 LEDs/each optic 1
 Light colour White
 Required components:



LED LUXEON M/MX
 FWHM 80.0°
 Efficiency 90 %
 Peak intensity 0.550 cd/lm
 LEDs/each optic 1
 Light colour White
 Required components:



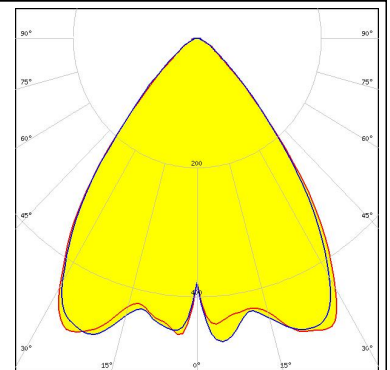
LED LUXEON M/MX
 FWHM 88.0°
 Efficiency 86 %
 Peak intensity 0.434 cd/lm
 LEDs/each optic 1
 Light colour White
 Required components:



Transparent protective cover



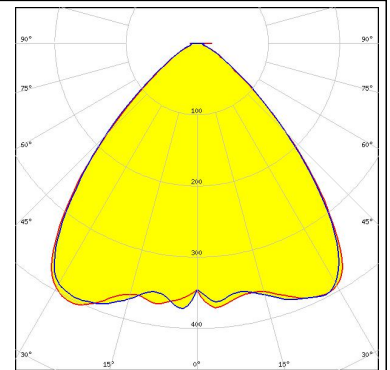
LED LUXEON MZ
 FWHM 77.0°
 Efficiency 94 %
 Peak intensity 0.600 cd/lm
 LEDs/each optic 1
 Light colour White
 Required components:



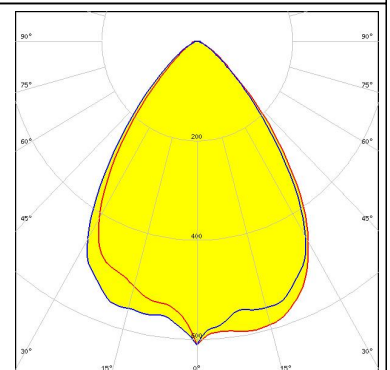
PHOTOMETRIC DATA (SIMULATED):



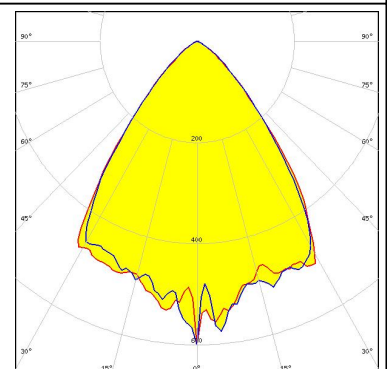
LED NV4x144A
FWHM 86.0°
Efficiency 90 %
Peak intensity 0.430 cd/lm
LEDs/each optic 1
Light colour White
Required components:



LED Duris S10
FWHM 74.0°
Efficiency 95 %
Peak intensity 0.610 cd/lm
LEDs/each optic 1
Light colour White
Required components:



LED OSCONIQ P 7070
FWHM 75.0°
Efficiency 91 %
Peak intensity 0.630 cd/lm
LEDs/each optic 1
Light colour White
Required components:



GENERAL INFORMATION:

NOTE: The typical beam angle will be changed by different color, chip size and chip position tolerance. The typical total beam angle is the full angle measured where the luminous intensity is half of the peak value.

MATERIALS:

As part of our continuous research and improvement processes, and to ensure the best possible quality and availability of our products, LEDiL reserves the right to change material grades without notice.

PRODUCT DATA USER AGREEMENT AND DISCLAIMER:

The measured data in the provided downloadable LEDiL Product Datasheets and Mechanical 2D-Drawings is rounded and provided as reference for planning. LEDiL Oy's optical specifications have been verified by conducting performance testing of the products in accordance with the company's quality system. The reported data are averaged results of multiple measurements with typical variation. LEDiL Oy reserves the right to without prior notification make changes and improvements to its products.

LEDiL Oy assumes neither warranty, nor guarantee nor any other liability of any kind for the contents and correctness of the provided data. The provided data has been generated with highest diligence but the provided data may in reality not represent the complete possible variation range of all intrinsic parameters. Therefore, in certain cases a deviation from the provided data could occur.

LEDiL Oy reserves the right to undertake technical changes of its products without further notification which could lead to changes in the provided data. LEDiL Oy assumes no liability of any kind for the possible deviation from any provided data or any other damage resulting from the usage of the provided data.

The user agrees to this disclaimer and user agreement with the download or usage of the provided files.

LEDiL Oy

Joensuunkatu 13
FI-24240 SALO
Finland

LEDiL Inc.

228 West Page Street
Suite D
Sycamore IL 60178
USA

Local sales and technical support

[www.ledil.com/
where_to_buy](http://www.ledil.com/where_to_buy)

Shipping locations

Salo, Finland
Hong Kong, China

Distribution Partners

[www.ledil.com/
where_to_buy](http://www.ledil.com/where_to_buy)