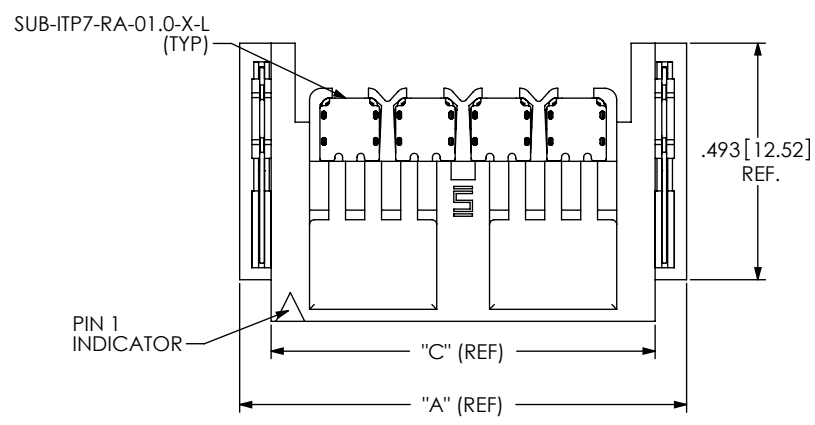


DO NOT SCALE FROM THIS PRINT



IP7-XX-01-X-X-RAX-X-TR

No. OF POSITIONS PER ROW
 *-01: 1 POSITION
 -02: 2 POSITIONS
 -04: 4 POSITIONS
 -06: 6 POSITIONS
 -08: 8 POSITIONS
 *-10: 10 POSITIONS

LEAD STYLE
 -01: SIGNAL TAIL: SMT SHIELDS & WT: THRU HOLE

PLATING OPTIONS
 -L: 10u" SELECTIVE GOLD ON CONTACTS MATTE TIN ON SIGNAL TAILS, SHIELDS & WELD TABS

PACKAGING
 -TR: TAPE AND REEL (SEE NOTE 3)

OPTIONS
A -L: CABLE LATCH

TAIL OPTIONS
 -RA1: .062" THICK BOARD
 *-RA2: .093" THICK BOARD

ROW
 -S: SINGLE ROW

(* = NOT TOOLED)

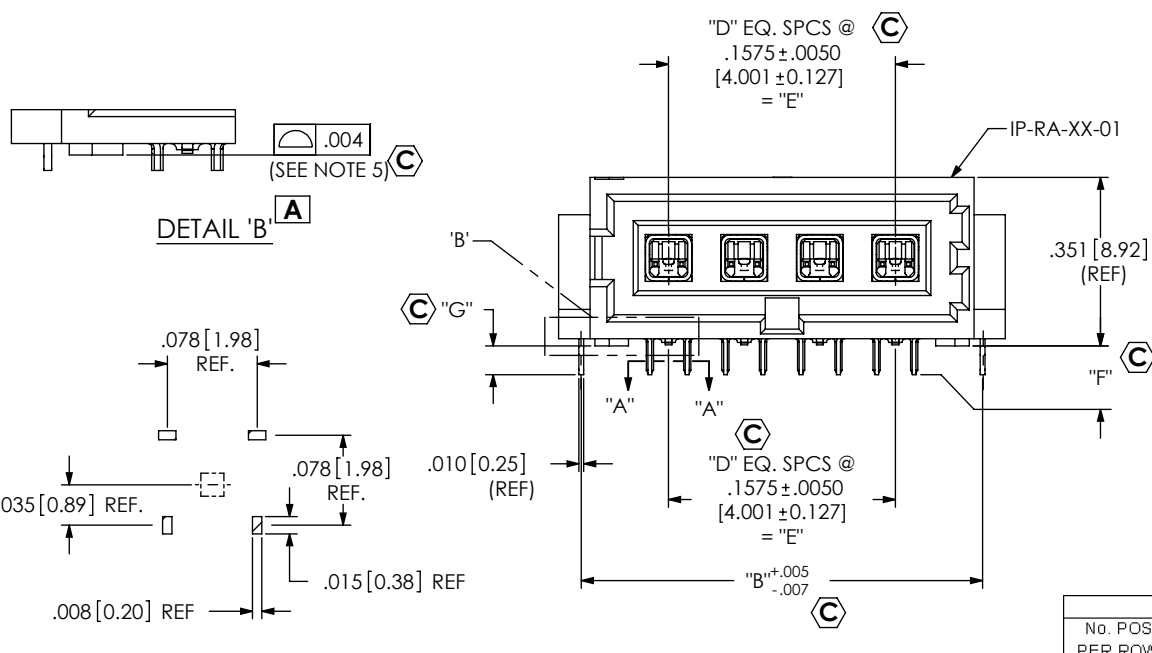
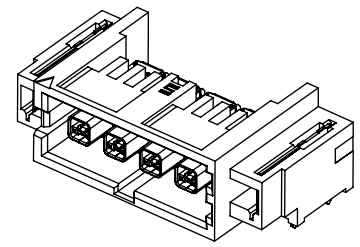


FIG. 1
(IP7-04-01-L-S-RAX-X SHOWN)

SECTION "A"- "A"
SCALE 6 : 1

TABLE 2

No. POS PER ROW	"A" (REF)	"B"	"C" (REF)	"D"	"E"
*-01	0.458 [11.64]	0.364 [9.23]	0.328 [8.32]	N/A	N/A [N/A]
-02	0.616 [15.64]	0.521 [13.23]	0.485 [12.32]	1	0.1575 [4.001]
-04	0.931 [23.64]	0.836 [21.23]	0.800 [20.32]	3	0.4725 [12.002]
-06	1.246 [31.64]	1.151 [29.24]	1.115 [28.32]	5	0.7875 [20.003]
-08	1.561 [39.64]	1.466 [37.24]	1.430 [36.32]	7	1.1025 [28.004]
*-10	1.876 [47.64]	1.781 [45.24]	1.745 [44.32]	9	1.4175 [36.005]

(* = NOT TOOLED)

TABLE 3

-TAIL OPTION	"F"	"G"
-RA1	0.060 [1.52]	0.060 [1.52]
*-RA2	0.090 [2.29]	0.090 [2.29]

(* = NOT TOOLED)

TABLE 1

ASSEMBLY	BODY	SUB-ASSEMBLY	WELD TAB
IP7-XX-01-L-S-RA1	IP-RA-XX-01	SUB-ITP7-RA-01.0-1-X	WT-45-01-T
IP7-XX-01-L-S-RA2	IP-RA-XX-01	SUB-ITP7-RA-01.0-2-X	*WT-45-02-T
IP7-XX-01-L-S-RA1-L	IP-RA-XX-01-L	SUB-ITP7-RA-01.0-1-X	WT-45-01-T
IP7-XX-01-L-S-RA2-L	IP-RA-XX-01-L	SUB-ITP7-RA-01.0-2-X	*WT-45-02-T

(* = NOT TOOLED)

- NOTES:
- Ⓢ REPRESENTS A CRITICAL DIMENSION.
 - PARTS TO BE PACKAGED IN TAPE & REEL.
 - FOR QUANTITIES UP TO 49 PIECES, NO LEADER, TRAILER OR REEL WILL BE SUPPLIED. FOR QUANTITIES OF 50-124 PIECES, NO LEADER OR TRAILER WILL BE SUPPLIED.
 - SUB-ITP7-RA AND WELD TAB: PUSH OUT AND RETENTION FORCE TO BE .5 LBS (2.2N)
 - COPLANARITY MEASUREMENTS TO INCLUDE STANDOFFS AND CENTER CONTACT ONLY.

UNLESS OTHERWISE SPECIFIED, DIMENSIONS ARE IN INCHES [MILLIMETERS]

TOLERANCES ARE:
 DECIMALS ANGLES
 .XX: ±.01 [.3]
 .XXX: ±.005 [.13]
 .XXXX: ±.0030 [.076]

PROPRIETARY NOTE
 THIS DOCUMENT CONTAINS INFORMATION CONFIDENTIAL AND PROPRIETARY TO SAMTEC, INC. AND SHALL NOT BE REPRODUCED OR TRANSFERRED TO OTHER DOCUMENTS OR DISCLOSED TO OTHERS OR USED FOR ANY PURPOSE OTHER THAN THAT WHICH IT WAS OBTAINED WITHOUT THE EXPRESSED WRITTEN CONSENT OF SAMTEC, INC.

samtec

520 PARK EAST BLVD, NEW ALBANY, IN 47150
 PHONE: 812-944-6733 FAX: 812-948-5047
 e-Mail: info@SAMTEC.com code 55322

MATERIAL: DO NOT SCALE DRAWING SHEET SCALE: 4:1
 BODY: HIGH TEMP NYLON
 SHIELD & WELD TAB: PHOS BRZ.
 TERMINAL: COPPER ALLOY
 DIELECTRIC: LCP, COLOR: NATURAL (BEIGE)

DESCRIPTION:
 75 OHM IP7-RA PLUG ASSEMBLY

DWG. NO.
IP7-XX-01-X-X-RAX-X-TR

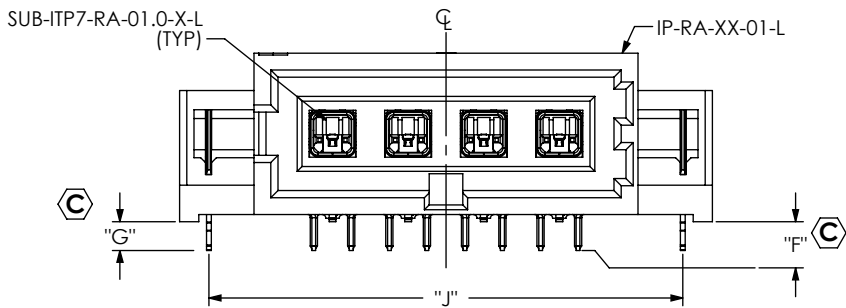
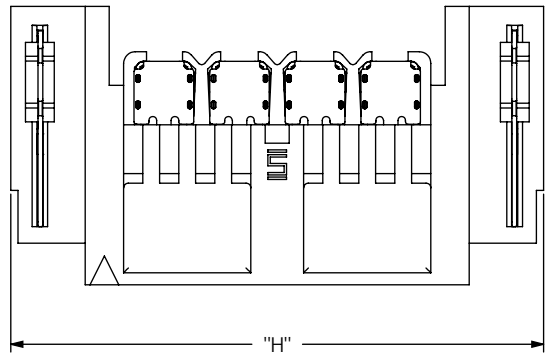
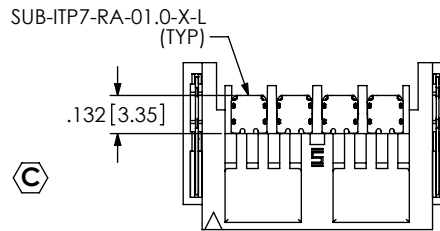


FIG.2
(IP7-04-01-L-S-RAX-L SHOWN)
(SAME AS FIG. 1, EXCEPT AS SHOWN)

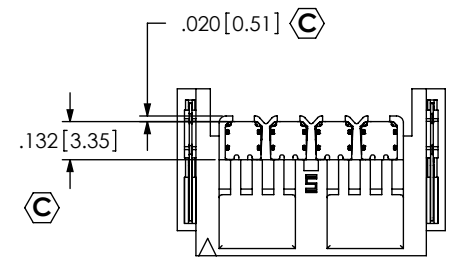
No. POS PER ROW	"H" (REF)	"J"
*-01	0.638 [16.19]	0.514 [13.06]
-02	0.795 [20.19]	0.672 [17.06]
-04	1.110 [28.19]	0.987 [25.06]
-06	1.425 [36.20]	1.302 [33.06]
-08	1.740 [44.20]	1.617 [41.06]
*-10	2.055 [52.20]	1.932 [49.07]

(* = NOT TOOLED)

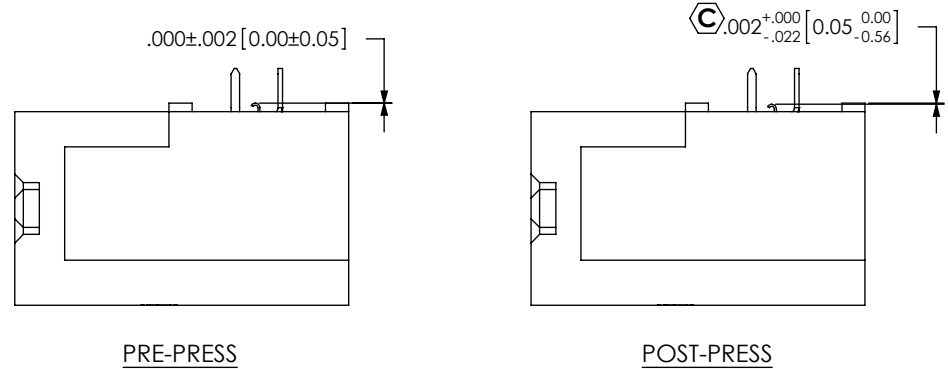
PROCESS STEP 1
(FILLING ITP7-RA SUB ASSEMBLIES INTO BODY)



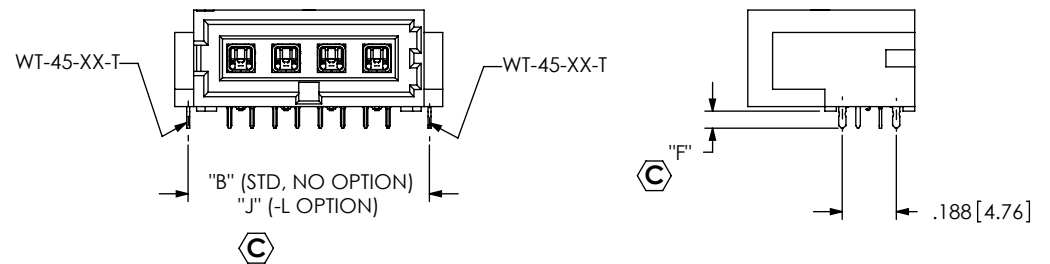
PROCESS STEP 2
(HEAT STAKING ITP7-RA SUB ASSEMBLIES INTO BODY)



PROCESS STEP 3
(REPRESS ITP7-RA SUB ASSEMBLIES INTO BODY)



PROCESS STEP 4
(FILL WT-45-XX-T WELD TABS)



F:\DWG\MISC\MKTG\IP7-XX-01-X-X-RAX-X-TR-MKT.SLDDRW

PROPRIETARY NOTE

THIS DOCUMENT CONTAINS INFORMATION CONFIDENTIAL AND PROPRIETARY TO SAMTEC, INC. AND SHALL NOT BE REPRODUCED OR TRANSFERRED TO OTHER DOCUMENTS OR DISCLOSED TO OTHERS OR USED FOR ANY PURPOSE OTHER THAN THAT WHICH IT WAS OBTAINED WITHOUT THE EXPRESSED WRITTEN CONSENT OF SAMTEC, INC.

DO NOT SCALE DRAWING

SHEET SCALE: 4:1

samtec

520 PARK EAST BLVD, NEW ALBANY, IN 47150
PHONE: 812-944-6733 FAX: 812-948-5047
e-Mail: info@SAMTEC.com code 55322

DESCRIPTION:
75 OHM IP7-RA PLUG ASSEMBLY

DWG. NO.
IP7-XX-01-X-X-RAX-X-TR

BY: KNOWLDEN 6/9/2010 SHEET 2 OF 2

Mouser Electronics

Authorized Distributor

Click to View Pricing, Inventory, Delivery & Lifecycle Information:

[Samtec:](#)

[IP7-04-01-L-S-RA1-TR](#) [IP7-08-01-L-S-RA1-TR](#) [IP7-02-01-L-S-RA1-TR](#) [IP7-08-01-L-S-RA1-L-TR](#)