







Rectangular Connectors and Cables, GDM-Series, Form A
 Valve Connector Cordsets according to DIN EN 175 301-803

VAD 1A																																								
	<p>Valve connector Actuator cordset, single-ended, valve connector according to DIN EN 175301-803, form A, with LED function indicator, varistor voltage protection, connected protective earth</p> <p>VAD 1A-1-3: 24 V AC/DC VAD 1A-2-3: 110 V AC/DC VAD 1A-3-3: 230 V AC/DC</p> <p>Outer jacket material: 212 = PVC 226 = PUR halogen-free, black</p>	<table border="1"> <thead> <tr> <th>Type</th> <th>Order No.</th> </tr> </thead> <tbody> <tr><td>VAD 1A-1-3-212/2 M</td><td>12133</td></tr> <tr><td>VAD 1A-1-3-212/5 M</td><td>12134</td></tr> <tr><td>VAD 1A-1-3-212/10 M</td><td>26741</td></tr> <tr><td>VAD 1A-1-3-226/2 M</td><td>12136</td></tr> <tr><td>VAD 1A-1-3-226/5 M</td><td>12138</td></tr> <tr><td>VAD 1A-1-3-226/10 M</td><td>12135</td></tr> <tr><td>VAD 1A-2-3-212/2 M</td><td>80187</td></tr> <tr><td>VAD 1A-2-3-212/5 M</td><td>17883</td></tr> <tr><td>VAD 1A-2-3-212/10 M</td><td>54614</td></tr> <tr><td>VAD 1A-2-3-226/2 M</td><td>43838</td></tr> <tr><td>VAD 1A-2-3-226/5 M</td><td>43839</td></tr> <tr><td>VAD 1A-2-3-226/10 M</td><td>43837</td></tr> <tr><td>VAD 1A-3-3-212/2 M</td><td>46044</td></tr> <tr><td>VAD 1A-3-3-212/5 M</td><td>46045</td></tr> <tr><td>VAD 1A-3-3-212/10 M</td><td>46046</td></tr> <tr><td>VAD 1A-3-3-226/2 M</td><td>80700</td></tr> <tr><td>VAD 1A-3-3-226/5 M</td><td>12147</td></tr> <tr><td>VAD 1A-3-3-226/10 M</td><td>46041</td></tr> </tbody> </table>	Type	Order No.	VAD 1A-1-3-212/2 M	12133	VAD 1A-1-3-212/5 M	12134	VAD 1A-1-3-212/10 M	26741	VAD 1A-1-3-226/2 M	12136	VAD 1A-1-3-226/5 M	12138	VAD 1A-1-3-226/10 M	12135	VAD 1A-2-3-212/2 M	80187	VAD 1A-2-3-212/5 M	17883	VAD 1A-2-3-212/10 M	54614	VAD 1A-2-3-226/2 M	43838	VAD 1A-2-3-226/5 M	43839	VAD 1A-2-3-226/10 M	43837	VAD 1A-3-3-212/2 M	46044	VAD 1A-3-3-212/5 M	46045	VAD 1A-3-3-212/10 M	46046	VAD 1A-3-3-226/2 M	80700	VAD 1A-3-3-226/5 M	12147	VAD 1A-3-3-226/10 M	46041
	Type	Order No.																																						
	VAD 1A-1-3-212/2 M	12133																																						
	VAD 1A-1-3-212/5 M	12134																																						
	VAD 1A-1-3-212/10 M	26741																																						
	VAD 1A-1-3-226/2 M	12136																																						
	VAD 1A-1-3-226/5 M	12138																																						
	VAD 1A-1-3-226/10 M	12135																																						
	VAD 1A-2-3-212/2 M	80187																																						
	VAD 1A-2-3-212/5 M	17883																																						
	VAD 1A-2-3-212/10 M	54614																																						
	VAD 1A-2-3-226/2 M	43838																																						
	VAD 1A-2-3-226/5 M	43839																																						
	VAD 1A-2-3-226/10 M	43837																																						
	VAD 1A-3-3-212/2 M	46044																																						
VAD 1A-3-3-212/5 M	46045																																							
VAD 1A-3-3-212/10 M	46046																																							
VAD 1A-3-3-226/2 M	80700																																							
VAD 1A-3-3-226/5 M	12147																																							
VAD 1A-3-3-226/10 M	46041																																							
VAD 1B																																								
	<p>Valve connector Actuator cordset, single-ended, valve connector according to DIN EN 175301-803, form A, with LED function indicator, suppressor diode voltage protection, connected protective earth</p> <p>Outer jacket material: 212 = PVC 226 = PUR halogen-free, black</p>	<table border="1"> <thead> <tr> <th>Type</th> <th>Order No.</th> </tr> </thead> <tbody> <tr><td>VAD 1B-1-3-212/2 M</td><td>12154</td></tr> <tr><td>VAD 1B-1-3-212/5 M</td><td>12155</td></tr> <tr><td>VAD 1B-1-3-212/10 M</td><td>46924</td></tr> <tr><td>VAD 1B-1-3-226/2 M</td><td>43841</td></tr> <tr><td>VAD 1B-1-3-226/5 M</td><td>43842</td></tr> <tr><td>VAD 1B-1-3-226/10 M</td><td>43840</td></tr> </tbody> </table>	Type	Order No.	VAD 1B-1-3-212/2 M	12154	VAD 1B-1-3-212/5 M	12155	VAD 1B-1-3-212/10 M	46924	VAD 1B-1-3-226/2 M	43841	VAD 1B-1-3-226/5 M	43842	VAD 1B-1-3-226/10 M	43840																								
	Type	Order No.																																						
	VAD 1B-1-3-212/2 M	12154																																						
	VAD 1B-1-3-212/5 M	12155																																						
	VAD 1B-1-3-212/10 M	46924																																						
	VAD 1B-1-3-226/2 M	43841																																						
VAD 1B-1-3-226/5 M	43842																																							
VAD 1B-1-3-226/10 M	43840																																							
VAD 1D																																								
	<p>Valve connector Actuator cordset, single-ended, valve connector according to DIN EN 175301-803, form A, without circuitry, 2 + earth connection, connected protective earth</p> <p>Outer jacket material: 205 = PVC</p>	<table border="1"> <thead> <tr> <th>Type</th> <th>Order No.</th> </tr> </thead> <tbody> <tr><td>VAD 1D-3-3-205/2 M</td><td>12164</td></tr> <tr><td>VAD 1D-3-3-205/5 M</td><td>12165</td></tr> <tr><td>VAD 1D-3-3-205/10 M</td><td>46925</td></tr> </tbody> </table>	Type	Order No.	VAD 1D-3-3-205/2 M	12164	VAD 1D-3-3-205/5 M	12165	VAD 1D-3-3-205/10 M	46925																														
	Type	Order No.																																						
	VAD 1D-3-3-205/2 M	12164																																						
VAD 1D-3-3-205/5 M	12165																																							
VAD 1D-3-3-205/10 M	46925																																							
VAD 1F																																								
	<p>Valve connector Actuator cordset, single-ended, valve connector according to DIN EN 175301-803, form A, with LED function indicator, recovery diode voltage protection, connected protective earth</p> <p>Outer jacket material: 212 = PVC 226 = PUR halogen-free, black</p>	<table border="1"> <thead> <tr> <th>Type</th> <th>Order No.</th> </tr> </thead> <tbody> <tr><td>VAD 1F-4-3-212/2 M</td><td>28569</td></tr> <tr><td>VAD 1F-4-3-212/5 M</td><td>26366</td></tr> <tr><td>VAD 1F-4-3-212/10 M</td><td>46926</td></tr> <tr><td>VAD 1F-4-3-226/2 M</td><td>12166</td></tr> <tr><td>VAD 1F-4-3-226/5 M</td><td>12167</td></tr> <tr><td>VAD 1F-4-3-226/10 M</td><td>30523</td></tr> </tbody> </table>	Type	Order No.	VAD 1F-4-3-212/2 M	28569	VAD 1F-4-3-212/5 M	26366	VAD 1F-4-3-212/10 M	46926	VAD 1F-4-3-226/2 M	12166	VAD 1F-4-3-226/5 M	12167	VAD 1F-4-3-226/10 M	30523																								
	Type	Order No.																																						
	VAD 1F-4-3-212/2 M	28569																																						
	VAD 1F-4-3-212/5 M	26366																																						
	VAD 1F-4-3-212/10 M	46926																																						
VAD 1F-4-3-226/2 M	12166																																							
VAD 1F-4-3-226/5 M	12167																																							
VAD 1F-4-3-226/10 M	30523																																							
VAD 3C-4-1																																								
	<p>Valve connector Sensor cordset, single-ended, connector for pressure switches, according to DIN EN 175301-803, form A, with LED operation and function indicator</p> <p>Outer jacket material: 228 = PUR halogen-free, black 259 = PUR halogen-free, black, welding spark proof</p>	<table border="1"> <thead> <tr> <th>Type</th> <th>Order No.</th> </tr> </thead> <tbody> <tr><td>VAD 3C-4-1-228/2 M</td><td>12168</td></tr> <tr><td>VAD 3C-4-1-228/5 M</td><td>12169</td></tr> <tr><td>VAD 3C-4-1-228/10 M</td><td>16036</td></tr> <tr><td>VAD 3C-4-1-259/2 M</td><td>12172</td></tr> <tr><td>VAD 3C-4-1-259/5 M</td><td>12173</td></tr> <tr><td>VAD 3C-4-1-259/10 M</td><td>46927</td></tr> </tbody> </table>	Type	Order No.	VAD 3C-4-1-228/2 M	12168	VAD 3C-4-1-228/5 M	12169	VAD 3C-4-1-228/10 M	16036	VAD 3C-4-1-259/2 M	12172	VAD 3C-4-1-259/5 M	12173	VAD 3C-4-1-259/10 M	46927																								
	Type	Order No.																																						
	VAD 3C-4-1-228/2 M	12168																																						
	VAD 3C-4-1-228/5 M	12169																																						
	VAD 3C-4-1-228/10 M	16036																																						
	VAD 3C-4-1-259/2 M	12172																																						
VAD 3C-4-1-259/5 M	12173																																							
VAD 3C-4-1-259/10 M	46927																																							
VAD 3C-4-2																																								
	<p>Valve connector Sensor cordset, single-ended, connector for pressure switches, according to DIN EN 175301-803, form A, with LED operation and function indicator, cable exit 180°</p> <p>Outer jacket material: 228 = PUR halogen-free, black 259 = PUR halogen-free, black, welding spark proof</p>	<table border="1"> <thead> <tr> <th>Type</th> <th>Order No.</th> </tr> </thead> <tbody> <tr><td>VAD 3C-4-2-228/2 M</td><td>12174</td></tr> <tr><td>VAD 3C-4-2-228/5 M</td><td>12175</td></tr> <tr><td>VAD 3C-4-2-228/10 M</td><td>16037</td></tr> <tr><td>VAD 3C-4-2-259/2 M</td><td>12178</td></tr> <tr><td>VAD 3C-4-2-259/5 M</td><td>12179</td></tr> <tr><td>VAD 3C-4-2-259/10 M</td><td>46928</td></tr> </tbody> </table>	Type	Order No.	VAD 3C-4-2-228/2 M	12174	VAD 3C-4-2-228/5 M	12175	VAD 3C-4-2-228/10 M	16037	VAD 3C-4-2-259/2 M	12178	VAD 3C-4-2-259/5 M	12179	VAD 3C-4-2-259/10 M	46928																								
	Type	Order No.																																						
	VAD 3C-4-2-228/2 M	12174																																						
	VAD 3C-4-2-228/5 M	12175																																						
	VAD 3C-4-2-228/10 M	16037																																						
	VAD 3C-4-2-259/2 M	12178																																						
VAD 3C-4-2-259/5 M	12179																																							
VAD 3C-4-2-259/10 M	46928																																							

Rectangular Connectors and Cables, GDM-Series, Form A

Field Attachable Valve Connectors according to DIN EN 175 301-803

GDM 2016



Field attachable rectangular connector with central screw M 3x35, 2 poles + PE, screw joint for cable M16, Standard DIN EN 175 301-803-A

Type	Order No.
GDM 2016 black	934 393-100
GDM 2016 grey	934 393-106

GDM 2009



Field attachable rectangular connector with central screw M 3x35, 2 poles + PE, screw joint for cable PG 9, Standard DIN EN 175 301-803-A

Type	Order No.
GDM 2009 black	931 965-100
GDM 2009 grey	931 965-106

GDM 2009 J



Field attachable rectangular connector with central screw M 3x35, 2 poles + PE, screw joint for cable PG 9, Standard DIN EN 175 301-803-A, UL approved

Type	Order No.
GDM 2009 J black	931 236-100
GDM 2009 J grey	931 236-106

GDM 2011



Field attachable rectangular connector with central screw M 3x35, 2 poles + PE, screw joint for cable PG 11, Standard DIN EN 175 301-803-A

Type	Order No.
GDM 2011 black	931 957-100
GDM 2011 grey	931 957-106

GDM 2011 J



Field attachable rectangular connector with central screw M 3x35, 2 poles + PE, screw joint for cable PG 11, Standard DIN EN 175 301-803-A, UL approved

Type	Order No.
GDM 2011 J black	932 106-100
GDM 2011 J grey	932 106-106

GDM 2012 J black



Field attachable rectangular connector with central screw M 3x35, 2 poles + PE, screw joint for cable 1/2" NPTF, Standard DIN EN 175 301-803-A, UL approved

Type	Order No.
GDM 2012 J black	934 441-100

GDM 2014 J black



Field attachable rectangular connector with central screw M 3x35, 2 poles + PE, screw joint for cable ISO 228 – G 1/2 (R 1/2"), Standard DIN EN 175 301-803-A, UL approved

Type	Order No.
GDM 2014 J black	932 107-100

Rectangular Connectors and Cables, GDM-Series, Form A

Field Attachable Valve Connectors according to DIN EN 175 301-803

GDM 3016

Field attachable rectangular connector, with central screw M 3x35, 3 poles + PE, screw joint for cable M16, Standard DIN EN 175 301-803-A

Type	Order No.
GDM 3016 black	934 395-100
GDM 3016 grey	934 395-106

GDM 3009

Field attachable rectangular connector, with central screw M 3x35, 3 poles + PE, screw joint for cable PG 9, Standard DIN EN 175 301-803-A

Au = with gold-plated contacts

Type	Order No.
GDM 3009 black	931 969-100
GDM 3009 grey	931 969-106
GDM 3009 Au	931 969-001

GDM 3009 J black

Field attachable rectangular connector, with central screw M 3x35, 3 poles + PE, screw joint for cable PG 9, Standard DIN EN 175 301-803-A, UL approved

Type	Order No.
GDM 3009 J black	932 214-100

GDM 3011

Field attachable rectangular connector, with central screw M 3x35, 3 poles + PE, screw joint for cable PG 11, Standard DIN EN 175 301-803-A

Type	Order No.
GDM 3011 black	931 952-100
GDM 3011 grey	931 952-106

GDM 3011 J

Field attachable rectangular connector, with central screw M 3x35, 3 poles + PE, screw joint for cable PG 11, Standard DIN EN 175 301-803-A, UL approved

Type	Order No.
GDM 3011 J black	932 109-100
GDM 3011 J grey	932 109-106

GDM 3012 J black

Field attachable rectangular connector, not assembled, with central screw M 3x35, 3 poles + PE, screw joint for cable 1/2" NPTF, Standard DIN EN 175 301-803-A, UL approved

Type	Order No.
GDM 3012 J black	932 519-100

GDM 3014 J black

Field attachable rectangular connector, with central screw M 3x35, 3 poles + PE, screw joint for cable ISO 228 – G 1/2 (R 1/2"), Standard DIN EN 175 301-803-A, UL approved

Type	Order No.
GDM 3014 J black	932 110-100

Rectangular Connectors and Cables, GDM-Series, Form A
Field Attachable Valve Connectors according to DIN EN 175 301-803

GDMF 2016 DAAA | GDMF 3016 DAAA



Field attachable rectangular connector, with central screw M 3x28, flat design, without electronic inserts, contact tin-plated, screw joint for cable M 16, seal material, non-slip surfaces on both sides, Standard DIN EN 175 301-803-A

GDMF 2016... = 2 poles + PE
GDMF 3016... = 3 poles + PE

Type	Order No.
GDMF 2016 DAAA	934 618-001
GDMF 3016 DAAA	934 618-002

GDMF 2016



Field attachable rectangular connector, with central screw M 3x28, flat design, with electronic inserts, 2 poles + PE, contact tin-plated, screw joint for cable M 16, seal material, non-slip surfaces on both sides, Standard DIN EN 175 301-803-A

DBAA = LED yellow 24 V
DCAA = LED yellow 120 V
DEAA = LED yellow 250 V
DFAA = LED yellow 24 V + suppression diode
DGAA = LED yellow 24 V + recovery diode
DLAA = LED yellow 250 V + varistor
DRAA = LED yellow 120 V + varistor

Type	Order No.
GDMF 2016 DBAA	934 618-003
GDMF 2016 DCAA	934 618-004
GDMF 2016 DEAA	934 618-005
GDMF 2016 DFAA	934 618-006
GDMF 2016 DGAA	934 618-007
GDMF 2016 DLAA	934 618-008
GDMF 2016 DRAA	934 618-009

GDMC 3016



Field attachable rectangular connector, with central screw M 3x35 and 4 crimp contacts RBC 630, 3 poles + PE, screw joint for cable M16, Standard DIN EN 175 301-803-A

Type	Order No.
GDMC 3016 black	934 398-100
GDMC 3016 grey	934 398-106

GDMC 0016 JPT



Field attachable rectangular connector, not assembled, with central screw M 3x35 for junior-power-timer contacts, without contacts, 2 poles + PE / 3 + PE, screw joint for cable M16, pole arrangement according to Standard DIN EN 175 301-803-A

Type	Order No.
GDMC 0016 JPT black	934 397-100

GDMC 3011



Field attachable rectangular connector, with central screw M 3x35 and 4 crimp contacts RBC 630, 2 poles + PE / 3 + PE, screw joint for cable PG 11, Standard DIN EN 175 301-803-A

Type	Order No.
GDMC 3011 black	931 963-100

GDMW 3011 CF



Field attachable rectangular connector for heating appliance according to DIN VDE 0722 section 1-2 and gas safety shut-off device according to DIN 3394 T1, 3 poles + PE, screw joint for cable PG 11, Standard DIN EN 175 301-803-A

Type	Order No.
GDMW 3011 CF black	932 545-200
GDMW 3011 CF grey	932 545-206

GDMW 3011 DF



Field attachable rectangular connector for heating appliance according to DIN VDE 0722 section 1-2 and gas safety shut-off device according to DIN 3394 T1, additional contact protection 6 mm, air and creepage gap according to DIN VDE 0700 T1 (IEC 335-1) and DIN VDE 0722, 3 poles + PE, screw joint for cable PG 11, Standard DIN EN 175 301-803-A

Type	Order No.
GDMW 3011 DF black	932 547-200
GDMW 3011 DF grey	932 547-206

Rectangular Connectors and Cables, GDM-Series, Form A

Field Attachable Valve Connectors according to DIN EN 175 301-803

GDMC 0009 JPT black

Field attachable rectangular connector, not assembled, with central screw M 3x35 for junior-power-timer contacts, without contacts, 2 poles + PE/3 + PE, screw joint for cable PG 9, pole arrangement according to Standard DIN EN 175 301-803-A

Type	Order No.
GDMC 0009 JPT black	933 583-100

GDMC 0011 JPT black

Field attachable rectangular connector, not assembled, with central screw M 3x35 for junior-power-timer contacts, without contacts, 2 poles + PE/3 + PE, screw joint for cable PG 11, pole arrangement according to Standard DIN EN 175 301-803-A

Type	Order No.
GDMC 0011 JPT black	933 364-100

GDM 3011 AU black

Field attachable rectangular connector, with gold-plated contacts and central screw M 3x35, 3 poles + PE, screw joint for cable PG 11, Standard DIN EN 175 301-803-A

Type	Order No.
GDM 3011 AU black	931 952-001

GDML 2016 GB1

Field attachable rectangular connector, bridge-type rectifier with varistor voltage protection, 2 poles + PE, screw joint for cable M16, Standard DIN EN 175 301-803-A

Type	Order No.
GDML 2016 GB1 black	934 407-100
GDML 2016 GB1 grey	934 407-106

GDML 2016 GBC black

Field attachable rectangular connector, bridge-type rectifier with protective circuit (varistor and capacitor) for electromagnetic compatibility critical applications, 2 poles + PE, screw joint for cable M16 (black), Standard DIN EN 175 301-803-A

Type	Order No.
GDML 2016 GBC black	934 408-100

GDML 2016 GE 1 G black

Field attachable rectangular connector, half-wave rectifier with protective circuit (diode), 2 poles + PE, screw joint for cable M16 (black), Standard DIN EN 175 301-803-A

Type	Order No.
GDML 2016 GE 1 G black	934 409-100

GDML 2016 GB1 LED 24 black

Field attachable rectangular connector, bridge-type rectifier with varistor voltage protection and function indicator (LED), 2 poles + PE, screw joint for cable M16 (black), Standard DIN EN 175 301-803-A

Type	Order No.
GDML 2016 GB1 LED 24 black	934 410-002

Rectangular Connectors and Cables, GDM-Series, Form A

Field Attachable Rectangular Connectors with Electronic Inserts according to DIN EN 175 301-803

GDML 2016 LED 24 GB

Field attachable rectangular connector, LED rectifier with varistor voltage protection and function indicator (LED), 2 poles + PE, screw joint for cable M16, Standard DIN EN 175 301-803-A

Type	Order No.
GDML 2016 LED 24 GB black	934 411-002
GDML 2016 LED 24 GB grey	934 411-003

GDML 2016 LED 24

Field attachable rectangular connector, function indicator (LED red) with recovery diode, 2 poles + PE, screw joint for cable M16, Standard DIN EN 175 301-803-A

Type	Order No.
GDML 2016 LED 24 black	934 412-002
GDML 2016 LED 24 grey	934 412-003

GDML 2016 LED 24 YE

Field attachable rectangular connector, function indicator (LED yellow) with recovery diode, 2 poles + PE, screw joint for cable M16, Standard DIN EN 175 301-803-A

Type	Order No.
GDML 2016 LED 24 YE black	934 413-002
GDML 2016 LED 24 YE grey	934 413-003

GDML 2016 LED 24 HH P

Field attachable rectangular connector, half-wave rectifier with protective circuit (diode) and function indicator (LED), 2 poles + PE, screw joint for cable M16, Standard DIN EN 175 301-803-A

Type	Order No.
GDML 2016 LED 24 HH P black	934 414-002
GDML 2016 LED 24 HH P grey	934 414-003

GDML 2016 LED 24 HH

Field attachable rectangular connector, function indicator (LED) with protective circuit (diode), 2 poles + PE, screw joint for cable M16, Standard DIN EN 175 301-803-A

Type	Order No.
GDML 2016 LED 24 HH black	934 415-002
GDML 2016 LED 24 HH grey	934 415-003

GDML 2016 LED 24 HH YE

Field attachable rectangular connector, function indicator (LED) with protective circuit (diode), 2 poles + PE, screw joint for cable M16, Standard DIN EN 175 301-803-A

Type	Order No.
GDML 2016 LED 24 HH YE black	934 416-002
GDML 2016 LED 24 HH YE grey	934 416-003

GDML 2016 LED 24 VR YE

Field attachable rectangular connector, function indicator (LED) with recovery diode and varistor voltage protection, 2 poles + PE, screw joint for cable M16, Standard DIN EN 175 301-803-A

Type	Order No.
GDML 2016 LED 24 VR YE black	934 417-002
GDML 2016 LED 24 VR YE grey	934 417-003

Rectangular Connectors and Cables, GDM-Series, Form A

Field Attachable Rectangular Connectors with Electronic Inserts according to DIN EN 175 301-803

GDML 2016 LED 24 VR black

Field attachable rectangular connector, function indicator (LED) with recovery diode and varistor voltage protection, 2 poles + PE, screw joint for cable M16 (black), Standard DIN EN 175 301-803-A

Type	Order No.
GDML 2016 LED 24 VR black	934 418-002

GDML 2016 LED 48 HH black

Field attachable rectangular connector, function indicator (LED) with protective circuit (diode), 2 poles + PE, screw joint for cable M16 (black), Standard DIN EN 175 301-803-A

Type	Order No.
GDML 2016 LED 48 HH black	934 419-002

GDML 2016 LED 48 VR black

Field attachable rectangular connector, function indicator (LED) with recovery diode and varistor voltage protection, 2 poles + PE, screw joint for cable M16 (black), Standard DIN EN 175 301-803-A

Type	Order No.
GDML 2016 LED 48 VR black	934 420-002

GDML 2016 LED 48 VR YE black

Field attachable rectangular connector, function indicator (LED) with recovery diode and varistor voltage protection, 2 poles + PE, screw joint for cable M16 (black), Standard DIN EN 175 301-803-A

Type	Order No.
GDML 2016 LED 48 VR YE black	934 421-002

GDML 2016 GB1 LED 48 black

Field attachable rectangular connector, bridge-type rectifier with varistor voltage protection and function indicator (LED), 2 poles + PE, screw joint for cable M16 (black), Standard DIN EN 175 301-803-A

Type	Order No.
GDML 2016 GB1 LED 48 black	934 422-002

GDML 2016 LED 120 YE

Field attachable rectangular connector, function indicator (bipolar LED), 2 poles + PE, screw joint for cable M16, Standard DIN EN 175 301-803-A

Type	Order No.
GDML 2016 LED 120 YE black	934 423-002
GDML 2016 LED 120 YE grey	934 423-003

GDML 2016 LED 120 VR YE

Field attachable rectangular connector, function indicator (LED) with recovery diode and varistor voltage protection, 2 poles + PE, screw joint for cable M16, Standard DIN EN 175 301-803-A

Type	Order No.
GDML 2016 LED 120 VR YE black	934 424-002
GDML 2016 LED 120 VR YE grey	934 424-003

Rectangular Connectors and Cables, GDM-Series, Form A

Field Attachable Rectangular Connectors with Electronic Inserts according to DIN EN 175 301-803

GDM 2016 LED 230 YE

Field attachable rectangular connector, function indicator (bipolar LED), 2 poles + PE, screw joint for cable M16, Standard DIN EN 175 301-803-A

Type	Order No.
GDM 2016 LED 230 YE black	934 425-002
GDM 2016 LED 230 YE grey	934 425-003

GDM 2016 LED 230 VR YE

Field attachable rectangular connector, function indicator (LED) with recovery diode and varistor voltage protection, 2 poles + PE, screw joint for cable M16, Standard DIN EN 175 301-803-A

Type	Order No.
GDM 2016 LED 230 VR YE black	934 426-002
GDM 2016 LED 230 VR YE grey	934 426-003

GDM 2016 LED 12-250 PTC ZZ sw

Field attachable rectangular connector, function indicator (LED) with recovery diode and varistor voltage protection, 2 poles + PE, screw joint for cable M16, Standard DIN EN 175 301-803-A

Type	Order No.
GDM 2016 LED 12-250 PTC ZZ sw	934 539-001

GDM 3016 LED 230 RG black

Field attachable rectangular connector, function indicator (LED) with recovery diode and varistor voltage protection, 3 poles + PE, screw joint for cable M16, Standard DIN EN 175 301-803-A

Type	Order No.
GDM 3016 LED 230 RG black	934 434-002

GDM 2009 RC 230 1 black

Field attachable rectangular connector, RC element (electromagnetic compatibility critical applications) with suppression capacitor and function indicator (glow lamp), 2 poles + PE, screw joint for cable PG 9 (black), Standard DIN EN 175 301-803-A

Type	Order No.
GDM 2009 RC 230 1 black	933 802-112

GDM 2011 GB1

Field attachable rectangular connector, bridge-type rectifier with varistor voltage protection, 2 poles + PE, screw joint for cable PG 11, Standard DIN EN 175 301-803-A

Type	Order No.
GDM 2011 GB1 black	932 329-100
GDM 2011 GB1 grey	932 329-106

GDM 2011 GB C

Field attachable rectangular connector, bridge-type rectifier with protective circuit (varistor and capacitor) for electromagnetic compatibility critical applications, 2 poles + PE, screw joint for cable PG 11, Standard DIN EN 175 301-803-A

Type	Order No.
GDM 2011 GB C black	933 923-100
GDM 2011 GB C grey	933 923-106

Rectangular Connectors and Cables, GDM-Series, Form A

Field Attachable Rectangular Connectors with Electronic Inserts according to DIN EN 175 301-803

GDML 2011 GE 1 G black

Field attachable rectangular connector, half-wave rectifier with protective circuit (diode), 2 poles + PE, screw joint for cable PG 11, Standard DIN EN 175 301-803-A

Type	Order No.
GDML 2011 GE 1 G black	932 330-100

GDML 2011 GB1 LED 24

Field attachable rectangular connector, bridge-type rectifier with varistor voltage protection and function indicator (LED), 2 poles + PE, screw joint for cable PG 11 (black), Standard DIN EN 175 301-803-A

Type	Order No.
GDML 2011 GB1 LED 24 black	932 446-002
GDML 2011 GB1 LED 24 grey	932 446-003

GDML 2011 LED 24 GB

Field attachable rectangular connector, LED rectifier with varistor voltage protection and function indicator (LED), 2 poles + PE, screw joint for cable PG 11, Standard DIN EN 175 301-803-A

Type	Order No.
GDML 2011 LED 24 GB black	932 501-002
GDML 2011 LED 24 GB grey	932 501-003

GDML 2011 LED 24

Field attachable rectangular connector, function indicator (LED) with recovery diode, 2 poles + PE, screw joint for cable PG 11, Standard DIN EN 175 301-803-A

Type	Order No.
GDML 2011 LED 24 black	932 332-002
GDML 2011 LED 24 grey	932 332-003

GDML 2011 LED 24 YE

Field attachable rectangular connector, function indicator (LED) with recovery diode, 2 poles + PE, screw joint for cable PG 11 (black), Standard DIN EN 175 301-803-A

Type	Order No.
GDML 2011 LED 24 YE black	932 527-002
GDML 2011 LED 24 YE grey	932 527-003

GDML 2011 LED 24 HH P

Field attachable rectangular connector, half-wave rectifier with protective circuit (diode) and function indicator (LED), 2 poles + PE, screw joint for cable PG 11, Standard DIN EN 175 301-803-A

Type	Order No.
GDML 2011 LED 24 HH P black	932 444-002
GDML 2011 LED 24 HH P grey	932 444-003

GDML 2011 LED 24 HH

Field attachable rectangular connector, function indicator (LED) with protective circuit (diode), 2 poles + PE, screw joint for cable PG 11, Standard DIN EN 175 301-803-A

Type	Order No.
GDML 2011 LED 24 HH black	932 336-002
GDML 2011 LED 24 HH grey	932 336-003

Rectangular Connectors and Cables, GDM-Series, Form A

Field Attachable Rectangular Connectors with Electronic Inserts according to DIN EN 175 301-803

GDM 2011 LED 24 HH YE

Field attachable rectangular connector, function indicator (LED) with protective circuit (diode), 2 poles + PE, screw joint for cable PG 11, Standard DIN EN 175 301-803-A

Type	Order No.
GDM 2011 LED 24 HH YE black	932 640-002
GDM 2011 LED 24 HH YE grey	932 640-003

GDM 2011 LED 24 VR YE

Field attachable rectangular connector, function indicator (LED) with recovery diode and varistor voltage protection, 2 poles + PE, screw joint for cable PG 11, Standard DIN EN 175 301-803-A

Type	Order No.
GDM 2011 LED 24 VR YE black	933 737-212
GDM 2011 LED 24 VR YE grey	933 737-712

GDM 2011 LED 24 VR black

Field attachable rectangular connector, function indicator (LED) with recovery diode and varistor voltage protection, 2 poles + PE, screw joint for cable PG 11 (black), Norm DIN EN 175 301-803-A

Type	Order No.
GDM 2011 LED 24 VR black	932 521-002

GDM 2011 LED 48 HH black

Field attachable rectangular connector, function indicator (LED) with protective circuit (diode), 2 poles + PE, screw joint for cable PG 11 (black), Standard DIN EN 175 301-803-A

Type	Order No.
GDM 2011 LED 48 HH black	932 648-002

GDM 2011 LED 48 VR

Field attachable rectangular connector, function indicator (LED) with recovery diode and varistor voltage protection, 2 poles + PE, screw joint for cable PG 11, Standard DIN EN 175 301-803-A

Type	Order No.
GDM 2011 LED 48 VR black	933 924-212
GDM 2011 LED 48 VR grey	933 924-712

GDM 2011 LED 48 VR YE black

Field attachable rectangular connector, function indicator (LED) with recovery diode and varistor voltage protection, 2 poles + PE, screw joint for cable PG 11 (black), Norm DIN EN 175 301-803-A

Type	Order No.
GDM 2011 LED 48 VR YE black	933 926-212

GDM 2011 GB1 LED 48 black

Field attachable rectangular connector, bridge-type rectifier with varistor voltage protection and function indicator (LED), 2 poles + PE, screw joint for cable PG 11 (black), Norm DIN EN 175 301-803-A

Type	Order No.
GDM 2011 GB1 LED 48 black	933 925-212

Rectangular Connectors and Cables, GDM-Series, Form A

Field Attachable Rectangular Connectors with Electronic Inserts according to DIN EN 175 301-803

GDML 2011 LED 120 YE

Field attachable rectangular connector, function indicator (bipolar LED), 2 poles + PE, screw joint for cable PG 11, Standard DIN EN 175 301-803-A

Type	Order No.
GDML 2011 LED 120 YE black	933 738-212
GDML 2011 LED 120 YE grey	933 738-712

GDML 2011 LED 120 VR YE

Field attachable rectangular connector, function indicator (LED) with recovery diode and varistor voltage protection, 2 poles + PE, screw joint for cable PG 11, Standard DIN EN 175 301-803-A

Type	Order No.
GDML 2011 LED 120 VR YE black	933 927-212
GDML 2011 LED 120 VR YE grey	933 927-712

GDML 2011 LED 230 YE

Field attachable rectangular connector, function indicator (bipolar LED), 2 poles + PE, screw joint for cable PG 11, Standard DIN EN 175 301-803-A

Type	Order No.
GDML 2011 LED 230 YE black	933 739-212
GDML 2011 LED 230 YE grey	933 739-712

GDML 2011 LED 230 VR YE

Field attachable rectangular connector, function indicator (LED) with recovery diode and varistor voltage protection, 2 poles + PE, screw joint for cable PG 11, Standard DIN EN 175 301-803-A

Type	Order No.
GDML 2011 LED 230 VR YE black	933 916-212
GDML 2011 LED 230 VR YE grey	933 916-712

GDML 3011 LED 24 BO black

Field attachable rectangular connector, function indicator (LED) for pressure switches, 3 poles + PE, screw joint for cable PG 11 (black), Standard DIN EN 175 301-803-A

Type	Order No.
GDML 3011 LED 24 BO black	932 856-002

GDML 3011 LED 24 RG black

Field attachable rectangular connector, function indicator (2 LEDs) for pressure switches, 3 poles + PE, screw joint for cable PG 11 (black), Standard DIN EN 175 301-803-A

Type	Order No.
GDML 3011 LED 24 RG black	932 857-002

GDML 3011 LED 230 RG

Field attachable rectangular connector, function indicator (2 LEDs) for pressure switches, 3 poles + PE, screw joint for cable PG 11, Standard DIN EN 175 301-803-A

Type	Order No.
GDML 3011 LED 230 RG black	933 748-212
GDML 3011 LED 230 RG grey	933 748-712

Rectangular Connectors and Cables, GDM-Series, Form A

Field Attachable Rectangular Connectors with Electronic Inserts (GDME) according to DIN EN 175 301-803

GDME 2011

Field attachable rectangular connector, with central screw M 3x40, strain relief and transparent cover, possibility to fit electronic inserts, 2 poles + PE, screw joint for cable PG 11, Norm DIN EN 175 301-803-A

Type	Order No.
GDME 2011 black	933 029-100
GDME 2011 grey	933 029-106

GDME 2013

Field attachable rectangular connector, with central screw M 3x40, strain relief and transparent cover, possibility to fit electronic inserts, 2 poles + PE, screw joint for cable PG 13.5, Standard DIN EN 175 301-803-A

Type	Order No.
GDME 2013 black	933 030-100
GDME 2013 grey	933 030-106

GDME 3011

Field attachable rectangular connector, with central screw M 3x40, strain relief and transparent cover, possibility to fit electronic inserts, 3 poles + PE, screw joint for cable PG 11, Standard DIN EN 175 301-803-A

Type	Order No.
GDME 3011 black	933 022-100
GDME 3011 grey	933 022-106

GDME 3013

Field attachable rectangular connector, with central screw M 3x40, strain relief and transparent cover, possibility to fit electronic inserts, 3 poles + PE, screw joint for cable PG 13.5, Standard DIN EN 175 301-803-A

Type	Order No.
GDME 3013 black	933 031-100
GDME 3013 grey	933 031-106

GDME 3020

Field attachable rectangular connector, with central screw M 3x40, strain relief and transparent cover, possibility to fit electronic inserts, 3 poles + PE, screw joint for cable M20, Standard DIN EN 175 301-803-A

Type	Order No.
GDME 3020 black	934 455-100
GDME 3020 grey	934 455-106

GDME 2011 Timer black

Field attachable rectangular connector, with integrated timer, times may be set independently of one another by means of potentiometer, 8 different switching programs with function indicator (LED) and integral protective wiring + added gasket, 3 poles + PE, screw joint for cable PG 11 (black), Standard DIN EN 175 301-803-A

Type	Order No.
GDME 2011 Timer black	933 719-100

GDME LED 24 GB YE

Electronic insert with LED rectifier with varistor voltage protection and function indicator (LED), indicator LED yellow, Standard DIN EN 175 301-803-A

Type	Order No.
GDME LED 24 GB YE	831 870-001

Rectangular Connectors and Cables, GDM-Series, Form A

Electronic Inserts (GDME) according to DIN EN 175 301-803

GDME LED 24 HH YE

Electronic insert with function indicator (LED) with protective circuit, indicator LED yellow, Standard DIN EN 175 301-803-A

Type	Order No.
GDME LED 24 HH YE	831 873-001

GDME LED 24 YE

Electronic insert with function indicator (LED) with recovery diode, indicator LED yellow, Standard DIN EN 175 301-803-A

Type	Order No.
GDME LED 24 YE	831 863-001

GDME LED 24 RD

Electronic insert with LED rectifier with varistor voltage protection and function indicator (LED), LED yellow, Standard DIN EN 175 301-803-A

Type	Order No.
GDME LED 24 RD	831 839-001

GDME HDL 24 GB YE

Electronic insert with LED rectifier with function indicator (LED), LED yellow, Standard DIN EN 175 301-803-A

Type	Order No.
GDME HDL 24 GB YE	831 852-001

GDME HDL 24 YE

Electronic insert with function indicator (LED) with recovery diode, LED yellow, Standard DIN EN 175 301-803-A

Type	Order No.
GDME HDL 24 YE	832 028-001

GDME LG 120

Electronic insert with function indicator (Glow lamp), Standard DIN EN 175 301-803-A

Type	Order No.
GDME LG 120	831 826-001

GDME GB1 LG 230

Electronic insert with bridge-type rectifier with varistor voltage protection and function indicator (Glow lamp), Standard DIN EN 175 301-803-A

Type	Order No.
GDME GB1 LG 230	831 834-001

Rectangular Connectors and Cables, GDM-Series, Form A

Electronic Inserts (GDME) according to DIN EN 175 301-803

GDME GB1

Electronic insert with bridge-type rectifier with varistor voltage protection, Standard DIN EN 175 301-803-A

Type	Order No.
GDME GB1	831 832-001

GDME 2 LED 24

Electronic insert with function indicator (2 LEDs), LED yellow/LED green, Standard DIN EN 175 301-803-A

Type	Order No.
GDME 2 LED 24	831 876-001

GDME LG 230

Electronic insert with function indicator (Glow lamp), Standard DIN EN 175 301-803-A

Type	Order No.
GDME LG 230	831 824-001

GDME UV 1

Electronic insert with unequipped circuit board with 2 fork type springs and 2 clamping boxes, Standard DIN EN 175 301-803-A

Type	Order No.
GDME UV 1	931 415-000

GDME UV 3 N

Electronic insert with unequipped circuit board with 2 fork type springs and 2 flat head terminals, Standard DIN EN 175 301-803-A

Type	Order No.
GDME UV 3 N	931 954-001

Rectangular Connectors and Cables, GDM-Series, Form A

Appliance Connectors according to DIN EN 175 301-803

GSA 2000 black

Appliance connector with retaining nut, 2 screws M 3x10 and 1 screw M 3x5, longitudinal slots, open nut, 2 poles + PE, Standard DIN EN 175 301-803-A

Type	Order No.
GSA 2000 black	932 591-100

GSA 2000 A black

Appliance connector with retaining nut, without screws, longitudinal slots, closed nut, 2 poles + PE, Standard DIN EN 175 301-803-A

Type	Order No.
GSA 2000 A black	932 592-500

GSA 2000 N black

Appliance connector with retaining nut, 2 screws M 3x10 and 1 screw M 3x5, open nut, 2 poles + PE, Standard DIN EN 175 301-803-A

Type	Order No.
GSA 2000 N black	932 967-100

GSA 3000 black

Appliance connector with retaining nut, 2 screws M 3x10 and 1 screw M 3x4, longitudinal slots, open nut, 3 poles + PE, Standard DIN EN 175 301-803-A

Type	Order No.
GSA 3000 black	932 597-100

GSA 3000 A black

Appliance connector with retaining nut, without screws, longitudinal slots, closed nut, 3 poles + PE, Standard DIN EN 175 301-803-A

Type	Order No.
GSA 3000 A black	932 598-500

GSA 3000 N black

Appliance connector with retaining nut, 2 screws M 3x10 and 1 screw M 3x5, open nut, 3 poles + PE, Standard DIN EN 175 301-803-A

Type	Order No.
GSA 3000 N black	932 968-100

GSA-U 2000 N LO black

Molded appliance coupler (IP 65 unmated) with 4 cross-head screws and solder lug for flexible cables, 2 poles + PE, Standard DIN EN 175 301-803-A

Type	Order No.
GSA-U 2000 N LO black	933 378-100

Rectangular Connectors and Cables, GDM-Series, Form A

Appliance Connectors according to DIN EN 175 301-803

GSA-U 3000 N LO black

Molded appliance coupler (IP 65 unmated) with 4 cross-head screws and solder lug for flexible cables, 3 poles + PE, Standard DIN EN 175 301-803-A

Type	Order No.
GSA-U 3000 N LO black	933 379-100

GSA-U 3075 SK black

Molded appliance coupler (IP 65 unmated) with 4 cross-head screws and insulation displacement contact (without solder/screw), 3 poles + PE, Standard DIN EN 175 301-803-A

Type	Order No.
GSA-U 3075 SK black	933 381-100

GSC 300 black

Appliance connector with retaining nut, PE contact, 2 screws M 3x10 and 1 screw M 3x5, without contacts, 2 poles + PE/3 + PE, Standard DIN EN 175 301-803-A

Type	Order No.
GSC 300 black	931 382-100

GSE 2000 N4 black

Appliance connector for installation in sheet metal, rotating round collar, retaining nut and 4 screws M 3x6, 2 poles + PE, Standard DIN EN 175 301-803-A

Type	Order No.
GSE 2000 N4 black	932 886-100

GSE 3000 N4 black

Appliance connector for installation in sheet metal, rotating round collar, retaining nut and 4 screws M 3x6, 3 poles + PE, Standard DIN EN 175 301-803-A

Type	Order No.
GSE 3000 N4 black	932 890-100

GSR-U 2000 LO black

Appliance connector for injection molding (IP 65 unmated) with solder lug for flexible cables, 2 poles + PE, Standard DIN EN 175 301-803-A

Type	Order No.
GSR-U 2000 LO black	933 377-100

GSR-U 3000 LO black

Appliance connector for injection molding (IP 65 unmated) with solder lug for flexible cables, 3 poles + PE, Standard DIN EN 175 301-803-A

Type	Order No.
GSR-U 3000 LO black	933 376-100

Rectangular Connectors and Cables, GDM-Series, Form A

Appliance Connectors according to DIN EN 175 301-803

GSP 211 PG11 black

Appliance connector with thread, appliance connector, threaded sleeve, grip ring, o-ring (NBR), 2 poles + PE, screw joint for cable PG 11, Standard DIN EN 175 301-803-A

Type	Order No.
GSP 211 PG11 black	931 298-001

GSP 212 1/2" NPTF black

Appliance connector with thread, appliance connector, threaded sleeve, grip ring, o-ring (NBR), 2 poles + PE, screw joint for cable 1/2" NPTF, Standard DIN EN 175 301-803-A

Type	Order No.
GSP 212 1/2" NPTF black	931 298-004

GSP 213 PG13,5 black

Appliance connector with thread, appliance connector, threaded sleeve, grip ring, o-ring (NBR), 2 poles + PE, screw joint for cable PG 13.5, Standard DIN EN 175 301-803-A

Type	Order No.
GSP 213 PG13,5 black	931 298-003

GSP 2 M20 black

Appliance connector with thread, appliance connector, threaded sleeve, grip ring, o-ring (NBR), 2 poles + PE, screw joint for cable M20, Standard DIN EN 175 301-803-A

Type	Order No.
GSP 2 M20 black	931 298-006

GSP 311 PG11 black

Appliance connector with thread, appliance connector, threaded sleeve, grip ring, o-ring (NBR), 3 poles + PE, screw joint for cable PG 11, Standard DIN EN 175 301-803-A

Type	Order No.
GSP 311 PG11 black	931 297-001

GSP 312 1/2" NPTF black

Appliance connector with thread, appliance connector, threaded sleeve, grip ring, o-ring (NBR), 3 poles + PE, screw joint for cable 1/2" NPTF, Standard DIN EN 175 301-803-A

Type	Order No.
GSP 312 1/2" NPTF black	931 297-004

GSP 313 PG13.5 black

Appliance connector with thread, appliance connector, threaded sleeve, grip ring, o-ring (NBR), 3 poles + PE, screw joint for cable PG 13.5, Standard DIN EN 175 301-803-A

Type	Order No.
GSP 313 PG13.5 black	931 297-003

Rectangular Connectors and Cables, GDM-Series, Form A

Appliance Connectors according to DIN EN 175 301-803

GSP 316 PG16 black

Appliance connector with thread, appliance connector, threaded sleeve, grip ring, o-ring (NBR), 3 poles + PE, screw joint for cable PG 16, Standard DIN EN 175 301-803-A

Type	Order No.
GSP 316 PG16 black	931 297-002

GSP 3 M20 black

Appliance connector with thread, appliance connector, threaded sleeve, grip ring, o-ring (NBR), 3 poles + PE, screw joint for cable M20, Standard DIN EN 175 301-803-A

Type	Order No.
GSP 3 M20 black	931 297-006

GSP-U 3000

Appliance connector for injection molding (IP 65 unmated) with solder lug for flexible cables, press-in and screw mounting, 3 poles + PE, Standard DIN EN 175 301-803-A

E = with ventilation hole
Au = with gold-plated contacts

Type	Order No.
GSP-U 3000 LO SN	832 954-200
GSP-U 3000 LO AU	832 954-400
GSP-U 3000 E sw	832 954-710
GSP-U 3000 E Au sw	832 954-900

GSAZ 200 black

Appliance connector for profiled gaskets GSAZ, front connection, 1 hollow screw, 1 screw M 3x5, 2 poles + PE, Standard DIN EN 175 301-803-A

Type	Order No.
GSAZ 200 black	932 429-100

GSAZ 300 black

Appliance connector for profiled gaskets GSAZ, front connection, 1 hollow screw, 1 screw M 3x5, 3 poles + PE, Standard DIN EN 175 301-803-A

Type	Order No.
GSAZ 300 black	932 430-100

Rectangular Connectors and Cables, GDM-Series, Form B
 Valve Connectors according to DIN EN 175 301-803

VBD 1A-1-1



Valve connector
 Actuator cordset, single-ended, valve connector according to DIN EN 175 301-803, form B, with LED function indicator, varistor voltage protection

Outer jacket material:
 212 = PVC
 226 = PUR halogen-free, black

Type	Order No.
VBD 1A-1-1-212/2 M	12224
VBD 1A-1-1-212/5 M	12225
VBD 1A-1-1-212/10 M	82466
VBD 1A-1-1-226/2 M	12226
VBD 1A-1-1-226/5 M	12227
VBD 1A-1-1-226/10 M	43895

VBD 1A-1-2



Valve connector
 Actuator cordset, single-ended, valve connector according to DIN EN 175 301-803, form B, with LED function indicator, varistor voltage protection, cable exit 180°

Outer jacket material:
 212 = PVC
 226 = PUR halogen-free, black

Type	Order No.
VBD 1A-1-2-212/2 M	12234
VBD 1A-1-2-212/5 M	12235
VBD 1A-1-2-212/10 M	46937
VBD 1A-1-2-226/2 M	12236
VBD 1A-1-2-226/5 M	12237
VBD 1A-1-2-226/10 M	43897

VBD 1B-1-1



Valve connector
 Actuator cordset, single-ended, valve connector according to DIN EN 175 301-803, form B, with LED function indicator, suppression diode voltage protection

Outer jacket material:
 212 = PVC
 226 = PUR halogen-free, black

Type	Order No.
VBD 1B-1-1-212/2 M	12245
VBD 1B-1-1-212/5 M	12246
VBD 1B-1-1-212/10 M	46938
VBD 1B-1-1-226/2 M	43899
VBD 1B-1-1-226/5 M	44565
VBD 1B-1-1-226/10 M	46939

VBD 1B-1-2



Valve connector
 Actuator cordset, single-ended, valve connector according to DIN EN 175 301-803, form B, with LED function indicator, suppression diode voltage protection, cable exit 180°

Outer jacket material:
 212 = PVC
 226 = PUR halogen-free, black

Type	Order No.
VBD 1B-1-2-212/2 M	12251
VBD 1B-1-2-212/5 M	12252
VBD 1B-1-2-212/10 M	46940
VBD 1B-1-2-226/2 M	43901
VBD 1B-1-2-226/5 M	43903
VBD 1B-1-2-226/10 M	46941

VBD 1D-3-1



Valve connector
 Actuator cordset, single-ended, valve connector according to DIN EN 175 301-803, form B, without circuitry, 2 + earth connection

Outer jacket material:
 205 = PVC

Type	Order No.
VBD 1D-3-1-205/2 M	12253
VBD 1D-3-1-205/5 M	12254
VBD 1D-3-1-205/10 M	46942

VBD 1D-3-2



Valve connector
 Actuator cordset, single-ended, valve connector according to DIN EN 175 301-803, form B, without circuitry, 2 + earth connection, cable exit 180°

Outer jacket material:
 205 = PVC

Type	Order No.
VBD 1D-3-2-205/2 M	12255
VBD 1D-3-2-205/5 M	12256
VBD 1D-3-2-205/10 M	46943

Rectangular Connectors and Cables, GDM-Series, Form B

Field Attachable Rectangular Connectors according to DIN EN 175 301-803

GMN 216 NJ black

Field attachable rectangular connector, with central screw M 3x35, 2 poles + PE, screw joint for cable M16, Standard DIN EN 175 301-803-B

Type	Order No.
GMN 216 NJ black	934 457-100

GMN 209 NJ

Field attachable rectangular connector, with central screw M 3x35, 2 poles + PE, screw joint for cable PG 9, Standard DIN EN 175 301-803-B

Type	Order No.
GMN 209 NJ black	932 987-100
GMN 209 NJ grey	932 987-106

GMNL 216 NJ LED 24 HH

Field attachable rectangular connector, function indicator (LED) with protective circuit (diode), 2 poles + PE, screw joint for cable M12, Standard DIN EN 175 301-803-B

Type	Order No.
GMNL 216 NJ LED 24 HH black	934 460-002
GMNL 216 NJ LED 24 HH grey	934 460-003

GMNL 209 NJ GB1

Field attachable rectangular connector, bridge-type rectifier with varistor voltage protection, 2 poles + PE, screw joint for cable PG 9, Standard DIN EN 175 301-803-B

Type	Order No.
GMNL 209 NJ GB1 black	933 399-100
GMNL 209 NJ GB1 grey	933 399-106

GMNL 209 NJ GB1 LED 24 black

Field attachable rectangular connector, bridge-type rectifier with varistor voltage protection and function indicator (LED), 2 poles + PE, screw joint for cable PG 9 (black), Standard DIN EN 175 301-803-B

Type	Order No.
GMNL 209 NJ GB1 LED 24 black	933 400-100

GMNL 209 NJ LED 24 HH

Field attachable rectangular connector, function indicator (LED) with protective circuit (diode), 2 poles + PE, screw joint for cable PG 9 (black), Standard DIN EN 175 301-803-B

Type	Order No.
GMNL 209 NJ LED 24 HH black	933 388-100
GMNL 209 NJ LED 24 HH grey	933 388-106

GMNL 209 NJ LED 24 YE black

Field attachable rectangular connector, function indicator (LED) with recovery diode, 2 poles + PE, screw joint for cable PG 9 (black), Standard DIN EN 175 301-803-B

Type	Order No.
GMNL 209 NJ LED 24 YE black	933 572-100

Rectangular Connectors and Cables, GDM-Series, Form B

Field Attachable Rectangular Connectors, Appliance Connectors according to DIN EN 175 301-803, Valve Connector Cordsets, Single-ended, Industry Standard

GMNL 209 NJ LED 120 YE black



Field attachable rectangular connector, function indicator (LED) with recovery diode, 2 poles + PE, screw joint for cable PG 9 (black), Standard DIN EN 175 301-803-B

Type	Order No.
GMNL 209 NJ LED 120 YE black	933 714-100

GMNL 209 NJ LED 230 YE



Field attachable rectangular connector, function indicator (LED) with recovery diode, 2 poles + PE, screw joint for cable PG 9, Standard DIN EN 175 301-803-B

Type	Order No.
GMNL 209 NJ LED 230 YE black	933 715-100
GMNL 209 NJ LED 230 YE grey	933 715-106

GSN 20 black



Appliance connector with central screws (hollow), 1 screw M 3x4, 2 poles + PE, Standard DIN EN 175 301-803-B

Type	Order No.
GSN 20 black	932 421-100

VB 1A-1-1



Valve connector
 Actuator cordset, single-ended, valve connector similar to DIN EN 175 301-803, industry standard form B, with LED function indicator, varistor voltage protection
 Outer jacket material:
 212 = PVC
 226 = PUR halogen-free, black

Type	Order No.
VB 1A-1-1-212/2 M	12189
VB 1A-1-1-212/5 M	12190
VB 1A-1-1-212/10 M	26742
VB 1A-1-1-226/2 M	43846
VB 1A-1-1-226/5 M	43848
VB 1A-1-1-226/10 M	43845

VB 1A-1-2



Valve connector
 Actuator cordset, single-ended, valve connector similar to DIN EN 175 301-803, industry standard form B, with LED function indicator, varistor voltage protection, cable exit 180°
 Outer jacket material:
 212 = PVC
 226 = PUR halogen-free, black

Type	Order No.
VB 1A-1-2-212/2 M	12196
VB 1A-1-2-212/5 M	12197
VB 1A-1-2-212/10 M	46929
VB 1A-1-2-226/2 M	43889
VB 1A-1-2-226/5 M	43891
VB 1A-1-2-226/10 M	46930

VB 1B-1-1



Valve connector
 Actuator cordset, single-ended, valve connector similar to DIN EN 175 301-803, industry standard form B, with LED function indicator, suppression diode voltage protection
 Outer jacket material:
 212 = PVC
 226 = PUR halogen-free, black

Type	Order No.
VB 1B-1-1-212/2 M	12205
VB 1B-1-1-212/5 M	12206
VB 1B-1-1-212/10 M	46931
VB 1B-1-1-226/2 M	16080
VB 1B-1-1-226/5 M	44674
VB 1B-1-1-226/10 M	46932

VB 1B-1-2



Valve connector
 Actuator cordset, single-ended, valve connector similar to DIN EN 175 301-803, industry standard form B, with LED function indicator, suppression diode voltage protection, cable exit 180°
 Outer jacket material:
 212 = PVC
 226 = PUR halogen-free, black

Type	Order No.
VB 1B-1-2-212/2 M	12211
VB 1B-1-2-212/5 M	12212
VB 1B-1-2-212/10 M	46933
VB 1B-1-2-226/2 M	16081
VB 1B-1-2-226/5 M	44400
VB 1B-1-2-226/10 M	46934

Rectangular Connectors and Cables, GDM-Series, Form B

Valve Connector Cordsets, Field Attachable Rectangular Connectors, Industry Standard

VB 1D-3-1**Valve connector**

Actuator cordset, single-ended, valve connector similar to DIN EN 175301-803, industry standard form B, without circuitry, 2 + earth connection

Outer jacket material:
205 = PVC

Type	Order No.
VB 1D-3-1-205/2 M	12213
VB 1D-3-1-205/5 M	12214
VB 1D-3-1-205/10 M	46935

VB 1D-3-2**Valve connector**

Actuator cordset, single-ended, valve connector similar to DIN EN 175301-803, industry standard form B, without circuitry, 2 + earth connection, cable exit 180°

Outer jacket material:
205 = PVC

Type	Order No.
VB 1D-3-2-205/2 M	12215
VB 1D-3-2-205/5 M	12216
VB 1D-3-2-205/10 M	46936

GM 209 NJ

Field attachable rectangular connector, with central screw M 3x35, 2 poles + PE, screw joint for cable PG 9, industry standard (11 mm)

Type	Order No.
GM 209 NJ black	932 977-100
GM 209 NJ grey	932 977-106

GM 216 NJ

Field attachable rectangular connector, with central screw M 3x35, 2 poles + PE, screw joint for cable M16, industry standard (11 mm)

Type	Order No.
GM 216 NJ black	934 456-100
GM 216 NJ grey	934 456-106

GML 216 NJ LED 24 HH

Field attachable rectangular connector, function indicator (LED) with protective circuit (diode), 2 poles + PE, screw joint for cable M16, industry standard (11 mm)

Type	Order No.
GML 216 NJ LED 24 HH black	934 458-002
GML 216 NJ LED 24 HH grey	934 458-003

GML 216 NJ LED 24 VR YE

Field attachable rectangular connector, function indicator (LED) with recovery diode and varistor voltage protection, 2 poles + PE, screw joint for cable M16, industry standard (11 mm)

Type	Order No.
GML 216 NJ LED 24 VR YE black	934 459-002
GML 216 NJ LED 24 VR YE grey	934 459-003

GML 209 NJ GB1

Field attachable rectangular connector, bridge-type rectifier with varistor voltage protection, 2 poles + PE, screw joint for cable PG 9, industry standard (11 mm)

Type	Order No.
GML 209 NJ GB1 black	933 398-100
GML 209 NJ GB1 grey	933 398-106

Rectangular Connectors and Cables, GDM-Series, Form B

Field Attachable Rectangular Connectors, Industry Standard

GML 209 NJ GB1 LED 24

Field attachable rectangular connector, bridge-type rectifier with varistor voltage protection and function indicator (LED), 2 poles + PE, screw joint for cable PG 9, industry standard (11 mm)

Type	Order No.
GML 209 NJ GB1 LED 24 black	933 642-100
GML 209 NJ GB1 LED 24 grey	933 642-106

GML 209 NJ LED 24 HH

Field attachable rectangular connector, function indicator (LED) with protective circuit (diode), 2 poles + PE, screw joint for cable PG 9, industry standard (11 mm)

Type	Order No.
GML 209 NJ LED 24 HH black	933 389-100
GML 209 NJ LED 24 HH grey	933 389-106

GML 209 NJ LED 24 YE

Field attachable rectangular connector, function indicator (LED yellow) with recovery diode, 2 poles + PE, screw joint for cable PG 9, industry standard (11 mm)

Type	Order No.
GML 209 NJ LED 24 YE black	933 571-100
GML 209 NJ LED 24 YE grey	933 571-106

GML 209 NJ LED 24

Field attachable rectangular connector, function indicator (LED red) with recovery diode, 2 poles + PE, screw joint for cable PG 9, industry standard (11 mm)

Type	Order No.
GML 209 NJ LED 24 black	933 928-100
GML 209 NJ LED 24 grey	933 928-106

GML 209 NJ LED 24 VR YE

Field attachable rectangular connector, function indicator (LED yellow) with recovery diode and varistor voltage protection, 2 poles + PE, screw joint for cable PG 9, industry standard (11 mm)

Type	Order No.
GML 209 NJ LED 24 VR YE black	933 929-100
GML 209 NJ LED 24 VR YE grey	933 929-106

GML 209 NJ LED 120 YE

Field attachable rectangular connector, function indicator (LED yellow) with recovery diode, 2 poles + PE, screw joint for cable PG 9, industry standard (11 mm)

Type	Order No.
GML 209 NJ LED 120 YE black	933 712-100
GML 209 NJ LED 120 YE grey	933 712-106

GML 209 NJ LED 120 VR YE black

Field attachable rectangular connector, function indicator (LED yellow) with recovery diode and varistor voltage protection, 2 poles + PE, screw joint for cable PG 9 (black), industry standard (11 mm)

Type	Order No.
GML 209 NJ LED 120 VR YE black	933 934-100

Rectangular Connectors and Cables, GDM-Series, Form B
 Field Attachable Rectangular Connectors, Valve Connectors, Industry Standard

GML 209 NJ LED 230 YE



Field attachable rectangular connector, function indicator (LED yellow) with recovery diode, 2 poles + PE, screw joint for cable PG 9, industry standard (11 mm)

Type	Order No.
GML 209 NJ LED 230 YE black	933 713-100
GML 209 NJ LED 230 YE grey	933 713-106

GML 209 NJ LED 230 black



Field attachable rectangular connector, function indicator (LED red) with recovery diode, 2 poles + PE, screw joint for cable PG 9 (black), industry standard (11 mm)

Type	Order No.
GML 209 NJ LED 230 black	933 931-100

GML 209 NJ LED 230 VR YE



Field attachable rectangular connector, function indicator (LED yellow) with recovery diode and varistor voltage protection, 2 poles + PE, screw joint for cable PG 9, industry standard (11 mm)

Type	Order No.
GML 209 NJ LED 230 VR YE black	933 932-100
GML 209 NJ LED 230 VR YE grey	933 932-106

GML 209 NJ GB1 LED 230



Field attachable rectangular connector, bridge-type rectifier with varistor voltage protection and function indicator (LED), 2 poles + PE, screw joint for cable PG 9, industry standard (11 mm)

Type	Order No.
GML 209 NJ GB1 LED 230 black	933 933-100
GML 209 NJ GB1 LED 230 grey	933 933-106

GSA 20 black



Appliance connector with central screws (hollow), 1 screw M 3x4, 2 poles + PE, industry standard (11 mm)

Type	Order No.
GSA 20 black	931 352-100

VCD 1A-1-3



Valve connector

Actuator cordset, single-ended, valve connector according to DIN EN 175 301-803, form C (8.0 mm), with LED function indicator, varistor voltage protection, connected protective earth

Outer jacket material:

- 212 = PVC
- 226 = PUR halogen-free, black
- 241 = PUR halogen-free, black, welding spark proof

Type	Order No.
VCD 1A-1-3-212/2 M	12274
VCD 1A-1-3-212/5 M	12275
VCD 1A-1-3-212/10 M	43445
VCD 1A-1-3-226/2 M	12276
VCD 1A-1-3-226/5 M	12277
VCD 1A-1-3-226/10 M	43911
VCD 1A-1-3-241/2 M	12279
VCD 1A-1-3-241/5 M	12280
VCD 1A-1-3-241/10 M	18063

Rectangular Connectors and Cables, GDM-Series, Form C

Valve Connector Cordsets, Field Attachable Rectangular Connectors, Appliance Connectors according to DIN EN 175 301-803

VCD 1D-3-3



Valve connector

Actuator cordset, single-ended, valve connector according to DIN EN 175 301-803, form C (8.0 mm), without circuitry, 2 + earth connection, connected protective earth

Outer jacket material:
212 = PVC

Type	Order No.
VCD 1D-3-3-212/2 M	12281
VCD 1D-3-3-212/5 M	12282
VCD 1D-3-3-212/10 M	39149

GDSN 207



Field attachable rectangular connector, with central screw M 2.5x27, 2 poles + PE, screw joint for cable PG 7, Standard DIN EN 175 301-803-C

Type	Order No.
GDSN 207 black	933 137-100
GDSN 207 grey	933 137-106

GDSN 307



Field attachable rectangular connector, with central screw M 2.5x27, 3 poles + PE, screw joint for cable PG 7, Standard DIN EN 175 301-803-C

Type	Order No.
GDSN 307 black	933 023-100
GDSN 307 grey	933 023-106

GSSNA 200 black



Appliance connector with central nut and 2 screws M 2.5x8, 2 poles + PE, Standard DIN EN 175 301-803-C

Type	Order No.
GSSNA 200 black	933 110-100

GSSNA 300 black



Appliance connector with central nut and 2 screws M 2.5x8, 3 poles + PE, Standard DIN EN 175 301-803-C

Type	Order No.
GSSNA 300 black	933 111-100

GSSNR 200 black



Appliance connector with central nut, version for molding or gasket, 2 poles + PE, Standard DIN EN 175 301-803-C

Type	Order No.
GSSNR 200 black	933 113-100

GSSNR 300 black



Appliance connector with central nut, version for molding or gasket, 3 poles + PE, Standard DIN EN 175 301-803-C

Type	Order No.
GSSNR 300 black	933 112-100

Rectangular Connectors and Cables, GDM-Series, Form C

Valve Connector Cordsets – Single-ended, Field Attachable Rectangular Connectors, Appliance Connectors, Industry Standard

VC 1A-1-3**Valve connector**

Actuator cordset, single-ended, valve connector similar to DIN EN 175 301-803, industry standard form C (9.4 mm), with LED function indicator, varistor voltage protection, connected protective earth

Outer jacket material:

212 = PVC
226 = PUR halogen-free, black

Type**Order No.**

VC 1A-1-3-212/2 M	12263
VC 1A-1-3-212/5 M	12264
VC 1A-1-3-212/10 M	46944
VC 1A-1-3-226/2 M	43906
VC 1A-1-3-226/5 M	43909
VC 1A-1-3-226/10 M	43905

VC 1D-3-3**Valve connector**

Actuator cordset, single-ended, valve connector similar to DIN EN 175 301-803, industry standard form C (9.4 mm), without circuitry, 2 + earth connection, connected protective earth

Outer jacket material:

212 = PVC

Type**Order No.**

VC 1D-3-3-212/2 M	12265
VC 1D-3-3-212/5 M	12266
VC 1D-3-3-212/10 M	16217

GDS 207

Field attachable rectangular connector, with central screw M 3x28, 2 poles + PE, screw joint for cable PG 7, industry standard (9.4 mm)

Type**Order No.**

GDS 207 black	933 138-100
GDS 207 grey	933 138-106

GDS 307

Field attachable rectangular connector, with central screw M 3x28, 3 poles + PE, screw joint for cable PG 7, industry standard (9.4 mm)

Type**Order No.**

GDS 307 black	933 024-100
GDS 307 grey	933 024-106

GSSA 200 black

Appliance connector with central nut and 2 screws M 3x8, 2 poles + PE, industry standard (9.4 mm)

Type**Order No.**

GSSA 200 black	933 117-100
----------------	-------------

GSSA 300 black

Appliance connector with central nut and 2 screws M 3x8, 3 poles + PE, industry standard (9.4 mm)

Type**Order No.**

GSSA 300 black	933 116-100
----------------	-------------

GSSR 200 black

Appliance connector with central nut, version for molding or gasket, 2 poles + PE, industry standard (9.4 mm)

Type**Order No.**

GSSR 200 black	933 115-100
----------------	-------------

GSSR 300 black

Appliance connector with central nut, version for molding or gasket, 3 poles + PE, industry standard (9.4 mm)

Type**Order No.**

GSSR 300 black	933 114-100
----------------	-------------

Accessories: Rectangular Connectors and Cables, GDM-Series
Crimp-Tools, Gaskets, Central Screws

RMC 480 | RMCB 480



Engaging crimp contact (blade contact), suitable for GSC-series connectors

Conductor size: 0.5 to 1.5 mm² (B crimps)

RMC 480: Packing unit 100 pieces
RMCB 480: Packing unit 3000 pieces coiled

Type	Order No.
RMC 480	731 470-021
RMCB 480	731 468-001

XZC 0702



Crimping tool for GDM-series and G-series contacts, color: red

Conductor size for contacts:
RMC 280, 0.5 mm² to 1 mm², Profile I
Order No.: 731 991-021;
RMC 480, 0.5 mm² to 1.5 mm², Profile II
Order No.: 731 470-021

Type	Order No.
XZC 0702	932 507-003

GDM 3-7 NBR light brown | GDM 3-17 VMQ red | GDM 3-21 EPDM



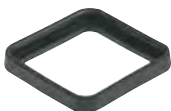
Flat gasket for rectangular connectors of the GDM-series (form A)

NBR: -30°C to +90°C
VMQ (silicone): -40°C to +125°C
EPDM (PWIS-free): -40°C to +125°C

Packing unit 50 pieces

Type	Order No.
GDM 3-7 NBR light brown	730 801-002
GDM 3-17 VMQ red	731 740-002
GDM 3-21 EPDM brown	731 739-004

GDM 3-16 NBR black | GDM 3-19 VMQ coral red



Profiled gasket for rectangular connectors of the GDM-series (form A)

NBR: -30°C to +90°C
VMQ (silicone): -40°C to +125°C

Packing unit 50 pieces

Type	Order No.
GDM 3-16 NBR black	731 531-002
GDM 3-19 VMQ coral red	731 532-002

GSE 2000-2 NBR light brown | GSE 2000-3 EPDM



Flat gasket for appliance connectors GSE-series (form A)

NBR: -30°C to +90°C
EPDM (silicone-free): -40°C to +125°C

Packing unit 50 pieces

Type	Order No.
GSE 2000-2 NBR light brown	733 973-002
GSE 2000-3 EPDM	733 846-003

GSAZ 35/43 NBR black | GSAZ 40/62 NBR black | GSAZ 60/120 NBR black



Profiled gasket for:
- 35 mm to 43 mm diameter
- 40 mm to 62 mm diameter
- 60 mm to 120 mm diameter (form A)

NBR: -30°C to +90°C

Packing unit 50 pieces

Type	Order No.
GSAZ 35/43 NBR black	733 262-002
GSAZ 40/62 NBR black	733 264-002
GSAZ 60/120 NBR black	733 266-002

SHK 03



Protection cap for appliance connectors according to DIN EN 175 301-803-A

Packing unit 50 pieces

Type	Order No.
SHK 03	733 790-002

Accessories: Rectangular Connectors and Cables, GDM-Series

Gaskets, Central Screws

MESAP 43650

Measuring adapter for measurement with 4 mm measuring leads on connectors and female connectors according to DIN EN 175 301-803-A (e.g. Hirschmann™ GDM-series), including short circuit bridge

Type	Order No.
MESAP 43650	932 818-002

GDM 3011-8 | GDM 3011 RF-1 | GDME 3 N-7

GDM 3011-8: central screw M 3x35 with knurled head for GDM-/GM-series

GDM 3011 RF-1: stainless steel central screw M 3x35 with Phillips combo head for series GDM.../GM...

GDME 3 N-7: central screw M 3x40 with knurled head for series GDME...

Packing unit 50 pieces

Type	Order No.
GDM 3011-8	732 574-001
GDM 3011 RF-1	734 363-001
GDME 3 N-7	732 280-001

GMN 209-3 NBR light brown | GMN 209-12 EPDM

Flat gasket for cable socket GMN-series (form B)

NBR: -30°C to +90°C
EPDM (silicone-free): -40°C to +125°C

Packing unit 50 pieces

Type	Order No.
GMN 209-3 NBR light brown	733 273-002
GMN 209-12 EPDM brown	733 271-004

GM 207-3 NBR light brown | GM 207-7 EPDM

Flat gasket for cable socket GM-series (form B)

NBR: -30°C to +90°C
EPDM (silicone-free): -40°C to +125°C

Packing unit 50 pieces

Type	Order No.
GM 207-3 NBR light brown	731 423-002
GM 207-7 EPDM brown	731 755-004

GSA 20-3 NBR light brown | GSA 20-9 EPDM

Flat gasket for appliance connector GSA 20 (form B)

NBR: -30°C to +90°C
EPDM (silicone-free): -40°C to +125°C

Packing unit 50 pieces

Type	Order No.
GSA 20-3 NBR light brown	731 490-002
GSA 20-9 EPDM brown	734 033-003

GSN 20-3 NBR light brown | GSN 20-6 EPDM

Flat gasket for appliance connector GSN 20 (form B)

NBR: -30°C to +90°C
EPDM (silicone-free): -40°C to +125°C

Packing unit 50 pieces

Type	Order No.
GSN 20-3 NBR light brown	733 275-002
GSN 20-6 EPDM brown	733 270-004

Accessories: Rectangular Connectors and Cables, GDM-Series

Gaskets

GDSN 307-4 NBR light brown | GDSN 307-5 EPDM



Flat gasket for cable socket GDSN-series (form C)

NBR: -30°C to +90°C
EPDM (silicone-free): -40°C to +125°C

Packing unit 50 pieces

Type	Order No.
GDSN 307-4 NBR light brown	730 176-002
GDSN 307-5 EPDM brown	730 310-003

GDS 307-2 NBR light brown | GDS 307-4 EPDM



Flat gasket for cable socket GDS-series (form C)

NBR: -30°C to +90°C
EPDM (silicone-free): -40°C to +125°C

Packing unit 50 pieces

Type	Order No.
GDS 307-2 NBR light brown	730 185-002
GDS 307-4 EPDM brown	730 314-003

GSSA 300-5 NBR light brown | GSSA 300-6 EPDM



Flat gasket for appliance connector GSSA-series (form C)

NBR: -30°C to +90°C
EPDM (silicone-free): -40°C to +125°C

Packing unit 50 pieces

Type	Order No.
GSSA 300-5 NBR light brown	730 233-002
GSSA 300-6 EPDM brown	730 312-003

GSSNA 300-5 NBR light brown | GSSNA 300-6 EPDM



Flat gasket for appliance connector GSSNA-series (form C)

NBR: -30°C to +90°C
EPDM (silicone-free): -40°C to +125°C

Packing unit 50 pieces

Type	Order No.
GSSNA 300-5 NBR light brown	730 232-002
GSSNA 300-6 EPDM	730 365-004

GM 207-3 NBR light brown | GSA 200-7 EPDM



Flat gasket for appliance connector GSA-series (form A)

NBR: -30°C to +90°C
EPDM (silicone-free): -40°C to +125°C

Packing unit 50 pieces

Type	Order No.
GSA 200-4 NBR light brown	730 843-002
GSA 200-7 EPDM brown	730 268-003