

● General Description

The AGM25T16AT combines advanced trench MOSFET technology with a low resistance package to provide extremely low $R_{DS(ON)}$.

This device is ideal for load switch and battery protection applications.

● Features

- Advance high cell density Trench technology
- Low $R_{DS(ON)}$ to minimize conductive loss
- Low Gate Charge for fast switching
- Low Thermal resistance
- 100% Avalanche tested
- 100% DVDS tested

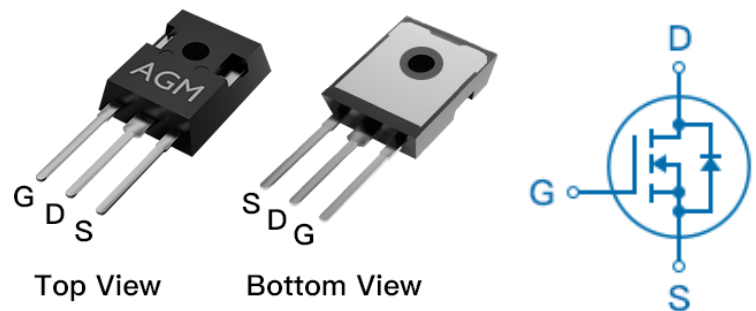
● Application

- MB/VGA Vcore
- SMPS 2nd Synchronous Rectifier
- POL application
- BLDC Motor driver

Product Summary

BVDSS	RDSON	ID
250V	16mΩ	90A

TO-247 Pin Configuration



Package Marking and Ordering Information

Device Marking	Device	Device Package	Reel Size	Tape width	Quantity
AGM25T16AT	AGM25T16AT	TO-247	---	---	600

Table 1. Absolute Maximum Ratings (TA=25°C)

Symbol	Parameter	Value	Unit
VDS	Drain-Source Voltage (VGS=0V)	250	V
VGS	Gate-Source Voltage (VDS=0V)	±20	V
ID	Drain Current-Continuous(Tc=25°C) (Note 1)	90	A
	Drain Current-Continuous(Tc=100°C)	63.6	A
IDM (pluse)	Drain Current-Pulsed (Note 2)	360	A
PD	Maximum Power Dissipation(Tc=25°C)	278	w
EAS	Avalanche energy (Note 3)	1152	mJ
TJ,TSTG	Operating Junction and Storage Temperature Range	-55 To 175	°C

Table 2. Thermal Characteristic

Symbol	Parameter	Typ	Max	Unit
RθJC	Thermal Resistance Junction-Case ¹	---	0.45	°C/W

Table 3. Electrical Characteristics (T_J=25°C unless otherwise noted)

Symbol	Parameter	Conditions	Min	Typ	Max	Unit
On/Off States						
BVDSS	Drain-Source Breakdown Voltage	VGS=0V ID=250μA	250	--	--	V
IDSS	Zero Gate Voltage Drain Current	VDS=250V,VGS=0V	--	--	1	μA
IGSS	Gate-Body Leakage Current	VGS=±20V,VDS=0V	--	--	±100	nA
VGS(th)	Gate Threshold Voltage	VDS=VGS,ID=250μA	2.5	--	4.5	V
gFS	Forward Transconductance	VDS=5V,ID=20A	70	--	--	S
RDS(on)	Drain-Source On-State Resistance	VGS=10V, ID=45A	--	16	20	mΩ
Dynamic Characteristics						
Ciss	Input Capacitance	VDS=125V,VGS=0V, F=1MHZ	--	6595	--	pF
Coss	Output Capacitance		--	410	--	pF
Crss	Reverse Transfer Capacitance		--	11	--	pF
Rg	Gate resistance	VGS=0V, VDS=0V,f=1.0MHz	--	1.0	--	Ω
Switching Times						
td(on)	Turn-on Delay Time	VGS=10V,VDS=125V, ID=45A, RGEN=4.7Ω	--	9.5	--	nS
tr	Turn-on Rise Time		--	28	--	nS
td(off)	Turn-Off Delay Time		--	48	--	nS
tf	Turn-Off Fall Time		--	15	--	nS
Qg	Total Gate Charge	VGS=10V, VDS=125V, ID=45A	--	94	--	nC
Qgs	Gate-Source Charge		--	40	--	nC
Qgd	Gate-Drain Charge		--	18	--	nC
Source-Drain Diode Characteristics						
ISD	Source-Drain Current(Body Diode)		--	--	90	A
VSD	Forward on Voltage	VGS=0V,IS=20A	--	--	1.2	V
trr	Reverse Recovery Time	IF=40A ,dI/dt=100A/μs , T _J =25°C	--	267	--	ns
Qrr	Reverse Recovery Charge		--	765	--	nc

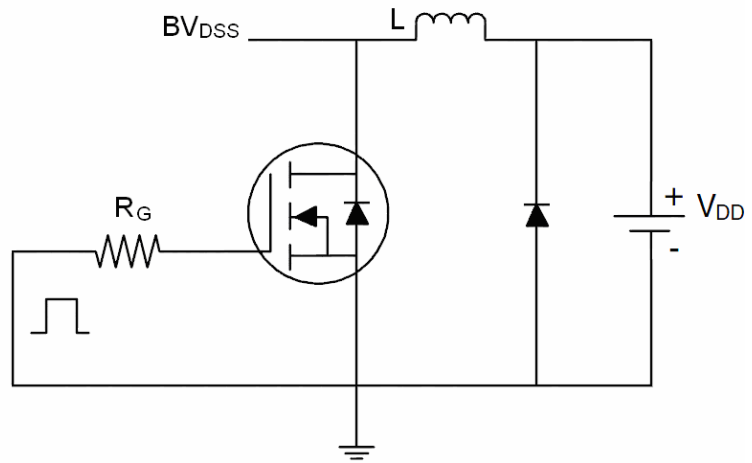
Notes 1.The maximum current rating is package limited.

Notes 2.Repetitive Rating: Pulse width limited by maximum junction temperature

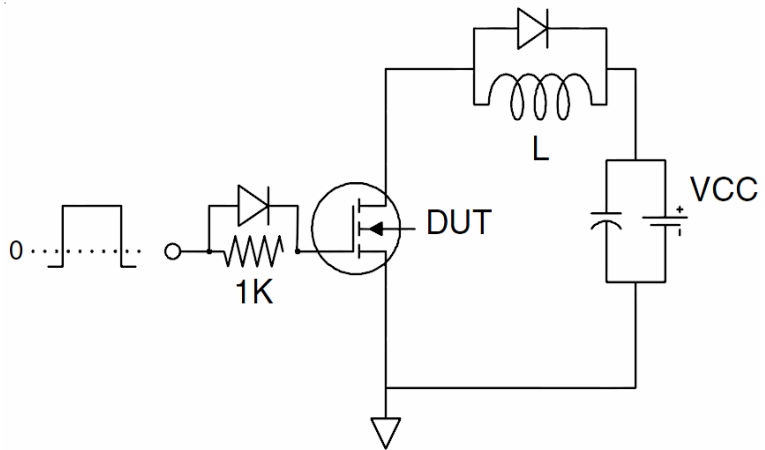
Notes 3.EAS condition: T_J=25°C,VDD=50V,Vgs=10V,ID=48A, L=1mH,RG=25ohm

Test Circuit

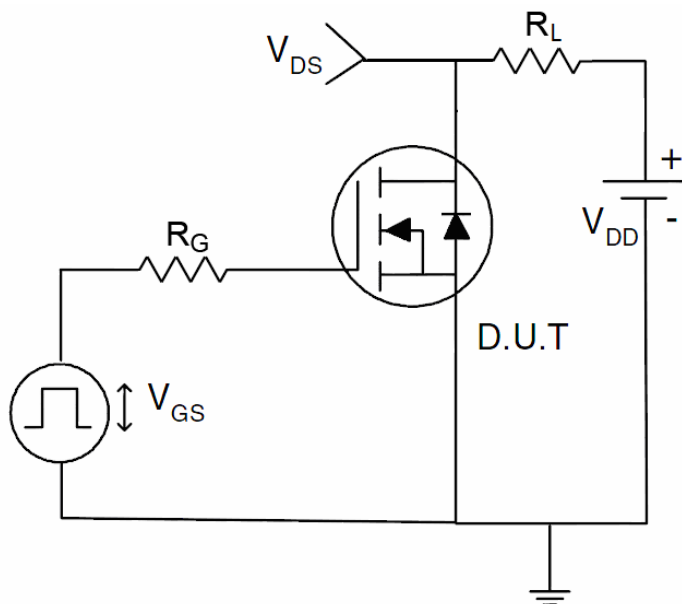
1) E_{AS} test Circuit



2) Gate charge test Circuit



3) Switch Time Test Circuit



Typical Electrical and Thermal Characteristics

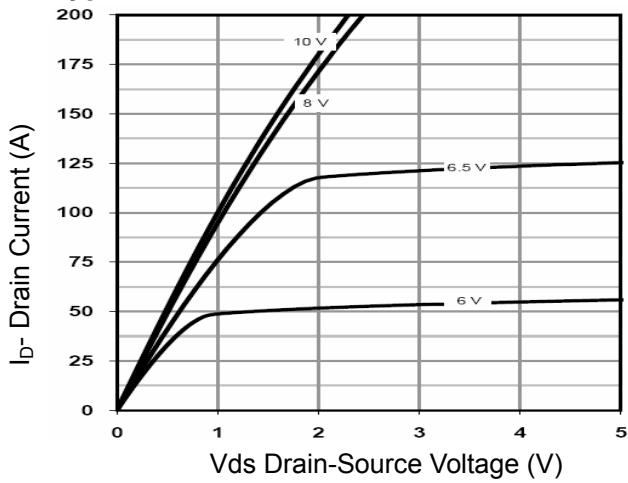


Figure 1 Output Characteristics

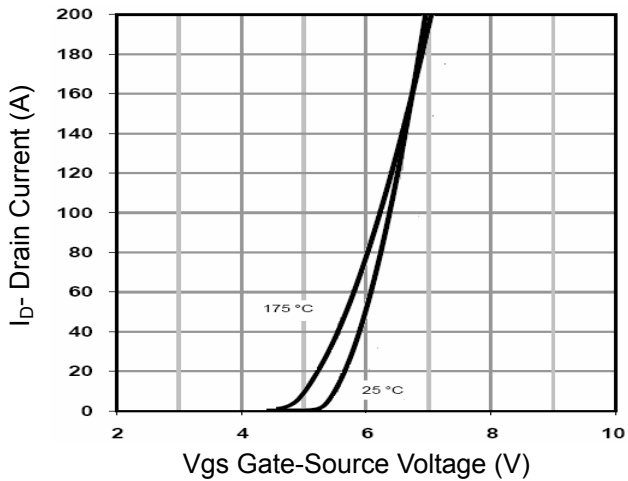


Figure 2 Transfer Characteristics

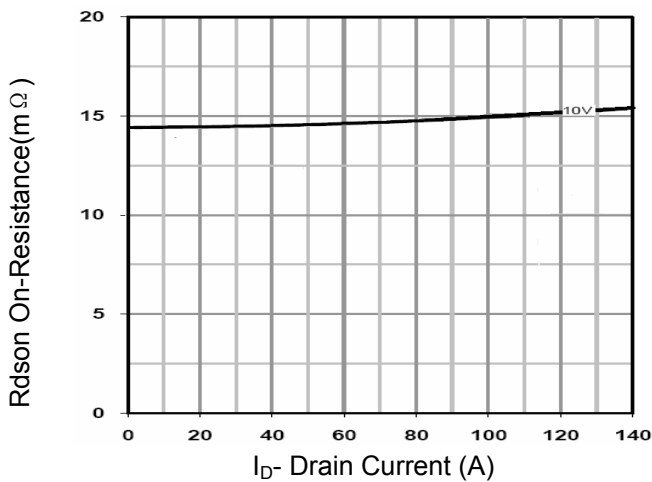


Figure 3 Rdson- Drain Current

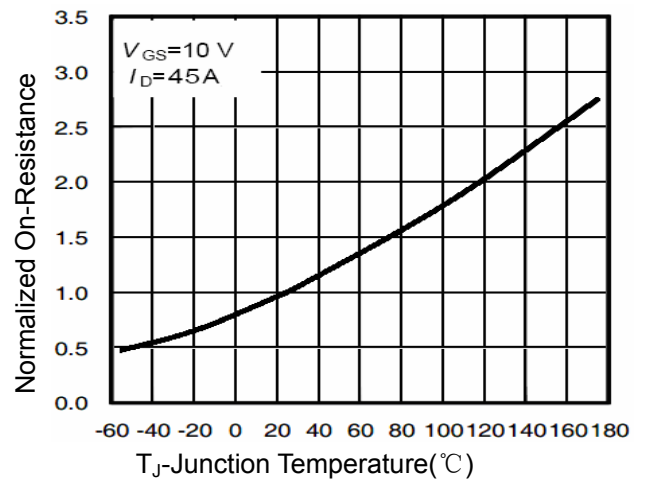


Figure 4 Rdson-Junction Temperature

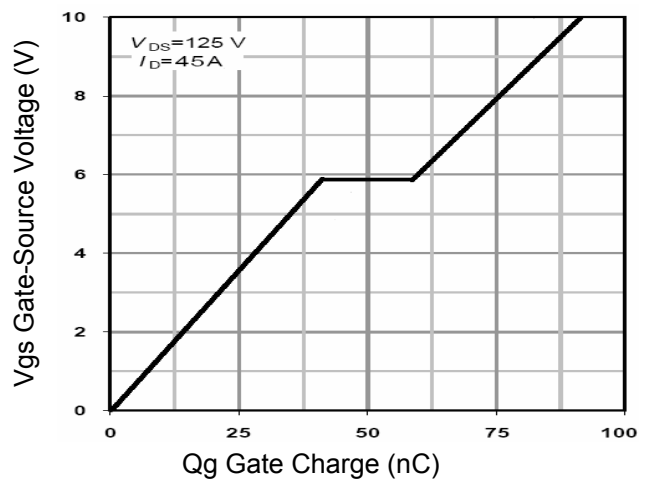


Figure 5 Gate Charge

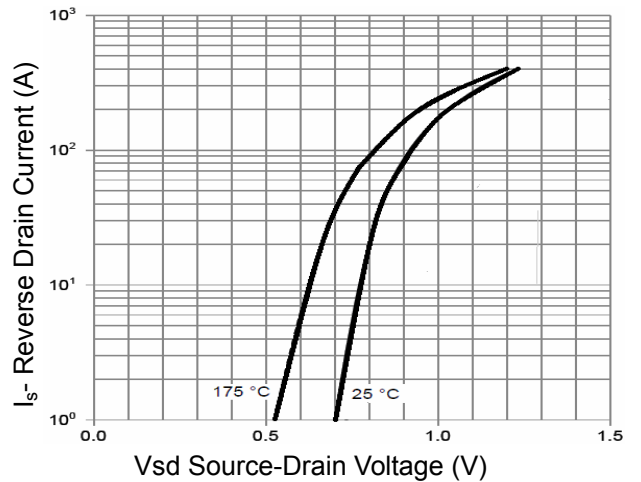


Figure 6 Source- Drain Diode Forward

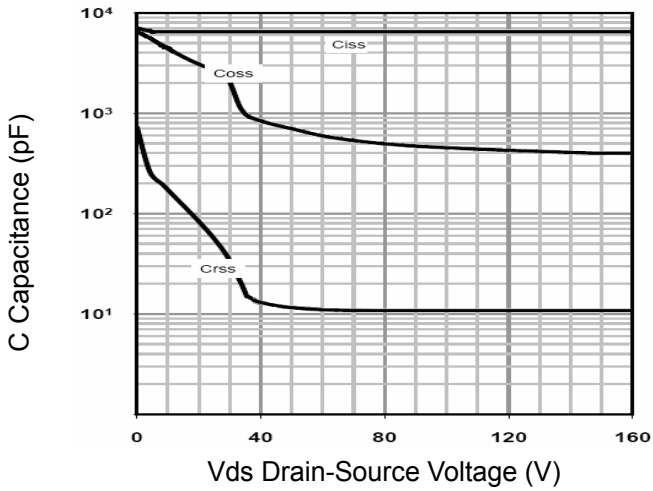


Figure 7 Capacitance vs Vds

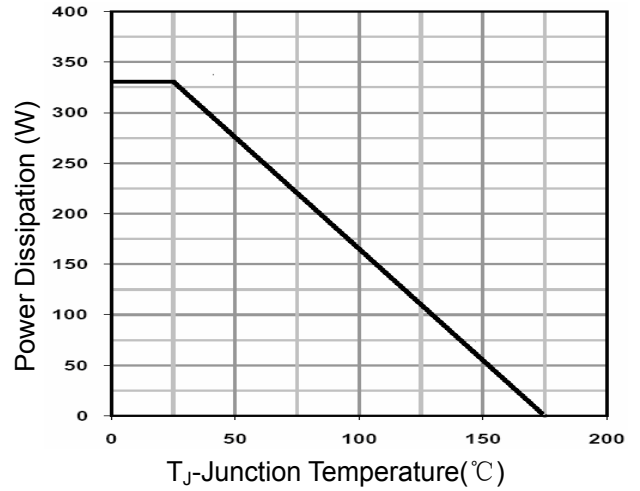


Figure 9 Power De-rating

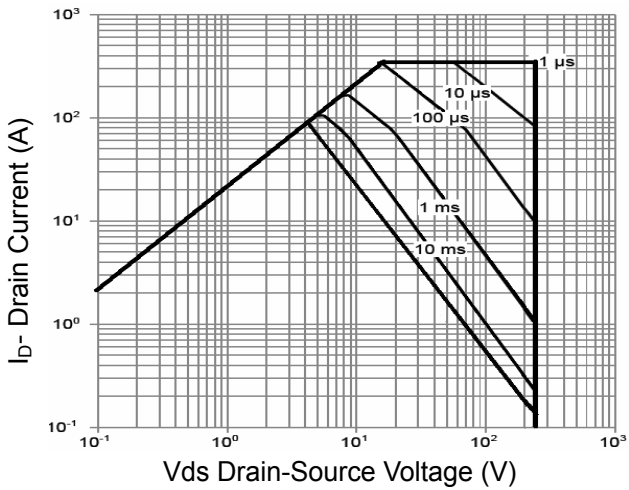


Figure 8 Safe Operation Area

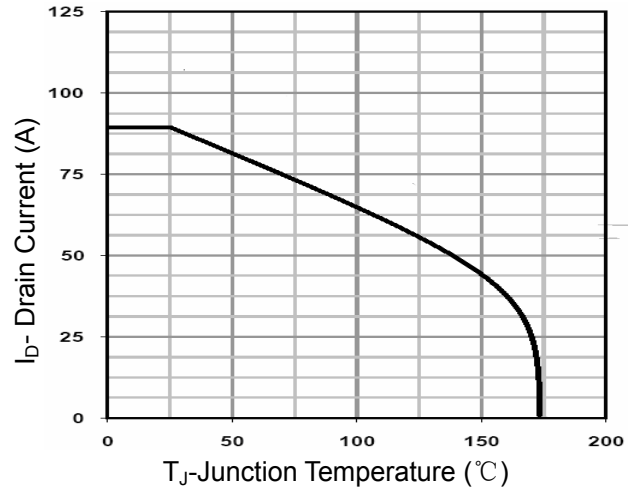


Figure 10 Current De-rating

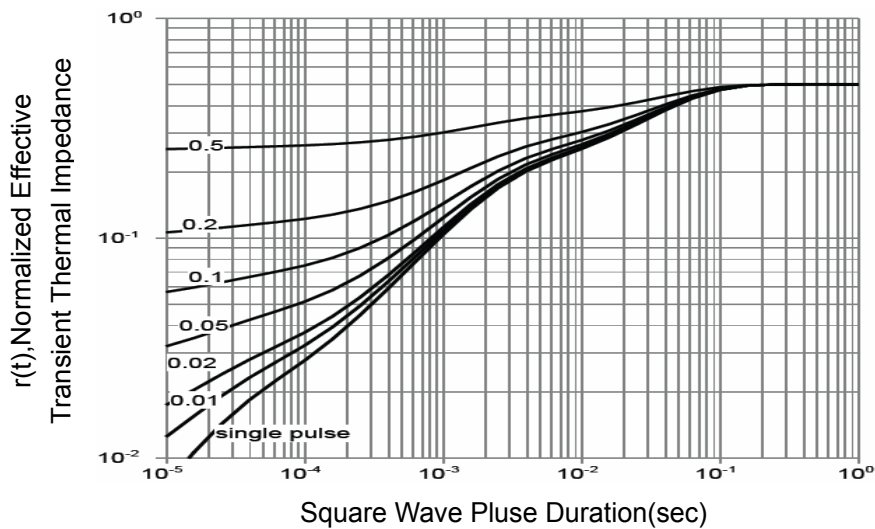
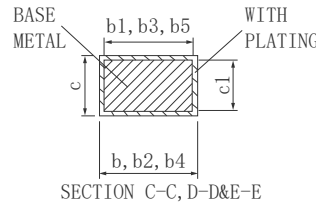
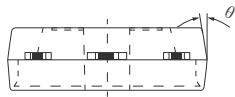
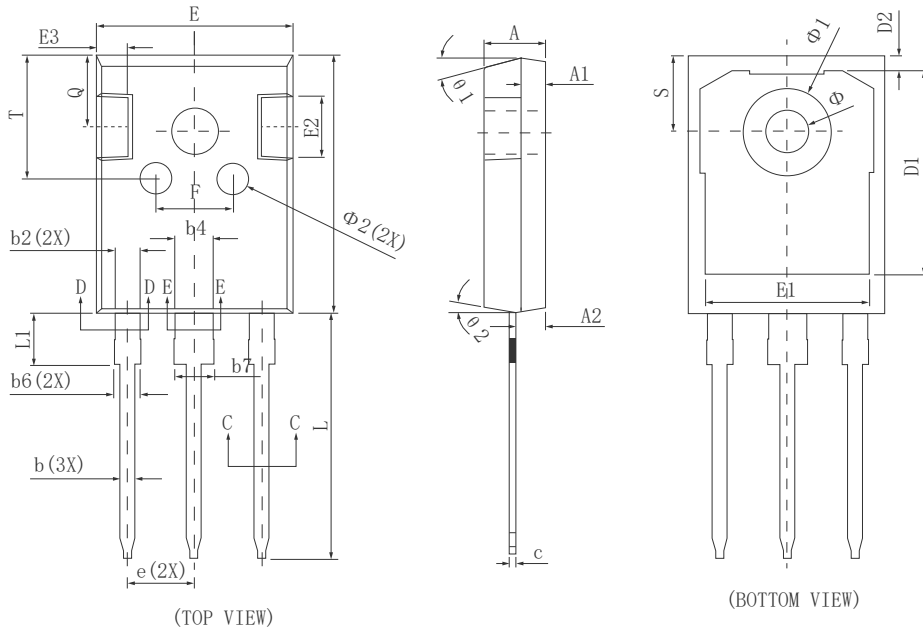
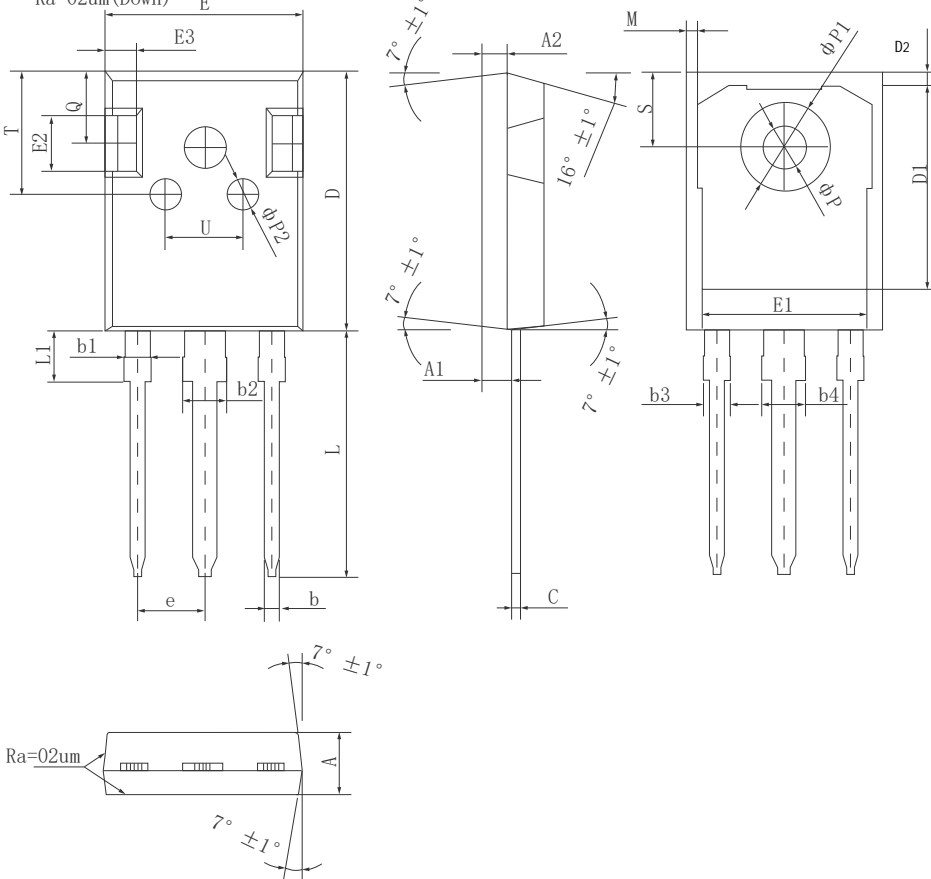


Figure 11 Normalized Maximum Transient Thermal Impedance

•Dimensions (TO-247)


Ra=0.8-1.0um(Top)

Ra=02um(Down)



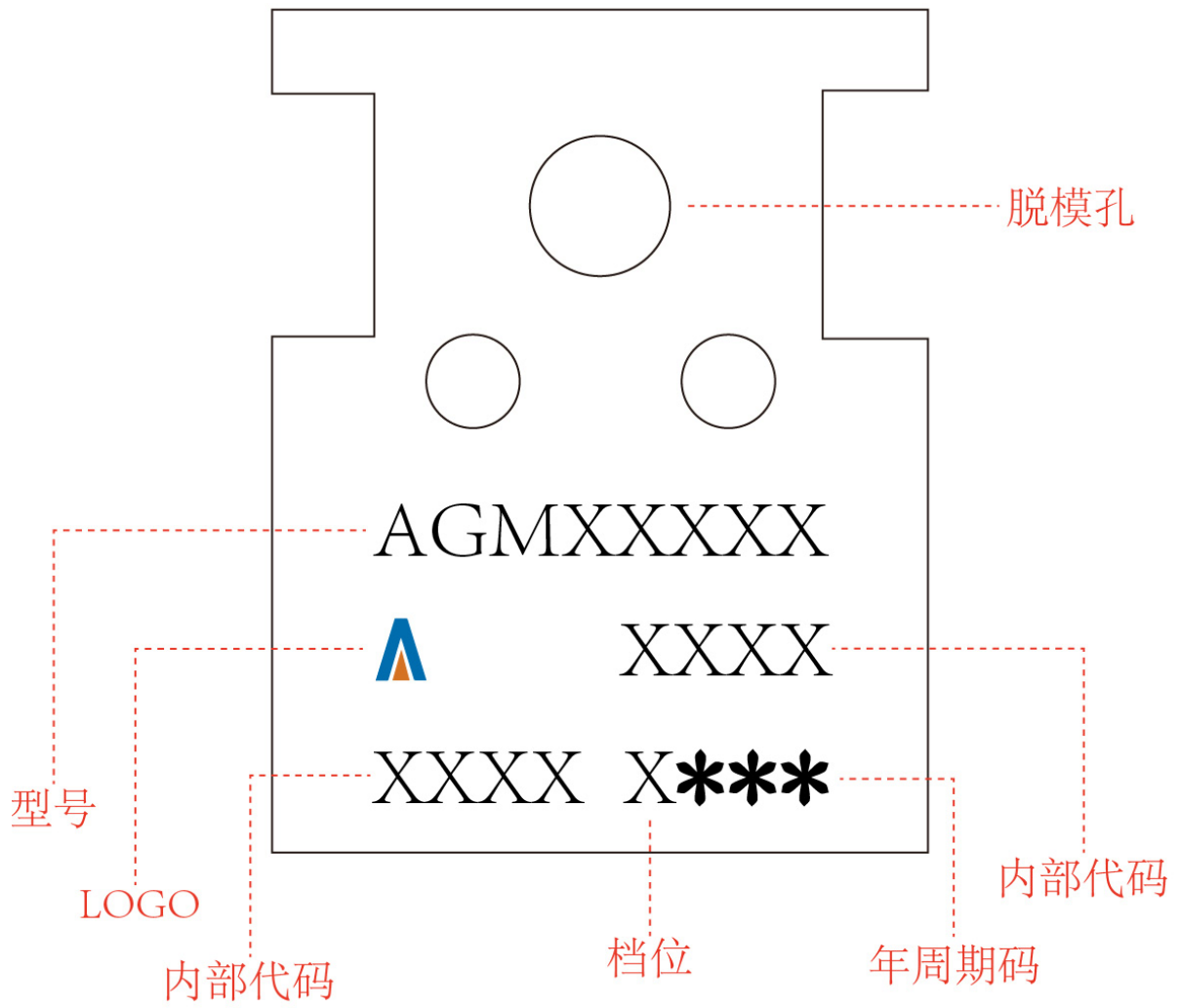
SYMBOL	MILLIMETER		
	MIN	Typ.	MAX
A	4.900	5.000	5.100
A1	1.900	2.000	2.100
A2	2.300	2.400	2.500
b	1.160	-	1.260
b1	1.150	1.200	1.220
b2	1.960	-	2.060
b3	1.950	2.000	2.020
b4	2.960	-	3.060
b5	2.950	3.000	3.020
b6	2.000	2.100	2.250
b7	3.000	3.100	3.250
c	0.590	-	0.660
c1	0.580	0.600	0.620
D	20.900	21.000	21.100
D1	16.250	16.550	16.850
D2	1.052	1.202	1.352
E	15.700	15.800	15.900
E1	13.060	13.260	13.460
E2	4.900	5.000	5.100
E3	2.400	2.500	2.600
e	5.440 BSC		
F	6.000	6.200	6.400
L	19.750	19.950	20.150
L1	-	-	4.300
Phi	3.500	3.600	3.700
Phi 1	-	-	7.400
Phi 2	2.400	2.500	2.600
Q	5.600	5.800	6.000
S	6.180 BSC		
T	9.800	10.000	10.200
theta	8° REF		
theta 1	15° REF		
theta 2	8° REF		

DIM.	MIN.	NOM.	MAX.
A	4.90	5.00	5.10
A1	2.25	2.36	2.51
A2	1.90	2.00	2.10
b	1.16	1.20	1.26
b1	1.96	2.00	2.06
b2	2.96	3.00	3.06
b3	-	-	2.25
b4	-	-	3.25
c	0.59	0.60	0.66
D	20.90	21.00	21.10
D1	16.25	16.55	16.85
D2	1.05	1.17	1.35
E	15.70	15.80	15.90
E1	13.10	13.26	13.50
E2	4.40	4.50	4.60
E3	2.40	2.50	2.60
e	5.436BSC		
L	19.80	19.90	20.10
L1	-	-	4.30
M	0.35	0.89	0.95
P	3.40	3.50	3.60
P1	7.00	7.20	7.40
P2	2.40	2.50	2.60
Q	5.60	5.80	6.00
S	6.05	6.15	6.25
T	9.80	10.00	10.20
U	6.00	6.20	6.40

All dimensions in millimeters

TO-247

Marking Instructions:




Disclaimer:

The information provided in this document is believed to be accurate and reliable. However, Shenzhen Core Control Source Electronics Technology Co., Ltd. does not assume any responsibility for the following consequences. Do not consider the use of such information or use beyond its scope.

The information mentioned in this document may be changed at any time without notice.

The products and information provided in this document do not infringe patents. Shenzhen Core Control Source Electronics Technology Co., Ltd. assumes no responsibility for any infringement of any other rights of third parties. The result of using such products and information.

This document is the fourth version issued on May 10th, 2025. This document replaces all previously provided information.

 It is a registered trademark of Shenzhen Core Control Source Electronics Technology Co., Ltd.

Copyright © 2017 Shenzhen Core Control Source Electronics Technology Co., Ltd. all rights reserved.