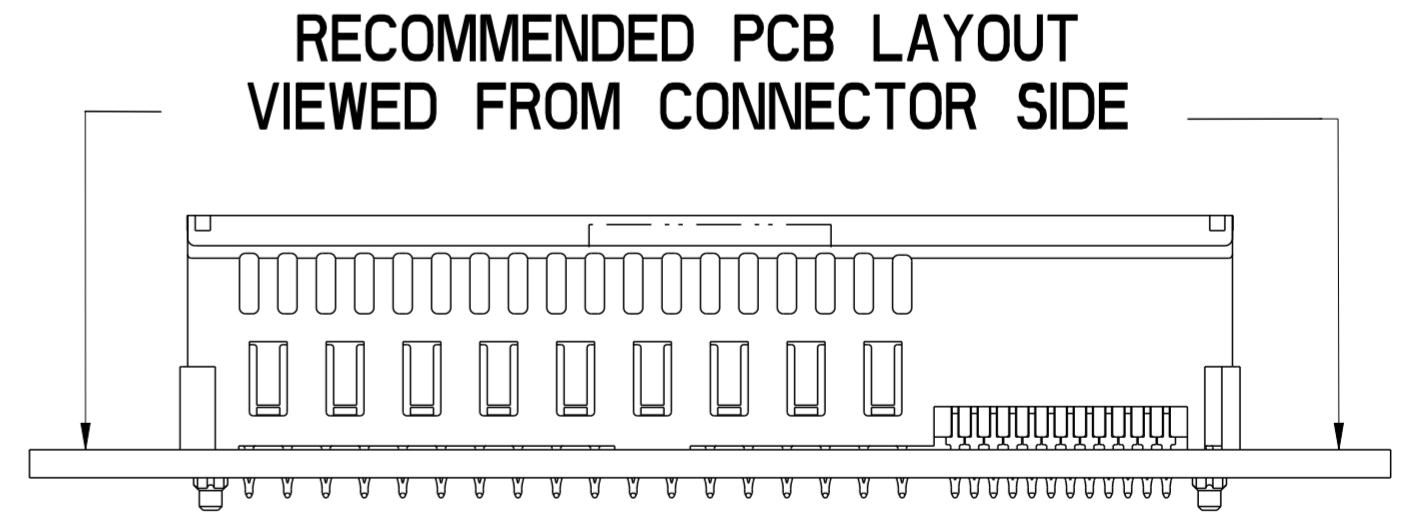
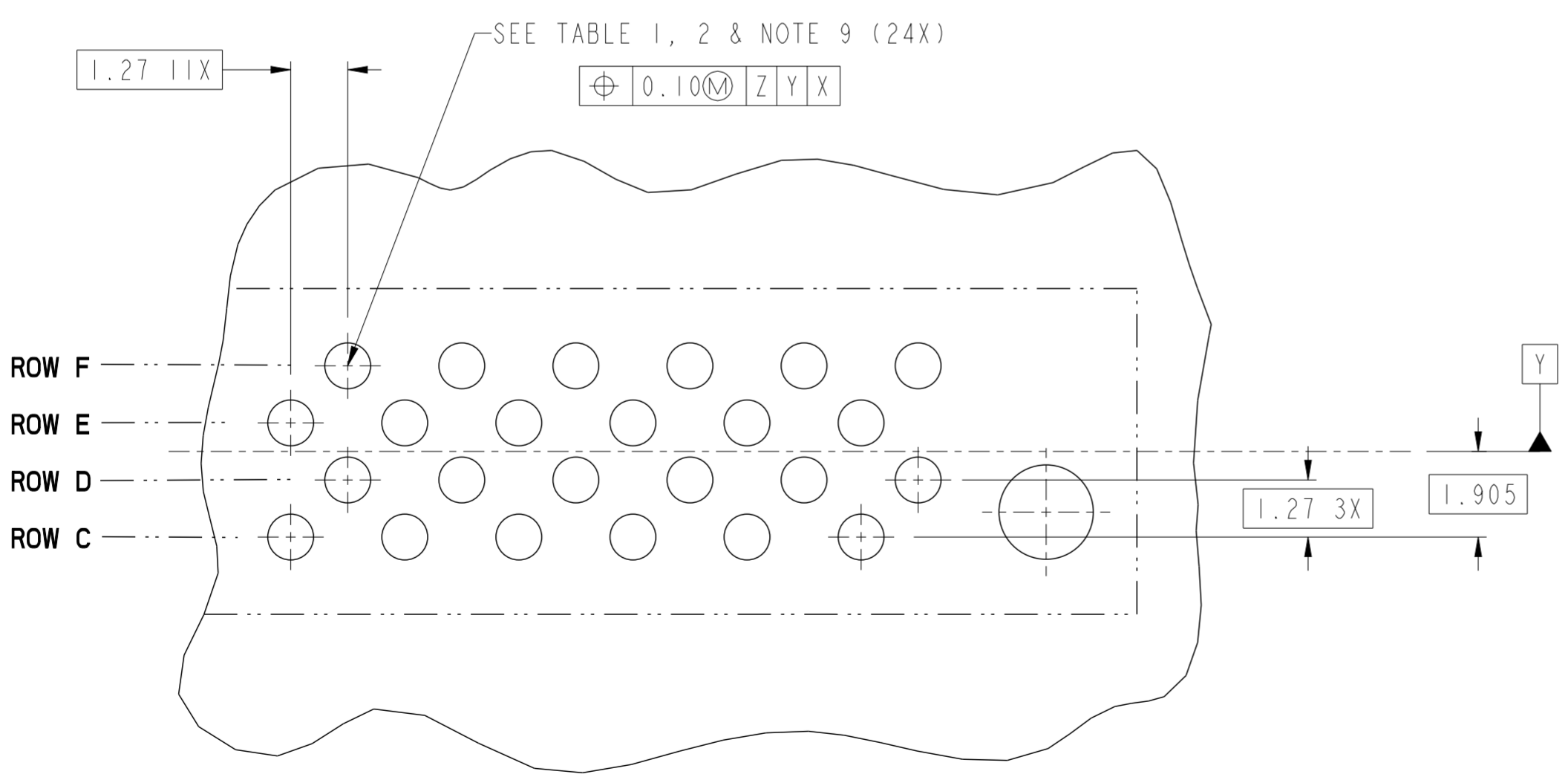
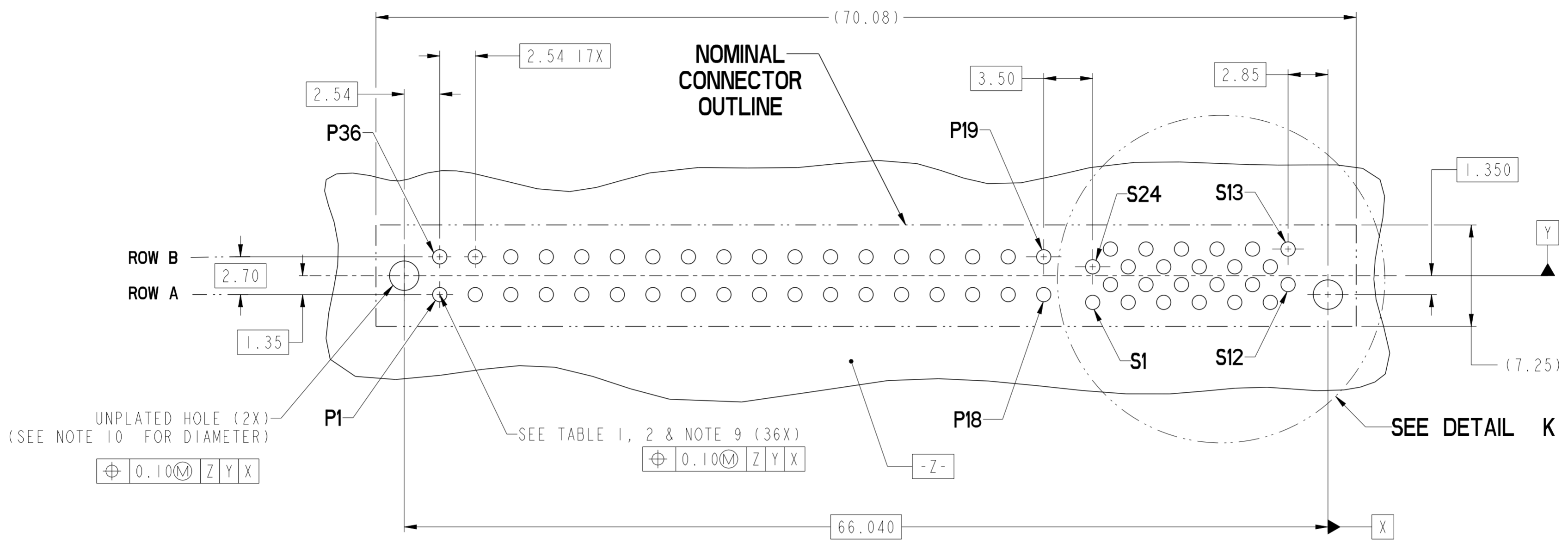


rev	ecn no	dr	date	spec ref	dr	2011/05/20	projection	MM	size	A2	scale	4:1
A	-	HZ	2011-10-27	tolerance std	eng	2011/11/10			ecn no	-	rel level	Released
-	-	-	-	ASME Y14.5	chr	2011/11/14						
-	-	-	-	surface	appr	2011/11/14			cat. no.	-	Product - Customer Drw	sheet 1 of 4
-	-	-	-	ASME Y14.5	TOLERANCES UNLESS OTHERWISE SPECIFIED linear 0.X ±0.3 0.XX ±0.1 0.XXX ±0.05 angular 0° ±2°		TITLE VERT RECT (36P 24S) HIGH POWER CARD EDGE		www.fci.com cat. no.	rel level 10118251	rev A	

Copyright FCI. FCI

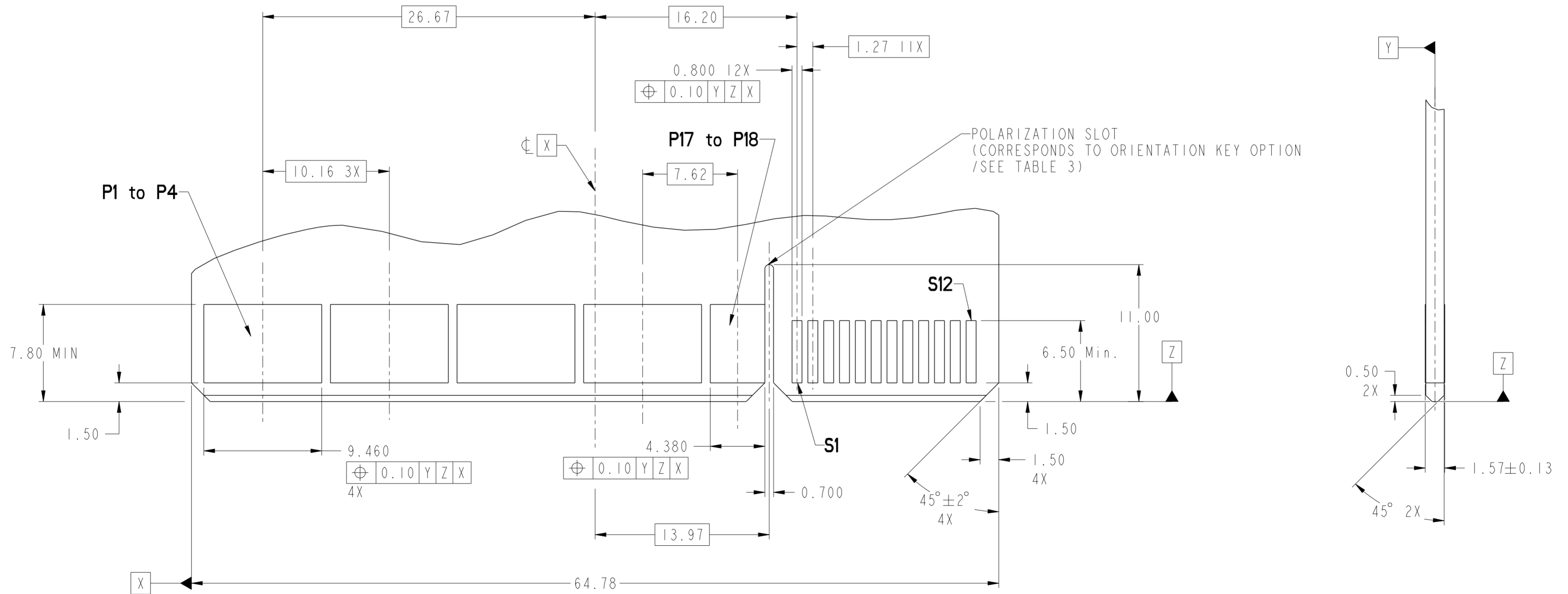


dr	Wei-Long Zhang	2011/05/20	projection	MM	size	A2	scale	4:1
eng	Wei-Long Zhang	2011/11/10			ecn no.	-	rel level	Released
chr	Jon Qin	2011/11/14			product family	CARD EDGE		
appr	Pai-Ming Zheng	2011/11/14			cat. no.	-	Product - Customer Drw	sheet 2 of 4
title VERT RECT (36P 24S) HIGH POWER CARD EDGE			dwg no. 10118251		rev A			

Copyright FCI.

CONTACT TYPE	TOP LAYER DESCRIPTION	TABLE 1 (HPCE / SOLDER TAILS) PLATED THROUGH-HOLE REQUIREMENTS				
		DRILLED HOLE DIAMETER	COPPER THICKNESS	TIN-LEAD THICKNESS	TIN THICKNESS	FINISHED HOLE DIAMETER
POWER & SIGNAL	TIN-LEAD	1.10-1.16 (1.15 DRILL)	0.025 - 0.050	0.005 - 0.015	--	0.94 - 1.10
	IMMERSION TIN	1.10-1.16 (1.15 DRILL)	0.025 - 0.050	--	0.9 - 1.5um	0.94 - 1.10
	COPPER (SEE NOTE 8)	1.10-1.16 (1.15 DRILL)	0.025 - 0.050	--	--	0.94 - 1.10

CONTACT TYPE	TOP LAYER DESCRIPTION	TABLE 2 (HPCE / PRESS-FIT TAILS) PLATED THROUGH-HOLE REQUIREMENTS				
		DRILLED HOLE DIAMETER	COPPER THICKNESS	TIN-LEAD THICKNESS	TIN THICKNESS	FINISHED HOLE DIAMETER
POWER & SIGNAL	TIN-LEAD	0.81-0.86 (0.85 DRILL)	0.025 - 0.050	0.005 - 0.015	--	0.65 - 0.80
	IMMERSION TIN	0.81-0.86 (0.85 DRILL)	0.025 - 0.050	--	0.9 - 1.5um	0.70 - 0.80
	COPPER (SEE NOTE 8)	0.81-0.86 (0.85 DRILL)	0.025 - 0.050	--	--	0.70 - 0.80



**RECOMMENDED MATING BOARD
FOOTPRINT**

dr	Wei-Long Zhang	2011/05/20	projection	MM	size	A2	scale	4:1
eng	Wei-Long Zhang	2011/11/10			ecn no	-	rel level	Released
chr	Jon Qin	2011/11/14						
appr	Pai-Ming Zheng	2011/11/14	product family	CARD EDGE	rel level	Released		
		VERT RECT (36P 24S) HIGH POWER CARD EDGE			dwg no 10118251	rev A		
www.fci.com		cat. no.	Product - Customer Drw			sheet 3 of 4		



HPCE PART NUMBER (TABLE 3)

PART NUMBER	TAIL TYPE	ORIENTATION KEY	DIM "A" TYPICAL TAIL LENGTH	DIM "B" RECOMMENDED BOARD THICKNESS	SPECIFIED APPLICATION TOOL
10118251-001LF	SOLDER	YES	3.17 ±0.25	1.59 - 2.38	NO
10118251-002LF	SOLDER	NO			
10118251-003	PRESS-FIT	YES	3.17 ±0.25	1.57 MIN	YES NOTE 11
10118251-003LF	PRESS-FIT	YES			
10118251-004	PRESS-FIT	NO			
10118251-004LF	PRESS-FIT	NO			

NOTES:

1. CONNECTOR MATERIALS:

HOUSING: HIGH TEMPERATURE THERMAL PLASTIC, BLACK
UL 94V-0 COMPLIANT
CONTACTS: HIGH PERFORMANCE COPPER ALLOY.

2. CONTACT FINISH REF. GS-12-604 SECTION 5.2.

3. PRODUCT SPECIFICATION: GS-12-604.

4. APPLICATION SPECIFICATION: GS-20-128.

5. PRODUCT MARKING (FCI - PART NUMBER & DATE CODE) ON HOUSING IN AREA SHOWN.

6. PACKAGING MEETS FCI SPECIFICATION GS-14-937.

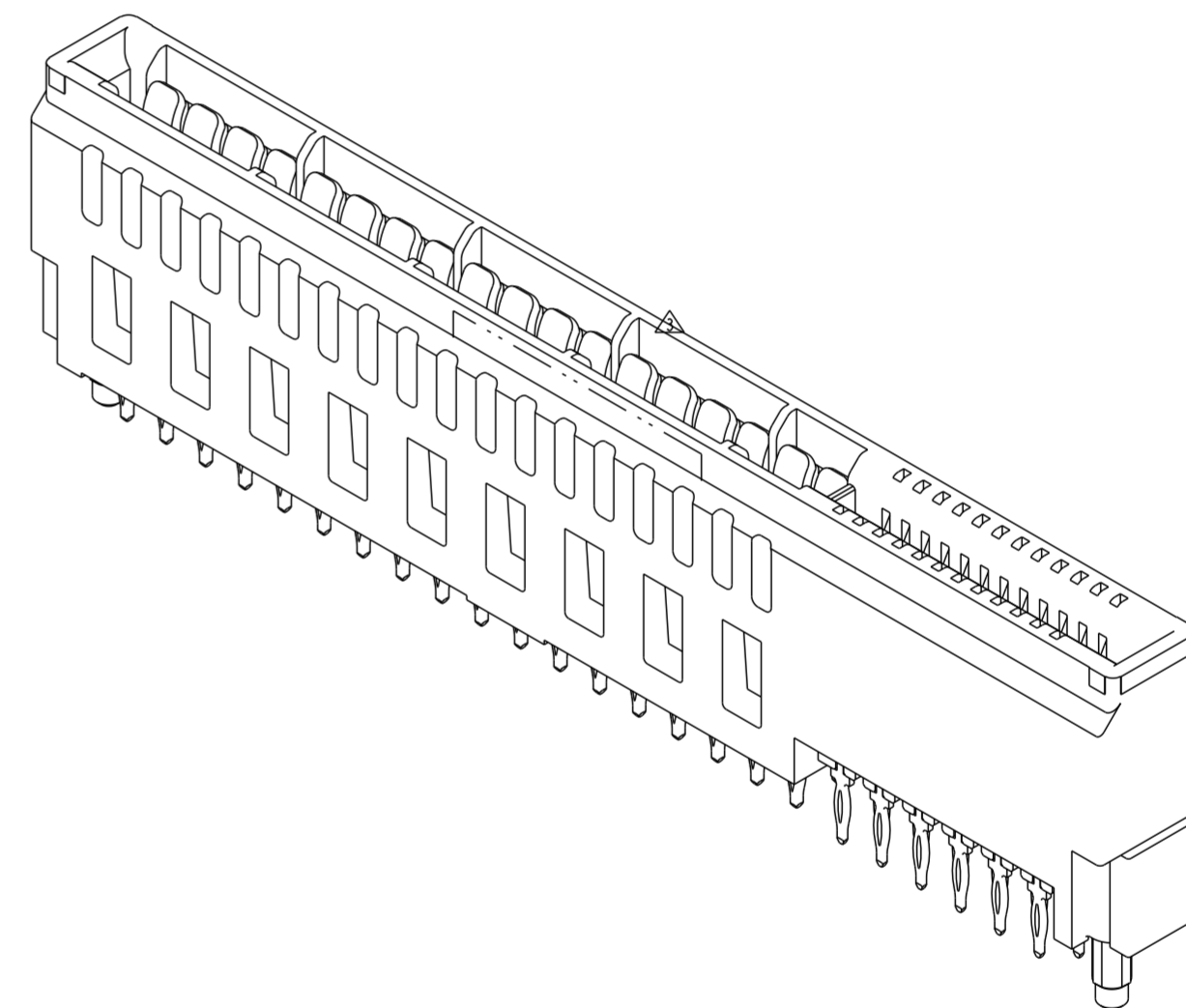
7. HOUSING COMPONENT WILL WITHSTAND EXPOSURE TO 260°C PEAK TEMPERATURE FOR 60 SECONDS IN A CONVECTION, INFRA-RED, OR VAPOR PHASE REFLOW OVEN.

8. COPPER PLATING THICKNESS IN CENTER OF VIA-HOLE CAN BE NO MORE THAN 0.003 LESS THAN OTHER AREAS.

9. ALL HOLE SIZES ARE FINISHED HOLE SIZES.

10. MOUNTING HOLES ARE UNPLATED
 Ø 2.40 +/- 0.1 FOR PRESS-FIT TAILS
 Ø 2.10 +/- 0.1 FOR SOLDER TAILS

11. APPLICATION TOOL DRAWING: 10119453.



dr	Wei-Long Zhang	2011/05/20	projection	MM	size	A2	scale	4:1
eng	Wei-Long Zhang	2011/11/10			ecn no.	-	rel level	
chr	Jon Qin	2011/11/14			product family	CARD EDGE	rel level	Released
appr	Pai-Ming Zheng	2011/11/14			title	VERT RECT (36P 24S) HIGH POWER CARD EDGE		rev
www.fci.com			cat. no.	-	Product - Customer Drw	sheet 4 of 4		