

Pitch:0.80x1.20mm(0.031" x0.047")
 Female Header Dual Rows S.M.T Type

ELETE
 Professional Connecting Solutions
 HFFDM30-Series

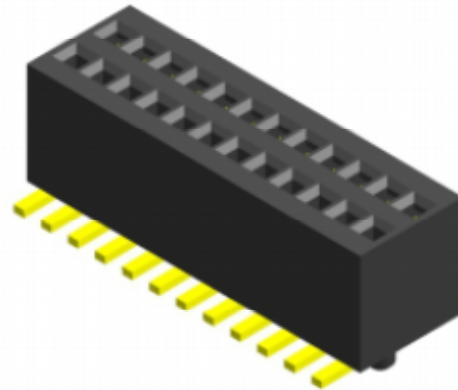
Specifications

Current Rating:0.5 Ampere
 Insulation Resistance:500MΩ Min
 Dielectric Withstanding:200V AC
 Contact Resistance:20mΩ Max
 Operating Temperature:-40℃ to +105℃

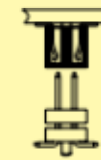
Materials

Contact Material: Phosphor Bronze
 Insulation Material: Polyester,UL 94V-0
 LCP/NL6T

All material RoHS&Reach Compliant
 Halogen-free is available



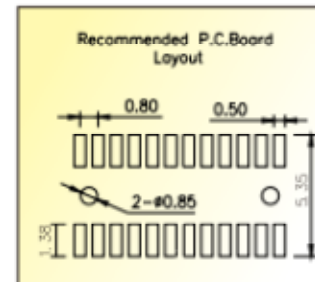
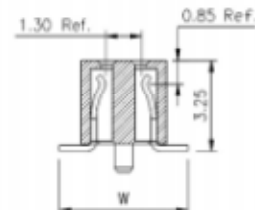
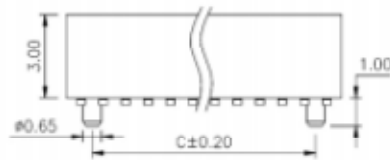
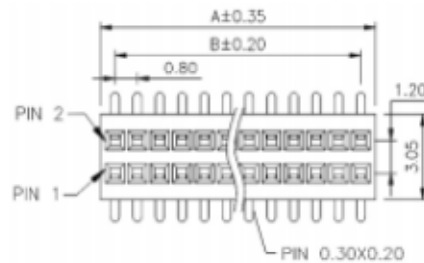
Mating with



HMFDMH10



HMFDM10



PS:Suggested Mating Pin Length:1.4~2.8mm

No. of Pins/Ro	Dimension Information			No. of Pins/Ro	Dimension Information			No. of Pins/Ro	Dimension Information			No. of Pins/Ro	Dimension Information		
	A	B	C		A	B	C		A	B	C		A	B	C
03	2.66	1.60	0.80	15	12.26	11.20	10.40	27	21.86	20.80	20.00	39	31.46	30.40	29.60
04	3.46	2.40	1.60	16	13.06	12.00	11.20	28	22.66	21.60	20.80	40	32.26	31.20	30.40
05	4.26	3.20	2.40	17	13.86	12.80	12.00	29	23.46	22.40	21.60	41	33.06	32.00	31.20
06	5.06	4.00	3.20	18	14.66	13.60	12.80	30	24.26	23.20	22.40	42	33.86	32.80	32.00
07	5.86	4.80	4.00	19	15.46	14.40	13.60	31	25.06	24.00	23.20	43	34.66	33.60	32.80
08	6.66	5.60	4.80	20	16.26	15.20	14.40	32	25.86	24.80	24.00	44	35.46	34.40	33.60
09	7.46	6.40	5.60	21	17.06	16.00	15.20	33	26.66	25.60	24.80	45	36.26	35.20	34.40
10	8.26	7.20	6.40	22	17.86	16.80	16.00	34	27.46	26.40	25.60	46	37.06	36.00	35.20
11	9.06	8.00	7.20	23	18.66	17.60	16.80	35	28.26	27.20	26.40	47	37.86	36.80	36.00
12	9.86	8.80	8.00	24	19.46	18.40	17.60	36	29.06	28.00	27.20	48	38.66	37.60	36.80
13	10.66	9.60	8.80	25	20.26	19.20	18.40	37	29.86	28.80	28.00	49	39.46	38.40	37.60
14	11.46	10.40	9.60	26	21.06	20.00	19.20	38	30.66	29.60	28.80	50	40.26	39.20	38.40