

**PLEASE CHECK WWW.MOLEX.COM FOR LATEST PART INFORMATION**

**Part Number:** [0190690354](#)  
**Status:** **Obsolete**  
**Overview:** [ring tongue](#) [spade terminals](#)  
**Description:** Krimptite™ Ring Tongue Terminal for 24-26 AWG Wire

**Documents:**  
[Drawing \(PDF\)](#)

**Agency Certification**

UL E32244

**General**

Product Family Ring and Spade Terminals  
 Series [19069](#)  
 Crimp Quality Equipment Yes  
 Mil-Spec N/A  
 Overview [ring tongue](#) [spade terminals](#)  
 Product Name Krimptite™  
 Type Ring

**Physical**

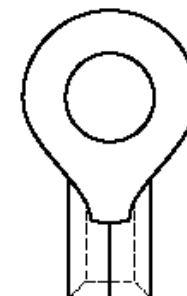
Barrel Type Closed  
 Insulation None  
 Material - Plating Mating Tin  
 Material - Plating Termination Tin  
 Packaging Type Bag  
 Plating min - Mating 2.540µm (100µ")  
 Plating min - Termination 2.540µm (100µ")  
 Stud Size 4 (M2.6)  
 Termination Interface: Style Crimp or Compression  
 Wire Size AWG 24, 26  
 Wire Size mm² 0.12 - 0.20

**Material Info**

Old Part Number M-1113-04

**Reference - Drawing Numbers**

Product Specification PS-19902-011, PS-19902-013  
 Sales Drawing SD-19069-003



*Series  
 image - Reference only*

**EU RoHS**

**ELV and RoHS  
 Compliant**

**REACH SVHC**

**Contains SVHC: No  
 Low-Halogen Status  
 Low-Halogen**

**China RoHS**



**Need more information on product  
 environmental compliance?**

Email [productcompliance@molex.com](mailto:productcompliance@molex.com)  
 For a multiple part number RoHS Certificate of  
 Compliance, [click here](#)

Please visit the [Contact Us](#) section for any  
 non-product compliance questions.

**Search Parts in this Series**

[19069Series](#)

**Application Tooling | FAQ**

*Tooling specifications and manuals are  
 found by selecting the products below.  
 Crimp Height Specifications are then  
 contained in the Application Tooling  
 Specification document.*

**Global**

| Description                                          | Product #                  |
|------------------------------------------------------|----------------------------|
| Hand Crimp Tool                                      | <a href="#">0640030400</a> |
| Crimp Head for the<br>AT-200™ Pneumatic<br>Hand Tool | <a href="#">0640070400</a> |