

DO NOT SCALE FROM THIS PRINT

DESIGNED & DIMENSIONED IN MILLIMETERS [INCHES]

AFI-J-P-XX-ST-MT1-XX

GENDER
-J: JACK

TYPE
-P: PCB

PACKAGING
-BLANK: NO TAPE & REEL
*-TR: TAPE & REEL (SEE SHT 3, FIG 2)

TERMINATION
-MT1: MIXED TECHNOLOGY

ORIENTATION
-ST: STRAIGHT

PLATING SPECIFICATION
-HF: 30µ" GOLD CENTER CONTACT, 5µ" GOLD OUTER CONTACT
-GF: 10µ" GOLD CENTER CONTACT, 5µ" GOLD OUTER CONTACT
-FF: 5µ" GOLD CENTER CONTACT, 5µ" GOLD OUTER CONTACT (SEE TABLE 1)

*= NOT RELEASE FOR PRODUCTION

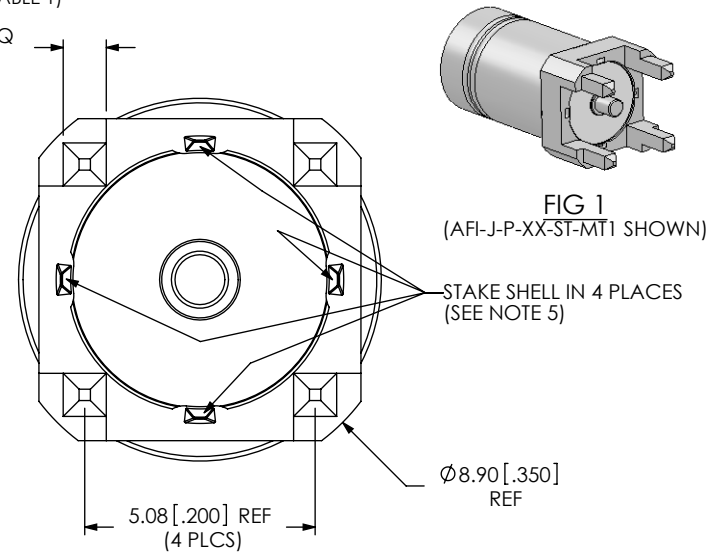
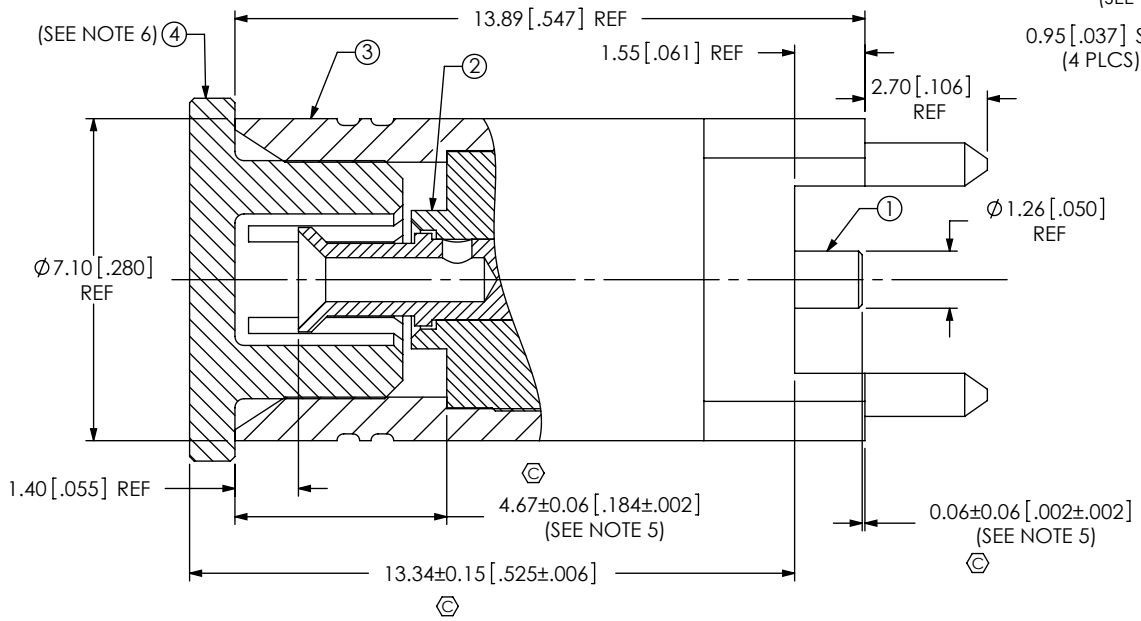
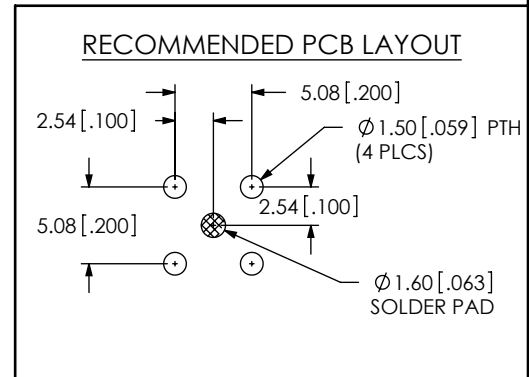


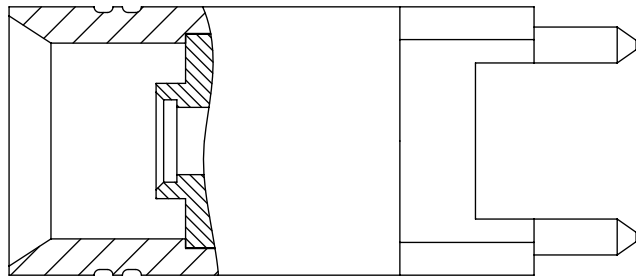
TABLE 1

ITEM	COMPONENT	-HF	-GF	-FF
1	SOCKET	AFI-J-P-H-ST-SKT	AFI-J-P-G-ST-SKT	AFI-J-P-F-ST-SKT
2	INSULATOR	AFI-J-P-ST-INS		
3	SHELL	AFI-J-P-F-ST-TH1-SHL		
4	COVER	AFI-J-P-ST-CVR (SEE NOTE 6)		

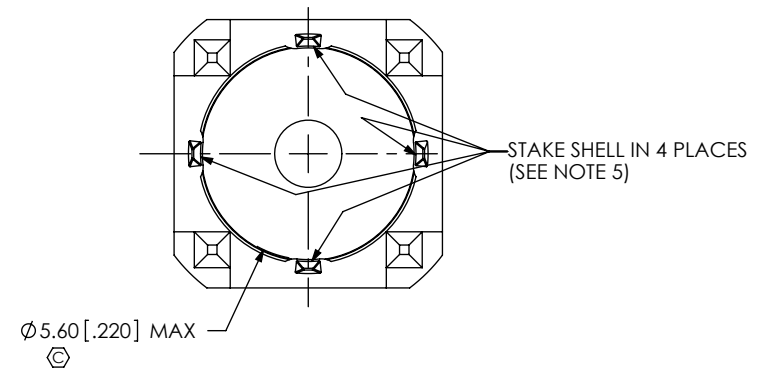


- NOTES:
- REPRESENTS A CONTROL PLAN CRITICAL DIMENSION
 - SHARP CORNERS MAY BE BROKEN WITH A 0.05 RADIUS OR 0.05 x 45° CHAMFER, UNLESS OTHERWISE SPECIFIED.
 - FABRICATED PARTS MUST BE FREE OF SCRATCHES, TOOL MARKS, BURRS, ETC.
 - ITEM 1 IS PRESS FIT INTO ITEM 2.
 - ITEM 2 IS PRESS FIT INTO ITEM 3 AFTER STAKING, ITEM 2 MUST WITHSTAND AN AXIAL FORCE OF 2 LBS MIN. AND MAINTAIN DIMENSIONS SHOWN.
 - ITEM 4 FOR AFI-J-P-XX-ST-MT1-TR ONLY.
 - PRODUCT TO BE PACKAGED PER PACKING STANDARD CO-HD-WI-3040-M. TRAY: TY-SMA001-1 COVER: TY-SMA001-2 100 PARTS PER TRAY (ONE PART PER POCKET).

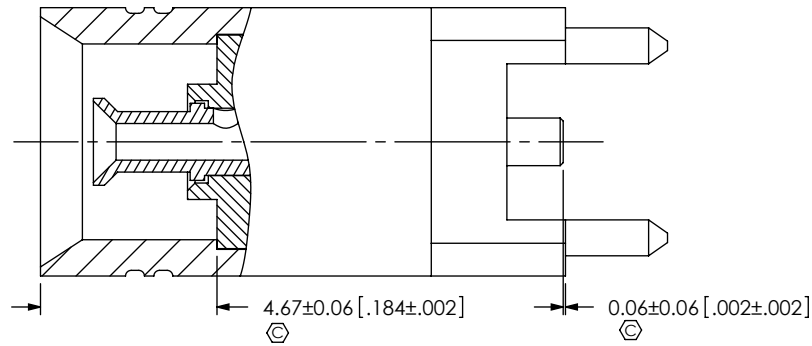
UNLESS OTHERWISE SPECIFIED, DIMENSIONS ARE IN MILLIMETERS. TOLERANCES ARE: DECIMALS ANGLES X.X: ±0.3 [.01] 5° X.XX: ±0.13 [.005] X.XXX: ±0.051 [.0020]	PROPRIETARY NOTE THIS DOCUMENT CONTAINS INFORMATION CONFIDENTIAL AND PROPRIETARY TO SAMTEC, INC. AND SHALL NOT BE REPRODUCED OR TRANSFERRED TO OTHER DOCUMENTS OR DISCLOSED TO OTHERS OR USED FOR ANY PURPOSE OTHER THAN THAT WHICH IT WAS OBTAINED WITHOUT THE EXPRESSED WRITTEN CONSENT OF SAMTEC, INC.		
		520 PARK EAST BLVD. NEW ALBANY, IN 47150 PHONE: 812-944-6733 FAX: 812-948-5047 e-Mail: info@SAMTEC.com code 55322	
MATERIAL: DO NOT SCALE DRAWING SHEET SCALE: 6:1		DESCRIPTION: AFI STRAIGHT JACK ASSEMBLY	
SHELL: BRASS SOCKET: BRASS INSULATOR: PTFE COVER: LCP		DWG. NO. AFI-J-P-XX-ST-MT1-XX	
BY: KNOWLDEN 11/1/2011		SHEET 1 OF 3	



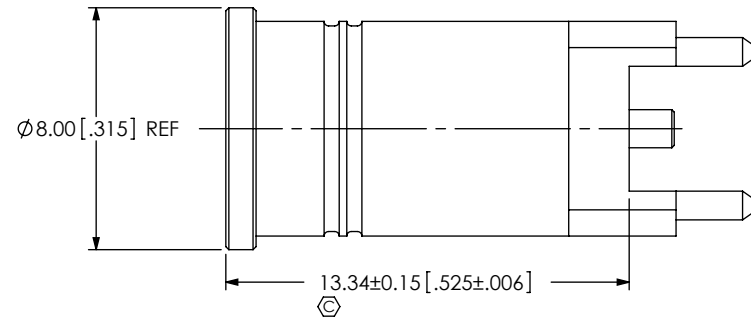
IN-PROCESS 1
(INSERT INSULATOR)



IN-PROCESS 2
(STAKE SHELL)



IN-PROCESS 3
(INSERT SOCKET)



IN-PROCESS 4
(ASSEMBLE COVER ON AFI-J-P-XX-ST-MT1-TR ONLY)

PROPRIETARY NOTE
THIS DOCUMENT CONTAINS INFORMATION CONFIDENTIAL AND PROPRIETARY TO SAMTEC, INC. AND SHALL NOT BE REPRODUCED OR TRANSFERRED TO OTHER DOCUMENTS OR DISCLOSED TO OTHERS OR USED FOR ANY PURPOSE OTHER THAN THAT WHICH IT WAS OBTAINED WITHOUT THE EXPRESSED WRITTEN CONSENT OF SAMTEC, INC.

DO NOT SCALE DRAWING

SHEET SCALE: 5:1

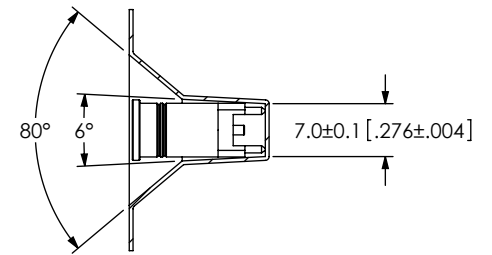
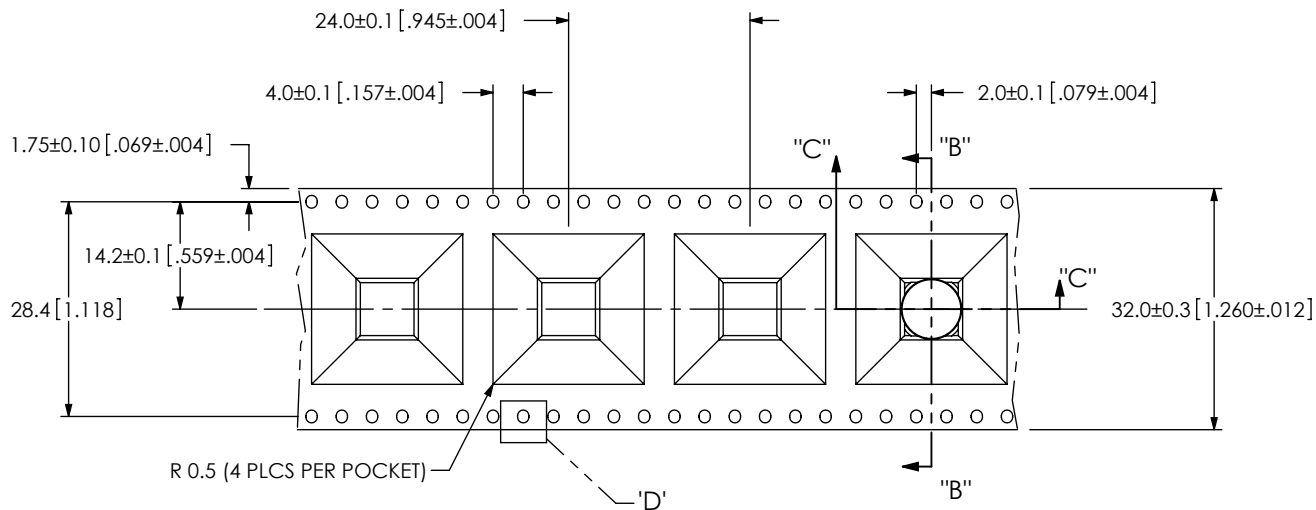
samtec

520 PARK EAST BLVD, NEW ALBANY, IN 47150
PHONE: 812-944-6733 FAX: 812-948-5047
e-Mail info@SAMTEC.com code 55322

DESCRIPTION: AFI STRAIGHT JACK ASSEMBLY

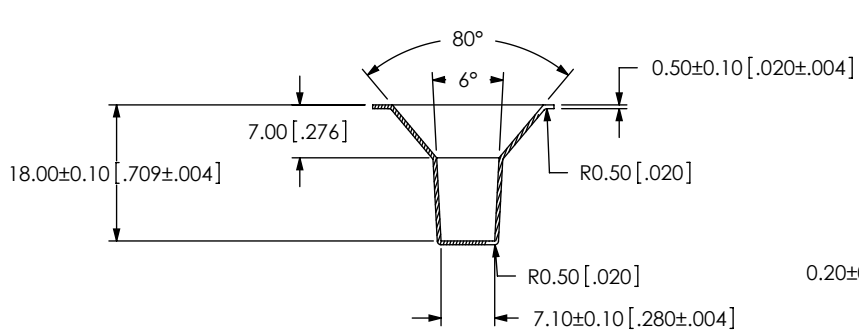
DWG. NO. AFI-J-P-XX-ST-MT1-XX

BY: KNOWLDEN 11/1/2011 SHEET 2 OF 3

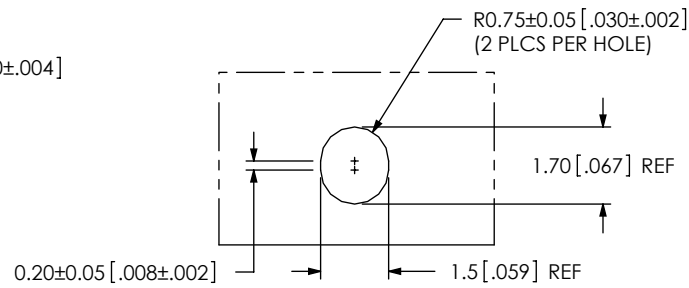


SECTION "B"-"B"
SCALE 1 : 1

FIG 2
(AFI-J-P-XX-ST-MT1-TR SHOWN)



SECTION "C"-"C"
SCALE 1 : 1



DETAIL 'D'
SCALE 6 : 1

PROPRIETARY NOTE
THIS DOCUMENT CONTAINS INFORMATION CONFIDENTIAL AND PROPRIETARY TO SAMTEC, INC. AND SHALL NOT BE REPRODUCED OR TRANSFERRED TO OTHER DOCUMENTS OR DISCLOSED TO OTHERS OR USED FOR ANY PURPOSE OTHER THAN THAT WHICH IT WAS OBTAINED WITHOUT THE EXPRESSED WRITTEN CONSENT OF SAMTEC, INC.

DO NOT SCALE DRAWING

SHEET SCALE: 5:1



520 PARK EAST BLVD, NEW ALBANY, IN 47150
PHONE: 812-944-6733 FAX: 812-948-5047
e-Mail info@SAMTEC.com code 55322

DESCRIPTION: AFI STRAIGHT JACK ASSEMBLY

DWG. NO. AFI-J-P-XX-ST-MT1-XX

BY: KNOWLDEN 11/1/2011 SHEET 3 OF 3