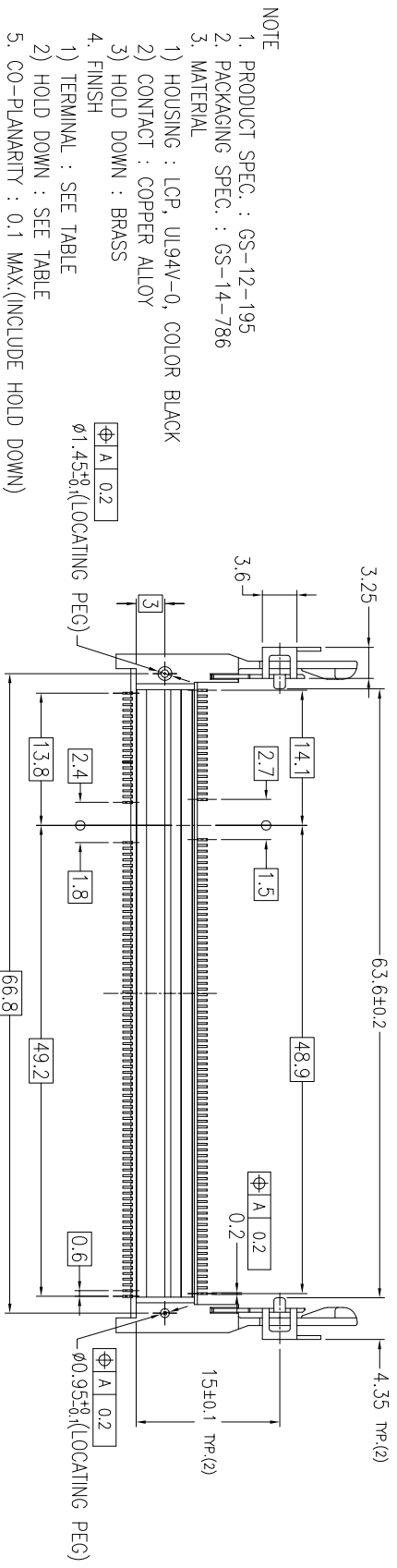
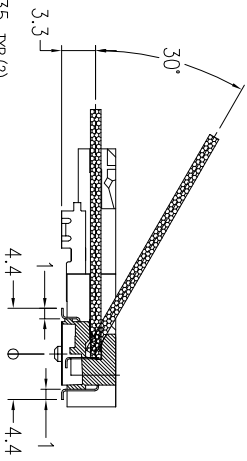
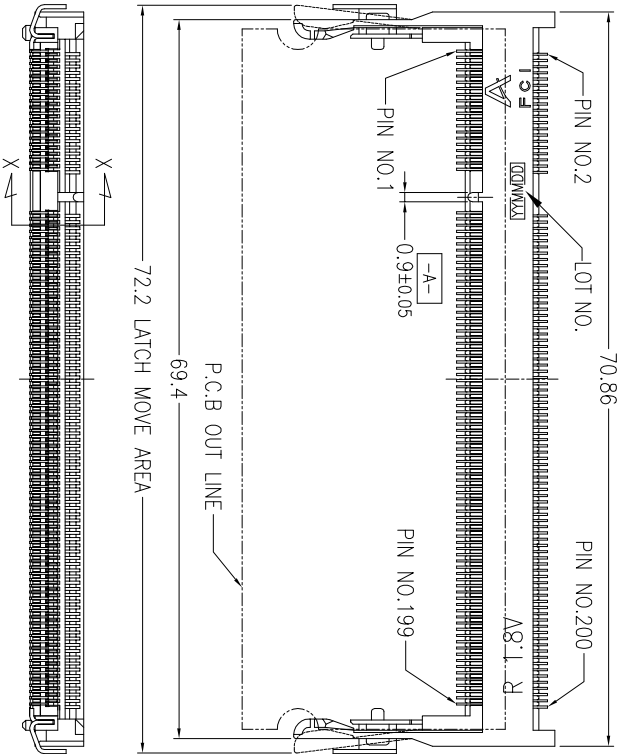
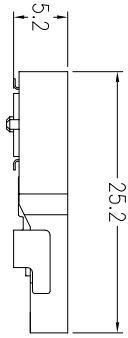




PRODUCT NO.
10033854-*52**

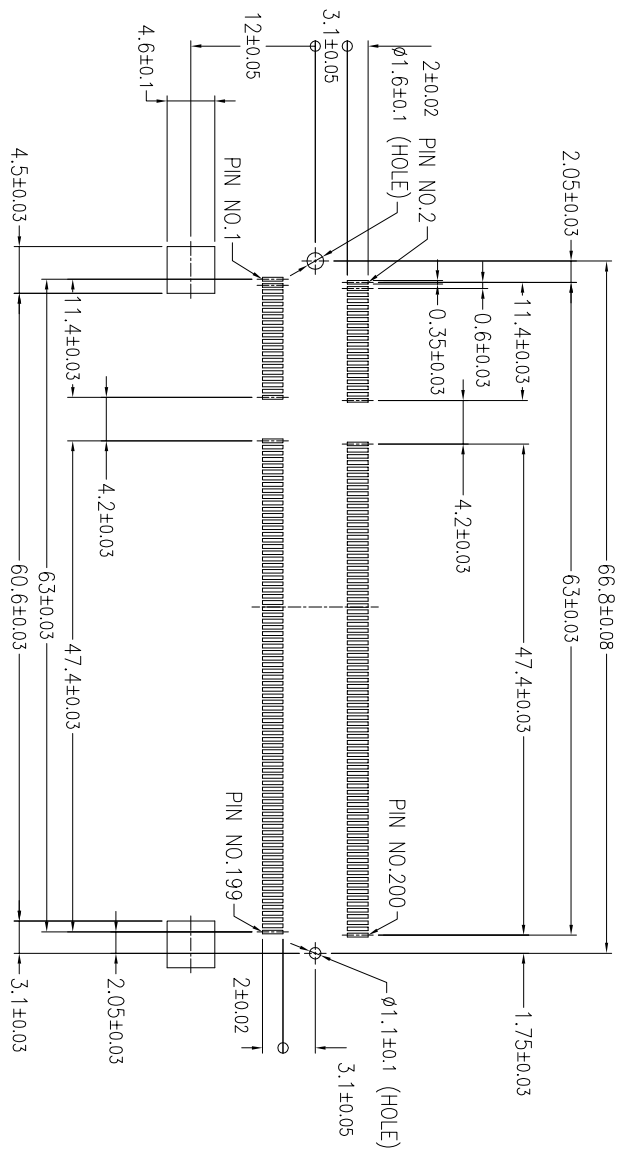


- NOTE
1. PRODUCT SPEC. : GS-12-195
 2. PACKAGING SPEC. : GS-14-786
 3. MATERIAL
 - 1) HOUSING : LCP, UL94V-0, COLOR BLACK
 - 2) CONTACT : COPPER ALLOY
 - 3) HOLD DOWN : BRASS
 4. FINISH
 - 1) TERMINAL : SEE TABLE
 - 2) HOLD DOWN : SEE TABLE
 5. CO-PLANARITY : 0.1 MAX.(INCLUDE HOLD DOWN)
 6. THIS PRODUCT MEETS EUROPEAN UNION DIRECTIVES AND OTHER COUNTRY REGULATIONS AS DESCRIBED IN GS-22-008.
 7. THE HOUSING WILL WITHSTAND EXPOSURE TO 260° PEAK TEMPERATURE FOR 10 SECONDS IN A REFLOW SOLDER APPLICATION.

mat'l. code	ecr no	dr	date	tolerances unless otherwise specified	CUSTOMER COPY	projection	title	product family	code
	2	M H	8/28/03	.XX ± 0.10		MM	DDR II 0.6 mm PITCH 200 POS. REVERSE TYPE ASSY	50UF SO-DIMM	JP
	3	M H	4/2/04	0° ±5°					
	4	M H	6/29/04						
	A	J04-0401	M H	9/28/04	dr	6/29/04			
	B	T05-0022	R C	11/9/04	engr	M.Hasegawa			
	C	T05-0229	R C	10/12/05	chr				
	D	pg08-0333	B L	12/1/08	appd				
sheet	revision	D	D	D	D	D	scale		
index	sheet	1	2	3	4		2:1		



PRODUCT NO.
10033854-*52**

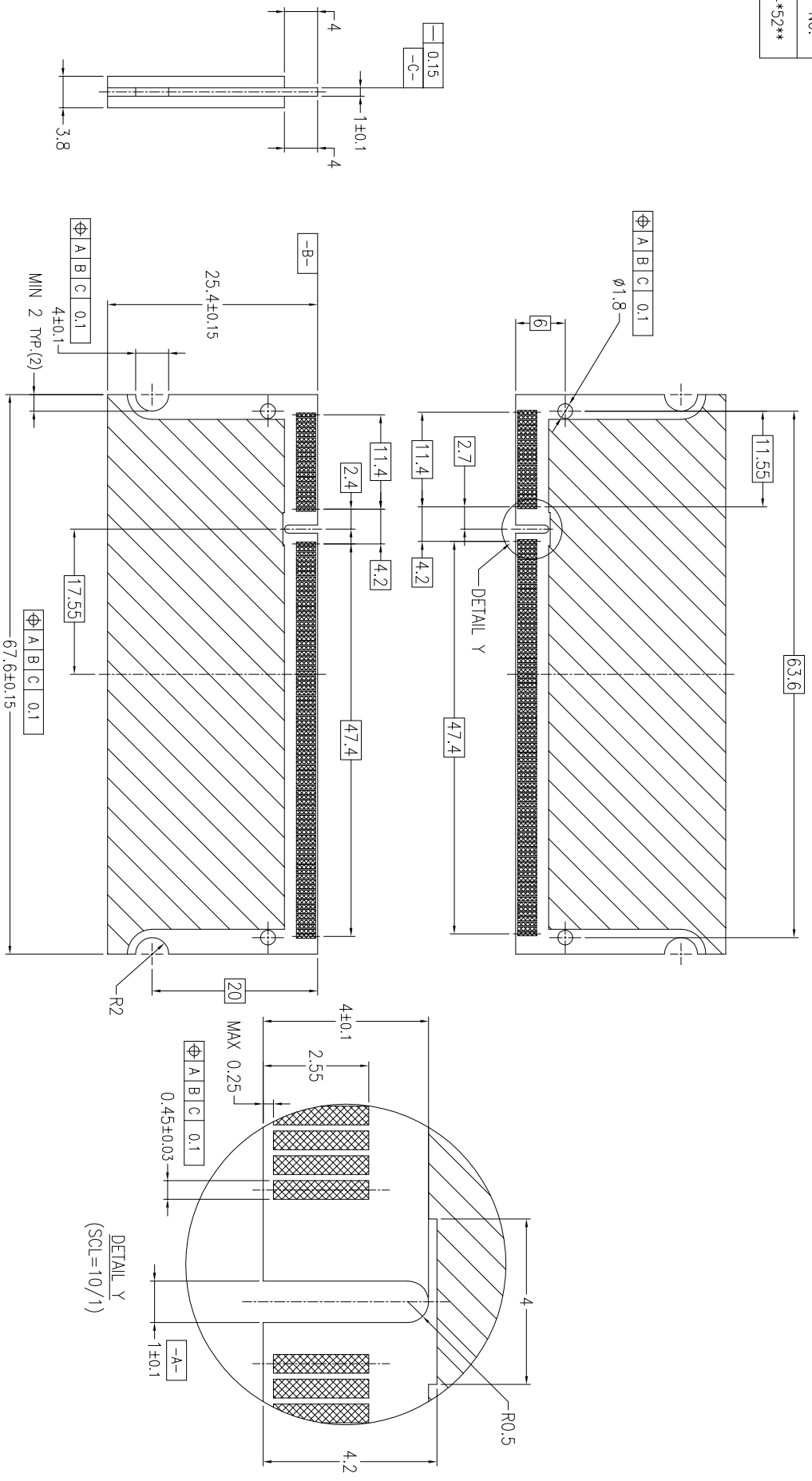


RECOMMENDED MOUNTING P.C.B LAYOUT

mat'l. code				tolerances unless otherwise specified	CUSTOMER COPY		FCI	
itr	ecn no	dr	ddate	.X ± 0.20	projection	title		
D				.XX ± 0.10	MM	DDR II 0.6 mm PITCH 200 POS. REVERSE TYPE ASSY		
				0° ± 5°	scale	product family	SOUF	SO-DIMM
					2:1	size	10033854	code
						sheet	JP	2 of
						sheet		
						index		



PRODUCT NO.
10033854-*52**



RECOMMENDED MODULE P.C.B LAYOUT

mat'l. code		tolerances unless otherwise specified		CUSTOMER COPY		title	
ltr	ecn no	dr	ddate	lineor	.XX ± 0.20	projection	DDR II 0.6 mm PITCH 200 POS. REVERSE TYPE ASS'Y
D				angles	0° ±5°	MM	product family SOUF SO-DIMM
				dr	M.Hasegawa	6/29/04	code
				enfr	M.Hasegawa	6/29/04	size
				chr			dwg no
				appt			10033854
sheet	revision			scale	2:1		code
index	sheet						JP
							sheet
							3 of



PRODUCT NO.	LOCATING PEG	TERMINAL CONTACT AREA FINISH	HOLD DOWN FINISH	SOLDER TAIL FINISH
10033854-052FSLF	YES	Au FLASH		
10033854-152FSLF	NO			
10033854-052TSLF	YES	Au 0.3um MIN.	PURE Sn PLATING	
10033854-152TSLF	NO			
10033854-052ASLF	YES	Au 0.76um MIN.		Au FLASH
10033854-152ASLF	NO			
10033854-052FB	NO	Au FLASH		
10033854-052TB	YES	Au 0.3um MIN.	Sn-Pb PLATING	
10033854-152TB	NO			
10033854-052AB	YES	Au 0.76um MIN.		
10033853-152AB	NO			
10033854-252FSLF	YES	Au FLASH		
10033854-352FSLF	NO			
10033854-252TSLF	YES	Au 0.3um MIN.	PURE Sn PLATING	
10033854-352TSLF	NO			
10033854-252ASLF	YES	Au 0.76um MIN.		Pure Sn PLATING
10033854-352ASLF	NO			
10033854-252FB	YES	Au FLASH		
10033854-352FB	NO			
10033854-252TB	YES	Au 0.3um MIN.	Sn-Pb PLATING	
10033854-352TB	NO			
10033854-252AB	YES	Au 0.76um MIN.		
10033854-352AB	NO			
10033854-452FS	YES	Au FLASH		
10033854-552FS	NO			
10033854-452TS	YES	Au 0.3um MIN.	PURE Sn PLATING	
10033854-552TS	NO			
10033854-452AS	YES	Au 0.76um MIN.		
10033854-552AS	NO			
10033854-452FB	YES	Au FLASH		
10033854-552FB	NO			
10033854-452TB	YES	Au 0.3um MIN.	Sn-Pb PLATING	
10033854-552TB	NO			
10033854-452AB	YES	Au 0.76um MIN.		
10033854-552AB	NO			

10033854- LF

<PACKING METHOD>
R : TAPE REEL
DEFAULT : TRAY

<HOLD DOWN FINISH>
S : Pure Sn
B : Sn-Pb

<CONTACT AREA FINISH>
F : Au FLASH
T : Au 0.3um MIN.
A : Au 0.76um MIN.

<TOTAL HEIGHT>
52 : 5.2mm

<LOCATING PEG, SOLDER TAIL FINISH>
0 : YES, Au FLASH
1 : NO, Au FLASH
2 : YES, Pure Sn PLATING
3 : NO, Pure Sn PLATING
4 : YES, Sn-Pb PLATING
5 : NO, Sn-Pb PLATING

FOR ROHS OPTIONS:
TAIL PLATING CODE MUST BE 0~3.
HOLD DOWN PLATING CODE MUST BE "S".
"LF" CODE IS EXIST IN THE END.
EX: 10033854-252TSLF

FOR NOT ROHS COMPATIBLE:
THIS "LF" CODE IS "BLANK".
EX: 10033854-452TS

mat'l. code		tolerances unless otherwise specified		CUSTOMER COPY		FCI www.fciconnect.com	
ltr	ecn no	dr	ddate	lineor	.XX ± 0.20	projection	title
D				angles	0° ±5°	MM	DDR II 0.6 mm PITCH 200 POS. REVERSE TYPE ASSY
				dr	MHasegawa	6/29/04	product family
				engr	MHasegawa	6/29/04	SOUF SO-DIMM
				chr			code
				appd			10033854
sheet	revision			scale	2:1		sheet
index	sheet						4 of