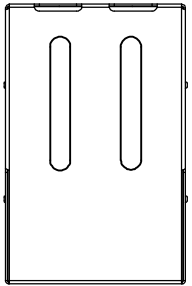
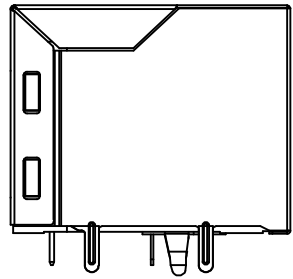


REACH & RoHS COMPLIANT

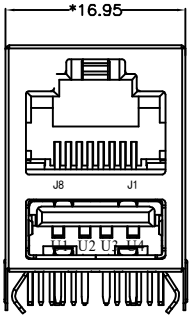
REV.	ECN / DESCRIPTION	BY	DATE



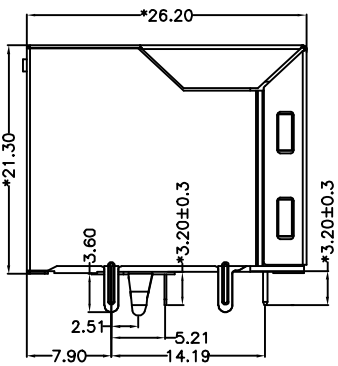
TOP VIEW



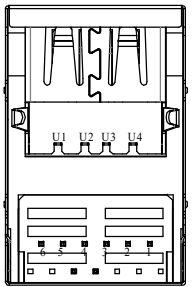
LEFT SIDE VIEW



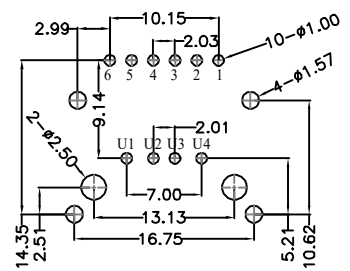
FRONT VIEW



RIGHT SIDE VIEW



BOTTOM VIEW



RECOMMENDED PCB LAYOUT VIEWED FROM COMPONENT SIDE

**MATERIAL:**

**RJ45:**

- HOUSING: PBT,UL94V-0,BLACK.
- TERMINALS BRACKET: PBT,UL94V-0,BLACK.
- SHIELD: C2680,T=0.20MM,50U"MIN NICKEL PLATING ON ALL AREA.
- TERMINAL: PHOSPHOR BRONZE C5210,T=0.35MM, 6U" GOLD PLATING ON CONTACT AREA.

**USB 2.0:**

- TERMINALS BRACKET: PBT,UL94V-0,BLACK.
- SHIELD: IRON,T=0.20MM,NICKEL PLATING ON ALL AREA.
- TERMINAL: PHOSPHOR BRONZE C5210,T=0.35MM, G/FU" GOLD PLATING ON CONTACT AREA.
- CURRENT RATING : 2AMP.
- DIELECTRIC STRENGTH: 500 VAC AT Sea Level.
- INSULATION RESISTANCE: 1000 MEGA OHMS MIN.
- CONTACT RESISTANCE: 30 MILLIOHMS MAX.

**MECHANICAL:**

- DURABILITY: 750 CYCLES MIN.
- MATING FORCE: 23N MAX.
- OPERATING TEMPERATURE: -40°C~+85°C.
- STORAGE TEMPERATURE: -40°C~+85°C.
- ALL CRITICAL DIMENSIONS WITH "\*"

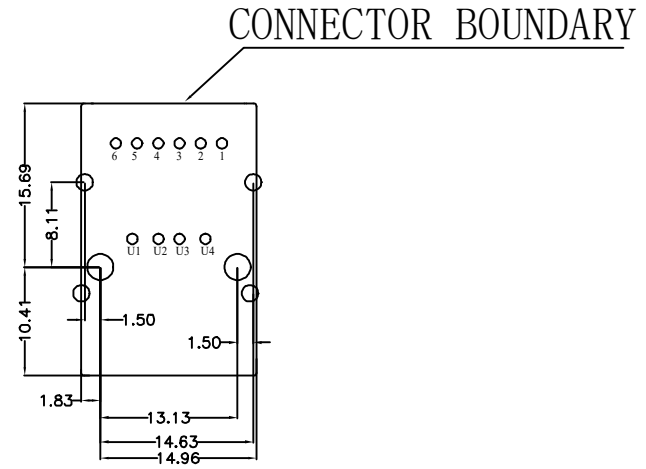
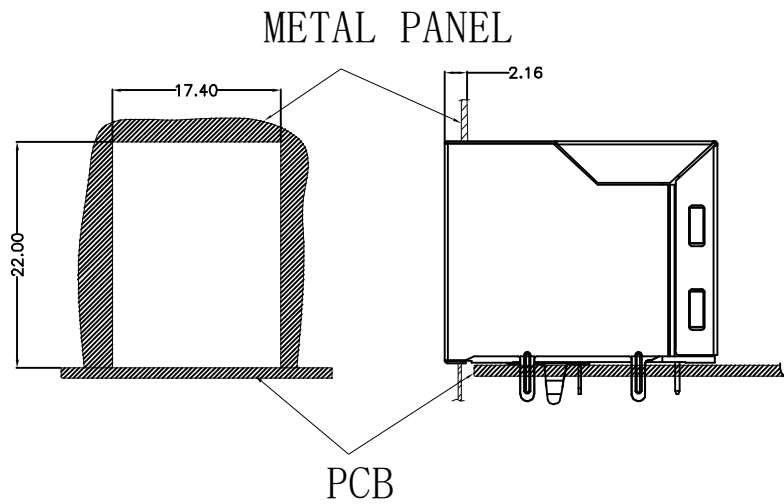
<p>深圳市富港科技有限公司</p>	TITLE:	SIZE	UNITS	GENERAL TOLERANCES		APPROVED BY:
	RJ45+USB2.0 100BASE	A4	MM[INCH]	UNLESS SPECIFIED		CHECKED BY:
	PART NO.:	SACLE	REV	x±0.35	x°±3.0°	
	RJ-611U2B099GWWD	1:1	A0	.x±0.30	.x°±2.0°	DESIGND BY:
	REMARK:	SHEET		.xx±0.25	.xx°±1.5°	KYD
		1/4		.xxx±0.10	.xxx°±1.0°	

REACH & RoHS  
COMPLIANT

REV.	ECN / DESCRIPTION	BY	DATE

RECOMMENDED PANEL CUTOUT (REFERENCE ONLY):

KEEP-OUT AREA (COMPONENT SIDE VIEW):



UNIT: MM / INCH  
TOLERANCES:  $\pm 0.10$  / 0.004  
REFERENCE ONLY

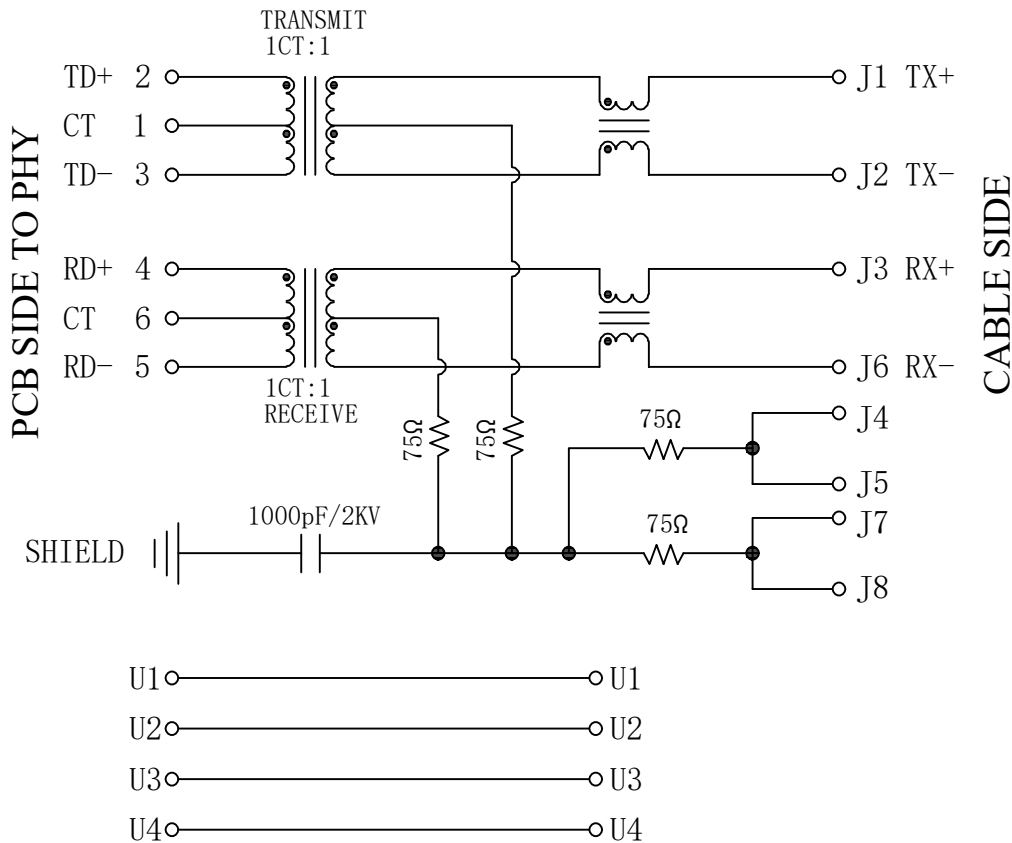
PLUG-IN SIDE  
UNIT: MM / INCH  
TOLERANCES:  $\pm 0.10$  / 0.004

深圳市富港科技有限公司

TITLE: RJ45+USB2.0 100BASE	SIZE A4	UNITS MM[INCH]	GENERAL TOLERANCES UNLESS SPECIFIED		APPROVED BY:
PART NO.: RJ-611U2B099GWWD	SACLE 1:1	REV A0	$x \pm 0.35$	$x^\circ \pm 3.0^\circ$	CHECKED BY:
REMARK:	SHEET 2/4		$.xx \pm 0.25$	$.xx^\circ \pm 1.5^\circ$	DESIGN BY:
			$.xxx \pm 0.10$	$.xxx^\circ \pm 1.0^\circ$	

REACH & RoHS  
COMPLIANT

REV.	ECN / DESCRIPTION	BY	DATE



**Electrical:**

- Turn ratio: 2~3: J1~J2=1CT:1CT(±2%).  
4~5: J3~J6=1CT:1CT(±2%).
- OCL: 350uH Min. at 100KHz 100mV 8mA DC.
- Insertion Loss: -1.0 dB Max 1~100MHz.
- Return loss: -20dB Min 1~10MHz;  
-16dB Min 10~30MHz.  
-12dB Min 30~60MHz.  
-10dB Min 60~80MHz.
- Cross talk: -40dB Min 1~30MHz;  
-35dB Min 30~60MHz;  
-30dB Min 60~100MHz;
- CMR: -30dB Min 1~100MHz;
- Hi-Pot: 1500V AC & 2250V DC  
6S 1mA PRI TO SEC

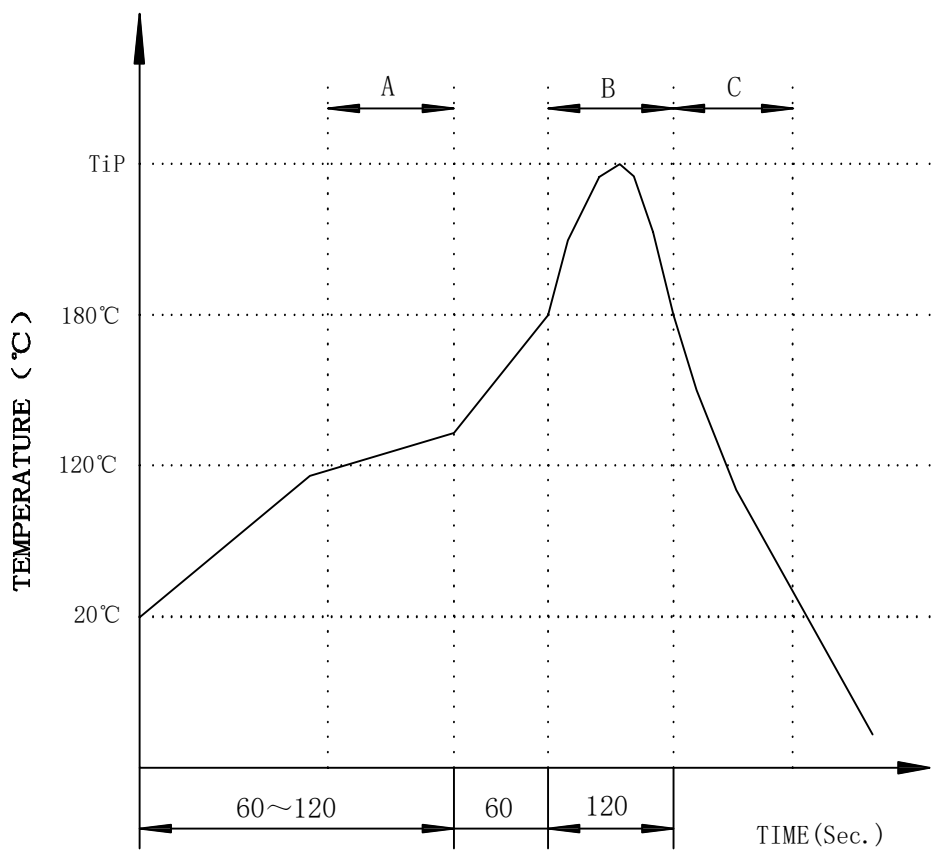
深圳市富港科技有限公司

TITLE: RJ45+USB2.0 100BASE	SIZE A4	UNITS MM[INCH]	GENERAL TOLERANCES UNLESS SPECIFIED		APPROVED BY:
PART NO.: RI-611U2B099GWW	SACLE 1:1	REV A0	x±0.35	x°±3.0°	CHECKED BY:
REMARK:	SHEET 3/4		.xx±0.25	.xx°±1.5°	DESIGN BY:
			.xxx±0.10	.xxx°±1.0°	

REACH & RoHS  
COMPLIANT

# PROFILE OF WAVE SOLDER

REV.	ECN / DESCRIPTION	BY	DATE



A.Preheating B.Soldering C.Gradual Cooling  
 Tip temperature:260±5°C.  
 Tip temperature time:5Sec Max.  
 Tip melting point of Sn96.5/Ag3/Cu0.5:217°C.

Remarks: after wave soldering, the plastic  
 positioning columns of the product which under the  
 PCB will be slightly melted, but it won't affect its  
 function.

深圳市富港科技有限公司

TITLE: RJ45+USB2.0 100BASE	SIZE A4	UNITS MM[INCH]	GENERAL TOLERANCES UNLESS SPECIFIED		APPROVED BY:
PART NO.: RJ-611U2B099GWWD	SACLE 1:1	REV A0	x±0.35	x°±3.0°	CHECKED BY:
REMARK:	SHEET 4/4		.xx±0.25	.xx°±1.5°	DESIGND BY:
			.xxx±0.10	.xxx°±1.0°	