

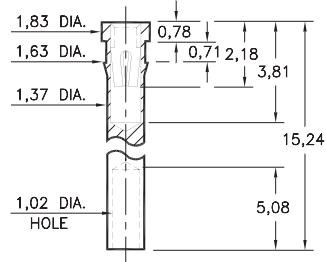
PIN RECEPTACLES

FOR 0,38 - 0,64 DIAMETER PINS

1707

1707-0-19-XX-30-XX-10-0

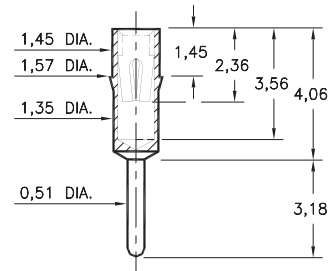
Press-fit in 1,55 mounting hole
Wire Crimp Termination. Accepts wire sizes 22 AWG Max. / 24 AWG Min.



0240

0240-0-15-XX-30-XX-04-0

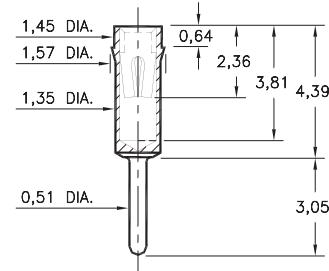
Press-fit in 1,49 mounting hole



0307

0307-0-15-XX-30-XX-04-0

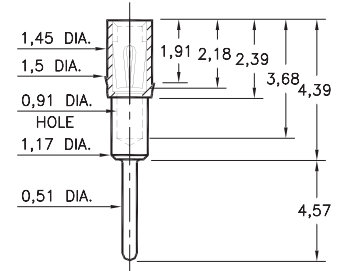
Press-fit in 1,5 mounting hole



1753

1753-0-15-XX-30-XX-04-0

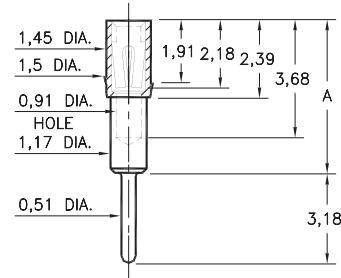
Press-fit in 1,45 mounting hole



1705/1706/1762

17XX-0-15-XX-3X-XX-04-0

Press-fit in 1,45 mounting hole

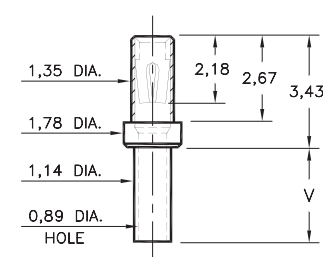


Basic Part Number	Height A
1705-0	4,19
1706-0	5,54
1762-0	7,62

0672

0672-X-15-XX-30-XX-10-0

Swage mount in 1,24 hole



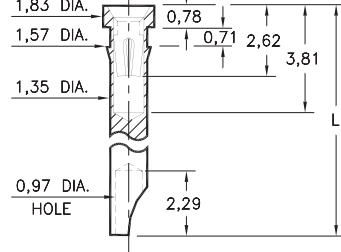
Basic Part Number	Board Thickness	Length V
0672-1	0,79	1,32
0672-2	1,57	2,13
0672-3	2,39	2,92
0672-4	3,18	3,71

1024/1104

1XX4-0-18-XX-30-XX-10-0

Press-fit in 1,5 mounting hole

Accepts wire sizes up to 0,71 dia.

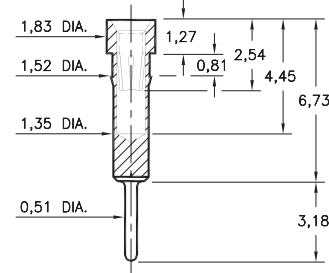


Basic Part Number	Length L
1024-0	7,37
1104-0	11,43

0498

0498-0-15-XX-35-XX-04-0

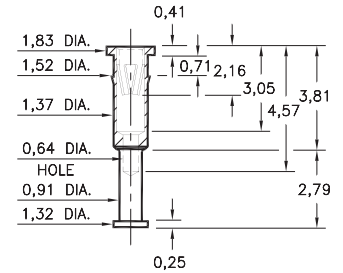
Press-fit in 1,45 mounting hole



8131

8131-0-15-XX-30-XX-10-0

Press-fit in 1,45 mounting hole



SPECIFICATIONS:

Shell Material: Brass Alloy 360, 1/2 Hard

Contact Material: Beryllium Copper Alloy 172, HT

Dimensions: Millimeters

Tolerances On: Lengths: ± 0,13

Diameters: ± 0,051

Angles: ± 2°



ORDER CODE: **XXXX - X - 1X - XX - XX - XX - XX - 0**

BASIC PART #

SPECIFY SHELL FINISH:

- 01 5,08µm TIN/LEAD OVER NICKEL
- ◆ 80 5,08µm TIN OVER NICKEL (RoHS)
- ◆ 15 0,25µm GOLD OVER NICKEL (RoHS)

SPECIFY CONTACT FINISH:

- 02 2,54µm TIN/LEAD OVER NICKEL
- ◆ 84 2,54µm TIN OVER NICKEL (RoHS)
- ◆ 27 0,76µm GOLD OVER NICKEL (RoHS)

SELECT CONTACT:

#30 or #35 CONTACT (DATA ON PAGE 253 & 254)

(For alternate contact choices, see groups B and C on page 248)



Mill-Max Mfg. Corp. • 190 Pine Hollow Road, P.O. Box 300, Oyster Bay, NY 11771 • 516-922-6000 • Fax: 516-922-9253 • www.mill-max.com