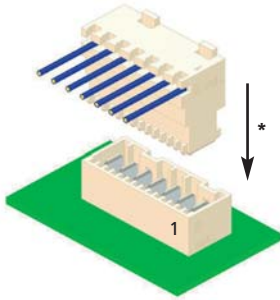
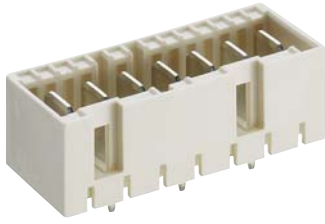
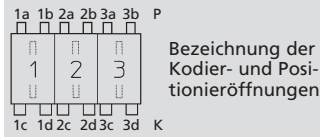


Kodierungen nach RAST 5 für Macromodul-Messerleiste 3641
Keyings according to RAST 5 for Macromodul tab header 3641
Codages suivant RAST 5 pour réglette à couteaux Macromodul 3641



3641

Für diese Messerleiste schlägt Lumberg die unten dargestellten Kodierungen vor. Weitere Kodierungen sind auf Anfrage möglich.



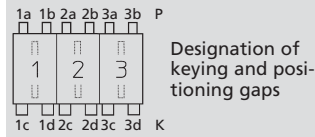
Steckweise indirekt, mit RAST-5-Steckverbinder:

Kodierung durch Kodiernasen am Steckverbinder und entsprechende Öffnungen an der Messerleiste

Alle Zeichnungen in Steckrichtung (*) gesehen

3641

For this tab header, Lumberg proposes the keyings listed below. Further keyings are possible on request.



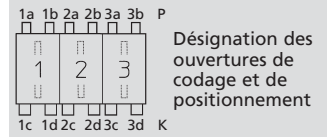
Indirect connection, with RAST 5 connector:

Keying by means of keying noses at the connector and matching gaps at the tab header

All drawings in view of mating direction (*)

3641

Pour cette réglette à couteaux Lumberg propose les codages ci-dessous. Autres codages sont possibles sur demande.



Connexion indirecte, avec connecteur RAST 5 :

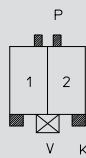
Codage par plots de codage au connecteur et ouvertures correspondantes à la réglette à couteaux

Tous dessins vus dans le sens d'enfichage (*)

2

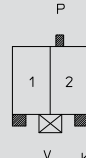
2-polig
2 poles
2 pôles

3641 02 K01



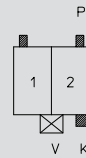
Kodierung/keying/codage:
P 1b 2a, K 1c 2d, V 1/2

3641 02 K03



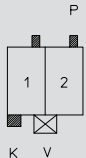
Kodierung/keying/codage:
P 2a, K 1c 2d, V 1/2

3641 02 K05



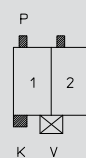
Kodierung/keying/codage:
P 1a 2a, K 2d, V 1/2

3641 02 K09



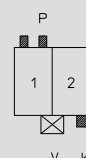
Kodierung/keying/codage:
P 1b 2b, K 1c, V 1/2

3641 02 K10



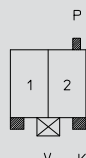
Kodierung/keying/codage:
P 1a 2a, K 1c, V 1/2

3641 02 K13



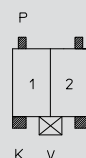
Kodierung/keying/codage:
P 1a, K 2d, V 1/2

3641 02 K15



Kodierung/keying/codage:
P 2b, K 1c 2d, V 1/2

3641 02 K48



Kodierung/keying/codage:
P 1a 2b, K 1c 2d, V 1/2

3641 02 K86

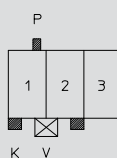


Kodierung/keying/codage:
P 1a 2a, K 1d 2c

3

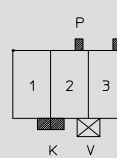
3-polig
3 poles
3 pôles

3641 03 K01



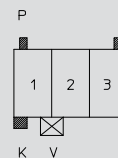
Kodierung/keying/codage:
P 1b, K 1c 2d, V 1/2

3641 03 K02



Kodierung/keying/codage:
P 2b 3b, K 1d 2c, V 2/3

3641 03 K06

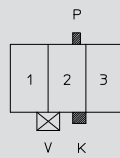


Kodierung/keying/codage:
P 1a 3b, K 1c, V 1/2

3

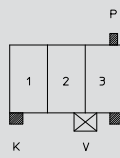
3-polig (Fortsetzung)
 3 poles (continued)
 3 pôles (suite)

3641 03 K08



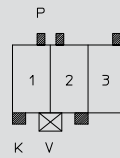
Kodierung/keying/codage:
 P 2b, K 2d, V 1/2

3641 03 K10



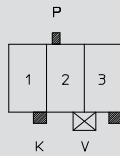
Kodierung/keying/codage:
 P 3b, K 1c 3d, V 2/3

3641 03 K32



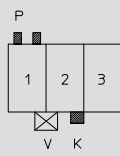
Kodierung/keying/codage:
 P 1b 2a 3b, K 1c 2d, V 1/2

3641 03 K44



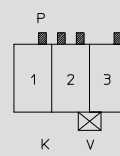
Kodierung/keying/codage:
 P 2a, K 1d 3d, V 2/3

3641 03 K53



Kodierung/keying/codage:
 P 1ab, K 2d, V 1/2

3641 03 K124

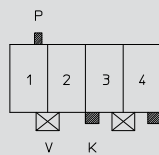


Kodierung/keying/codage:
 P 1b 2ab 3b, V 2/3

4

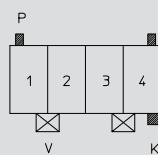
4-polig
 4 poles
 4 pôles

3641 04 K01



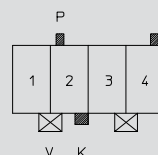
Kodierung/keying/codage:
 P 1b, K 3c 4d, V 1/2 3/4

3641 04 K03



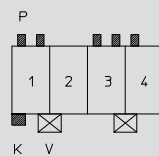
Kodierung/keying/codage:
 P 1a 4b, K 4d, V 1/2 3/4

3641 04 K07



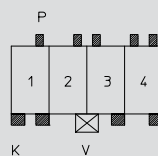
Kodierung/keying/codage:
 P 2a 4b, K 2d, V 1/2 3/4

3641 04 K17



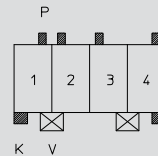
Kodierung/keying/codage:
 P 1ab 3ab 4a, K 1c, V 1/2 3/4

3641 04 K19



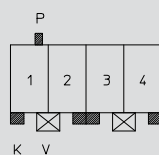
Kodierung/keying/codage:
 P 1b 2b 3a 4ab, K 1cd 3d 4d, V 2/3

3641 04 K37



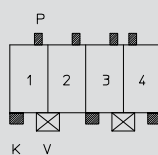
Kodierung/keying/codage:
 P 1b 2a 3a 4b, K 1c 4d, V 1/2 3/4

3641 04 K102



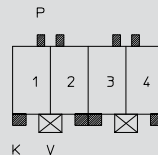
Kodierung/keying/codage:
 P 1b, K 1c 2d 3c 4d, V 1/2 3/4

3641 04 K120



Kodierung/keying/codage:
 P 1b 2b 3b 4a, K 1c 3c 4d, V 1/2 3/4

3641 04 K142

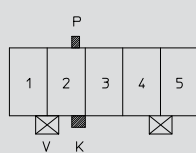


Kodierung/keying/codage:
 P 1b 2a 3b 4a, K 1c 2d 3c 4d, V 1/2 3/4

5

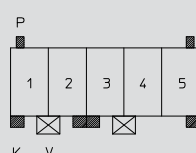
5-polig
 5 poles
 5 pôles

3641 05 K02



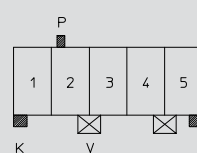
Kodierung/keying/codage:
 P 2b, K 2d, V 1/2 4/5

3641 05 K31



Kodierung/keying/codage:
 P 1a 5b, K 1c 2d 3c 5d, V 1/2 3/4

3641 05 K43

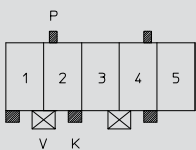


Kodierung/keying/codage:
 P 2a, K 1c 5d, V 2/3 4/5

5

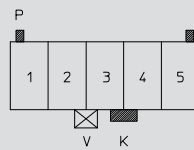
5-polig (Fortsetzung)
 5 poles (continued)
 5 pôles (suite)

3641 05 K44



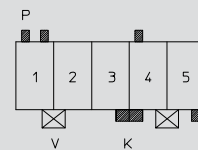
Kodierung/keying/codage:
 P 2a 4b, K 1c 2d 4d, V 1/2 3/4

3641 05 K50



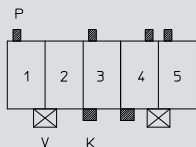
Kodierung/keying/codage:
 P 1a 5b, K 3d 4c, V 2/3

3641 05 K64



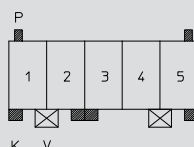
Kodierung/keying/codage:
 P 1ab 4a, K 3d 4c 5d, V 1/2 4/5

3641 05 K73



Kodierung/keying/codage:
 P 1a 3a 4b 5a, K 3c 4c, V 1/2 4/5

3641 05 K86

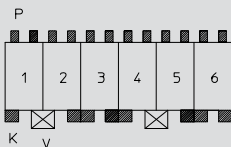


Kodierung/keying/codage:
 P 1a 5b, K 1c 2d 3c 5d, V 1/2 4/5

6

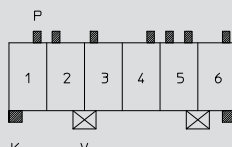
6-polig
 6 poles
 6 pôles

3641 06 K00



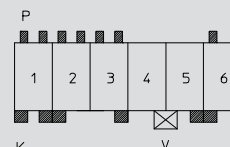
Kodierung/keying/codage:
 P 1ab 2ab 3ab 4ab 5ab 6ab, K 1c 2d 3cd 4c 5d 6cd, V 1/2 4/5

3641 06 K15



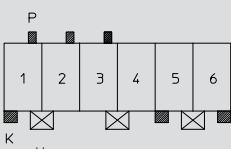
Kodierung/keying/codage:
 P 1b 2a 3a 4b 5ab 6b, K 1c 6d, V 2/3 5/6

3641 06 K21



Kodierung/keying/codage:
 P 1ab 2ab 3ab 6a, K 1cd 2c 3d 5d 6c, V 4/5

3641 06 K51

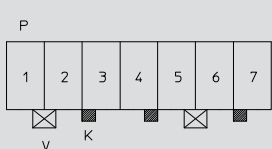


Kodierung/keying/codage:
 P 1b 2b 3b, 1c 5c 6d, V 1/2 3/4 5/6

7

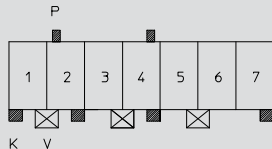
7-polig
 7 poles
 7 pôles

3641 07 K01



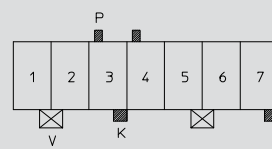
Kodierung/keying/codage:
 K 3c 4d 7c, V 1/2 5/6

3641 07 K23



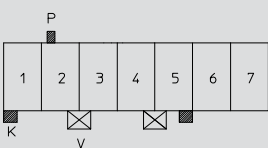
Kodierung/keying/codage:
 P 2a 4b, K 1c 2d 4d 7d, V 1/2 3/4 5/6

3641 07 K30



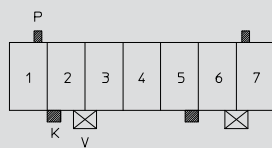
Kodierung/keying/codage:
 P 3a 4a, K 3d 7d, V 1/2 5/6

3641 07 K41



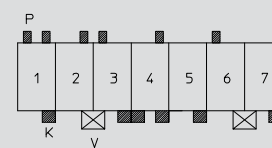
Kodierung/keying/codage:
 P 2a, K 1c 5d, V 2/3 4/5

3641 07 K48



Kodierung/keying/codage:
 P 1b 7a, K 2c 5d, V 2/3 6/7

3641 07 K59

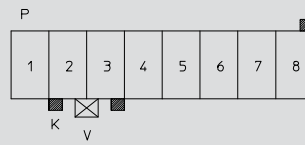


Kodierung/keying/codage:
 P 1ab 2b 3a 4b 6a, K 1d 3d 4cd 5d 7d, V 2/3 6/7

8

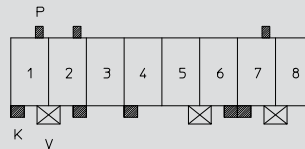
8-polig
 8 poles
 8 pôles

3641 08 K49



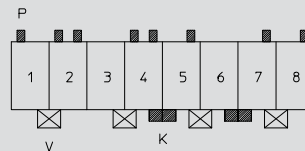
Kodierung/keying/codage:
 P 8b, K 2c 3d, V 2/3

3641 08 K57



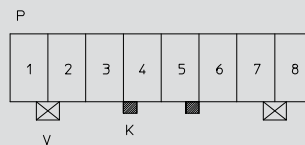
Kodierung/keying/codage:
 P 1b 2b 7b, K 1c 2d 4c 6d 7c, V 1/2 5/6 7/8

3641 08 K58



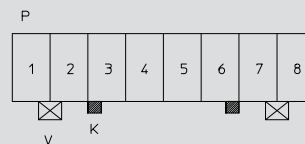
Kodierung/keying/codage:
 P 1a 2ab 4ab 5b 7b 8b, K 4d 5c 6d 7c, V 1/2 3/4 5/6 7/8

3641 08 K62



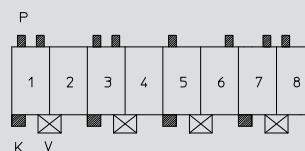
Kodierung/keying/codage:
 K 4c 5d, V 1/2 7/8

3641 08 K63



Kodierung/keying/codage:
 K 3c 6d, V 1/2 7/8

3641 08 K77

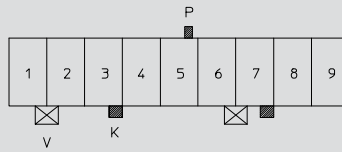


Kodierung/keying/codage:
 P 1ab 3ab 5a 6b 7b 8a, K 1c 3c 5c 7c, V 1/2 3/4 5/6 7/8

9

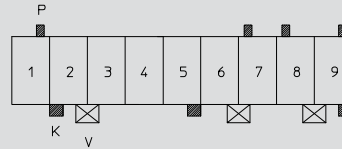
9-polig
 9 poles
 9 pôles

3641 09 K04



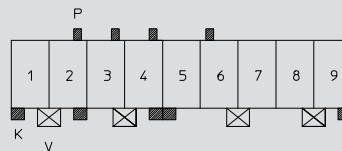
Kodierung/keying/codage:
 P 5b, K 3d 7d, V 1/2 6/7

3641 09 K48



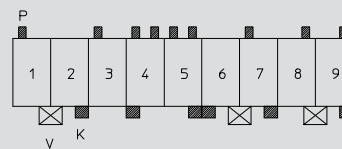
Kodierung/keying/codage:
 P 1b 7a 8a 9b, K 2c 5d 9d, V 2/3 6/7 8/9

3641 09 K49



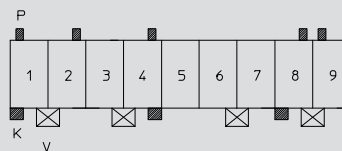
Kodierung/keying/codage:
 P 2b 3b 4b 6a, K 1c 2d 4d 5c 9d, V 1/2 3/4 6/7 8/9

3641 09 K52



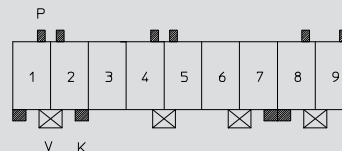
Kodierung/keying/codage:
 P 1a 3a 4ab 5ab 7a 8b 9b, K 2d 4c 5d 6c 7d 9d, V 1/2 6/7 8/9

3641 09 K57



Kodierung/keying/codage:
 P 1a 2b 4b 8b 9a, K 1c 4d 8c, V 1/2 3/4 6/7 8/9

3641 09 K58

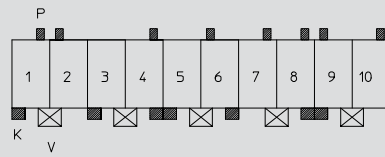


Kodierung/keying/codage:
 P 1b 2a 4b 5a 8b 9b, K 1c 2d 7d 8c, V 1/2 4/5 6/7 8/9

10

10-polig
 10 poles
 10 pôles

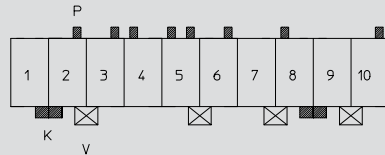
3641 10 K64



Kodierung/keying/codage:

P 1b 2a 4b 6a 7b 8b 9a 10b, K 1c 3c 4d 5c 6d 8d 9c, V 1/2 3/4 5/6 7/8 9/10

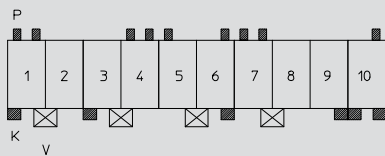
3641 10 K70



Kodierung/keying/codage:

P 2b 3b 4a 5ab 6b 8a 10b, K 1d 2c 8d 9c, V 2/3 5/6 7/8 9/10

3641 10 K76



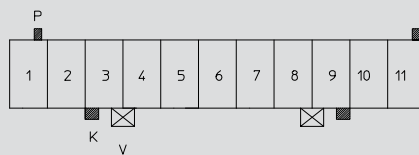
Kodierung/keying/codage:

P 1ab 4ab 5a 6b 7ab 10b, K 1c 3c 6d 9d 10cd, V 1/2 3/4 5/6 7/8

11

11-polig
 11 poles
 11 pôles

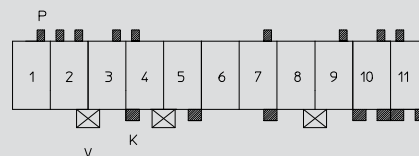
3641 11 K43



Kodierung/keying/codage:

P 1b 11b, K 3c 9d, V 3/4 8/9

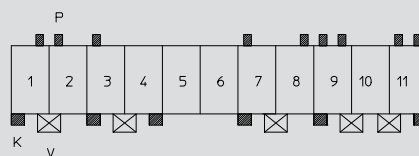
3641 11 K60



Kodierung/keying/codage:

P 1b 2ab 3b 4a 7b 9b 10b 11a, K 4c 5d 7d 10cd 11cd, V 2/3 4/5 8/9

3641 11 K64



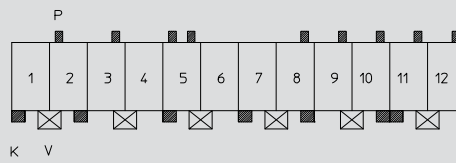
Kodierung/keying/codage:

P 1b 2a 3a 7a 8b 9ab 11ab, K 1c 3c 4d 7c 9c 11d, V 1/2 3/4 7/8 9/10 10/11

12

12-polig
12 poles
12 pôles

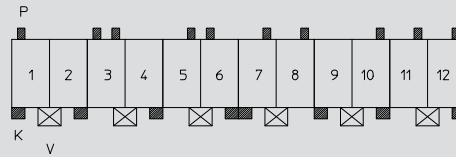
3641 12 K27



Kodierung/keying/codage:

P 2a 3b 5ab 8b 9b 10b 11b 12b, K 1c 2d 5c 7c 8d 10d 11c, V 1/2 3/4 5/6 7/8 9/10 11/12

3641 12 K59



Kodierung/keying/codage:

P 1a 3ab 5b 6a 7b 8b 10b 11b 12b, K 1c 2d 4d 6d 7c 9c 10d 12d, V 1/2 3/4 5/6 7/8 9/10 11/12