

Pitch:0.80x1.20mm(0.031 " x0.047 ")
 Male Header Dual Rows Straight Type

ELETE
 Professional Connecting Solution
 HMFDS10-Series

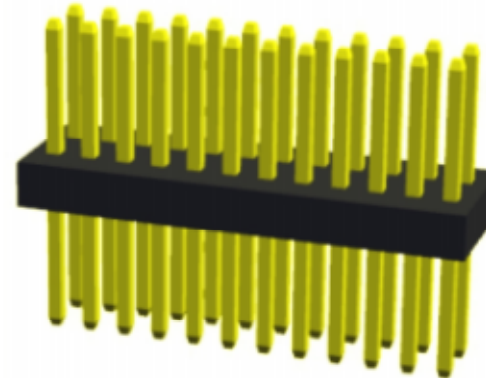
Specifications

Current Rating:0.5 Ampere
 Insulation Resistance:500MΩ Min
 Dielectric Withstanding:200V AC
 Contact Resistance:20mΩ Max
 Operating Temperature:-40℃ to +105℃

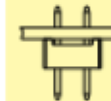
Materials

Contact Material: Brass
 Insulation Material: Polyester,UL 94V-0
 LCP/NL6T

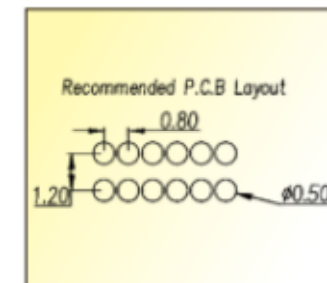
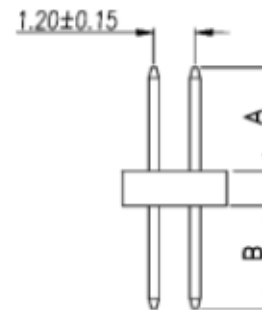
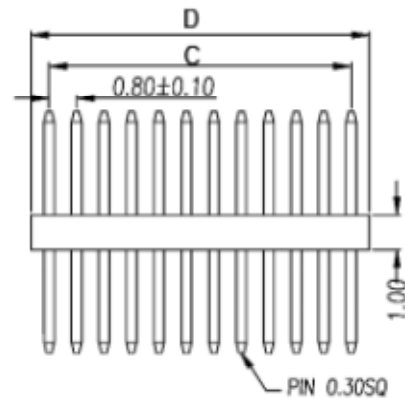
All material RoHS&Reach Compliant
 Halogen-free is available



Mating with



HFFDM30



No. of Pins/Ro	Dimension Information		No. of Pins/Ro	Dimension Information		No. of Pins/Ro	Dimension Information		No. of Pins/Ro	Dimension Information	
	C	D		C	D		C	D		C	D
02	0.80	1.60	12	8.80	9.60	22	16.80	17.60	32	24.80	25.60
03	1.60	2.40	13	9.60	10.40	23	17.60	18.40	33	25.60	26.40
04	2.40	3.20	14	10.40	11.20	24	18.40	19.20	34	26.40	27.20
05	3.20	4.00	15	11.20	12.00	25	19.20	20.00	35	27.20	28.00
06	4.00	4.80	16	12.00	12.80	26	20.00	20.80	36	28.00	28.80
07	4.80	5.60	17	12.80	13.60	27	20.80	21.60	37	28.80	29.60
08	5.60	6.40	18	13.60	14.40	28	21.60	22.40	38	29.60	30.40
09	6.40	7.20	19	14.40	15.20	29	22.40	23.20	39	30.40	31.20
10	7.20	8.00	20	15.20	16.00	30	23.20	24.00	40	31.20	32.00
11	8.00	8.80	21	16.00	16.80	31	24.00	24.80			