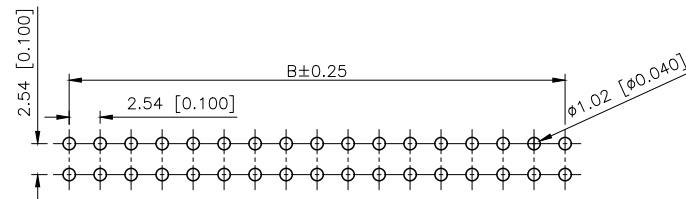
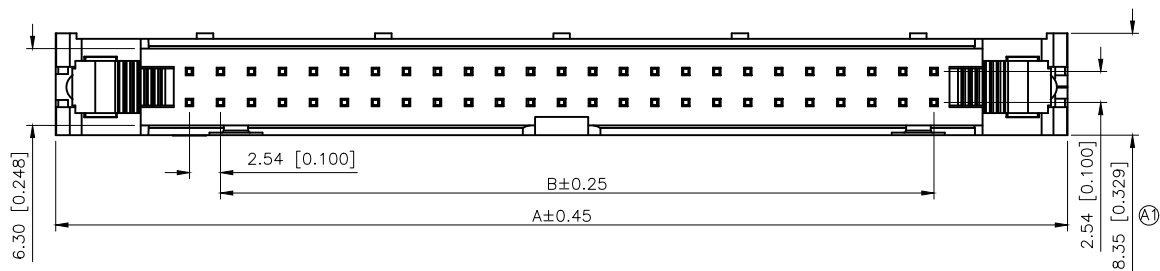


REVISIONS					
REV.	ECN NO.	LOCATION	DESCRIPTION	DATE	DESIGN
A0	N/A		INITIAL RELEASE	/	/
A1	N/A	(A)X5	产品外观及尺寸变更, 图面升级整理图面	2025.04.23	阿树

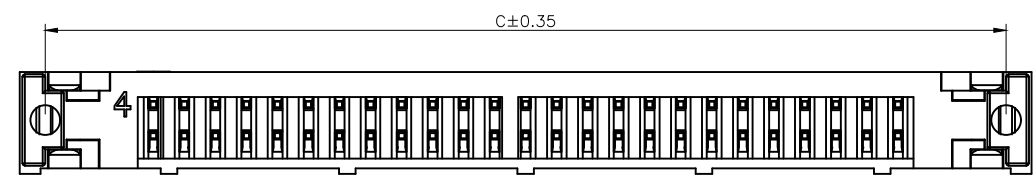
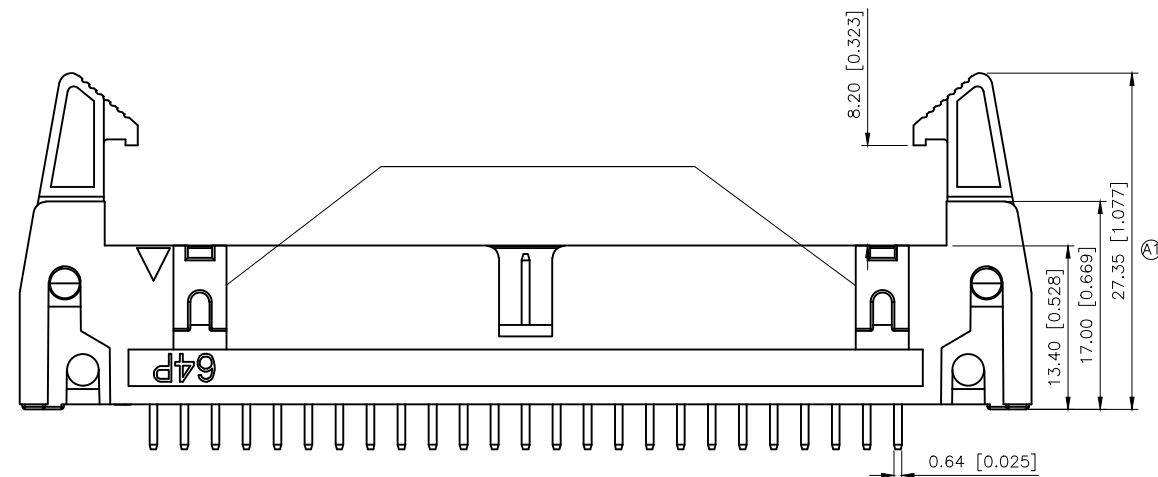
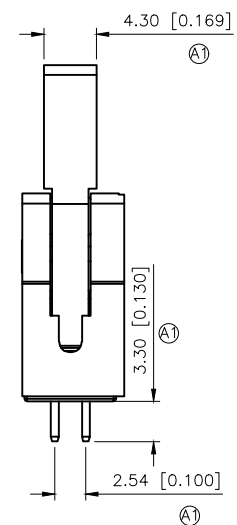


PCB LAYOUT

Specifications:
 规格:
 Voltage rating:250V AC/DC
 额定电压: 250V AC/DC
 Current rating:3A AC/DC
 额定电流: 3A AC/DC
 Withstanding voltage:600V AC/minute
 耐受电压: 600V AC/分钟
 Temperature range:-40℃~+125℃
 温度范围: -40℃~+125℃
 Insulation resistance:1000MΩ min
 绝缘电阻: 1000MΩ Min
 Contact resistance:20mΩ Max
 接触电阻: 20mΩ Max

PART NO.:
X9555 W V-2xXX A-6T V01
 ① ② ③ ④ ⑤ ⑥ ⑦

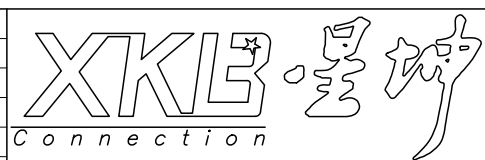
①Series No
 ②Category:W-Wafer
 ③Welding Board Angle:V-Stright 180°
 ④Row No.Pin No:2xXX-2x05~2x32P
 ⑤Special No:A-Ejector Header
 ⑥Material:6T-PA6T;
 ⑦Plating:V01-Gold Flash;
 SN-Tin Plated



poles	Dimensions(mm)			poles	Dimensions(mm)		
	A	B	C		A	B	C
06	26.92	5.08	22.86	26	52.32	30.48	48.26
08	29.46	7.62	25.40	30	57.40	35.56	53.34
10	32.00	10.16	27.94	34	62.48	40.64	58.42
12	34.54	12.70	30.48	40	70.10	48.26	66.04
14	37.08	15.24	33.02	50	82.80	60.96	78.74
16	39.62	17.78	35.56	60	95.50	73.66	91.44
20	44.70	22.86	40.64	64	78.74	78.74	96.52
24	49.78	27.94	45.72				

X9555WV-2xXXA-6TV01	PA6T	Brass	X9555H2-2xXXX
PART NO	Material	Material(Pin)	Suitable XKB Housing

AuGLAR	±5°
X.	±0.40
X.x	±0.30
X.xx	±0.20
X.xxx	±0.15
UNSPECIFIED TOLERANCES	



DESIGN	阿树	VIEW:	
CHECKED		UNIT:	mm/in
APPROVED		SIZE:	A4

MODEL TYPE:	2.54mm Horn type connector
PART NO.:	X9555WV-2xXXA-6TV01
DWG NO.:	

XKB INDUSTRIAL PRECISION CO.,LIMITED