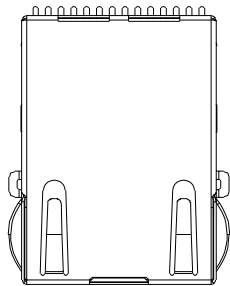
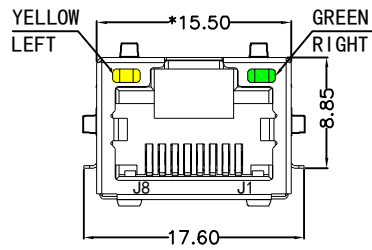


REACH & RoHS
COMPLIANT

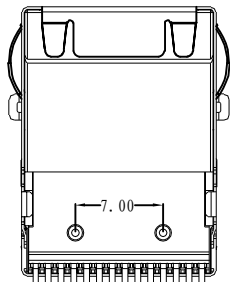
REV.	ECN / DESCRIPTION	BY	DATE



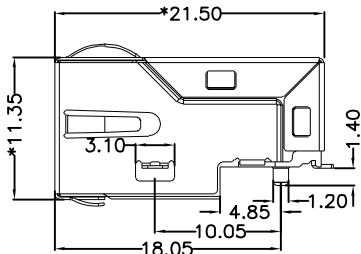
TOP VIEW



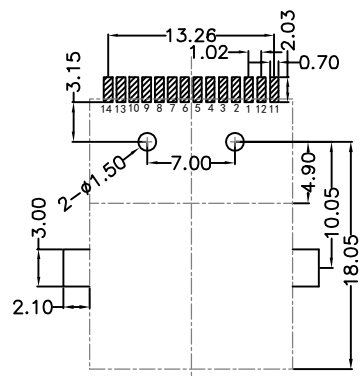
FRONT VIEW



BOTTOM VIEW



RIGHT SIDE VIEW



RECOMMENDED PCB LAYOUT
VIEWED FROM COMPONENT SIDE

MATERIAL:

HOUSING: LCP,UL94V-0,BLACK.
 TERMINALS BRACKET: LCP,UL94V-0,BLACK.
 SHIELD: C2680,T=0.20MM,NICKEL PLATING ON ALL AREA.
 TERMINAL: PHOSPOR BRONZE C5191,T=0.35MM,
 6U" GOLD PLATING ON CONTACT AREA.

MECHANICAL:

DURABILITY: 750 CYCLES MIN.
 MATING FORCE: 23N MAX.
 OPERATING TEMPERATURE: -40°C~+85°C.
 STORAGE TEMPERATURE: -40°C~+85°C.
 ALL CRITICAL DIMENSIONS WITH "*"

深圳市富港科技有限公司

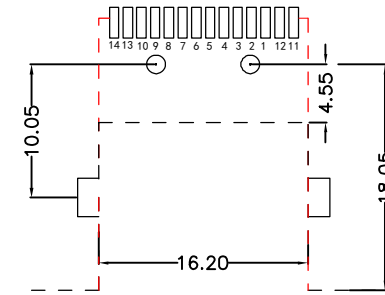
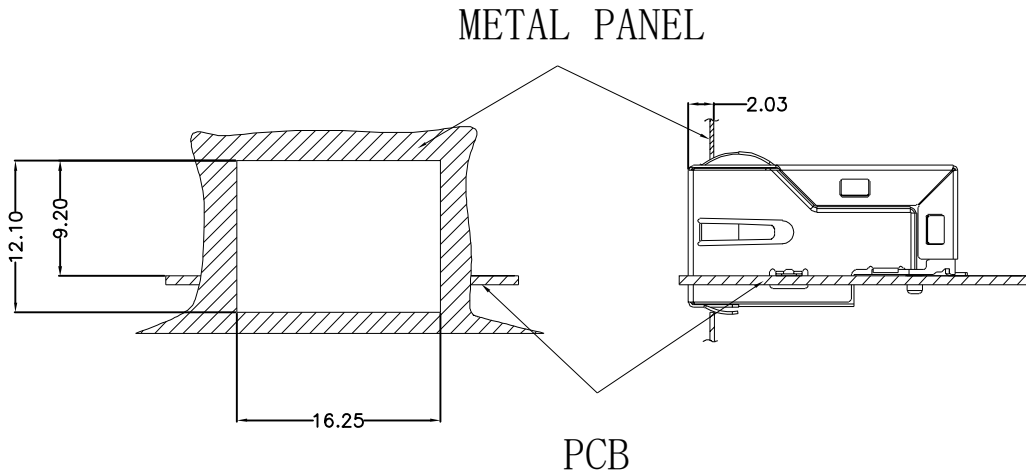
TITLE: TAB-UP 1X1 1000BASE 贴片	SIZE A4	UNITS MM[INCH]	GENERAL TOLERANCES UNLESS SPECIFIED		APPROVED BY:				
			PART NO.: RJ-211Q106DB1A7CBS057	SACLE 1:1		REV A0	x±0.35	x°±3.0°	CHECKED BY:
							.xx±0.25	.xx°±1.5°	
REMARK:	SHEET 1/4		.xxx±0.10	.xxx°±1.0°	DESIGND BY: KYD				

REACH & RoHS
COMPLIANT

REV.	ECN / DESCRIPTION	BY	DATE

Suggested Panel Opening:

Keep-Out Area (Component Side View):



Plug In Side

UNIT: mm / inch
Tolerances: ± 0.10 / 0.004

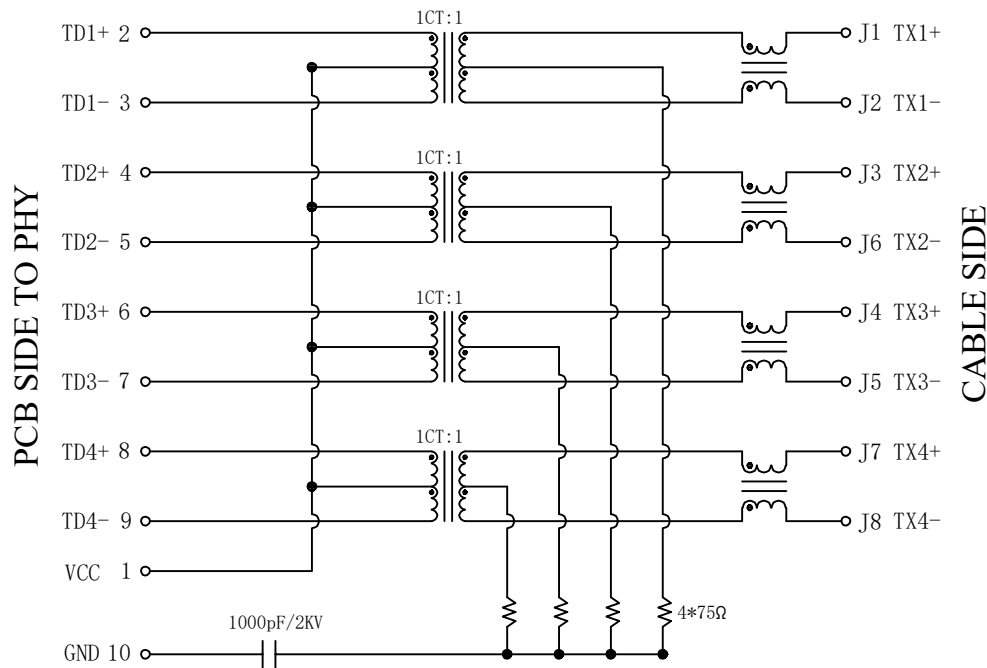
UNIT: mm / inch
Tolerances: ± 0.10 / 0.004

深圳市富港科技有限公司

TITLE: TAB-UP 1X1 1000BASE 贴片	SIZE A4	UNITS MM[INCH]	GENERAL TOLERANCES UNLESS SPECIFIED		APPROVED BY:				
			PART NO.: RJ-211Q106DB1A7CBS057	SACLE 1:1		REV A0	$x \pm 0.35$	$x^\circ \pm 3.0^\circ$	CHECKED BY:
							$.x \pm 0.30$	$.x^\circ \pm 2.0^\circ$	
							$.xx \pm 0.25$	$.xx^\circ \pm 1.5^\circ$	
$.xxx \pm 0.10$	$.xxx^\circ \pm 1.0^\circ$	DESIGN BY:							
REMARK:	SHEET 2/4								

REACH & RoHS
COMPLIANT

REV.	ECN / DESCRIPTION	BY	DATE

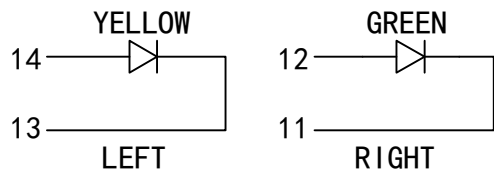


Electrical:

1. Turn ratio: 2~3: J1~J2=1CT:1CT(±2%).
4~5: J3~J6=1CT:1CT(±2%).
6~7: J1~J2=1CT:1CT(±2%).
8~9: J3~J6=1CT:1CT(±2%).
2. OCL: 350uH Min. at 100KHz 100mV 8mA DC.
3. Insertion Loss: -1.0 dB Max 1~100MHz.
-1.2 dB Max 100~125MHz.
4. Return loss: -16dB Min 1~40MHz;
-12dB Min 40~60MHz.
-10dB Min 60~80MHz.
-8dB Min 80~100MHz.
5. Cross talk: -30dB Min 1~100MHz;
6. CMR: -30dB Min 1~100MHz;
7. Hi-Pot: 2250V DC 6S 1mA PRI TO SEC

LED Specification

Standard LED Color	LED Wavelength	Foward(A)	Foward(V)
Green	565nm	20mA	2.2-2.4V
Yellow	590nm	20mA	2.1-2.5V



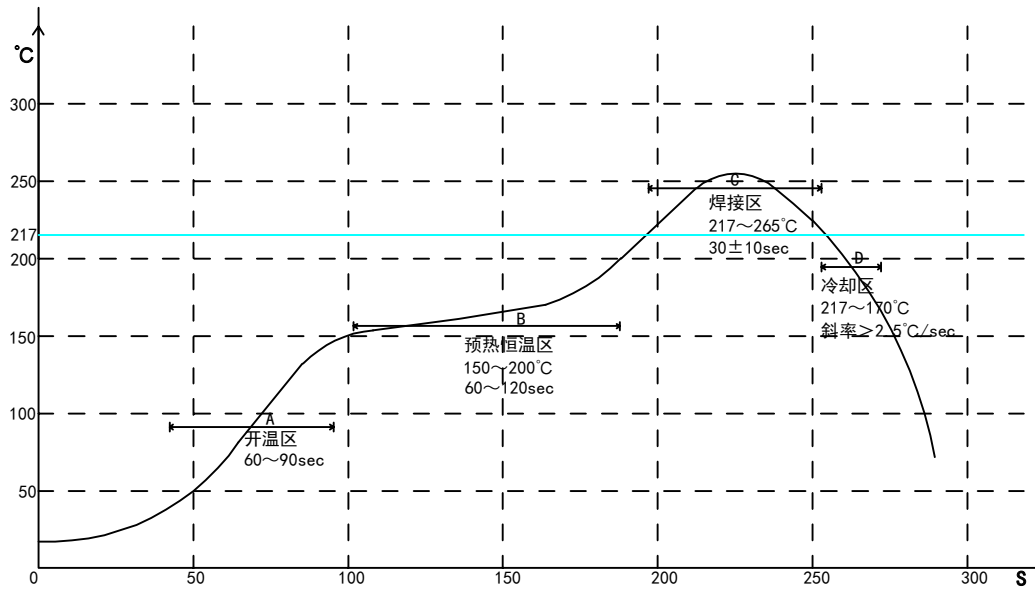
深圳市富港科技有限公司

TITLE: TAB-UP 1X1 1000BASE 贴片	SIZE A4	UNITS MM[INCH]	GENERAL TOLERANCES UNLESS SPECIFIED		APPROVED BY:
PART NO.: RJ-211Q106DB1A7CBS057	SACLE 1:1	REV A0	x±0.35	x°±3.0°	CHECKED BY:
REMARK:	SHEET 3/4		.xx±0.25	.xx°±1.5°	DESIGND BY:
			.xxx±0.10	.xxx°±1.0°	

REACH & RoHS
COMPLIANT

REV.	ECN / DESCRIPTION	BY	DATE

PROFILE OF REFLOW SOLDERING



A. Temperature range of open
 B. Preheat temperature zone
 C. The welding zone
 D. The cooling zone
 Tip temperature: 265±5°C.
 Tip temperature time: 30±10Sec.
 Tip melting point of Sn96.5/Ag3/Cu0.5.

深圳市富港科技有限公司

TITLE: TAB-UP 1X1 1000BASE 贴片	SIZE A4	UNITS MM[INCH]	GENERAL TOLERANCES UNLESS SPECIFIED		APPROVED BY:
PART NO.: RJ-211Q106DB1A7CBS057	SACLE 1:1	REV A0	x±0.35	x°±3.0°	CHECKED BY:
REMARK:	SHEET 4/4		.xx±0.25	.xx°±1.5°	DESIGND BY:
			.xxx±0.10	.xxx°±1.0°	