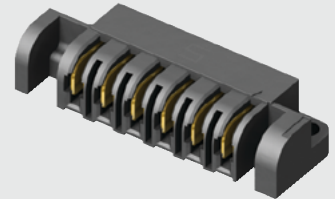


FMPT-06-01-L-S-V



FMPS-06-01-L-S-RA-SD

(5.00 mm) .1969"

**FMPS, FMPT SERIES**

# "HINGING" 30 A POWER HEADER & SOCKET

## SPECIFICATIONS

For complete specifications see [www.samtec.com?FMPS](http://www.samtec.com?FMPS) or [www.samtec.com?FMPT](http://www.samtec.com?FMPT)

**Insulator Material:**

Black LCP

**Terminal Material:**

Copper Alloy

**Plating:** Sn or Au over 50 μ" (1.27 μm) Ni

**Operating Temp Range:**

-55 °C to +105 °C with Tin;

-55 °C to +125 °C with Gold

**Voltage Rating:**

525 VAC/742 VDC

**Standard Creepage:**

FMPS: (3.67 mm) .144"

FMPT: (6.53 mm) .257"

**Standard Clearance:**

(2.71 mm) .106"

**RoHS Compliant:** Yes

**Lead-Free Solderable:** Yes

FMPT/FMPS	
PINS	CURRENT RATING (PER CONTACT)
1	26.7 A
2	22.9 A
3	19.1 A
4	17.6 A
8	15.8 A

-L PLATING

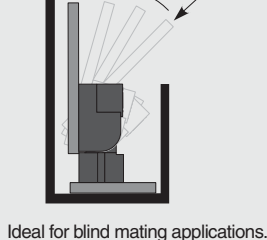
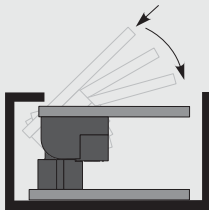
## RECOGNITIONS

For complete scope of recognitions see [www.samtec.com/quality](http://www.samtec.com/quality)



FILE NO. E111594

## APPLICATION



Ideal for blind mating applications.

**Note:** Some sizes, styles and options are non-standard, non-returnable.

<b>FMPS</b>	<b>NO. OF POSITIONS</b>	<b>01</b>	<b>PLATING OPTION</b>	<b>S</b>	<b>RA</b>	<b>OPTION</b>																				
<b>02, 04, 06, 08</b> (Standard sizes)		<p><b>-L</b> = 10 μ" (0.25 μm) Gold on contact, Matte Tin on tail</p> <p><b>-T</b> = Matte Tin</p>		<p><b>-SD</b> = Screw Down (Not Available with -L)</p> <p><b>-LC</b> = Locking Clip (Manual placement required) (Not Available with -SD)</p>																						
		<table border="1"> <thead> <tr> <th>NUMBER OF POSITIONS</th> <th>A</th> <th>B</th> <th>C</th> </tr> </thead> <tbody> <tr> <td>-02</td> <td>(22.63) .891</td> <td>(16.28) .641</td> <td>(15.63) .615</td> </tr> <tr> <td>-04</td> <td>(32.63) 1.285</td> <td>(26.28) 1.035</td> <td>(25.63) 1.009</td> </tr> <tr> <td>-06</td> <td>(42.63) 1.678</td> <td>(36.28) 1.428</td> <td>(35.63) 1.403</td> </tr> <tr> <td>-08</td> <td>(52.63) 2.072</td> <td>(46.28) 1.822</td> <td>(45.63) 1.796</td> </tr> </tbody> </table>		NUMBER OF POSITIONS	A	B	C	-02	(22.63) .891	(16.28) .641	(15.63) .615	-04	(32.63) 1.285	(26.28) 1.035	(25.63) 1.009	-06	(42.63) 1.678	(36.28) 1.428	(35.63) 1.403	-08	(52.63) 2.072	(46.28) 1.822	(45.63) 1.796	<p><b>CREEPAGE AND CLEARANCE</b></p> <p>Selectively loading contacts achieves customer specific creepage and clearance requirements. Contact <a href="mailto:asp@samtec.com">asp@samtec.com</a></p>		
NUMBER OF POSITIONS	A	B	C																							
-02	(22.63) .891	(16.28) .641	(15.63) .615																							
-04	(32.63) 1.285	(26.28) 1.035	(25.63) 1.009																							
-06	(42.63) 1.678	(36.28) 1.428	(35.63) 1.403																							
-08	(52.63) 2.072	(46.28) 1.822	(45.63) 1.796																							
<p><b>-SD OPTION</b> (6 POSITIONS SHOWN)</p>		<p><b>ALSO AVAILABLE</b> (MOQ Required)</p> <ul style="list-style-type: none"> <li>• Other sizes</li> </ul>		<p><b>-LC OPTION</b> (2 POSITIONS SHOWN)</p>																						

<b>FMPT</b>	<b>NO. OF POSITIONS</b>	<b>01</b>	<b>PLATING OPTION</b>	<b>S</b>	<b>V</b>	<b>OPTION</b>															
<b>02, 04, 06, 08</b> (Standard sizes)		<p><b>-L</b> = 10 μ" (0.25 μm) Gold on contact, Matte Tin on tail</p> <p><b>-T</b> = Matte Tin</p>		<p><b>-LC</b> = Locking Clip (Manual placement required)</p>																	
		<table border="1"> <thead> <tr> <th>NUMBER OF POSITIONS</th> <th>A</th> <th>B</th> </tr> </thead> <tbody> <tr> <td>-02</td> <td>(22.63) .891</td> <td>(16.53) .651</td> </tr> <tr> <td>-04</td> <td>(32.63) 1.285</td> <td>(26.53) 1.044</td> </tr> <tr> <td>-06</td> <td>(42.63) 1.678</td> <td>(36.53) 1.438</td> </tr> <tr> <td>-08</td> <td>(52.63) 2.072</td> <td>(46.53) 1.832</td> </tr> </tbody> </table>		NUMBER OF POSITIONS	A	B	-02	(22.63) .891	(16.53) .651	-04	(32.63) 1.285	(26.53) 1.044	-06	(42.63) 1.678	(36.53) 1.438	-08	(52.63) 2.072	(46.53) 1.832			
NUMBER OF POSITIONS	A	B																			
-02	(22.63) .891	(16.53) .651																			
-04	(32.63) 1.285	(26.53) 1.044																			
-06	(42.63) 1.678	(36.53) 1.438																			
-08	(52.63) 2.072	(46.53) 1.832																			

Due to technical progress, all designs, specifications and components are subject to change without notice.

[WWW.SAMTEC.COM](http://WWW.SAMTEC.COM)

All parts within this catalog are built to Samtec's specifications. Components must be approved by Samtec and identified in a Samtec customer-specific drawing to apply.