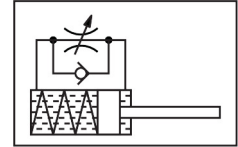


Pneumatic shock absorber YSRW-16-26

Part number: 191197

FESTO



 General operating condition

Data sheet

Feature	Value
Size	16
Stroke	26 mm
Cushioning	Self-adjusting Soft characteristic curve
Mounting position	Any
Position sensing	None
Symbol	00991495
Max. impact velocity	3 m/s
Reset time at room temperature	0.3 s
Reset time at min. ambient temperature	1 s
Mode of operation	Pushing Single-acting
Corrosion resistance class (CRC)	2 - Moderate corrosion stress
LABS (PWIS) conformity	VDMA24364-B2-L
Ambient temperature	-10 °C ... 80 °C
Cushioning length	26 mm
Max. stop force	2000 N
Max. energy absorption per stroke	35 J
Max. energy absorption per hour	68000 J
Max. residual energy	0.16 J
Resetting force	6 N
Min. insertion force	60 N
Product weight	190 g
Load range	50 kg
Type of mounting	With lock nut
Note on materials	RoHS-compliant
Seals material	NBR
Housing material	Steel, galvanized
Piston rod material	High-alloy steel