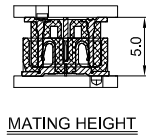
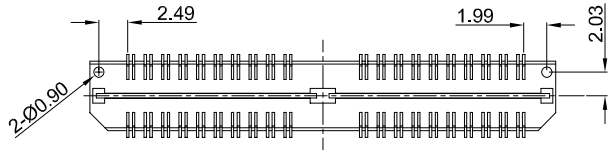


GT-B0507 M S V 42 -XX X XX 01

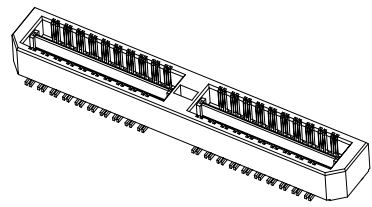
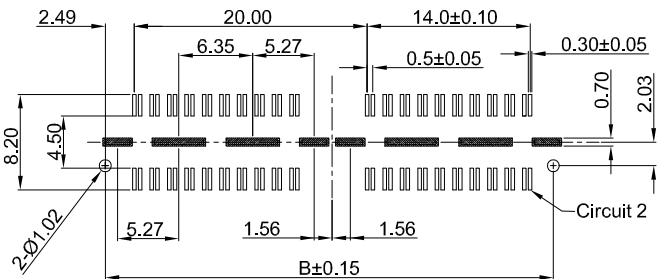
G-Switch
Series No
M-Male
Termpoint
 S-SMT
Angle
 V-180°

Terminal Plating
 04-Au10u"
Housing Colour
 B-Black
Pin Q' PY
 40-200
Height
 42-4.26mm



G-Switch Specification:

- 1.Current rated: 2.0A AC/DC
- 2.Voltage rating: 225V AC/DC
- 3.Withstanding voltage: 675V AC
- 4.Contact resistance: 15mΩ Max.
- 5.Insulation resistance: 5000MΩ min
- 6.Durability cycle: 500 Cycles
- 7.Removal force: 0.01kgf/Pin min
- 8.Operating temperature range: -55°C ~ +125°C



2	CONTACT	PHOSPHOR BRONZE	Au10u" ON CONTACT AREA
1	HOUSING	LCP,94V-0	BLACK
NO.	PART NAME	MATERIAL	REMARK

RECOMMENDED PCB LAYOUT
 TOLERANCE:±0.05

Ordering Information:

Circuit	Dimensions(mm)			Circuit	Dimensions(mm)		
	A	B	C		A	B	C
40	20.00	18.48	0.10	160	80.00	78.48	0.15
80	40.00	38.48	0.10	200	100.00	98.48	0.15
120	60.00	58.48	0.15	--	--	--	--



SCALE: 1:1 UNIT: mm
 SIZE: A4
 Unless otherwise General Tolerance:
 X ±0.40
 X.x ±0.30
 X.xx ±0.20
 X° ±5°
 X.x° ±3°

Title: BTB 0.50mm Pitch 180° Dual Rows SMT Type Mate Connector
 Molde Code: GT-B0507MSV42XXXXX01
 DRAWN: Hu CHECKED: Hu APPROVED: Chen DATE: 2022.12.28



REV: A0 SHEET: 1/1