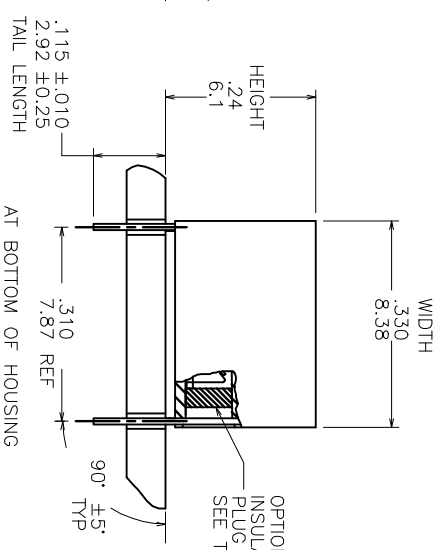
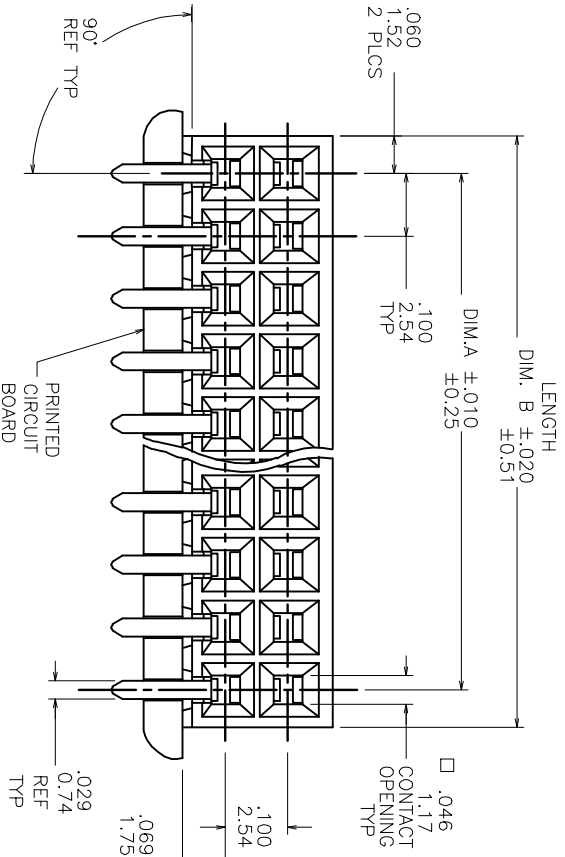
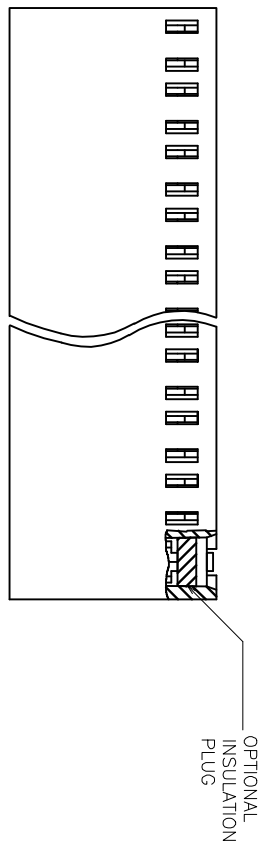


PRODUCT NO.  
SEE TABLE



lfr	ECN no	date	surface	tolerance	projection	product family
K	V70746	FEK 4/24/97	ISO 902	ISO 406	ISO 1101	CARD CONN.
L	V70994	JM 10/19/97	ISO 902	ISO 406	ISO 1101	CARD CONN.
M	V02523	AZ 10/29/00	ISO 902	ISO 406	ISO 1101	CARD CONN.
N	M05-0245	MHT 11/23/08	ISO 902	ISO 406	ISO 1101	CARD CONN.
P	M07-0137	MHT 2/26/07	ISO 902	ISO 406	ISO 1101	CARD CONN.
R	M08-0233	MHT 8/14/08	ISO 902	ISO 406	ISO 1101	CARD CONN.
S	M09-0093	MHT 6/22/09	ISO 902	ISO 406	ISO 1101	CARD CONN.

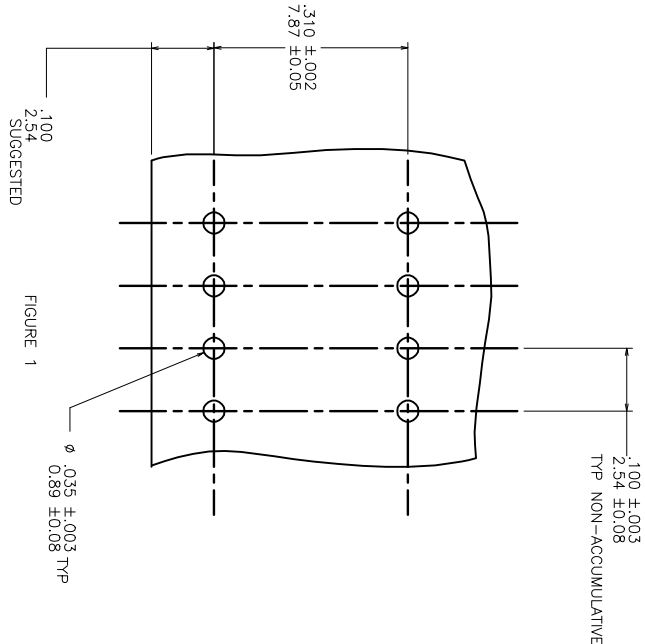
  

mat'l code	index	1	2	3	4	5	6	7
Steel	Sheet	S	S	S	S	S	S	S

lfr	ECN no	date	surface	tolerance	projection	product family
K	V70746	FEK 4/24/97	ISO 902	ISO 406	ISO 1101	CARD CONN.
L	V70994	JM 10/19/97	ISO 902	ISO 406	ISO 1101	CARD CONN.
M	V02523	AZ 10/29/00	ISO 902	ISO 406	ISO 1101	CARD CONN.
N	M05-0245	MHT 11/23/08	ISO 902	ISO 406	ISO 1101	CARD CONN.
P	M07-0137	MHT 2/26/07	ISO 902	ISO 406	ISO 1101	CARD CONN.
R	M08-0233	MHT 8/14/08	ISO 902	ISO 406	ISO 1101	CARD CONN.
S	M09-0093	MHT 6/22/09	ISO 902	ISO 406	ISO 1101	CARD CONN.

PRODUCT NO.  
SEE TABLE



- NOTES:
- HOUSING MATERIAL FILLED HIGH TEMPERATURE NYLON. PER UL 94V-0 COLOR: BLACK
  - TERMINAL MATERIAL: BODY: BRASS .010/0.25 THICK. SPRING: BE-CU. HEAT TREATED BODY PLATING: 30 MICRONS/0.76 MICRON GOLD OR GXT OVER 50 MICRONS NICKEL/1.27 MICRON IN CONTACT AREA. SOLDER TAIL: 100u" PURE TIN (NOTE 9) OVER .050u" NICKEL. SPRING PLATING: GOLD FLASH
  - MARK "FCI" PART NUMBER AND DATE CODE LEGIBLE ON TUBE LABEL.
  - APPLICATION INFORMATION: A. RECOMMENDED MOUNTING HOLE PATTERN IS SHOWN IN FIG. 1 B. ALL MATING PINS TO BE .025/0.64 SQUARE ON TRUE CENTER OF GIVEN TERMINAL SPACINGS WITHIN .015/0.38 DIA. C. SUGGESTED MATING PIN LENGTH: .350±.020/8.89±0.51.
  - SOLDER TAIL TO HAVE GOLD FLASH OVER .050u" NICKEL.
  - ADD "L" SUFFIX AT THE END OF PART NUMBER FOR LEAD FREE OPTION.
  - THIS PRODUCT MEETS EUROPEAN UNION DIRECTIVES AND OTHER COUNTRY REGULATIONS AS DESCRIBED IN GS-22-008
  - THIS PART WILL WITHSTAND EXPOSURE TO 260°C PEAK TEMPERATURE FOR 20 SECONDS IN A WAVE SOLDER, INFRA-RED OR VAPOR PHASE SOLDER PROCESS.
  - THIS PRODUCT HAS 100% TIN PLATING IN THE INTERFACE AND HAS NOT BEEN TESTED FOR WISKER GROWTH IN ALL INTERCONNECT REQUIREMENTS
  - PLATING OPTIONS: MAY BE EITHER GOLD OR GXT PLATED AT MANUFACTURER'S OPTION.

mat'l. code	lit	ecn no	dt	date	surface	tolerance	projection	product family
	S				ISO 1902 HERNICKS UNLESS OTHERWISE SPECIFIED	ISO 406 ISO 7001	MIL-DTL-24013 INCH/MM SCALE 4:1	CARD CONN.
					angles	MIL-DTL-24013		
					linear	XXX XXXX/XXXXXX		
					0+/-2	SCALE 4:1		
					dr	J. SHREINER 3/23/90		
					engr	M. HAHN 3/23/90		
					chr	M. HAHN 3/23/90		
					appr	M. HAHN 3/23/90		
sheet	revision							
index	sheet							







FCIconnect.com

Copyright FCI

PRODUCT NUMBER	NO. OF POS.	DIM. A	DIM. B	INSULATION PLUG	LEAD FREE OPTION
66925-501	2X1	.90/.0	.129/3.05	YES	
-502	2X2	.10/2.5	.229/4.59		
-503	2X3	.20/5.0	.329/8.13	YES	NOTE 6,7
-504	2X4	.30/7.6	.429/10.67		
-505	2X5	.40/10.1	.529/13.21		
-506	2X6	.50/12.7	.629/15.75		
-507	2X7	.60/15.2	.729/18.27		
-508	2X8	.70/17.7	.829/20.83		
-509	2X9	.80/20.3	.929/23.37		
-510	2X10	.90/22.8	1.029/25.91		
-511	2X11	1.00/25.4	1.129/28.45		
-512	2X12	1.10/27.9	1.229/30.99		
-513	2X13	1.20/30.4	1.329/33.53		
-514	2X14	1.30/33.0	1.429/36.07		
-515	2X15	1.40/35.5	1.529/38.61		
-516	2X16	1.50/38.1	1.629/41.15		
-517	2X17	1.60/40.6	1.729/43.69		
-518	2X18	1.70/43.1	1.829/46.23		
-519	2X19	1.80/45.7	1.929/48.77		
-520	2X20	1.90/48.2	2.029/51.31		
-521	2X21	2.00/50.8	2.129/53.85		
-522	2X22	2.10/53.3	2.229/56.39		
-523	2X23	2.20/55.8	2.329/58.93		
-524	2X24	2.30/58.4	2.429/61.47		
-525	2X25	2.40/60.9	2.529/64.01		
-526	2X26	2.50/63.5	2.629/66.55		
-527	2X27	2.60/66.0	2.729/69.09		
-528	2X28	2.70/68.5	2.829/71.63		
-529	2X29	2.80/71.1	2.929/74.17		
-530	2X30	2.90/73.6	3.029/76.71		
-531	2X31	3.00/76.2	3.129/79.25		
-532	2X32	3.10/78.7	3.229/81.79		
-533	2X33	3.20/81.2	3.329/84.33		
-534	2X34	3.30/83.8	3.429/86.87		
-535	2X35	3.40/86.3	3.529/89.41		
-536	2X36	3.50/88.9	3.629/91.95		
-537	2X37	3.60/91.4	3.729/94.49		
-538	2X38	3.70/93.9	3.829/97.03		
-539	2X39	3.80/96.5	3.929/99.57		
66925-540	2X40	3.90/99.0	4.029/102.11	YES	NOTE 6,7

UNASSIGNED  
UNASSIGNED  
OBSOLETE  
OBSOLETE

mat'l. code	—	surface	ISO 1902	tolerance	ISO 1406 ISO 406 ISO 1701	projection	INCH/MM	product family	CARD CONN.
lit	ECT no	date	ISO 1902	tolerance	ISO 1406 ISO 406 ISO 1701	projection	INCH/MM	title	HORIZ. CARD CONN.
S			gigles	linear	XXX 1000/100008	scale	4:1	dwg no	66925
			dr	J. SHREINER	3/23/90			sheet	5 of 7
			eng	M. HAHN	3/23/90			Size	A3
			chr	M. HAHN	3/23/90			Product Customer Drawing	
			appd	M. HAHN	3/23/90				
Steel	revision								
index	sheet								



