

## Common mode Noise Filter Array

Type: **EXC28CE**



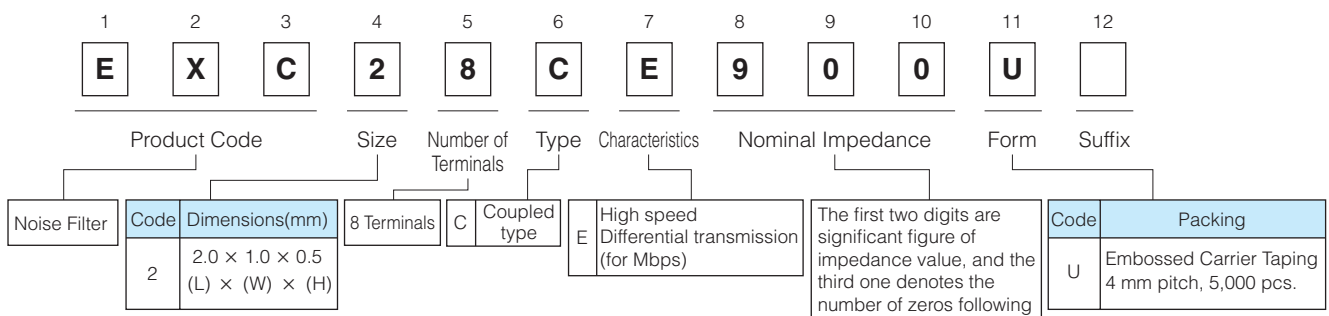
### Features

- Small and thin type, two built-in filter circuit (L 2.0 mm×W 1.0 mm×H 0.5 mm)
- Elimination of radiation noises from high-speed differential transmissions
- Magnetic shield type with no leakage
- Strong multilayer/sintered structure, excellent reflow resistance and high mounting reliability
- Lead, halogen and antimony-free
- RoHS compliant

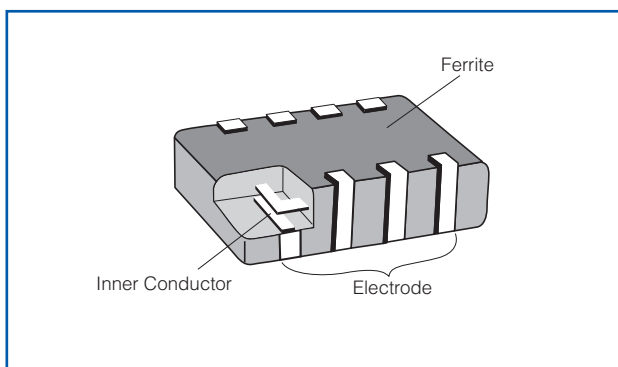
### Recommended Applications

- AV equipment (LCD-TV, DVD/Blu-ray drives), Information equipment (PCs, HDD, Printers), Communications equipment (Mobile phones, Smartphones)
- Noise suppression of high-speed differential data lines such as USB2.0 and LVDS

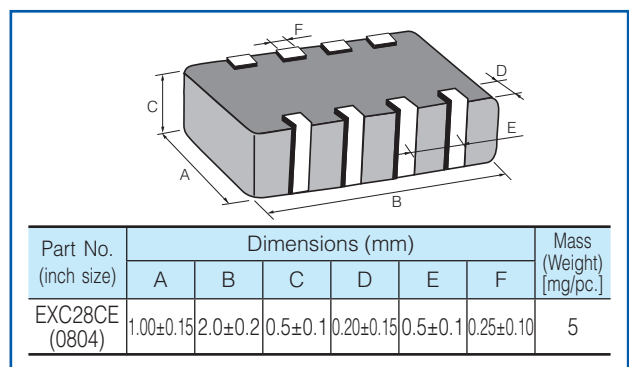
### Explanation of Part Numbers



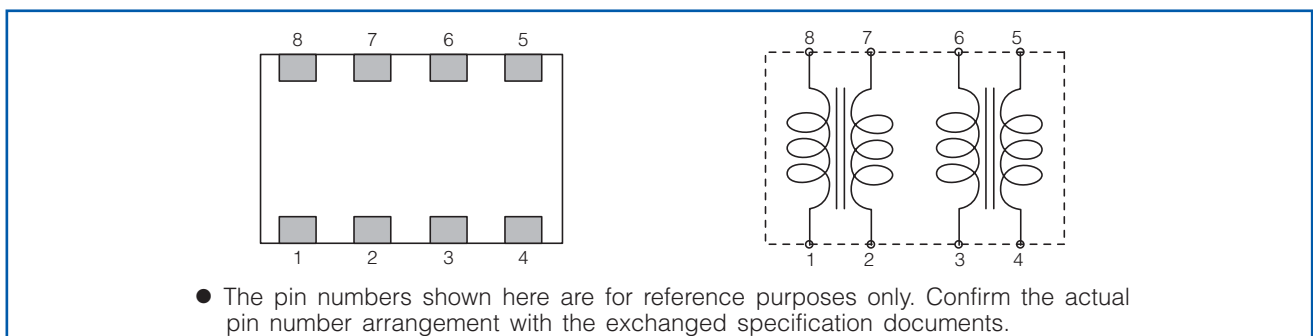
### Construction



### Dimensions in mm (not to scale)



### Circuit Configuration (No Polarity)



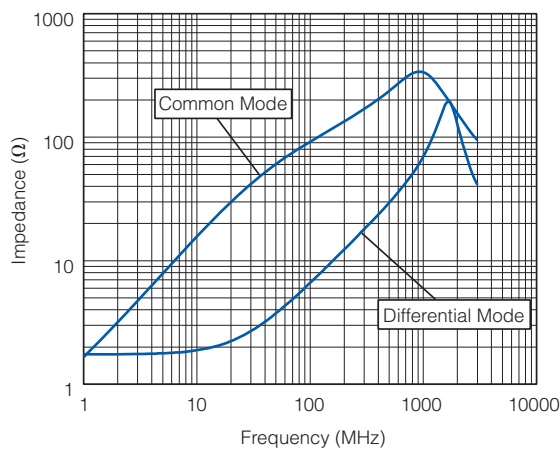
## Ratings

| Part Number | Impedance ( $\Omega$ ) at 100 MHz |                   | Rated Voltage (V DC) | Rated Current (mA DC) | DC Resistance ( $\Omega$ ) max. |
|-------------|-----------------------------------|-------------------|----------------------|-----------------------|---------------------------------|
|             | Common Mode                       | Differential Mode |                      |                       |                                 |
| EXC28CE900U | 90 $\Omega$ ±25 %                 | 15 $\Omega$ max.  | 5                    | 160                   | 1.5                             |
| EXC28CE121U | 120 $\Omega$ ±25 %                | 18 $\Omega$ max.  | 5                    | 140                   | 2.0                             |
| EXC28CE201U | 200 $\Omega$ ±25 %                | 20 $\Omega$ max.  | 5                    | 130                   | 2.5                             |
| EXC28CE301U | 300 $\Omega$ ±25 %                | 30 $\Omega$ max.  | 5                    | 80                    | 5.0                             |

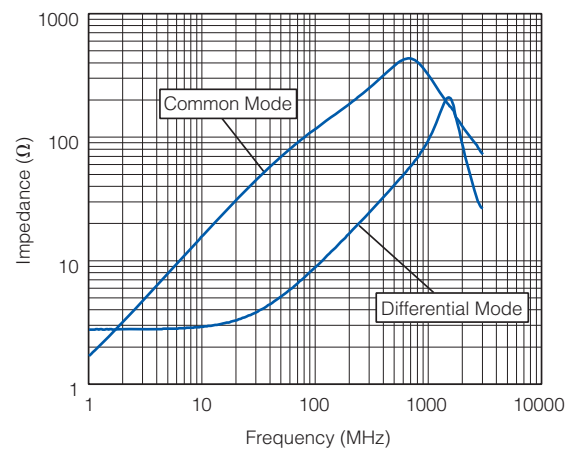
- Category Temperature Range  $-40\text{ }^{\circ}\text{C}$  to  $+85\text{ }^{\circ}\text{C}$

## Impedance Characteristics (Typical)

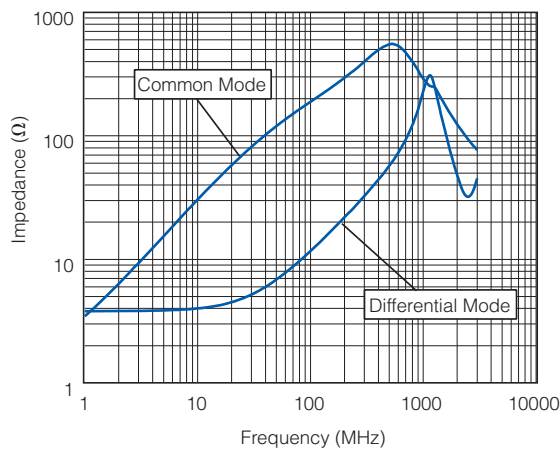
### ● EXC28CE900U



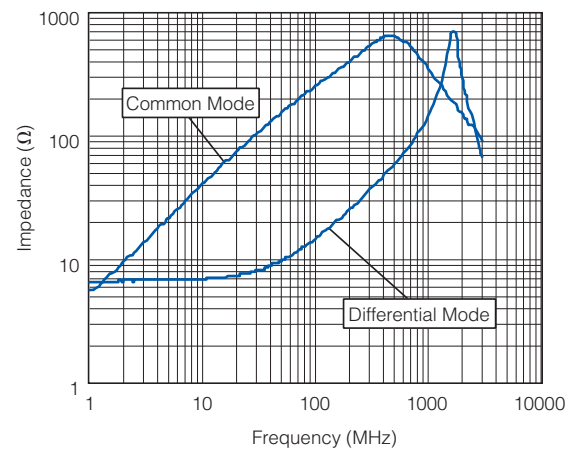
### ● EXC28CE121U



### ● EXC28CE201U

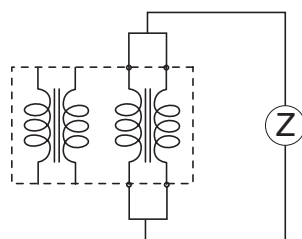


### ● EXC28CE301U

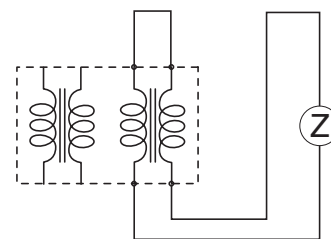


### ● Measurement Circuit

(A) Common Mode



(B) Differential Mode



■ **As for Packaging Methods, Land Pattern, Soldering Conditions and Safety Precautions,** Please see Data Files