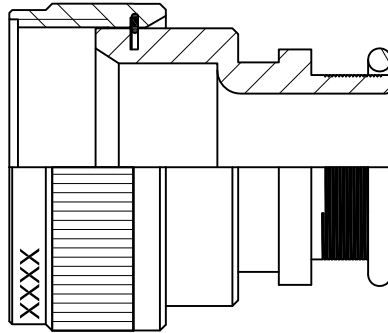


REVISIONS			
LTR	DESCRIPTION	DATE	APPROVED
J	REVISED PER ECO-12-021161	04DEC12	G.WELLS
K	REVISED PER ECO-14-002312	13FEB15	H.SMITH



CODE 54
STRAIGHT ADAPTER

NOTES:

1. THIS PRODUCT IS DESIGNED TO TERMINATE A BRAIDED CABLE SHIELD AND A HEAT SHRINKABLE LIPPED BOOT TO A CONNECTOR.
2. SEE CH00-0250-008 FOR ORDERING INFORMATION, MODIFICATIONS AND ADDITIONAL DIMENSIONS.
3. SEE DRAWING "TR" FOR DETAIL ON TINEL-LOCK RING. RINGS ARE DESIGNED TO BE HEATED ELECTRICALLY. ALL RINGS ARE MARKED WITH THERMOCHROMIC PAINT WHICH CHANGES COLOR WHEN INSTALLATION TEMPERATURE IS REACHED.
4. ADAPTER TO BE PERMANENTLY MARKED WITH CODE IDENT. NO. AND PART NO. LESS RING DESIGNATOR (E.G.: 06090-TXR54AB00-1206). RINGS SHALL BEAR NO MARKING.
5. FOR LARGER ENTRY SIZES, A 2 PIECE ADAPTER (TYPE II) IS SUPPLIED.
6. ADAPTER MATES TO MIL-C-81703, SERIES III, MS3424, MS3446, MS3464, MS3467, MS3468, CLASS E & L.
7. ADAPTER MATES TO MIL-C-5015G, MS3400 SERIES, CLASS D, E, K, L, U & W: MS3400, MS3401, MS3404, MS3406, MS3450, MS3451, MS3454, MS3456, MS3470, MS3471, MS3472, MS3474, MS3475, MS3476. MIL-C-83723, SERIES II, CLASS A & L. MIL-C-83723, SERIES I & III, CLASS A, G, K, R & S: M83723/1, /2, /3, /4, /5, /6, /7, /8, /13, /14, /36, /37, /38, /39, /40, /41, /42, /43, /48, /49, /65, /66, /67, /68, /69, /70, /71, /72, /73, /74, /75, /76, /77, /78, /82, /83, /84, /85, /86, /87, /91, /92, /95, /97, /98, (MS3155 CONTROLLED INTERFACE).
8. THESE DIMENSIONS APPLY IF A SELF-LOCKING COUPLING NUT IS USED. (MOD. CODE "S")
9. THESE DIMENSIONS APPLY IF AN ADAPTER MATERIAL IS STAINLESS STEEL.

© 2015 TYCO ELECTRONICS. ALL RIGHTS RESERVED

Raychem Adapters
CUSTOMER DRAWING

UNLESS OTHERWISE SPECIFIED
DIMENSIONS ARE IN INCHES.
METRIC DIMENSIONS ARE
IN BRACKETS.

DECIMALS
.XXX ± 0.005 [0.13 mm]
.XX ± 0.01 [0.25 mm]
.X ± 0.1 [0.50 mm]

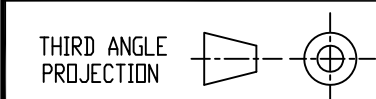
ANGLES
.X ± 1 DEG.

DRAWN R. RAMIREZ	DATE 03-18-93
CHECKED	DATE
APPROVED	DATE
REVISED N. NAGAR	DATE 13-02-15
CAD NAME txr54_1_k_cd	



TE Connectivity

TITLE
TINEL-LOCK™ ADAPTER

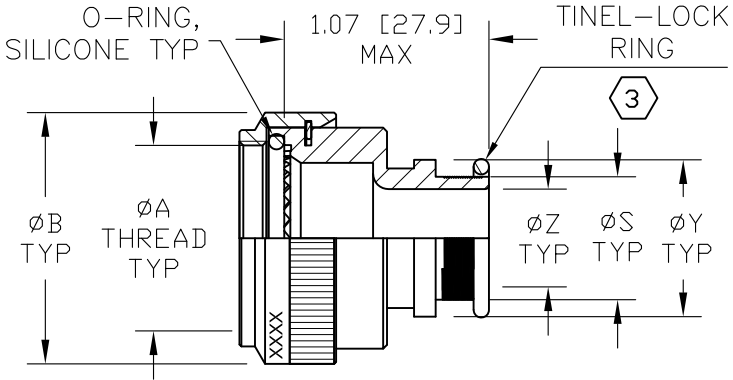


SIZE A	CODE IDENT. NO. 06090	DWG. NO. TXR54
-----------	--------------------------	-------------------

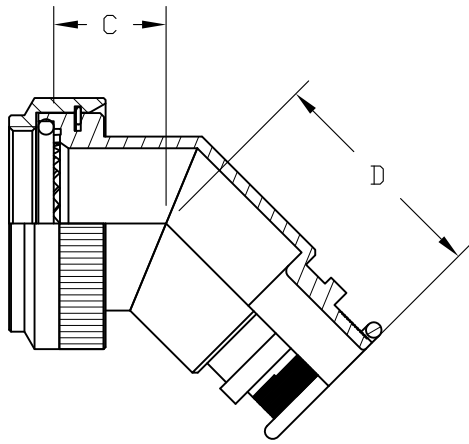
DO NOT SCALE THIS DWG SHEET 1 OF 3

SEE SHEET 1 FOR REVISION

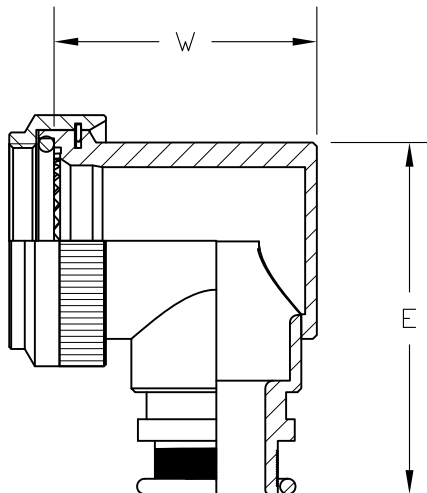
IF MAX ENTRY IS EXCEEDED ADAPTER WILL BE SUPPLIED AS TYPE 2



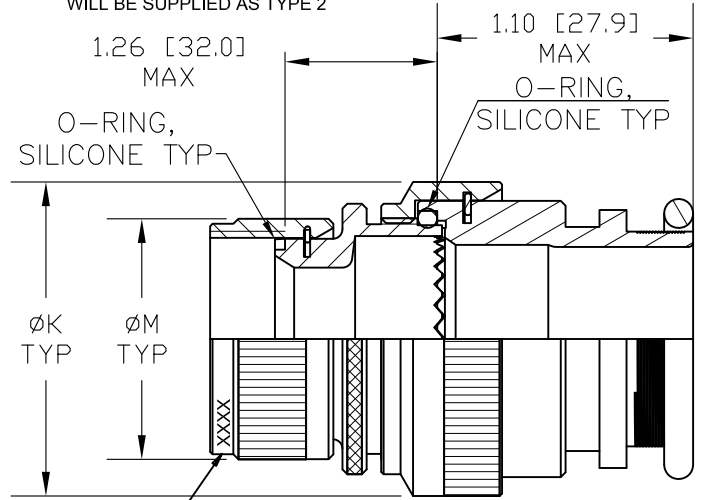
STRAIGHT ADAPTER-TYPE I



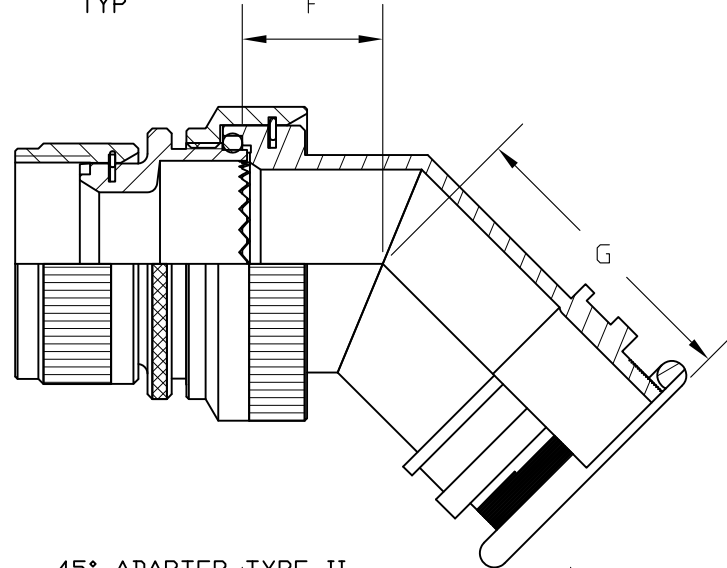
45° ADAPTER-TYPE I



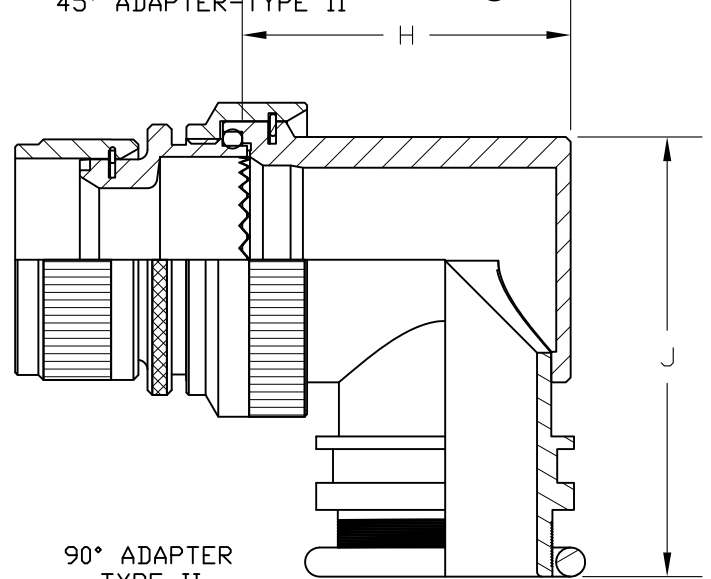
90° ADAPTER TYPE I



STRAIGHT ADAPTER-TYPE II




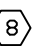

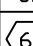
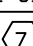
45° ADAPTER-TYPE II

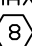
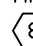


90° ADAPTER TYPE II

Raychem Adapters
CUSTOMER DRAWING

SIZE	CODE IDENT. NO.	DWG. NO.	REV
A	06090	TXR54	K
DO NOT SCALE THIS DWG		CAD NAME	SHEET 2 OF 3
		txr54_2_k_cd	

ORDER NO.	SHELL SIZE		MAX ENTRY SIZE TYPE I 	A THREAD CLASS 2B	B DIA MAX	B DIA MAX 	C MAX	D MAX	E MAX	M DIA MAX	W MAX	W MAX 
												
03	3		04	.562-24 UNEF	.669 [17.00]	.940 [23.88]	.75 [19.1]	1.083 [27.5]	1.13 [28.7]	.695 [17.65]	1.06 [26.9]	1.05 [26.8]
08		8 & 8S	04	.500-20 UNF	.617 [15.67]	.890 [22.61]	.75 [19.1]	1.075 [27.3]	1.10 [27.9]	.630 [16.00]	.98 [25.0]	.90 [22.9]
10		10, 10S & 10SL	06	.625-24 UNEF	.734 [18.64]	1.010 [25.65]	.77 [19.6]	1.102 [28.0]	1.16 [29.5]	.757 [19.23]	1.06 [27.0]	1.00 [25.5]
12	7	12 & 12S	08	.750-20 UNEF	.858 [21.79]	1.140 [28.96]	.80 [20.3]	1.122 [28.5]	1.22 [31.0]	.882 [22.40]	1.16 [29.5]	1.13 [28.8]
14	12	14 & 14S	08	.875-20 UNEF	.984 [24.99]	1.260 [32.00]	.82 [20.8]	1.161 [29.5]	1.28 [32.5]	1.007 [25.58]	1.22 [31.0]	1.21 [30.9]
16	19	16 & 16S	10	1.000-20 UNEF	1.112 [28.24]	1.390 [35.31]	.84 [21.3]	1.190 [30.2]	1.35 [34.3]	1.132 [28.75]	1.36 [34.5]	1.34 [34.0]
18	27	18	12	1.062-18 UNEF	1.218 [30.94]	1.510 [38.35]	.86 [21.8]	1.220 [31.0]	1.40 [35.6]	1.218 [30.94]	1.48 [37.5]	1.41 [36.0]
20	37	20	14	1.188-18 UNEF	1.345 [34.16]	1.640 [41.66]	.88 [22.4]	1.236 [31.4]	1.46 [37.1]	1.345 [34.16]	1.67 [42.5]	1.54 [39.3]
22		22	16	1.312-18 UNEF	1.468 [37.30]	1.760 [44.70]	.91 [23.1]	1.244 [31.6]	1.53 [38.9]	1.468 [37.30]	1.75 [44.5]	1.67 [42.4]
24		24	18	1.438-18 UNEF	1.593 [40.46]	1.890 [48.00]	.93 [23.6]	1.283 [32.6]	1.59 [40.4]	1.593 [40.46]	1.80 [45.5]	1.78 [45.3]
28		28	22	1.750-18 UNS	1.969 [50.01]	2.140 [54.36]	.98 [24.9]	1.300 [33.0]	1.78 [45.2]	1.969 [50.01]	2.15 [54.7]	2.01 [51.2]
32		32	24	2.000-18 UNS	2.219 [56.36]	2.400 [60.96]	1.03 [26.2]	1.19 [30.2]	1.90 [48.3]	2.219 [56.36]	2.41 [61.4]	2.38 [60.5]
36		36	24	2.250-16 UN	2.469 [62.71]	2.640 [67.06]	1.08 [27.4]	1.23 [31.2]	2.03 [51.6]	2.469 [62.71]	2.67 [67.7]	2.60 [66.0]
40		40	24	2.500-16 UN	2.719 [69.06]	2.890 [73.41]	1.15 [29.1]	1.28 [32.5]	2.15 [54.6]	-- [---]	2.90 [73.7]	2.85 [72.5]
44		44	24	2.750-16 UN	2.969 [75.41]	3.140 [79.76]	1.20 [30.6]	1.355 [34.2]	2.28 [57.9]	-- [---]	3.15 [80.0]	2.99 [76.0]
48		48	24	3.000-16 UN	3.219 [81.76]	3.390 [86.11]	1.25 [31.8]	1.394 [35.4]	2.40 [61.0]	-- [---]	3.40 [86.3]	3.16 [80.3]
61	61		18	1.500-18 UNEF	1.653 [42.00]	1.880 [47.75]	.94 [23.9]	1.09 [27.7]	1.62 [41.1]	1.653 [42.00]	1.90 [48.3]	1.92 [48.8]

ENTRY SIZE	Z +.010 -.020	S DIA	Y ±.015 [±0.38]	F MAX	G MAX	H MAX	H MAX 	J MAX	K MAX	K MAX 
04	.250 [6.35]	.376 [9.56] .370 [9.39]	.550 [13.97]	N/A	N/A	N/A	N/A	N/A	N/A	N/A
05	.312 [7.92]	.438 [11.13] .432 [10.97]	.612 [15.54]	.77 [19.6]	1.10 [28.0]	1.19 [30.2]	1.19 [30.2]	1.16 [29.5]	.83 [21.0]	.97 [24.6]
06	.375 [9.53]	.501 [12.73] .495 [12.57]	.675 [17.14]	.77 [19.6]	1.10 [28.0]	1.19 [30.2]	1.19 [30.2]	1.16 [29.5]	.83 [21.0]	.97 [24.6]
07	.437 [11.09]	.563 [14.31] .556 [14.12]	.737 [18.71]	.80 [20.3]	1.10 [28.0]	1.38 [35.1]	1.38 [35.1]	1.22 [31.0]	.92 [23.4]	.97 [24.6]
08	.500 [12.70]	.626 [15.91] .619 [15.72]	.800 [20.32]	.80 [20.3]	1.12 [28.5]	1.38 [35.1]	1.38 [35.1]	1.22 [31.0]	.96 [24.5]	1.11 [28.3]
10	.625 [15.87]	.752 [19.11] .742 [18.84]	.925 [23.49]	.84 [21.3]	1.16 [29.5]	1.51 [38.4]	1.51 [38.4]	1.35 [34.3]	1.18 [30.0]	1.28 [32.4]
12	.750 [19.05]	.877 [22.28] .867 [22.02]	1.050 [26.67]	.88 [22.4]	1.19 [30.2]	1.63 [41.4]	1.63 [41.4]	1.40 [35.6]	1.35 [34.3]	1.40 [35.6]
14	.875 [22.23]	1.002 [25.46] .991 [25.17]	1.175 [29.84]	.88 [22.4]	1.22 [31.0]	1.78 [45.2]	1.78 [45.2]	1.46 [37.1]	1.41 [35.8]	1.51 [38.5]
16	1.000 [25.40]	1.127 [28.63] 1.116 [28.34]	1.300 [33.02]	.93 [23.6]	1.24 [31.4]	1.88 [47.8]	1.88 [47.8]	1.53 [38.9]	1.60 [40.6]	1.64 [41.7]
18	1.125 [28.57]	1.252 [31.81] 1.241 [31.52]	1.425 [36.19]	.93 [23.6]	1.25 [31.6]	2.01 [51.1]	2.01 [51.1]	1.59 [40.4]	1.66 [42.2]	1.73 [43.9]
20	1.250 [31.75]	1.377 [34.98] 1.366 [34.69]	1.550 [39.37]	.98 [24.9]	1.28 [32.6]	2.13 [54.1]	2.13 [54.1]	1.78 [45.2]	2.04 [51.8]	2.04 [51.8]
22	1.375 [34.93]	1.502 [38.15] 1.488 [37.79]	1.675 [42.55]	1.03 [26.2]	1.41 [35.8]	2.29 [58.2]	2.29 [58.2]	1.85 [47.0]	2.23 [56.6]	2.23 [56.6]
24	1.500 [38.10]	1.627 [41.33] 1.613 [40.97]	1.800 [45.72]	1.08 [27.4]	1.52 [38.6]	2.42 [61.5]	2.42 [61.5]	1.92 [48.8]	2.23 [56.6]	2.23 [56.6]
28	1.750 [44.45]	1.873 [47.58] 1.867 [47.42]	2.050 [52.00]	1.08 [27.4]	1.76 [44.9]	2.60 [66.0]	2.40 [60.8]	2.03 [51.6]	2.30 [58.5]	2.40 [61.0]

Raychem Adapters
CUSTOMER DRAWING

SIZE	CODE IDENT. NO.	DWG. NO.	REV
A	06090	TXR54	K
DO NOT SCALE THIS DWG		CAD NAME txr54_3_k_cd	SHEET 3 OF 3