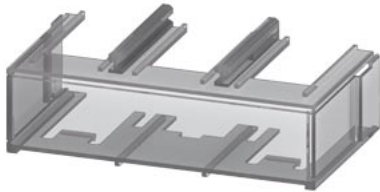




Terminal cover for busbar connections from 3RT1 or 3RB2 Size S10 and S12





product brand name	SIRIUS
product designation	Covers for screw terminals
design of the product	Can be used for 3UF71.4-1BA00-0
Substance Prohibitance (Date)	01.07.2006 00:00:00

Certificates/ approvals

General Product Approval	EMC	Declaration of Conformity
  		Miscellaneous 

Marine / Shipping **other**

    	Confirmation
---	------------------------------

other **Railway**

Miscellaneous	Type Test Certificates/Test Report
-------------------------------	--

Further information

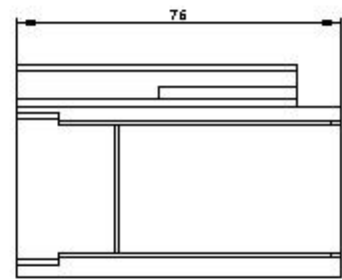
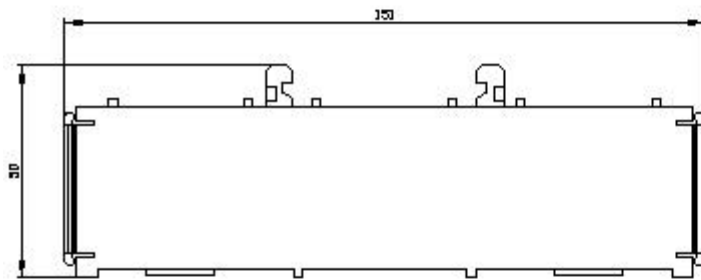
- Information- and Downloadcenter (Catalogs, Brochures,...)
<https://www.siemens.com/ic10>
- Industry Mall (Online ordering system)
<https://mall.industry.siemens.com/mall/en/en/Catalog/product?mlfb=3RT1966-4EA3>
- Cax online generator
<http://support.automation.siemens.com/WW/CAXorder/default.aspx?lang=en&mlfb=3RT1966-4EA3>
- Service&Support (Manuals, Certificates, Characteristics, FAQs,...)
<https://support.industry.siemens.com/cs/ww/en/ps/3RT1966-4EA3>
- Image database (product images, 2D dimension drawings, 3D models, device circuit diagrams, EPLAN macros, ...)
http://www.automation.siemens.com/bilddb/cax_de.aspx?mlfb=3RT1966-4EA3&lang=en

Characteristic: Tripping characteristics, I²t, Let-through current

<https://support.industry.siemens.com/cs/ww/en/ps/3RT1966-4EA3/char>

Further characteristics (e.g. electrical endurance, switching frequency)

<http://www.automation.siemens.com/bilddb/index.aspx?view=Search&mlfb=3RT1966-4EA3&objecttype=14&gridview=view1>



last modified:

12/23/2020 