

Pitch:1.00x1.00mm(0.039 " x0.039 " )  
 Dual Rows Pin Header Straight Dip Type

**ELETE**  
 Professional Connecting Solution  
 HMGDSHXX Series

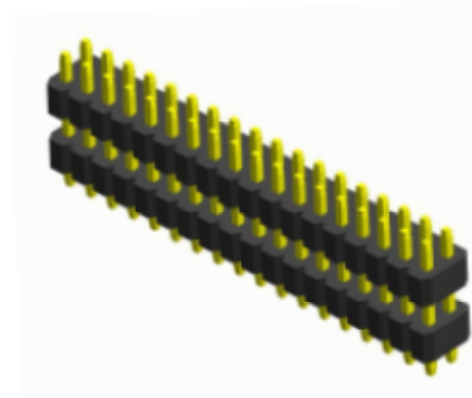
**Specifications**

Current Rating:1.0 Ampere  
 Insulation Resistance:1000MΩ Min  
 Dielectric Withstanding:300V AC  
 Contact Resistance:20mΩ Max  
 Operating Temperature:-40℃ to +105℃

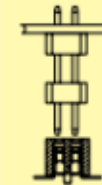
**Materials**

Contact Material: Brass  
 Insulation Material: Polyester,UL 94V-0  
 LCP/NL6T

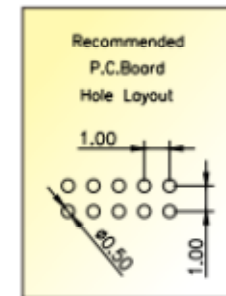
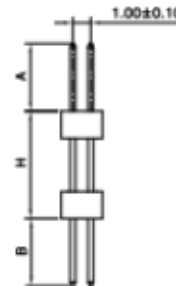
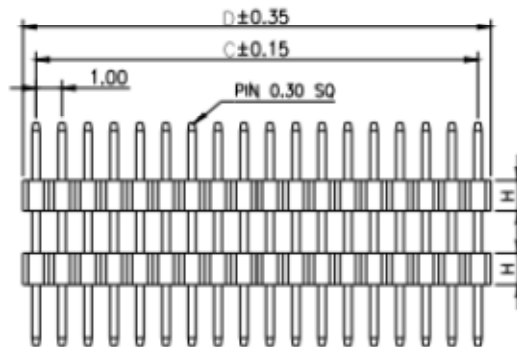
All material RoHS&Reach Compliant  
 Halogen-free is available



Mating with



HFGDM20



No. of Pins/Row	Dimension Information		No. of Pins/Row	Dimension Information		No. of Pins/Row	Dimension Information		No. of Pins/Row	Dimension Information	
	C	D		C	D		C	D		C	D
02	1.00	2.00	12	11.00	12.00	22	21.00	22.00	32	31.00	32.00
03	2.00	3.00	13	12.00	13.00	23	22.00	23.00	33	32.00	33.00
04	3.00	4.00	14	13.00	14.00	24	23.00	24.00	34	33.00	34.00
05	4.00	5.00	15	14.00	15.00	25	24.00	25.00	35	34.00	35.00
06	5.00	6.00	16	15.00	16.00	26	25.00	26.00	36	35.00	36.00
07	6.00	7.00	17	16.00	17.00	27	26.00	27.00	37	36.00	37.00
08	7.00	8.00	18	17.00	18.00	28	27.00	28.00	38	37.00	38.00
09	8.00	9.00	19	18.00	19.00	29	28.00	29.00	39	38.00	39.00
10	9.00	10.00	20	19.00	20.00	30	29.00	30.00	40	39.00	40.00
11	10.00	11.00	21	20.00	21.00	31	30.00	31.00			