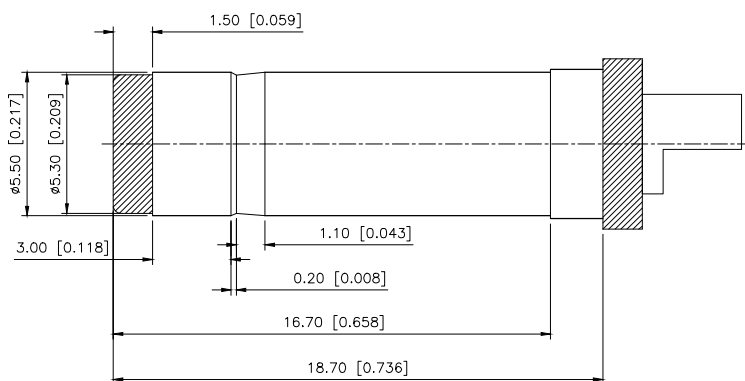
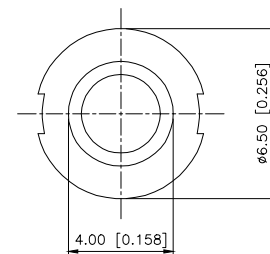
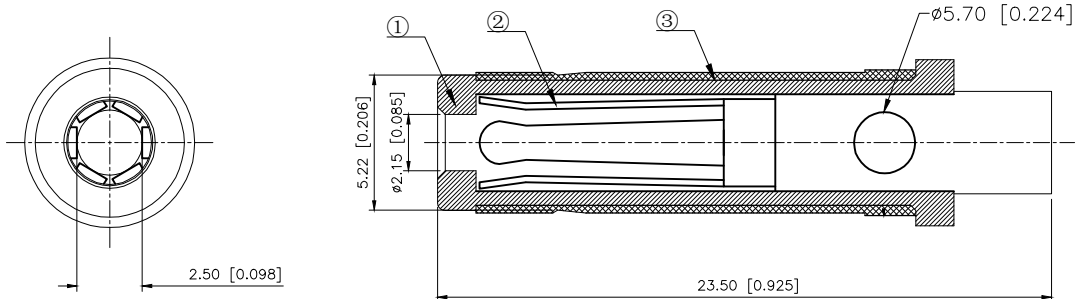


REVISIONS					
REV.	ECN NO.	LOCATION	DESCRIPTION	DATE	DESIGN
A0	N/A		INITIAL RELEASE	/	/
A1	N/A		图面升级整理图面	2025.07.01	阿树



SPECIFICATIONS:

- 1.ELECTRICAL CHARACTERISTICS:1-1.RATING:DC24V 6A
1-2.CONTACT RESISTANCE:30m2MAX.(INITIAL)
1-3.DIELECTRIC WITHSTANDING VOLTAGE:500V AC FOR ONE MINUTE
1-4.INSULATION RESISTANCE:100MQ MIN. MEASURED BY 500V DC
- 2.MECHANICAL CHARACTERISTICS:
2-1.Plug it into the mother socket 3 times INSERTION
FORCE:03~3.0 KGF
2-2. Plug it into the mother socket 5000 times INSERTION
FORCE:03~3.0 KG
- 3.SALT FOG:24 Hours
- 4.FOR REFLOW SOLDERING LEAD-FREE PROCESS
5. * REPRESENT CRITICAL DIMENSIONS.

Terminal	Phosphor Bronze	Ni
Fork hook tube	C3604	Ni
Plastic	PBT	Black
PAPT NAMF	MATERIAL	PLATING

AuGLAR	±5°
X.	±0.40
X.x	±0.30
X.xx	±0.20
X.xxx	±0.15
UNSPECIFIED TOLERANCES	



DESIGN	阿树	VIEW:	MODEL TYPE: DC PIUG
CHECKED		UNIT: mm/in	PART NO.: DT-2355525
APPROVED		SIZE: A4	DWG NO.: