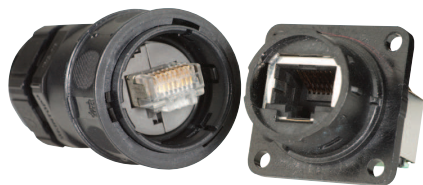


RJF 544

Ethernet connection system for harsh environment – Industrial Ethernet



RJF544 allows you to use an Ethernet Class D / Cat 5e connection for 10 BaseT, 100 Base TX or 1000 BaseT networks in harsh environments.
 With the patented **RJStop®** system you can use a standard RJ45 cordset in a protective **composite** plug which will protect it from shocks, dust and fluids.
No hazardous on-field cabling and grounding !

- Applications**
- Telecom equipment
 - Video control
 - Robotics
 - Industrial process control
 - CNC machines
 - Special machines
 - Motion control
 - Tele-maintenance

- Main characteristics**
- Compliant with IEC 60603-7 variante 12
 - Shock, vibration and traction resistant
 - No cabling operation in field and no tools required
 - Sealed against fluids and dust (IP68)
 - **Quick push pull coupling**
 - RJ45 cordset retention in the plug: 100 N in the axis
 - Mating cycles: 500 min
 - Improved EMI Protection
 - Compatible with cable diameter from 6 mm [0.236 in] to 13 mm [0.512 in]



Now available with transversal sealing*
 *Seald in unmated condition

- Environmental Protection**
- Sealing: IP68
 - Salt spray > 1000 h
 - Fire retardant / Low smoke: UL94 V0 and NFF 16102, DIN 5510-2
 - Vibrations: 10 – 500 Hz, 10 g, 3 axes: no discontinuity > 10 nano s.
 - Thermal shock: 5 cycles at - 40°C / +100°C
 - Operating temperature: - 40°C / +85°C

Data Transmission
 10 BaseT, 100 BaseTX and 1000 BaseT networks
 Cat 5e per TIA/EIA 568B and ClassD per ISO/IEC 11801

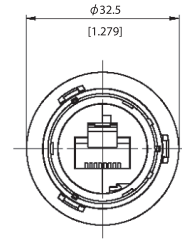
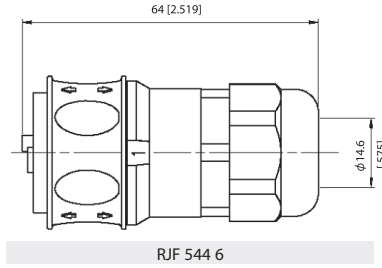
Part number code

| | RJF 544 | 2 | 2 | 03 100BTX |
|--|---------|---|---|-----------|
| Shell type | | | | |
| 6: composite push pull plug, plastic gland | | | | |
| 2: composite square flange receptacle | | | | |
| 2S: composite square flange receptacle transversally sealed | | | | |
| 2M: metallized (Ni) composite square flange receptacle | | | | |
| 2SM: metallized (Ni) composite square flange receptacle transversally sealed | | | | |
| Back terminations (for receptacles only) | | | | |
| 1: female RJ45 | | | | |
| 1RA: right angle female RJ45 | | | | |
| 2: RJ45 cordset | | | | |
| Cordset length (for receptacles with "2" back termination only) - Other lengths are available on demand | | | | |
| 03 100BTX: 0.3 meters [11.81 inches] | | | | |
| 05 100BTX: 0.5 meters [19.68 inches] | | | | |
| 10 100BTX: 1 meter [39.37 inches] | | | | |
| 15 100BTX: 1.5 meters [59.05 inches] | | | | |
| 00: 8 tinned holes at the rear of the PCB to solder the cable | | | | |
| Remark: cabling configuration → 100 BTX = 568B (Ethernet specification) | | | | |

- Examples:**
- Plug: RJF 544 6
 - Square flange receptacle, female RJ45 back termination: RJF 544 21
 - Metallized square flange receptacle, female RJ45 back termination: RJF 544 2M 1
 - Square flange receptacle, 1,5m [59.05"] 100 BTX cordset termination: RJF 544 22 15 100BTX
 - Square flange receptacle, solder termination: RJF 544 22 00
 - Transversally sealed receptacle female RJ45 back termination: RJF544 2S1

Plug

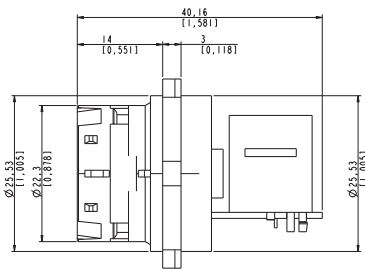
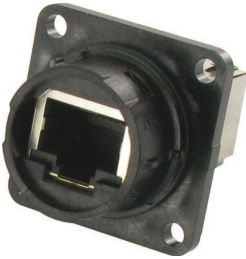
- Type 6 shell with plastic gland



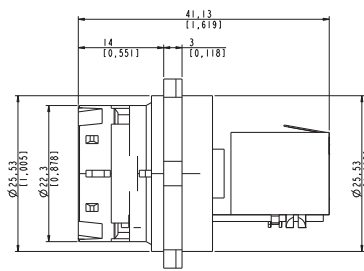
RJF 544 6

Receptacle

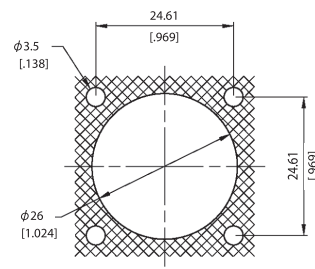
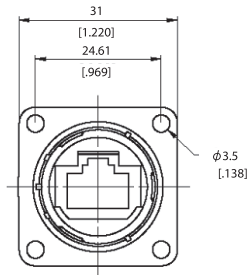
- Type 2S/2M/2SM shell: square flange receptacle with 4 mounting holes



RJF 544 2x 1 RA

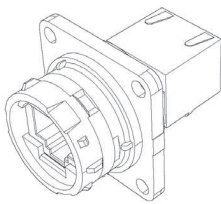


RJF 544 2x 1

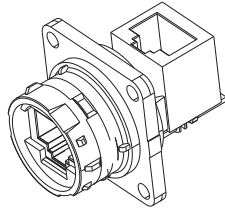


Panel Drilling
(same as #16 MIL-C-5015)

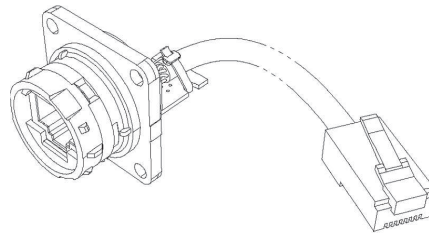
Back terminations



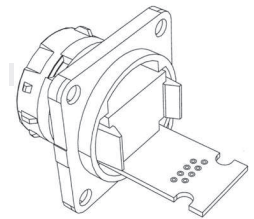
Type1: female RJ45



Type1RA: right angle female RJ45



Type2: RJ45 cordset



Type 2 - 00: solder - 8 tinned holes

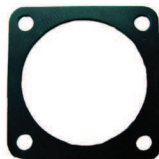
Notes: type 2 without RJ45 plug at the end of the cable is also available: consult factory

Accessories

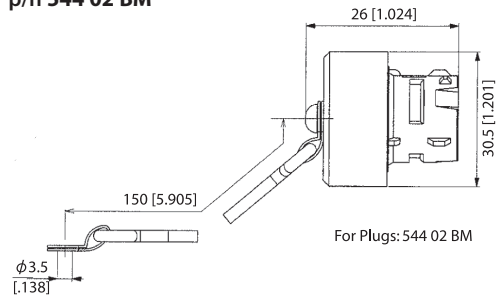
- Rubber IP68 receptacle cap
p/n RJF 544BESC



- Panel gasket
p/n RJF 544 02JE



- IP68 caps for plug
p/n 544 02 BM



For Plugs: 544 02 BM

- Panel gasket (thickness: 0.6mm [0.039]): p/n RJF 544 02 JE
- Plug Insert removal tool: p/n 5440 OT 02