



LED Display Product Data Sheet LTC-5337P

Spec No.: DS-30-96-143

Effective Date: 11/04/2000

Revision: -

LITE-ON DCC

RELEASE

BNS-OD-FC001/A4

FEATURES

- * 0.52 inch (13.2 mm) DIGIT HEIGHT.
- * CONTINUOUS UNIFORM SEGMENTS.
- * LOW POWER REQUIREMENT.
- * EXCELLENT CHARACTERS APPEARANCE.
- * HIGH BRIGHTNESS & HIGH CONTRAST.
- * WIDE VIEWING ANGLE.
- * SOLID STATE RELIABILITY.
- * CATEGORIZED FOR LUMINOUS INTENSITY.

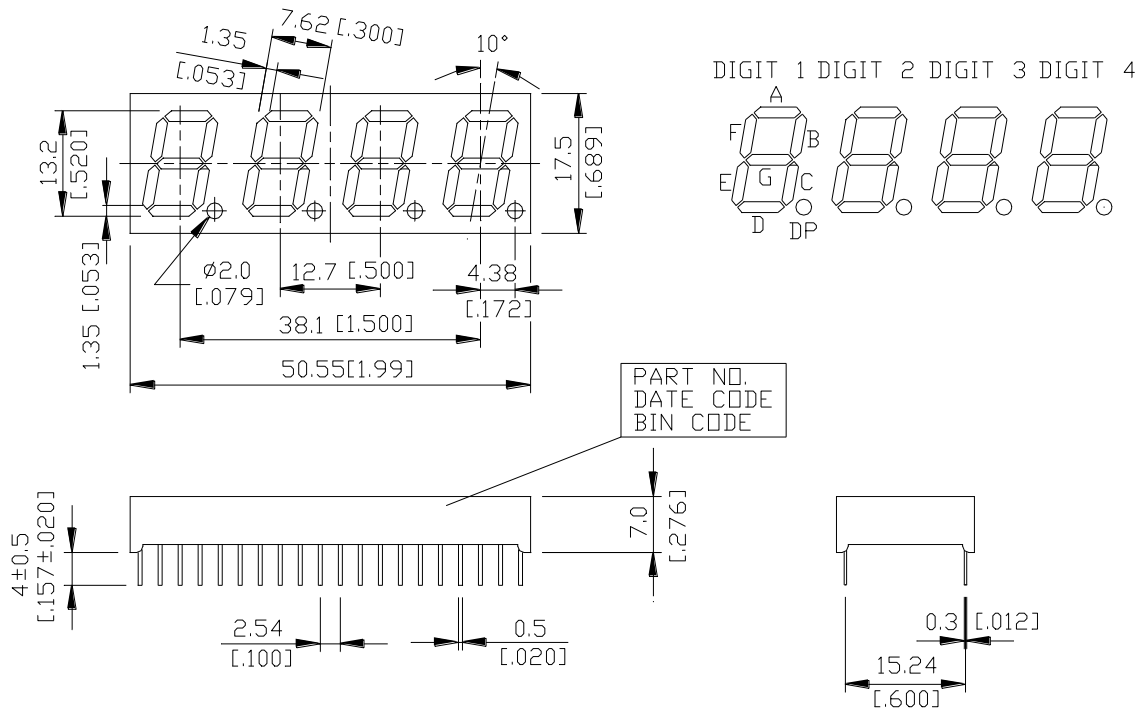
DESCRIPTION

The LTC-5337P is a 0.52 inch (13.2 mm) digit height quadruple digit seven-segment display. This device utilizes bright red LED chips, which are made from GaP on a transparent GaP substrate, and has a gray face and white segments.

DEVICE

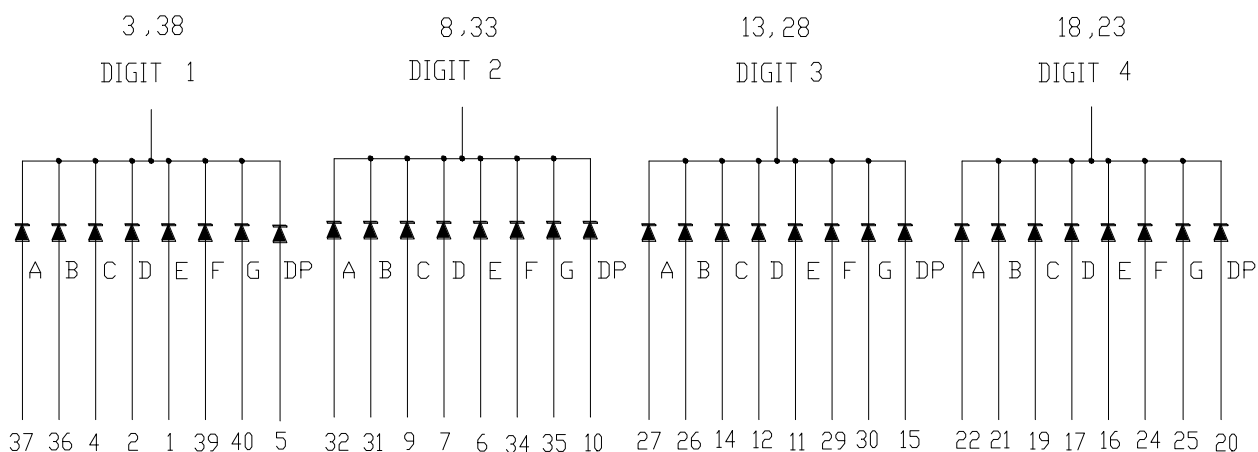
PART NO.	DESCRIPTION
Bright Red	Common Cathode Rt. Hand Decimal
LTC-5337P	

PACKAGE DIMENSIONS



NOTES: All dimensions are in millimeters. Tolerances are ± 0.25 mm (0.01") unless otherwise noted.

INTERNAL CIRCUIT DIAGRAM



PIN CONNECTION

NO.	CONNECTION	NO.	CONNECTION
1	ANODE E (DIGIT 1)	21	ANODE B (DIGIT 4)
2	ANODE D (DIGIT 1)	22	ANODE A (DIGIT 4)
3	COMMON CATHODE (DIGIT 1)	23	COMMON CATHODE (DIGIT 4)
4	ANODE C (DIGIT 1)	24	ANODE F (DIGIT 4)
5	ANODE D.P. (DIGIT 1)	25	ANODE G (DIGIT 4)
6	ANODE E (DIGIT 2)	26	ANODE B (DIGIT 3)
7	ANODE D (DIGIT 2)	27	ANODE A (DIGIT 3)
8	COMMON CATHODE (DIGIT 2)	28	COMMON CATHODE (DIGIT 3)
9	ANODE C (DIGIT 2)	29	ANODE F (DIGIT 3)
10	ANODE D.P. (DIGIT 2)	30	ANODE G (DIGIT 3)
11	ANODE E (DIGIT 3)	31	ANODE B (DIGIT 2)
12	ANODE D (DIGIT 3)	32	ANODE A (DIGIT 2)
13	COMMON CATHODE (DIGIT 3)	33	COMMON CATHODE (DIGIT 2)
14	ANODE C (DIGIT 3)	34	ANODE F (DIGIT 2)
15	ANODE D.P. (DIGIT 3)	35	ANODE G (DIGIT 2)
16	ANODE E (DIGIT 4)	36	ANODE B (DIGIT 1)
17	ANODE D (DIGIT 4)	37	ANODE A (DIGIT 1)
18	COMMON CATHODE (DIGIT 4)	38	COMMON CATHODE (DIGIT 1)
19	ANODE C (DIGIT 4)	39	ANODE F (DIGIT 1)
20	ANODE D.P. (DIGIT 4)	40	ANODE G (DIGIT 1)

ABSOLUTE MAXIMUM RATING AT Ta=25°C

PARAMETER	MAXIMUM RATING	UNIT
Power Dissipation Per Segment	40	mW
Peak Forward Current Per Segment (1/10 Duty Cycle, 0.1ms Pulse Width)	60	mA
Continuous Forward Current Per Segment	15	mA
Derating Linear From 25°C Per Segment	0.2	mA/°C
Reverse Voltage Per Segment	5	V
Operating Temperature Range	-35°C to +85°C	
Storage Temperature Range	-35°C to +85°C	
Solder Temperature: max 260°C for max 3sec at 1.6mm below seating plane.		

ELECTRICAL / OPTICAL CHARACTERISTICS AT Ta=25°C

PARAMETER	SYMBOL	MIN.	TYP.	MAX.	UNIT	TEST CONDITION
Average Luminous Intensity	I _v	320	800		μcd	I _F =10mA
Peak Emission Wavelength	λ _p		697		nm	I _F =20mA
Spectral Line Half-Width	Δλ		90		nm	I _F =20mA
Dominant Wavelength	λ _d		657		nm	I _F =20mA
Forward Voltage Per Segment	V _F		2.1	2.6	V	I _F =20mA
Reverse Current Per Segment	I _R			100	μA	V _R =5V
Luminous Intensity Matching Ratio	I _v -m			2:1		I _F =10mA

Note: Luminous intensity is measured with a light sensor and filter combination that approximates the CIE (Commission Internationale De L'Eclairage) eye-response curve.

TYPICAL ELECTRICAL / OPTICAL CHARACTERISTIC CURVES

(25°C Ambient Temperature Unless Otherwise Noted)

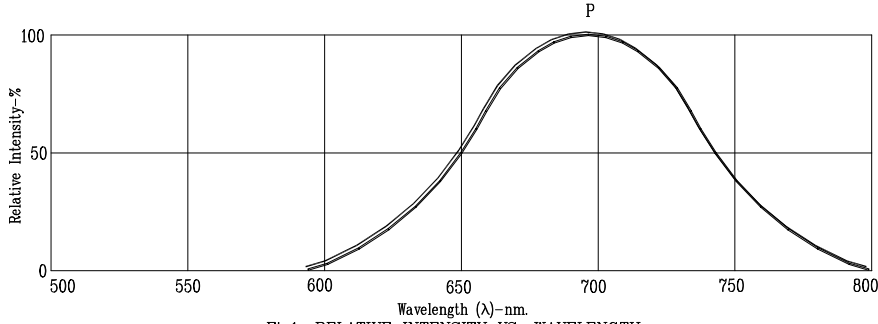


Fig1. RELATIVE INTENSITY VS. WAVELENGTH

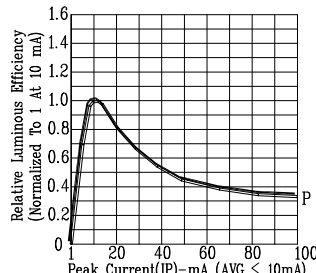


Fig2. RELATIVE LUMINOUS EFFICIENCY (LUMINOUS INTENSITY PER UNIT CURRENT) VS. PEAK CURRENT (REFRESH RATE 1KHz)

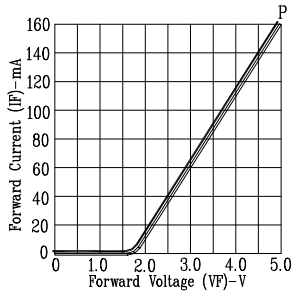


Fig3. FORWARD CURRENT VS. FORWARD VOLTAGE

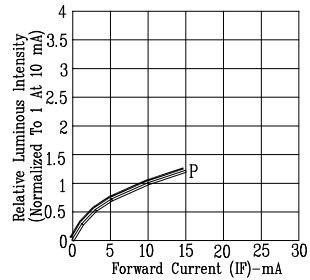


Fig4. RELATIVE LUMINOUS INTENSITY VS. FORWARD CURRENT

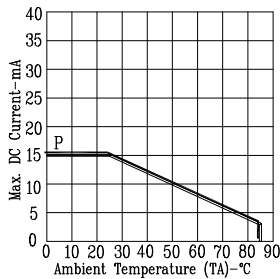


Fig5. MAX. ALLOWABLE DC CURRENT VS. AMBIENT TEMPERATURE.

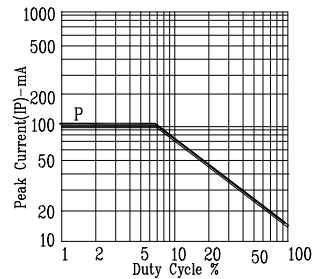


Fig6. MAX. PEAK CURRENT VS. DUTY CYCLE % (REFRESH RATE 1KHz)

NOTE: P=BRIGHT RED