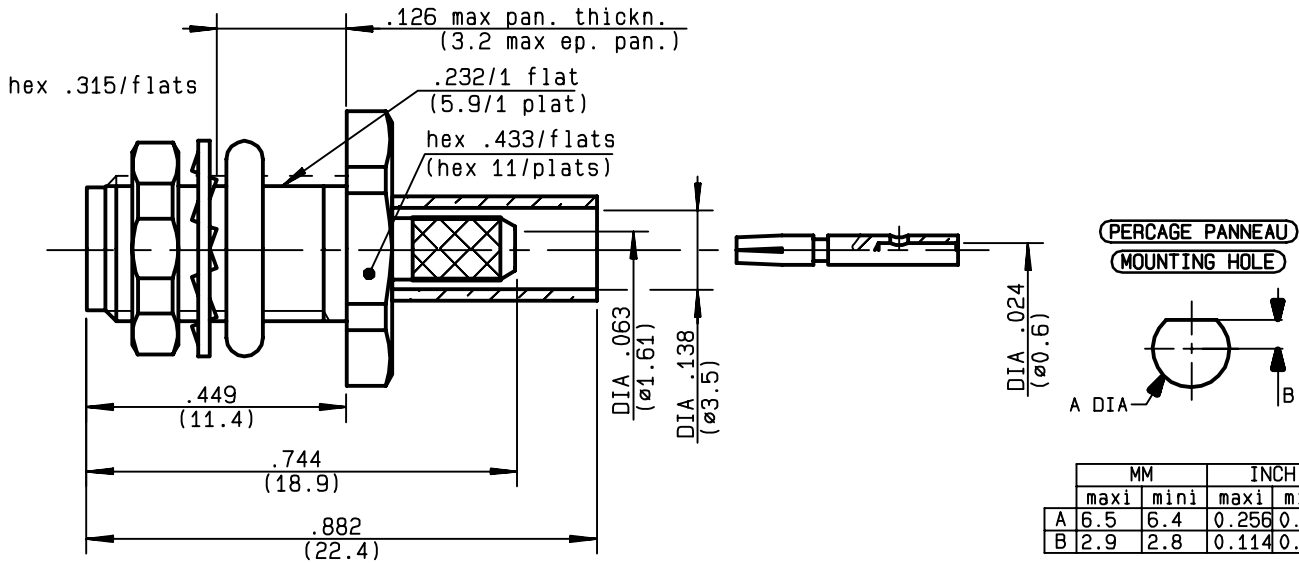


**STRAIGHT BULKHEAD JACK PANEL SEAL
CRIMP TYPE - CABLE 2.6/50 D**

R125.322.030
SERIES SMA



	MM		INCH	
	maxi	mini	maxi	mini
A	6.5	6.4	0.256	0.25
B	2.9	2.8	0.114	0.11

NOMINAL IMPEDANCE	50	Ω
FREQUENCY RANGE	0-12.4	GHz
TEMPERATURE RATING	-65/+165	$^{\circ}C$
V.S.W.R	1.15 + .02 x F(GHz)Maxi	
RF INSERTION LOSS	0.06 \sqrt{F} (GHz) dB Maxi	
VOLTAGE RATING	250	Veff Maxi
DIELECTRIC WITHSTANDING VOLTAGE	750	Veff Mini
INSULATION RESISTANCE	5000	M Ω Mini
HERMETIC SEAL	NA	Atm.cm ³ /s
LEAKAGE (pressurized only)	NA	
MECHANICAL DURABILITY	500	Cycles
WEIGHT	3.77	gr
SPECIFICATION		

CABLES : **K02252D**
RD 316

OTHERS CHARACTERISTICS

CABLE RETENTION	110	N Mini
CENTER CONTACT RETENTION		
Axial force - mating end	15	N Mini
Axial force - opposite end	15	N Mini
Torque	NA	cm.N Mini
RECOMMENDED TORQUES		
Mating	NA	cm.N
Panel nut	150	cm.N
Clamp nut	NA	cm.N

CONNECTOR PARTS MATERIALS

BODY	STAINLESS STEEL
OUTER CONTACT	
CENTER CONTACT	BERYLLIUM COPPER
INSULATOR	PTFE
GASKET	SILICONE RUBBER
OTHERS PIECES	STAINLESS STEEL

FINISH (all values are given in micrometers)

BODY	GOLD 0.8 OVER NICKEL 2
OUTER CONTACT	
CENTER CONTACT	GOLD 1.3 OVER NICKEL 2
INSULATOR	-
GASKET	-
OTHERS PIECES	GOLD 0.8 OVER NICKEL 2

ISSUE	CREATION DATE	FILE PART-NUMBER
9840C00	13/07/1994	92-0132-795



RADIALL[®]

Connect to the future

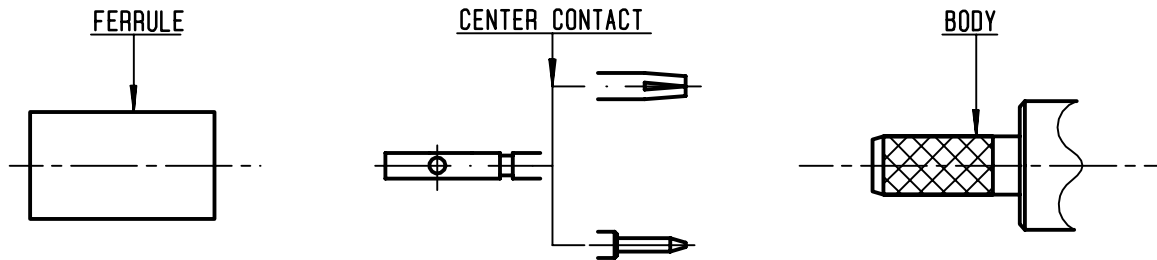
The information given here is subject to change without notice.
Design changes may be in order to improve the product.

LELEU



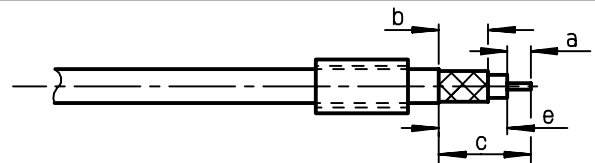
R125.322.030

ISSUE **9840C00** SERIES **SMA**



①

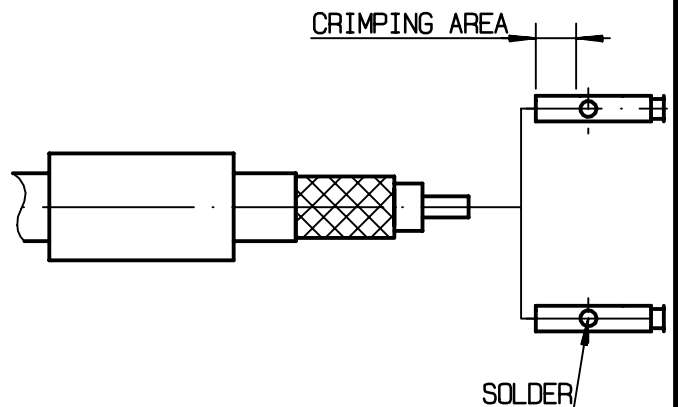
Slide onto the cable the ferrule
Strip the cable .
-
-



Stripping	a	b	c	d	e
inch	0.13	0.236	0.429	0	0.299
mm	3.3	6	10.9		7.6

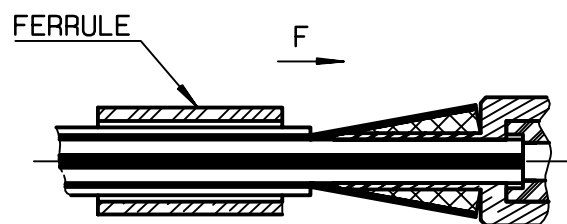
②

2-1 If crimping: Slide on the centre contact until it bottoms against cable dielectric. Crimp centre contact.
Crimping tool: R282 281 000 + positionner R282 967 012 - position 5
-
2-2 If solder: Slide the centre contact until it bottoms against cable dielectric. Solder it.



③

Fan the braid .
Slide cable into the body until it bottoms against insulator and contact snaps into insulator. Slide the ferrule over the braid. (in direction F).



④

Crimp the ferrule with crimping tool R 282 271 000 (Hex. : .151) or crimping tool R282 293 000 (M22520/5-01) + dies R282 235 037 (M22520/5-37)
Cut the excess of braid .
-
-
-
-

