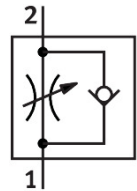


One-way flow control valve GRLA-1/8-QB-5/32-U

Part number: 534656

FESTO



 [General operating condition](#)

Data sheet

| Feature | Value |
|---|--|
| Valve function | Exhaust air flow control non-return function |
| Pneumatic connection 1 | QB-5/32 |
| Pneumatic connection 2 | 1/8 NPT |
| Actuation type | Manual |
| Adjusting element | Slotted screw |
| Type of mounting | Screw-in With external thread |
| Standard nominal flow rate in flow control direction | 961.02 l/min |
| Standard nominal flow rate in non-return direction | 741.102 l/min ... 978.814 l/min |
| Ambient temperature | 0 °C ... 60 °C |
| Mounting position | Any |
| Symbol | 00991452 |
| Operating pressure for entire temperature range | -0.951 bar ... 7.998 bar |
| Standard flow rate in flow control direction 6 → 0 bar | 1461.9 l/min |
| Standard flow rate in non-return direction at 6 → 0 bar | 1449.153 l/min ... 1512.712 l/min |
| Operating medium | Compressed air as per ISO 8573-1:2010 [7:4:4] |
| Information on operating and pilot media | Operation with oil lubrication possible (required for further use) |
| LABS (PWIS) conformity | VDMA24364 zone III |
| Temperature of medium | 0 °C ... 60 °C |
| Max. tightening torque | 7.05 Nm |
| Product weight | 18.711 g |
| Material of screwed plug | Brass Nickel-plated |
| Note on materials | RoHS-compliant |
| Seals material | NBR |
| Hollow bolt material | Brass Nickel-plated |
| Releasing ring material | POM |
| Knurled head material | Brass Nickel-plated |
| Material of adjusting screw | Brass Nickel-plated |
| Swivel joint material | PBT-reinforced |