

Pitch: 1.27x2.54mm(0.05 " x0.1 ") 0.46 SQ Pin
 Pin Header Dual Rows S.M.T Type

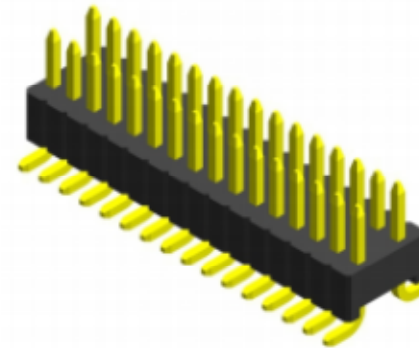
Specifications

Current Rating: 1.0 Ampere
 Insulation Resistance: 1000MΩ Min
 Dielectric Withstanding: 300V AC
 Contact Resistance: 20mΩ Max
 Operating Temperature: -40℃ to +105℃

Materials

Contact Material: Brass
 Insulation Material: Polyester, UL 94V-0
 LCP/NL6T

All material RoHS&Reach Compliant
 Halogen-free is available



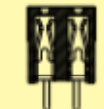
Mating with



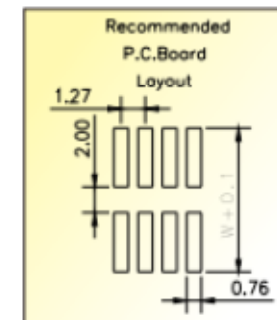
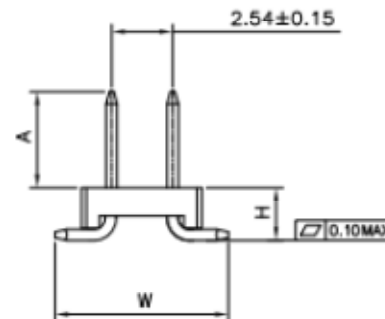
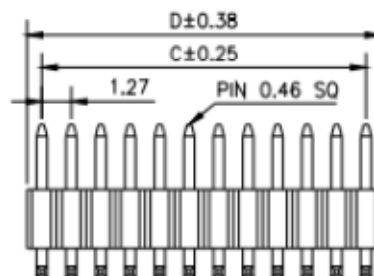
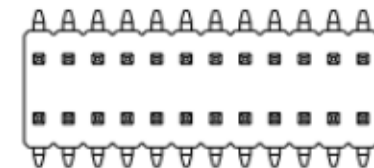
HFJDS46



HFJDM57



HFJDS57



No. of Pins/Row	Dimension Information		No. of Pins/Row	Dimension Information		No. of Pins/Row	Dimension Information		No. of Pins/Row	Dimension Information	
	C	D		C	D		C	D		C	D
02	1.27	2.54	12	13.97	15.24	22	26.67	27.94	32	39.37	40.64
03	2.54	3.81	13	15.24	16.51	23	27.94	29.21	33	40.64	41.91
04	3.81	5.08	14	16.51	17.78	24	29.21	30.48	34	41.91	43.18
05	5.08	6.35	15	17.78	19.05	25	30.48	31.75	35	43.18	44.45
06	6.35	7.62	16	19.05	20.32	26	31.75	33.02	36	44.45	45.72
07	7.62	8.89	17	20.32	21.59	27	33.02	34.29	37	45.72	46.99
08	8.89	10.16	18	21.59	22.86	28	34.29	35.56	38	46.99	48.26
09	10.16	11.43	19	22.86	24.13	29	35.56	36.83	39	48.26	49.53
10	11.43	12.70	20	24.13	25.40	30	36.83	38.10	40	49.53	50.80
11	12.70	13.97	21	25.40	26.67	31	38.10	39.37			