

**ASSEMBLY-
TOGGLE SWITCH**

(M) 6AT4
ISSUE 9

6AT4

M

DRAWING NUMBER

10X
14

ISSUE
R13

REVISIONS

A CO9429
R. B. C
8 JULY 58

B CORR.
K.F.M.
31 JAN. 56

C CO13507
M.B.F.
2 APR 59

D CO37377
K.P.K.
3 AUG 78

E CO51446
KAG
12 MAY 82

REPLACES

RELEASE NO.

H.U. 8 JULY 55

CHECK

8 JULY 55

GRH

CHECK

8 JULY 55

FKK

CHECK

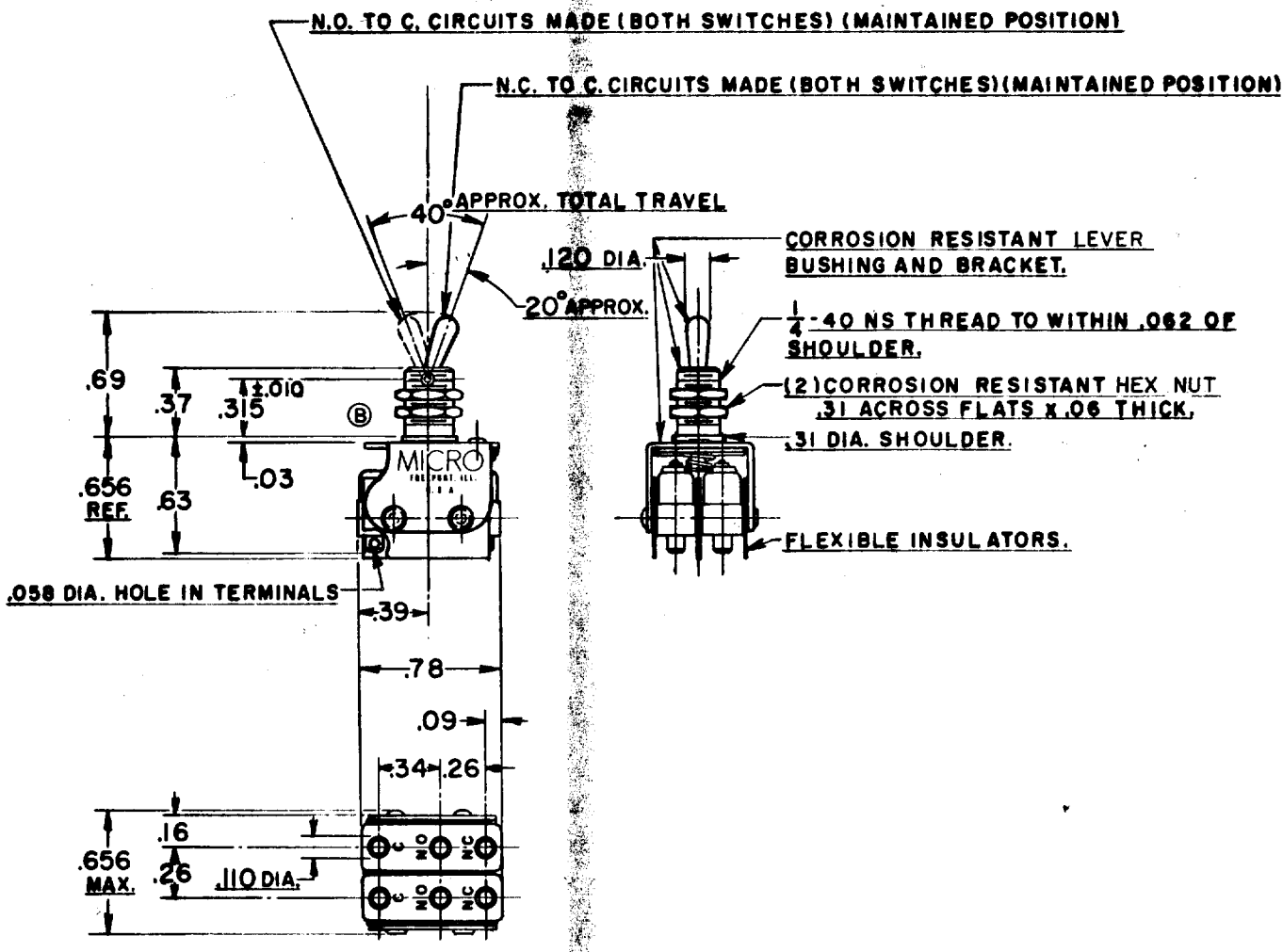
8 JULY 55

CHECK

8 JULY 55

DRAWN

R. G. C.



NOTE -
1-UNIT INCLUDES (2) CAT. LIST. IISMI BASIC SWITCHES.
2-TERMINALS ARE PLATED FOR SOLDERING.
3-SWITCHES DO NOT OPERATE SIMULTANEOUSLY.

THIS DRAWING COVERS A PROPRIETARY ITEM AND IS THE PROPERTY OF MICRO SWITCH, A DIVISION OF HONEYWELL. THIS DRAWING IS NOT TO BE COPIED OR USED WITHOUT THE APPROVAL OF MICRO SWITCH.

CHARACTERISTICS	ELECTRICAL DATA	SCALE FULL
	CONTACT ARRANGEMENT (2) S. P. D. T.	DO NOT SCALE PRINT
	BREAK DISTANCE .010 MIN.	UNLESS OTHERWISE SPECIFIED DIMENSIONS ARE IN INCHES
	250 VAC ----- 5 AMP	TOLERANCES ARE:
	30 VOLTS DC RATING	ONE PLACE (.0) ±.030
	INDUCTIVE ----- SEA LEVEL ----- 3 AMP	TWO PLACE (.00) ±.015
	50,000 FT. ----- 2.5 AMP	THREE PLACE (.000) ±.005
	RESISTIVE ----- SEA LEVEL ----- 5 AMP	ANGLES ±
	50,000 FT. ----- 5 AMP	
	MAXIMUM INRUSH ----- 24 AMP	WEIGHT - .03 LB.