



AOS
SEMICONDUCTOR

产品规格说明书

Product Data Sheet

TL431-0.5%

WEB | www.aossemi.cn 



电源管理IC



通信接口芯片



二三极管



LDO稳压器



逻辑器件



MOSFETs



运算放大器



显示驱动



MCU单片机



光电器件

TL431-0.5%

Data Sheet

Voltage Reference Chip

■ 概述 General Description

The TL431 is a three-terminal adjustable shunt regulator with guaranteed thermal stability over a full operation range. It features sharp turn-on characteristics, low temperature coefficient and low output impedance, which make it ideal substitute for Zener diode in applications such as switching power supply, charger and other adjustable regulators.

The output voltage of TL431 can be set to any value between V (2.5V) and the corresponding maximum cathode voltage (36V).

The TL431 is offered in two grade initial voltage tolerance at 25°C, 0.5% and 1%. This IC is available in 2 packages: T0-92 and SOT-23.

TL431 是三端可调的，全温度范围稳定的并联调整器。具有快速启动、低温漂和低输出阻抗的特性，在开关电源、充电和其他可调调整器应用中是齐纳二极管的理想替代器件。

输出电压范围为 V_{ref} (2.5V) 到最大阴极电压 (36V)。0.5% 和 1% 两种精度 (25°C)。

封装：T0-92 和 SOT-23。

■ 特点 Features

- ◆ 可编程精确的输出电压：2.5V - 36V
Programmable Precise Output Voltage from 2.5V to 6V
- ◆ 容性负载下高度稳定
High Stability Under Capacitive Load
- ◆ 低阴极电流，典型值 240 μ A
Low Minimum Cathode Current for Regulation: 240 μ A(Typ.)
- ◆ 低温漂，典型值 5 mV
Low Temperature Deviation: 5mV Typical
- ◆ 电流能力：240 μ A - 100mA
Sink Current Capacity from 240 μ A to 100mA
- ◆ 宽工作温度范围：-25°C - 125°C
Wide Operating Range: -25°C to 125°C

■ 应用 Applications

- ◆ 充电器 Charger
- ◆ 电压适配器 Voltage Adapter
- ◆ 开关电源 Switching Power supply
- ◆ 图形卡 Graphic Card
- ◆ 精确电压基准 Precision Voltage Reference



T0-92 (Bulk Packing)



SOT-23

Figure 1. Package Type of TL431

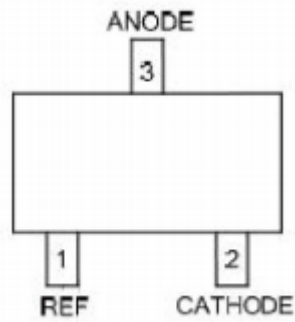


TL431-0.5%

Data Sheet

■ 管脚排列 Pin Configuration

N Package (SOT-23)



Z Package (T0-92(Bulk Package))

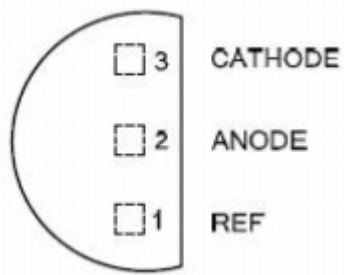
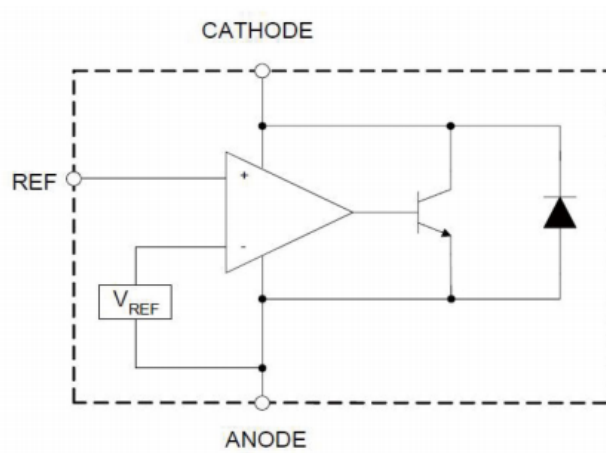


Figure 2. Pin Configuration of TL431 (Top View)

■ 功能框图 Functional Block Diagram



TL431-0.5%

Data Sheet

绝对最大额定值 Absolute Maximum Rating(Note 1)

项目 Parameter	符号 Symbol	数值 Value	单位 Unit
阴极电压 Cathode Voltage	V_{KA}	36	V
阴极电流范围 Cathode Current Range	I_{KA}	-100 to 150	mA
参考输入电流范围 Reference Input Current Range	V_{REF}	10	mA
结温 Junction Temperature	T_J	150	°C
存储温度 Storage Temperature Range	V_{STG}	-65 to 150	°C
ESD(人体模型) ESD(Human Body Model)	ESD	6000	V
ESD(机器模型) ESD(Machine Model)	ESD	400	V

Note 1: Stresses greater than those listed under “Absolute Maximum Ratings” may cause permanent damage to the device. These are stress ratings only, and functional operation of the device at these or any other conditions beyond those indicated under “Recommended Operating Conditions” is not implied. Exposure to “Absolute Maximum Ratings” for extended periods may affect device reliability.

备注1: 超过“绝对最大额定值”的应力可能会造成器件永久损坏。这些仅是应力额定值，器件工作在上述条件以及超出“建议工作条件”的情况是不可取的。长期处于“绝对最大额定值”可能影响器件的可靠性。

环境温度下的额定功耗 Dissipation Rating - Free-air Temperature (Note 2)

Package	Ta=25 Power Rating	Derating Factor Above Ta=25	Ta=70 Power Rating	Ta=85 Power Rating
T0-92	700mW	6.2mW/°C	491mW	398mW
SOT-23	230mW	1.8mW/°C	149mW	122mW



TL431-0.5%

Data Sheet

Note 2: The safe-work power dissipation of TL431 is under 0.25W while the package is TO-92 which is the ordinary transistor package. Above the power dissipation, the package should be changed to S0 or DIP and the dissipation can be to 0.5W. The margin of power should be enough large because the reference voltage will fall as large power dissipation and high temperature rising. TL431 only is a reference voltage source. It is used to output a stable reference voltage, not large power.

备注2：TL431的安全使用功率一般设计在0.25mW以下（TO-92封装，也就是普通小三极管封装），如果要较大的功率，可以考虑一下S0封装或DIP封装的，这两种封装的功率设计为0.5W也很稳定。给TL431留的功率余量较大，是考虑到TL431在大功率、高温升的情况下稳压进度会下降。TL431只是一种基准电压源，它的最大作用是提供稳定的基准电压，而不是输出大功率。

■ 推荐工作条件 Recommended Operating Conditions

项目 Parameter	符号 Symbol	最小值 Min	最大值 Max	单位 Unit
阴极电压 Cathode Voltage	V_{KA}	V	36	V
阴极电流 Cathode Current	I_{KA}	0.3	100	mA
工作环境温度 Operating Ambient Temperature Range	T_A	-25	125	

■ 电特性表 Electrical Characteristics

Operating Conditions: $T_A=25^\circ\text{C}$, unless otherwise specified

工作条件：除非特指，环境温度25

项目 Parameter	测试电路 Test Circuit	符号 Symbol	测试条件 Conditions	数值 Value			单位 Unit
				最小 Min	典型 Typ	最大 Max	
参考电压 Reference Voltage	4	V_{REF}	$V_{KA}=V_{REF}$	2.487	2.500	1.513	V
基准电压温漂 Deviation of Reference Voltage Over Full Temperature Range	4	ΔV_{REF}	$V_{KA}=V_{REF}$ $I_{KA}=10\text{mA}$ -20 to 110		5	10	mV
基准电压的线性调整率 Ratio of Change in Reference Voltage to the Change in Cathode Voltage	5	$\frac{\Delta V_{REF}}{\Delta V_{KA}}$	$I_{KA}=10\text{mA}$ $V_{KA}=10\text{V}$ to V_{REF}		+0.4		mV/V
			$I_{KA}=10\text{mA}$ $V_{KA}=36\text{V}$ to 10V		-0.4		
基准电流 Reference Current	5	I_{REF}	$I_{KA}=10\text{mA}$ $R_1=10\text{k}$ $R_2=\infty$		1.0	2.5	μA
基准电流温漂 Deviation of Reference Current Over Full Temperature Range	5	ΔI_{REF}	$I_{KA}=10\text{mA}$ $R_1=10\text{k}$ $R_2=\infty$ $T_A=-10$ to 85		0.2	0.4	μA



TL431-0.5%

Data Sheet

(续上表)

项目 Parameter	测试电 路 Test Circuit	符号 Symbol	测试条件 Conditions	数值 Value			单位 Unit
				最小 Min	典型 Typ	最大 Max	
最小阴极电流 Minimum Cathode Current for Regulation	4	$I^{KA}(\text{Min})$	$V_{KA}=V_{REF}$		240	500	μA
夹断阴极电流 Off-state Cathode Current	6	$I^{KA}(\text{Max})$	$V_{KA}=36\text{V}$ $V_{REF}=0$		0.08	1	μA
动态阻抗 Dynamic Impedance	4	Z_{KA}	$I_{KA}=V_{REF}$ $V_{KA}=1\text{V to }100\text{mA}$ $f=1.0\text{kHz}$		0.15	0.5	
热阻 Thermal Resistance		JC	T0-92		68		/W
			SOT-89		70		
			SOT-23		113		

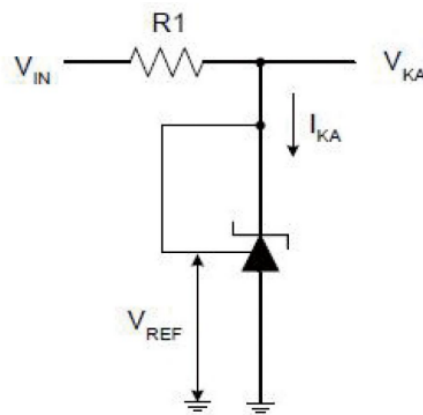


Figure 4. Test Circuit 4 for $V_{KA}=V_{REF}$

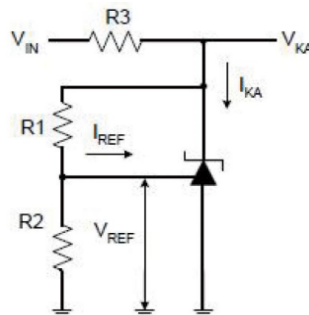


Figure 5. Test Circuit 5 for $V_{KA}=(1+R_2/R_1) \cdot I_{REF} \cdot R_1$



TL431-0.5%

Data Sheet

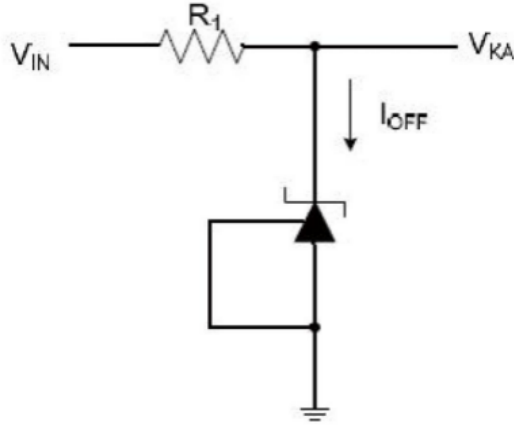


Figure 6. Test Circuit 6 for I_{OFF}

■ 典型性能 Typical Performance Characteristics

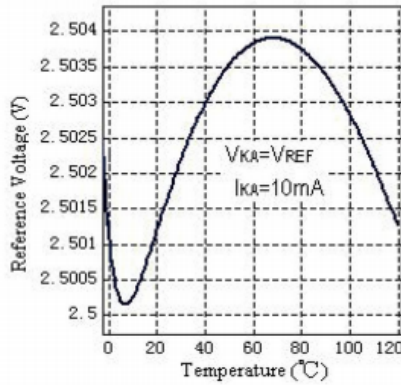


Figure 7. Reference Voltage vs. Ambient Temperature

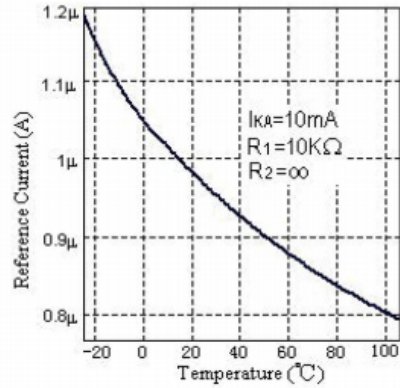


Figure 8. Reference Current vs. Ambient Temperature

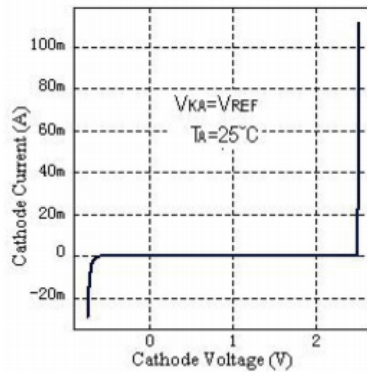


Figure 9. Cathode Current vs. Cathode Voltage

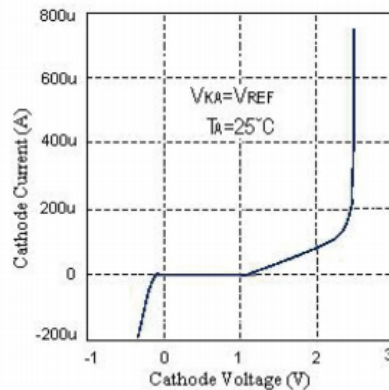


Figure 10. Cathode Current vs. Cathode Voltage



TL431-0.5%

Data Sheet

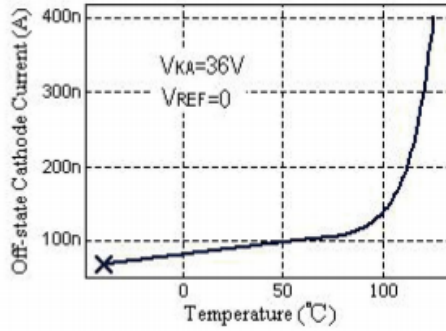


Figure 11. Off-state Cathode Current vs. Ambient Temperature

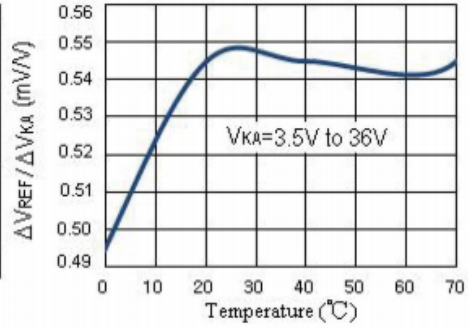


Figure 12. Ratio of Delta Reference Voltage to the Ratio of Delta Cathode Voltage

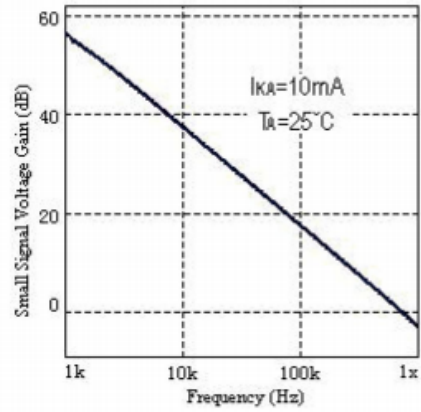
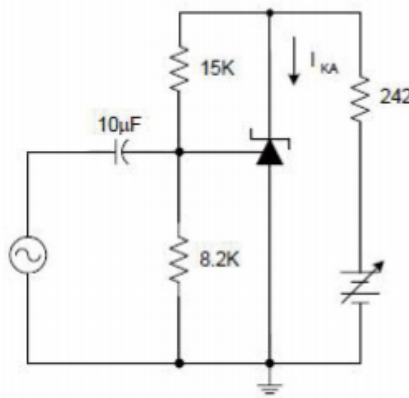


Figure 13. Small Signal Voltage Gain vs. Frequency

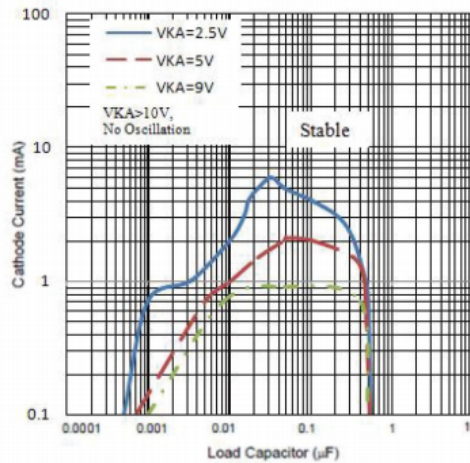
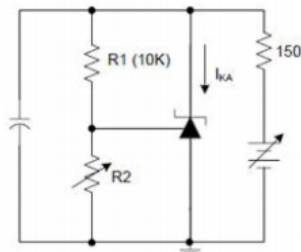


Figure 14. Stability Boundary Conditions vs. Capacitance



TL431-0.5%

Data Sheet

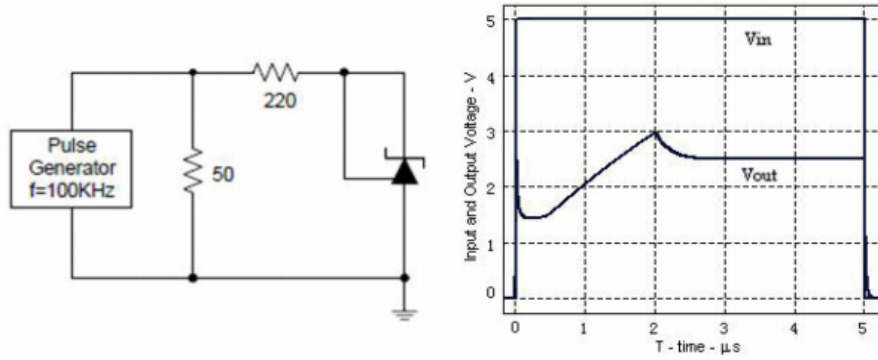


Figure 15. Pulse Response of Input and Output Voltage

■ 典型应用 Typical Application

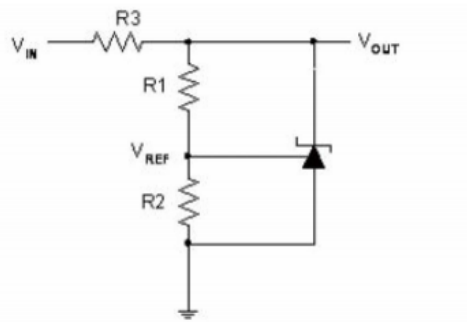


Figure 16. Shunt Regulator

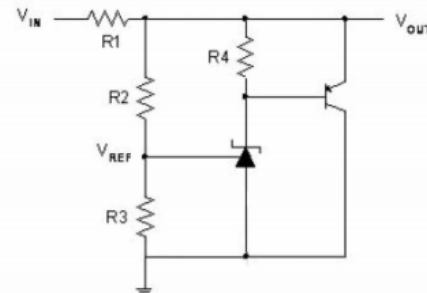


Figure 17. High Current Shunt Regulator

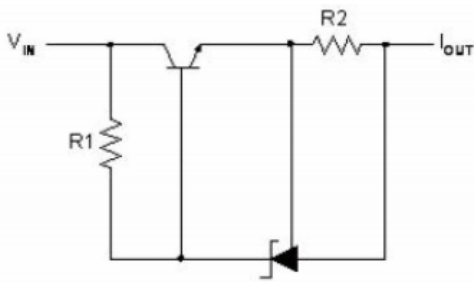


Figure 18. Current Source or Current Limit

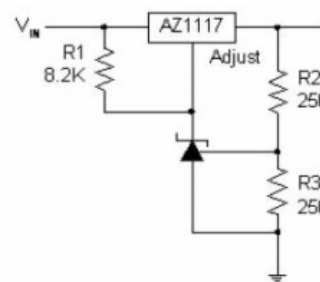


Figure 19. Precision 5V 1A Regulator



TL431-0.5%

Data Sheet

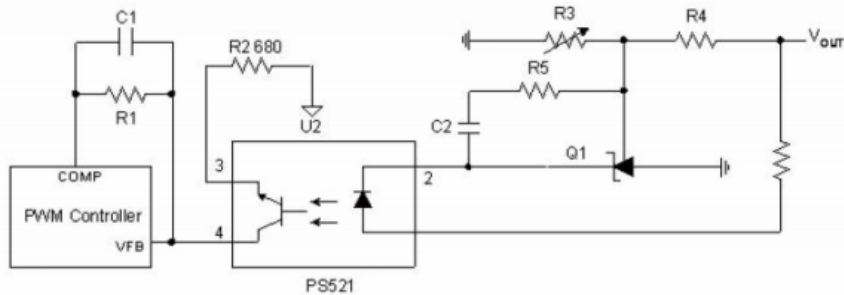


Figure 20 PWM Converter with Reference

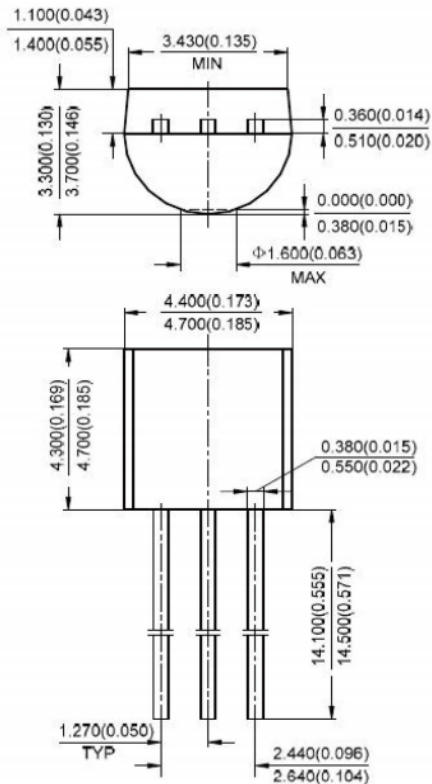
Note 3: Senichip are responsible for consistency of product. The devices should be working in recommended condition. Before new design product being bulk production, pilot production should be done. Senichip assumes no liability for applications assistance or customer design product.

备注3: 客户应在推荐工作条件下使用器件。客户设计新产品量产前应进行小批量试产，西安晟芯半导体公司不对客户设计产品及其应用支持负责。

■ 外观尺寸 Mechanical Dimensions

T0-92 (Bulk Packing)

Unit: mm (inch)



TL431-0.5%

Data Sheet

■ 外观尺寸 Mechanical Dimensions

T0-23

Unit: mm (inch)

