



**AOS**  
**SEMICONDUCTOR**

## 产品规格说明书

Product Data Sheet

**AOS74AHCT1G14DCKR**

WEB | [www.aossemi.cn](http://www.aossemi.cn) 



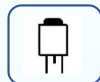
电源管理IC



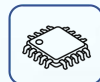
通信接口芯片



二三极管



LDO稳压器



逻辑器件



MOSFETs



运算放大器



显示驱动



MCU单片机



光电器件



## AOS74AHCT1G14 Single Schmitt-Trigger Inverter

### DESCRIPTION

The AOS74AHCT1G14 Single Schmitt-trigger inverter is designed for 2.0V to 5.5V  $V_{CC}$  operation. The AOS74AHCT1G14 device contains one inverter and performs the Boolean function  $Y = \bar{A}$ .

The device functions as an independent inverter with Schmitttrigger inputs, so the device has different input threshold levels for positive-going ( $V_{T+}$ ) and negative going ( $V_{T-}$ ) signals to provide hysteresis ( $V_T$ ) which makes the device tolerant to slow or noisy input signals.

This device is fully specified for partial-power-down applications using  $I_{off}$ . The  $I_{off}$  circuitry disables the outputs, preventing damaging current backflow through the device when it is powered down.

The AOS74AHCT1G14 is available in Green SOT23-5 and SC70-5 packages. It operates over an ambient temperature range of  $-40^{\circ}C$  to  $+125^{\circ}C$ .

### FEATURES

- Operating Voltage Range: 2.0V to 5.5V
- Low Power Consumption:  $1\mu A$ (Max)
- Operating Temperature Range:  $-40^{\circ}C$  to  $+125^{\circ}C$
- TTL-Input are Compatible
- Input Accept Voltage to 5.5V
- Output Drive:  $\pm 32mA$  at  $V_{CC}=5.0V$
- $I_{off}$  Supports Partial-Power-Down Mode Operation
- Micro Size Packages: SOT23-5, SOT353(SC70-5)

### APPLICATIONS

- AV Receiver
- Home Theaters
- Blu-ray Players and Home Theaters
- Desktops or Notebook PCs
- Digital Video Cameras(DVC)
- Mobile Phones
- Personal Navigation Device(GPS)
- Portable Media Player

### LOGIC SYMBOL



### Device Information <sup>(1)</sup>

PART NUMBER	PACKAGE	BODY SIZE (NOM)
AOS74AHCT1G14	SOT23-5	2.92mm × 1.60mm
	SC70-5	2.10mm × 1.25mm

(1)For all available packages, see the orderable addendum at the end of the data sheet.

### FUNCTION TABLE

INPUTS	OUTPUT
A	Y
H	L
L	H

$Y = \bar{A}$   
 H=High Voltage Level  
 L=Low Voltage Level



## PACKAGE/ORDERING INFORMATION

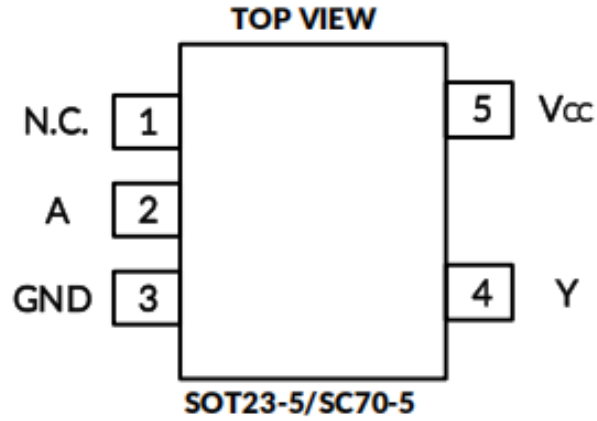
PRODUCT	ORDERING NUMBER	TEMPERATURE RANGE	PACKAGE LEAD	PACKAGE MARKING <sup>(2)</sup>	MSL <sup>(3)</sup>	PACKAGE OPTION
AOS74AHCT1G14	AOS74AHCT1G14DBVR	-40°C~+125°C	SOT23-5	1GT14	MSL3	Tape and Reel , 3000
	AOS74AHCT1G14DCKR	-40°C~+125°C	SC70-5 <sup>(4)</sup>	1GT14	MSL3	Tape and Reel , 3000

### NOTE:

- (1) This information is the most current data available for the designated devices. This data is subject to change without notice and revision of this document. For browser-based versions of this data sheet, refer to the right-hand navigation.
- (2) There may be additional marking, which relates to the lot trace code information (data code and vendor code), the logo or the environmental category on the device.
- (3) MSL, The Moisture Sensitivity Level rating according to the JEDEC industry standard classifications.
- (4) Equivalent to SOT353.



PIN CONFIGURATIONS



PIN DESCRIPTION

PIN	NAME	I/O TYPE <sup>(1)</sup>	FUNCTION
SOT23-5/SC70-5			
1	N. C.	-	Not connected
2	A	I	Input
3	GND	-	Ground
4	Y	O	Output
5	V <sub>cc</sub>	P	Power Pin

(1) I=input, O=output, P=power.



## Specifications

## Absolute Maximum Ratings

Over operating free-air temperature range (unless otherwise noted)<sup>(1)</sup>

SYMBOL	PARAMETER		MIN	MAX	UNIT
V <sub>CC</sub>	Supply voltage range		-0.5	6.5	V
V <sub>I</sub>	Input voltage range <sup>(2)</sup>		-0.5	6.5	
V <sub>O</sub>	Voltage range applied to any output in the high-impedance or power-off state <sup>(2)</sup>		-0.5	6.5	
V <sub>O</sub>	Voltage range applied to any output in the high or low state <sup>(2)(3)</sup>		-0.5	V <sub>CC</sub> +0.5	
I <sub>IK</sub>	Input clamp current	V <sub>I</sub> <0		-50	mA
I <sub>OK</sub>	Output clamp current	V <sub>O</sub> <0		-50	
I <sub>O</sub>	Continuous output current			± 50	
	Continuous current through V <sub>CC</sub> or GND			± 100	
J <sub>A</sub>	Package thermal impedance <sup>(4)</sup>		SOT23-5	208	°C/W
			SC70-5	283	
T <sub>J</sub>	Junction temperature <sup>(5)</sup>			150	°C
T <sub>stg</sub>	Storage temperature		-65	150	

- (1) Stresses beyond those listed under *Absolute Maximum Ratings* may cause permanent damage to the device. These are stress ratings only, and functional operation of the device at these or any other conditions beyond those indicated under *Recommended Operating Conditions* is not implied. Exposure to absolute-maximum-rated conditions for extended periods may affect device reliability.
- (2) The input and output negative-voltage ratings may be exceeded if the input and output current ratings are observed.
- (3) The value of V<sub>CC</sub> is provided in the *Recommended Operating Conditions* table.
- (4) The package thermal impedance is calculated in accordance with JESD-51.
- (5) The maximum power dissipation is a function of T<sub>J(MAX)</sub>, R<sub>JA</sub>, and T<sub>A</sub>. The maximum allowable power dissipation at any ambient temperature is P<sub>D</sub> = (T<sub>J(MAX)</sub> - T<sub>A</sub>) / R<sub>JA</sub>. All numbers apply for packages soldered directly onto a PCB.



ESD Ratings

The following ESD information is provided for handling of ESD-sensitive devices in an ESD protected area only.

			VALUE	UNIT
$V_{(ESD)}$	Electrostatic discharge	Human-body model (HBM), MIL-STD-883K METHOD 3015.9	$\pm 2000$	V
		Charged-device model (CDM), ANSI/ESDA/JEDEC JS-002-2018	$\pm 1000$	
		Machine Model (MM), JESD22-A115C(2010)	$\pm 200$	



ESD SENSITIVITY CAUTION

ESD damage can range from subtle performance degradation to complete device failure. Precision integrated circuits may be more susceptible to damage because very small parametric changes could cause the device not to meet its published specifications.



**ELECTRICAL CHARACTERISTICS**

over recommended operating free-air temperature range (TYP values are at  $T_A = +25^{\circ}\text{C}$ , Full =  $-40^{\circ}\text{C}$  to  $+125^{\circ}\text{C}$ , unless otherwise noted.) <sup>(1)</sup>

**Recommended Operating Conditions**

PARAMETER	SYMBOL	TEST CONDITIONS	MIN	MAX	UNIT
Supply Voltage	$V_{CC}$	Operating	2	5.5	V
Input Voltage	$V_I$		0	5.5	
Output Voltage	$V_O$		0	5.5	
Operating Temperature	$T_A$		-40	+125	$^{\circ}\text{C}$

(1) All unused inputs of the device must be held at  $V_{CC}$  or GND to ensure proper device operation.



DC Characteristics

PARAMETER		CONDITIONS	V <sub>CC</sub>	TEMP	MIN	TYP	MAX	UNIT
V <sub>T+</sub>	Positive going input threshold voltage		2.0V	Full	0.7		1.2	V
			3.3V		1	1.5		
			4.5V to 5.5V		1.2	2		
V <sub>T-</sub>	Negative going input threshold voltage		2.0V		0.3		0.6	
			3.3V		0.5	0.9		
			4.5V to 5.5V		0.6	1.2		
V <sub>T</sub>	Hysteresis (V <sub>T+</sub> -V <sub>T-</sub> )		2.0V		0.3		0.8	
			3.3V		0.3	1		
			4.5V to 5.5V		0.3	1.2		
V <sub>OH</sub>		I <sub>OH</sub> =-100μA	2.0V to 5.5V	V <sub>CC</sub> -0.1				
			2.0V	1.6				
			3.3V	2.5				
			4.5V	3.8				
			5.0V	4.2				
			5.5V	4.8				
V <sub>OL</sub>		I <sub>OH</sub> =100μA	1.65V to 5.5V			0.1		
			2.0V			0.45		
			3.3V			0.55		
			4.5V			0.55		
			5.0V			0.5		
			5.5V			0.45		
I <sub>I</sub>	A inputs	V <sub>I</sub> =5.5V or GND	0V to 5.5V	+25	± 0.1	± 1	μA	
				Full		± 10		
I <sub>off</sub>		V <sub>I</sub> or V <sub>O</sub> =5.5V	0V	+25	± 0.1	± 1		
				Full		± 10		
I <sub>CC</sub>		V <sub>I</sub> =5.5V or GND, I <sub>O</sub> =0	2.0V to 5.5V	+25	0.1	1		
				Full		10		
I <sub>CC</sub>		One input at 3.4V, Other inputs at V <sub>CC</sub> or GND	5.5V	Full			500	

- (1) All unused inputs of the device must be held at V<sub>CC</sub> or GND to ensure proper device operation.
- (2) Limits are 100% production tested at 25°C. Limits over the operating temperature range are ensured through correlations using statistical quality control (SQC) method.
- (3) Typical values represent the most likely parametric norm as determined at the time of characterization. Actual typical values may vary over time and will also depend on the application and configuration.



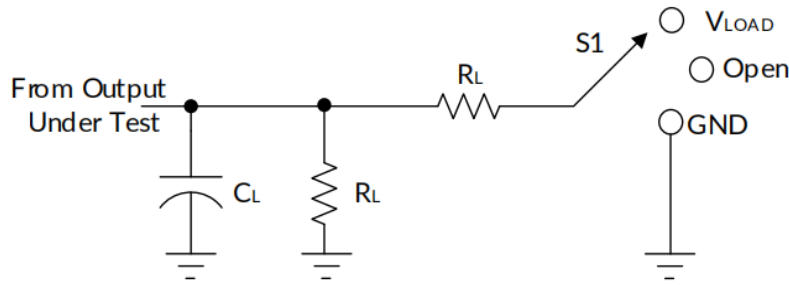
## AC Characteristics

PARAMETER	SYMBOL	TEST CONDITIONS		TEMP	MIN <sup>(2)</sup>	TYP <sup>(3)</sup>	MAX <sup>(2)</sup>	UNIT
Propagation Delay	$t_{pd}$	$V_{CC}=2.0V \pm 0.2V$	$C_L=30pF, R_L=500$	+25°C		29		ns
		$V_{CC}=3.3V \pm 0.3V$	$C_L=50pF, R_L=500$			10.4		
		$V_{CC}=5V \pm 0.5V$	$C_L=50pF, R_L=500$			7.6		
Input Capacitance	$C_i$	$V_{CC}=5V$	$V_I=V_{CC}$			4.2		pF
Power dissipation capacitance	$C_{pd}$	$V_{CC}=5V$	$f=10MHz$			16.6		

- (1) All unused inputs of the device must be held at  $V_{CC}$  or GND to ensure proper device operation.
- (2) This parameter is ensured by design and/or characterization and is not tested in
- (3) Typical values represent the most likely parametric norm as determined at the time of characterization. Actual typical values may vary over time and will also depend on the application and configuration.

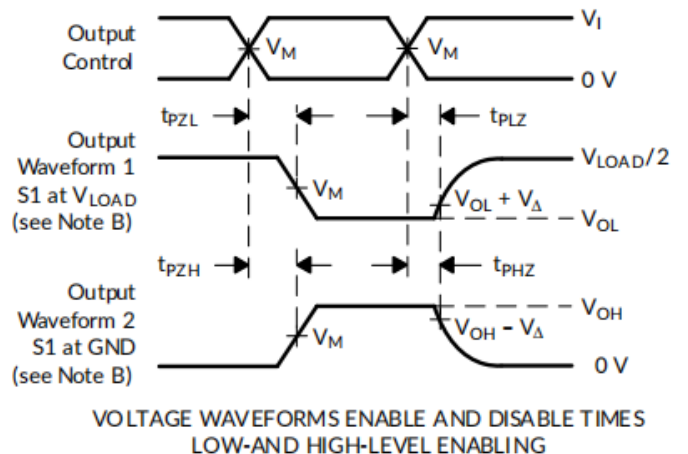
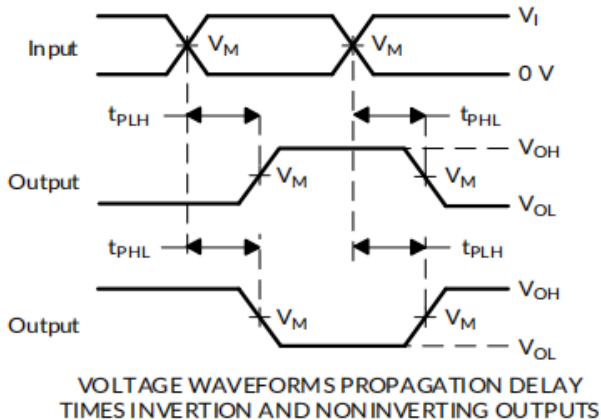
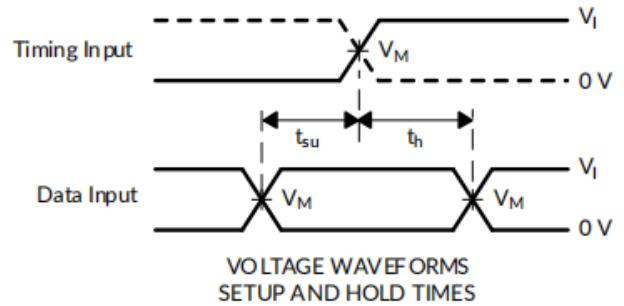
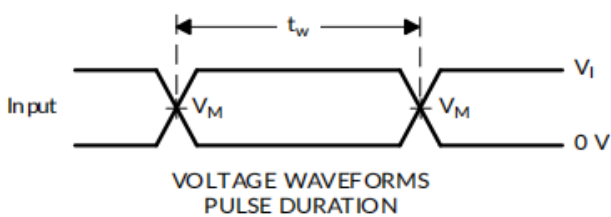


Parameter Measurement Information



TEST	S1
$t_{PLH}/t_{PHL}$	Open
$t_{PLZ}/t_{PZL}$	$V_{LOAD}$
$t_{PHZ}/t_{PZH}$	GND

$V_{CC}$	INPUTS		$V_M$	$V_{LOAD}$	$C_L$	$R_L$	V
	$V_i$	$t_r/t_f$					
$2.0V \pm 0.2V$	$V_{CC}$	$\leq 2ns$	$V_{CC}/2$	$2 \times V_{CC}$	30pF	500	0.15V
$3.3V \pm 0.3V$	3V	$\leq 2.5ns$	1.5V	6V	50pF	500	0.3V
$5V \pm 0.5V$	$V_{CC}$	$\leq 2.5ns$	$V_{CC}/2$	$2 \times V_{CC}$	50pF	500	0.3V





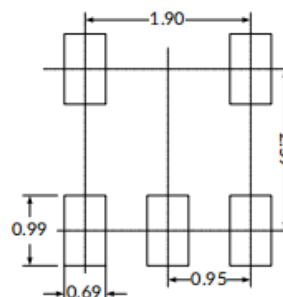
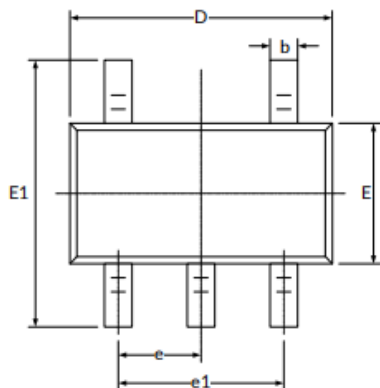
- NOTES:
- A.  $C_L$  includes probe and jig capacitance.
  - B. Waveform 1 is for an output with internal conditions such that the output is low, except when disabled by the output control.  
Waveform 2 is for an output with internal conditions such that the output is high, except when disabled by the output control.
  - C. All input pulses are supplied by generators having the following characteristics:  $PRR \leq 10\text{MHz}$ ,  $Z_0 = 50 \Omega$ .
  - D. The outputs are measured one at a time, with one transition per measurement.
  - E.  $t_{PLZ}$  and  $t_{PHZ}$  are the same as  $t_{dis}$ .
  - F.  $t_{PZL}$  and  $t_{PZH}$  are the same as  $t_{en}$ .
  - G.  $t_{PLH}$  and  $t_{PHL}$  are the same as  $t_{pd}$ .
  - H. All parameters and waveforms are not applicable to all devices.

Figure 1. Load Circuit and Voltage Waveforms

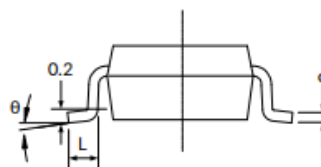
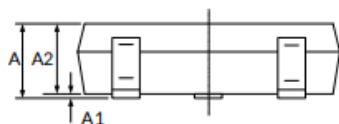


PACKAGE OUTLINE DIMENSIONS

SOT23-5<sup>(3)</sup>



RECOMMENDED LAND PATTERN (Unit: mm)



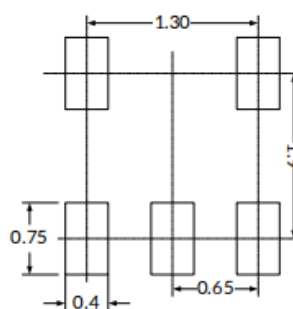
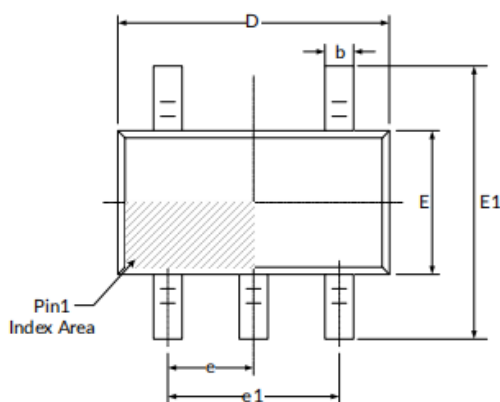
Symbol	Dimensions In Millimeters		Dimensions In Inches	
	Min	Max	Min	Max
A <sup>(1)</sup>	1.050	1.250	0.041	0.049
A1	0.000	0.100	0.000	0.004
A2	1.050	1.150	0.041	0.045
b	0.300	0.500	0.012	0.020
c	0.100	0.200	0.004	0.008
D <sup>(1)</sup>	2.820	3.020	0.111	0.119
E <sup>(1)</sup>	1.500	1.700	0.059	0.067
E1	2.650	2.950	0.104	0.116
e	0.950(BSC) <sup>(2)</sup>		0.037(BSC) <sup>(2)</sup>	
e1	1.800	2.000	0.071	0.079
L	0.300	0.600	0.012	0.024
	0°	8°	0°	8°

NOTE:

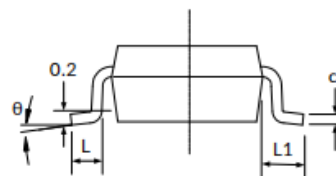
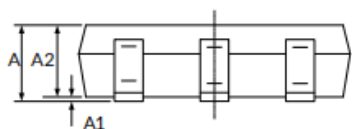
1. Plastic or metal protrusions of 0.15mm maximum per side are not included.
2. BSC (Basic Spacing between Centers), "Basic" spacing is nominal.
3. This drawing is subject to change without notice.



SC70-5<sup>(3)</sup>



RECOMMENDED LAND PATTERN (Unit: mm)



Symbol	Dimensions In Millimeters		Dimensions In Inches	
	Min	Max	Min	Max
A <sup>(1)</sup>	0.900	1.100	0.035	0.043
A1	0.000	0.100	0.000	0.004
A2	0.900	1.000	0.035	0.039
b	0.150	0.350	0.006	0.014
c	0.080	0.150	0.003	0.006
D <sup>(1)</sup>	2.000	2.200	0.079	0.087
E <sup>(1)</sup>	1.150	1.350	0.045	0.053
E1	2.150	2.450	0.085	0.096
e	0.650(BSC) <sup>(2)</sup>		0.026(BSC) <sup>(2)</sup>	
e1	1.300(BSC) <sup>(2)</sup>		0.051(BSC) <sup>(2)</sup>	
L	0.260	0.460	0.010	0.018
L1	0.525		0.021	
	0°	8°	0°	8°

NOTE:

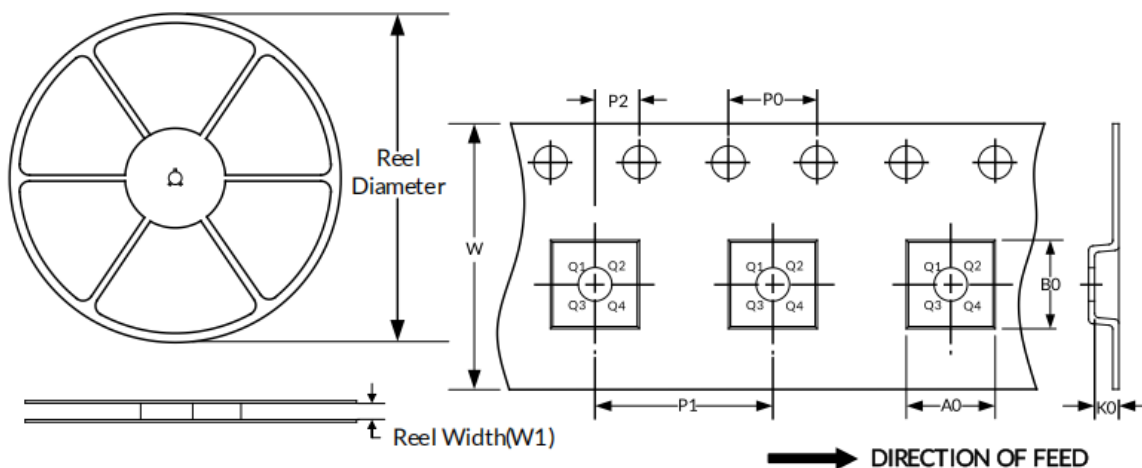
1. Plastic or metal protrusions of 0.15mm maximum per side are not included.
2. BSC (Basic Spacing between Centers), "Basic" spacing is nominal.
3. This drawing is subject to change without notice.



TAPE AND REEL INFORMATION

REEL DIMENSIONS

TAPE DIMENSION



NOTE: The picture is only for reference. Please make the object as the standard.

KEY PARAMETER LIST OF TAPE AND REEL

Package Type	Reel Diameter	Reel Width(mm)	A0 (mm)	B0 (mm)	K0 (mm)	P0 (mm)	P1 (mm)	P2 (mm)	W (mm)	Pin1 Quadrant
SC70-5	7''	9.5	2.25	2.55	1.20	4.0	4.0	2.0	8.0	Q3
SOT23-5	7''	9.5	3.20	3.20	1.40	4.0	4.0	2.0	8.0	Q3

NOTE:

1. All dimensions are nominal.
2. Plastic or metal protrusions of 0.15mm maximum per side are not included.