

SPECIFICATIONS

ELECTRICAL

RESISTANCE RANGE ----- 10 TO 20K OHMS
 RESISTANCE TOLERANCE ----- ±5%
 LINEARITY(INDEPENDENT) ----- ± 0.5%
 ELECTRICAL ANGLE ----- 320° ±5°
 END RESISTANCE ----- 1 OHM OR 0.2%
 ELECTRICAL NOISE(ENR) ----- 100 OHMS MAX.
 RESOLUTION ----- SEE CHART
 INSULATION RESISTANCE ----- 1000 MEGOHMS AT 1000 VDC
 DIELECTRIC STRENGTH ----- 1000 VAC MIN.
 POWER RATING ----- 0.5 WATTS

MECHANICAL

NO OF TURNS ----- 1
 MECHANICAL ANGLE ----- 320 ±5°
 ROTATIONAL LIFE ----- 500,000 TURNS
 STOP STRENGTH ----- 125 OZ IN.
 STARTING TORQUE ----- .70 OZ IN.
 WEIGHT ----- 1.1 OZ.
 SHAFT RADIAL PLAY ----- .003 T.I.R.
 SHAFT END PLAY ----- .005 T.I.R.

ENVIRONMENTAL

OPERATING TEMPERATURE ----- -55°C TO +105°C
 TEMPERATURE COEFFICIENT ----- SEE CHART
 VIBRATION ----- 10HZ TO 2000HZ 15G
 SHOCK ----- 50G 11MS
 MOISTURE RESISTANCE ----- 40°C 95%RH 240 HOURS

MATERIALS

HOUSING ----- METAL
 SHAFT ----- STAINLESS STEEL
 BUSHING ----- PLATED BRASS
 TERMINALS ----- GOLD PLATED
 RESISTANCE ELEMENT ----- WIREWOUND

OPTIONAL FEATURES

SHAFT MODIFICATIONS
 REAR SHAFT
 SPECIAL ANGLES
 CENTER TAP

NOTES:

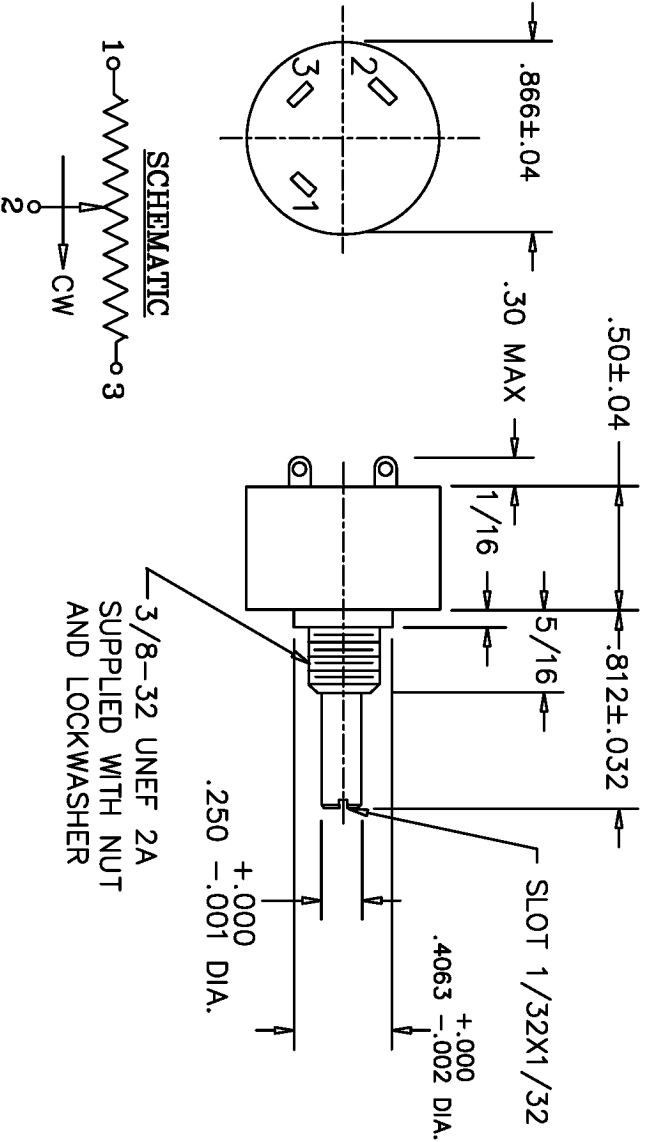
WIREWOUND RESISTANCE ELEMENT

TOLERANCES

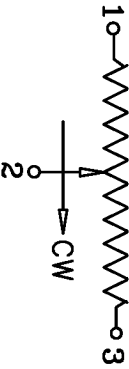
XX = .010 FRACTIONS = ?/64
 XXX = ±.005 ANGLES = ±1/2°

ALL SPECIFICATIONS SUBJECT TO CHANGE WITHOUT NOTICE.

REV.	BY	DATE	PART NO.
B	BT	10-17	SW22D
C	GC	1-9-01	REVISED
D	BT	5-4-01	RESIST. TOL CHANGE
			REVISION 'C' CANCELLED



SCHEMATIC

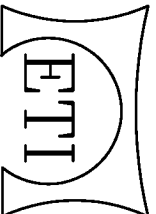


RESISTANCE	RESOLUTION	TEMPERATURE COEFFICIENT PPM/°C
10	.333	700
20	.270	700
50	.333	80
100	.270	80
200	.213	80
500	.222	20
1K	.175	20
2K	.135	20
5K	.100	20
10K	.079	20
20K	.060	20

THIS DOCUMENT CONTAINS PROPRIETARY DATA OF POLARIS INDUSTRIAL ENTERPRISES, INC. NO DISCLOSURE, REPRODUCTION, OR USE OF ANY PART THERE OF MAY BE MADE EXCEPT BY WRITTEN PERMISSION.

TITLE

SINGLE TURN POTENTIOMETER



CARLSBAD CALIFORNIA

PART NO.

SW22D

Mouser Electronics

Authorized Distributor

Click to View Pricing, Inventory, Delivery & Lifecycle Information:

[ETI Systems:](#)

[SW22D-50K](#) [SW22D-5K](#) [SW22D-FL-10K](#)