

MOS FET Relays G3VM-101PR

Smallest 100V MOS FET Relay In The Market (USOP Package Size)

- Dielectric strength of 500 Vrms between I/O.
- RoHS compliant.

Application Examples

- Semiconductor test equipment
- Test & Measurement devices and Data loggers
- Communication equipment



NEW

Note: The actual product is marked differently from the image shown here.

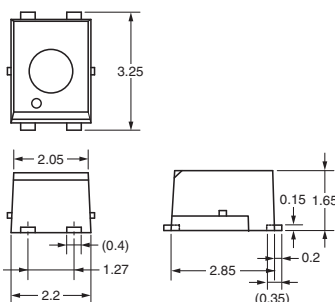
List of Models

Package type	Contact form	Terminals	Load voltage (peak value)	Model	Number per tape
USOP4	SPST-NO (1FormA)	Surface-mounting terminals	100 VAC or VDC	G3VM-101PR	---
				G3VM-101PR(TR05)	500

Dimensions

Note: All units are in millimeters unless otherwise indicated.

G3VM-101PR

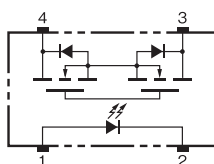


Note: The actual product is marked differently from the image shown here.

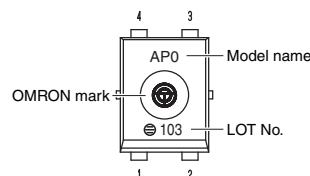
Weight: 0.03 g

Terminal Arrangement/Internal Connections (Top View)

G3VM-101PR

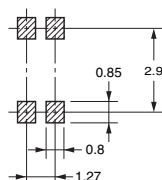


Note: The actual product is marked differently from the image shown here.



Actual Mounting Pad Dimensions (Recommended Value, Top View)

G3VM-101PR



■ Absolute Maximum Ratings (Ta = 25°C)

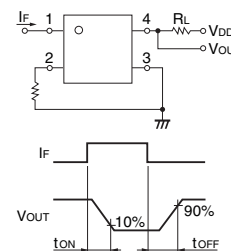
Item		Symbol	Rating	Unit	Measurement Conditions
Input	LED forward current	I_F	50	mA	
	LED forward current reduction rate	$\Delta I_F/^\circ\text{C}$	-0.5	mA/°C	$T_a \geq 25^\circ\text{C}$
	LED reverse voltage	V_R	5	V	
	Connection temperature	T_j	125	°C	
Output	Load voltage (AC peak/DC)	V_{OFF}	100	V	
	Continuous load current	I_O	100	mA	
	ON current reduction rate	$\Delta I_{ON}/^\circ\text{C}$	-1	mA/°C	$T_a \geq 25^\circ\text{C}$
	Pulse ON current	I_{OP}	300	mA	$t=100\text{ms}$, Duty=1/10
	Connection temperature	T_j	125	°C	
Dielectric strength between input and output (See note 1.)		V_{I-O}	500	V_{rms}	AC for 1 min
Ambient operating temperature		T_a	-40 to +85	°C	With no icing or condensation
Ambient storage temperature		T_{stg}	-40 to +125	°C	With no icing or condensation
Soldering temperature		---	260	°C	10 s

Note: 1. The dielectric strength between the input and output was checked by applying voltage between all pins as a group on the LED side and all pins as a group on the light-receiving side.

■ Electrical Characteristics (Ta = 25°C)

Item		Symbol	Minimum	Typical	Maximum	Unit	Measurement conditions
Input	LED forward voltage	V_F	1.0	1.15	1.3	V	$I_F = 10 \text{ mA}$
	Reverse current	I_R	---	---	10	μA	$V_R = 5 \text{ V}$
	Capacity between terminals	C_T	---	15	---	pF	$V = 0$, $f = 1 \text{ MHz}$
	Trigger LED forward current	I_{FT}	---	0.5	3	mA	$I_O = 100 \text{ mA}$
Output	Maximum resistance with output ON	R_{ON}	---	8	14	Ω	$I_F = 5 \text{ mA}$, $I_O = 100 \text{ mA}$ $t < 1 \text{ s}$
	Current leakage when the relay is open	I_{LEAK}	---	---	200	pA	$V_{OFF} = 100 \text{ V}$
	Capacity between terminals	C_{OFF}	---	6	8	pF	$V = 0$, $f = 100 \text{ MHz}$, $t < 1 \text{ s}$
Capacity between I/O terminals		C_{I-O}	---	0.4	---	pF	$f = 1 \text{ MHz}$, $V_s = 0 \text{ V}$
Insulation resistance between I/O terminals		R_{I-O}	1,000	---	---	$M\Omega$	$V_{I-O} = 500 \text{ VDC}$, $R_{OH} \leq 60\%$
Turn-ON time		t_{ON}	---	0.12	0.3	ms	$I_F = 5 \text{ mA}$, $R_L = 200 \Omega$, $V_{DD} = 20 \text{ V}$ (See note 2.)
Turn-OFF time		t_{OFF}	---	0.18	0.3	ms	

Note: 2. Turn-ON and Turn-OFF Times



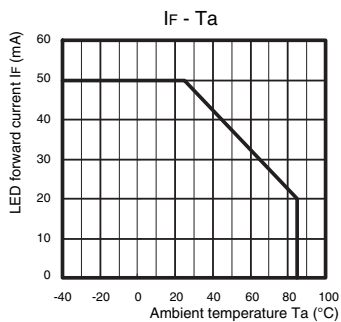
■ Recommended Operating Conditions

Use the G3VM under the following conditions so that the Relay will operate properly.

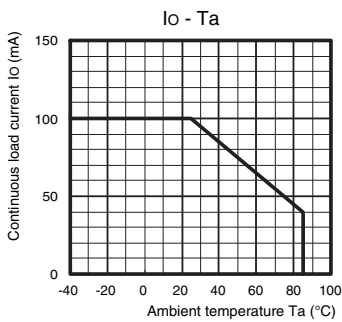
Item	Symbol	Minimum	Typical	Maximum	Unit
Load voltage (AC peak/DC)	V_{DD}	---	---	80	V
Operating LED forward current	I_F	5	7.5	20	mA
Continuous load current (AC peak/DC)	I_O	---	---	100	mA
Operating temperature	T_a	-20	---	65	°C

■ Engineering Data

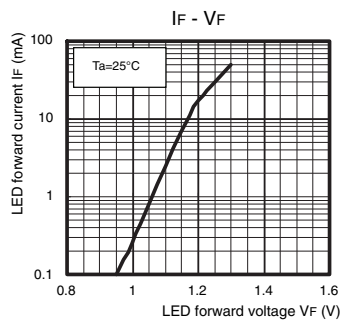
LED forward current vs. Ambient temperature



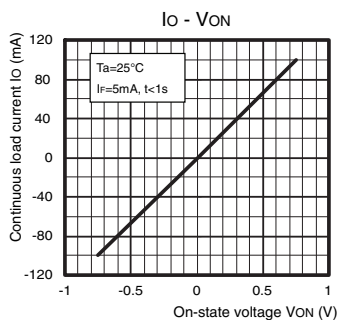
Continuous load current vs. Ambient temperature



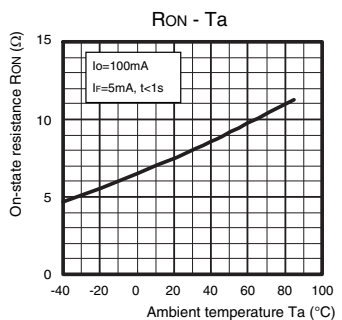
LED forward current vs. LED forward voltage



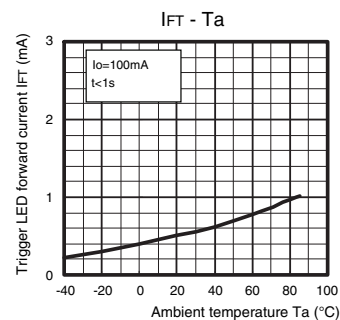
Continuous load current vs. On-state voltage



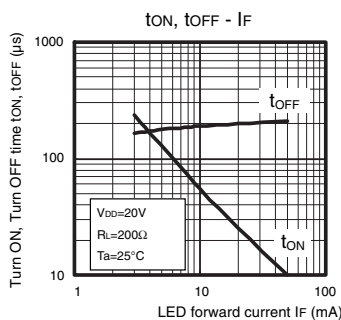
On-state resistance vs. Ambient temperature



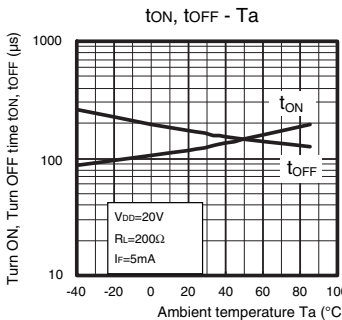
Trigger LED forward current vs. Ambient temperature



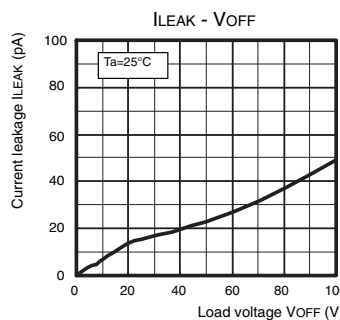
Turn ON, Turn OFF time vs. LED forward current



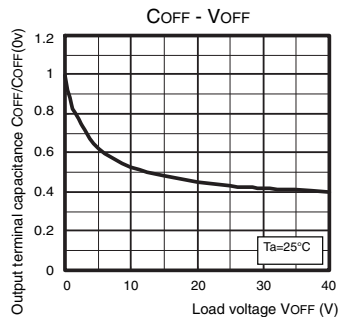
Turn ON, Turn OFF time vs. Ambient temperature



Current leakage vs. Load voltage



Output terminal capacitance COFF/COFF(0v) vs. Load voltage



All sales are subject to Omron Electronic Components LLC standard terms and conditions of sale, which can be found at http://www.components.omron.com/components/web/webfiles.nsf/sales_terms.html

ALL DIMENSIONS SHOWN ARE IN MILLIMETERS.
To convert millimeters into inches, multiply by 0.03937. To convert grams into ounces, multiply by 0.03527.

OMRON[®]
**OMRON ELECTRONIC
COMPONENTS LLC**
847-882-2288

OMRON ON-LINE

Global - <http://www.omron.com>
USA - <http://www.components.omron.com>

Cat. No. K219-E-01

03/14

Specifications subject to change without notice

Printed in USA

Mouser Electronics

Authorized Distributor

Click to View Pricing, Inventory, Delivery & Lifecycle Information:

[Omron:](#)

[G3VM-101PR\(TR05\)](#)