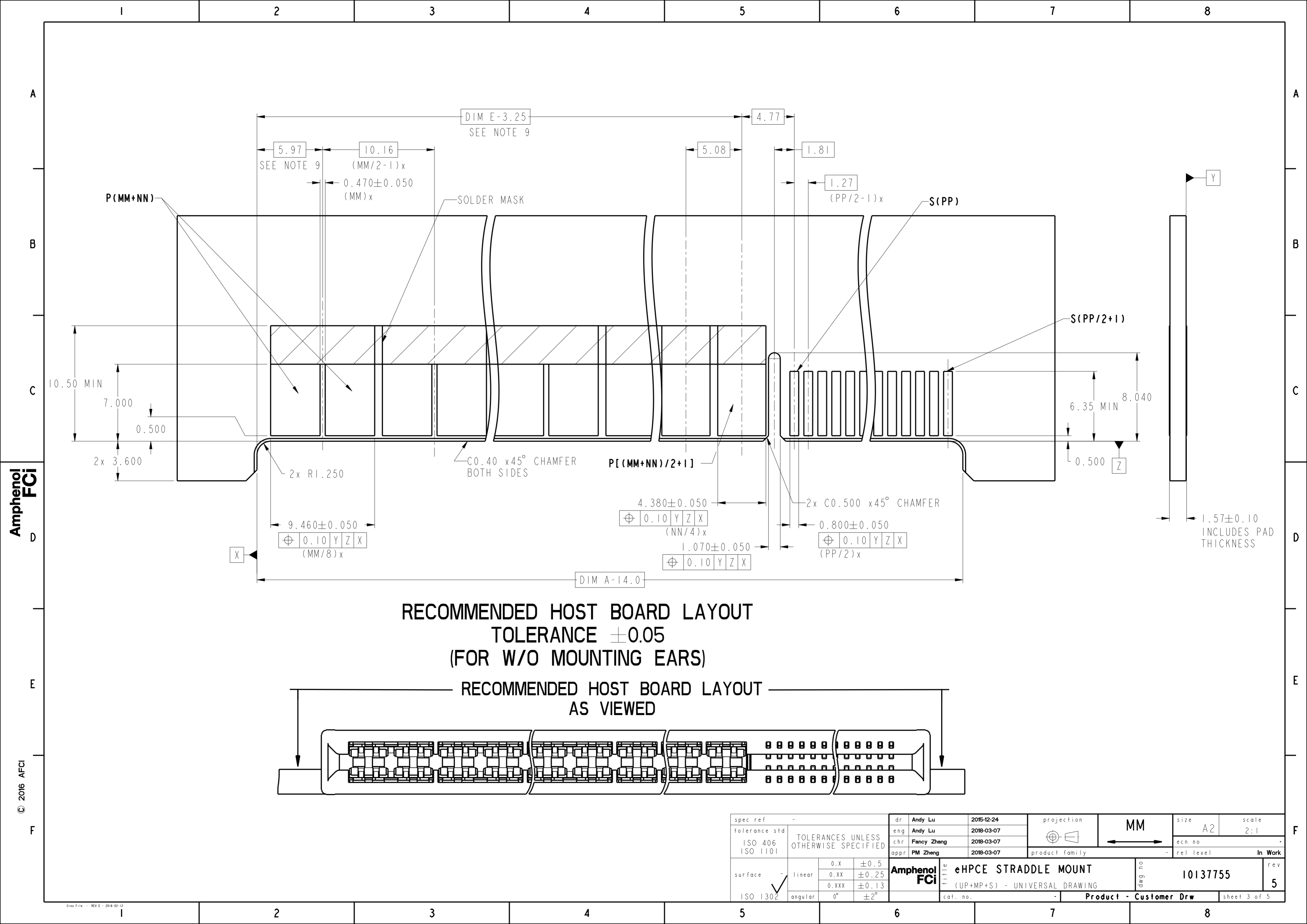


spec ref	-	dr	Andy Lu	2015-12-24	projection	MM	size	A2	scale	4:1
tolerance std	ISO 406 ISO 1101	eng	Andy Lu	2018-03-07			ecn no	-	rel level	In Work
TOLERANCES UNLESS OTHERWISE SPECIFIED		chr	Fancy Zhang	2018-03-07						
surface	ISO 1302	appr	PM Zheng	2018-03-07	product family	CARD EDGE	rel level			
	linear	0.X	±0.5	<b>Amphenol FCI</b> title eHPCE STRADDLE MOUNT (UP+MP+S) - UNIVERSAL DRAWING cat. no. -	product family CARD EDGE rel level In Work	size A2 scale 4:1 ecn no - rel level In Work	title eHPCE STRADDLE MOUNT (UP+MP+S) - UNIVERSAL DRAWING cat. no. -	dwg no 10137755	rev 5	sheet 1 of 5
	linear	0.XX	±0.25							
	linear	0.XXX	±0.13							
	angular	0°	±2°	Product - Customer Drw						

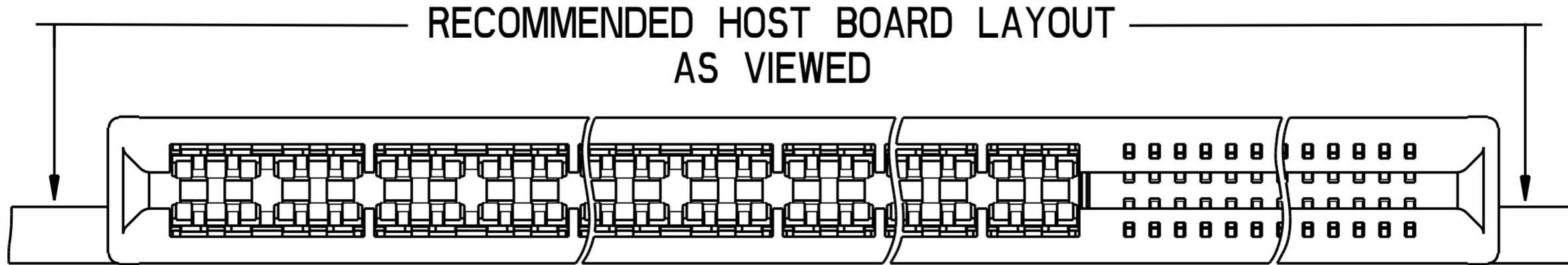
Amphenol FCI

© 2016 AFCI





**RECOMMENDED HOST BOARD LAYOUT**  
**TOLERANCE ±0.05**  
**(FOR W/O MOUNTING EARS)**



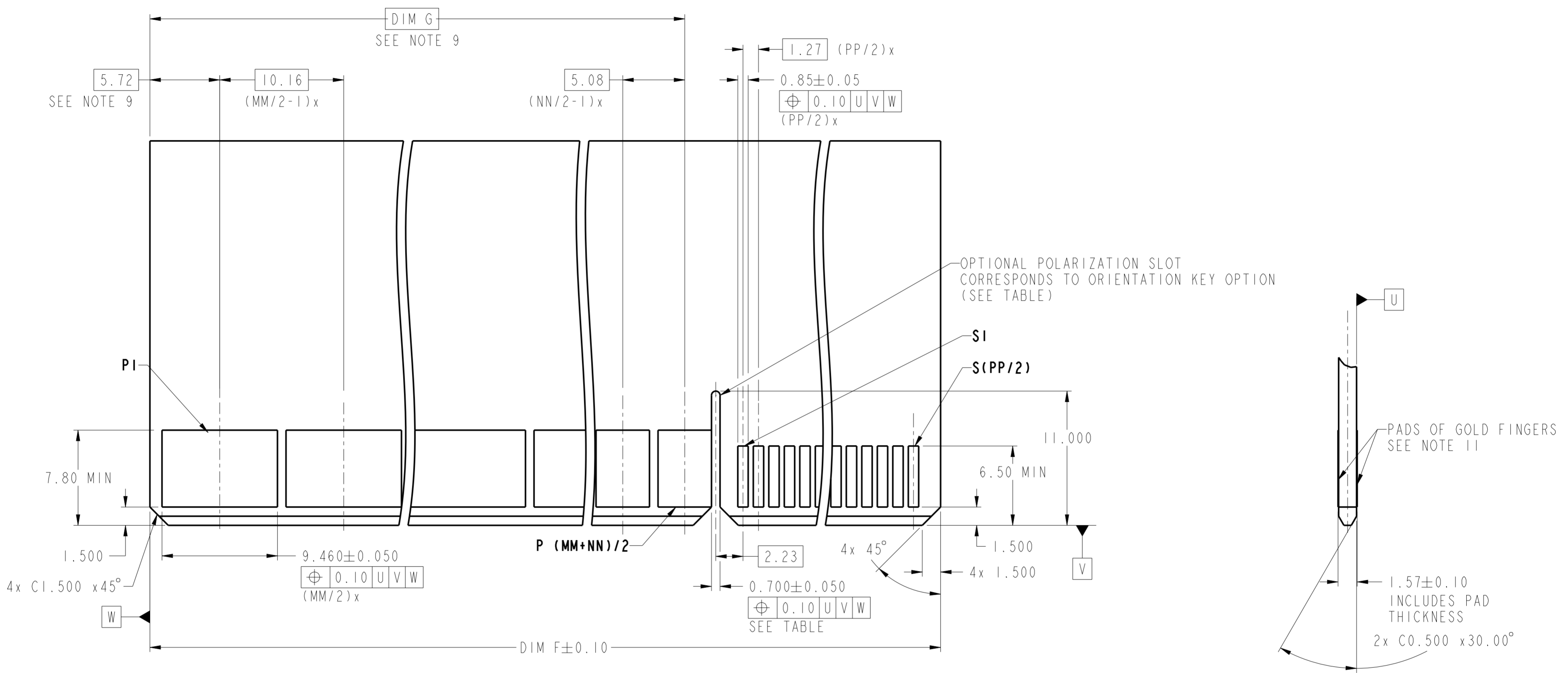
spec ref	-	dr	Andy Lu	2015-12-24	projection	MM	size	A2	scale	2:1
tolerance std	ISO 406 ISO 1101	eng	Andy Lu	2018-03-07			ecn no	-	rel level	In Work
TOLERANCES UNLESS OTHERWISE SPECIFIED		chr	Fancy Zhang	2018-03-07						
surface	ISO 1302	appr	PM Zheng	2018-03-07	product family	-	rel level	-	dwg no	10137755
linear	0.X ±0.5 0.XX ±0.25 0.XXX ±0.13	Amphenol FCI		eHPCE STRADDLE MOUNT (UP+MP+S) - UNIVERSAL DRAWING		cat. no.	Product - Customer Drw	rev	5	sheet 3 of 5
angular	0° ±2°									

Amphenol FCI

© 2016 APCI

1 2 3 4 5 6 7 8

A  
B  
C  
D  
E  
F



RECOMMENDED MATING BOARD LAYOUT  
TOLERANCE ±0.05

spec ref	-	dr	Andy Lu	2015-12-24	projection	MM	size	A2	scale	1:1	
tolerance std	ISO 406 ISO 1101	eng	Andy Lu	2018-03-07			ecn no	-	In Work		
TOLERANCES UNLESS OTHERWISE SPECIFIED		chr	Fancy Zhang	2018-03-07			rel level	-			
surface	ISO 1302	appr	PM Zheng	2018-03-07	product family	-	rel level	-	In Work		
linear	0.X ±0.5 0.XX ±0.25 0.XXX ±0.13	Amphenol FCI		title		eHPCE STRADDLE MOUNT (UP+MP+S) - UNIVERSAL DRAWING		dwg no	10137755	rev	5
angular	0° ±2°			cat. no.		Product - Customer Drw		sheet 4 of 5			

Amphenol FCI

© 2016 APCI

1 2 3 4 5 6 7 8

10137755 - MM NN PP LF

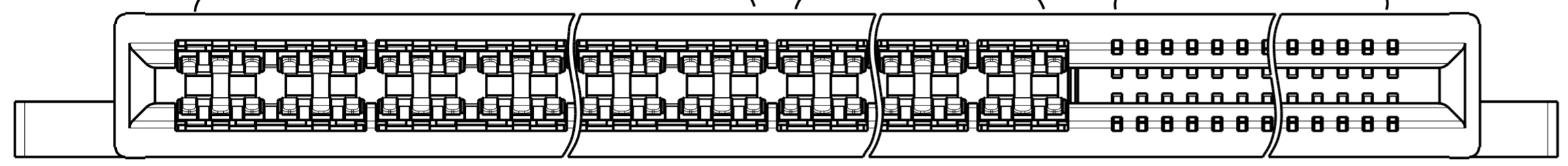
LEAD FREE

	A	B	C	D	E	F	G	H
MOUNTING EARS	Y	Y	Y	N	N	N	Y	N
POLARIZATION KEY	Y	N	N	Y	N	N	Y	Y
REAR GUIDE	Y	Y	N	Y	Y	N	N	N

ULTRA PWR CONTACT QTY  
(NEXT TO LEFT END)

MIDDLE PWR CONTACT QTY  
(NEXT TO SIGNAL)

SIGNAL CONTACT QTY



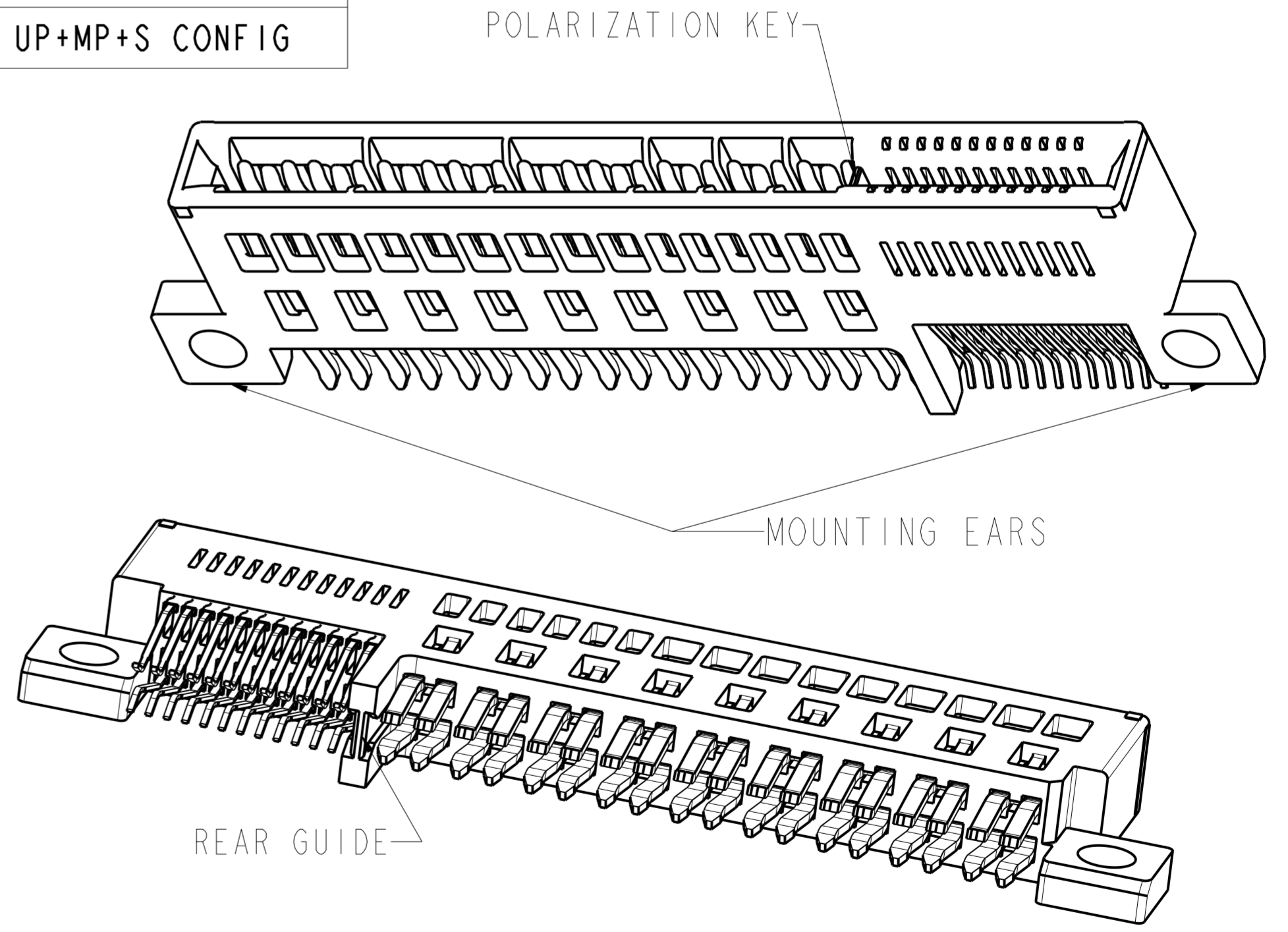
Example: The configuration above is 10137755-060624ALF  
STRADDLE MOUNT WITH ENHANCED WALLS 6UP6MP24S WITH MOUNTING EARS,  
POLARIZATION KEY AND ALIGNMENT KEY.

6UP means 6 pcs ultra power contacts with 6 beams; 24S means 24 pcs signal contacts;  
6MP means 6 pcs middle power contacts with 3 beams.

TABLE: PART NUMBER CODE FOR eHPCE STRADDLE MOUNT WITH ENHANCED WALL UP+MP+S CONFIG

NOTES:

- CONNECTOR MATERIALS:  
HOUSING: HIGH TEMPERATURE THERMAL PLASTIC, BLACK, LOW HALOGEN, UL 94V-0  
CONTACTS: HIGH PERFORMANCE COPPER ALLOY.
- CONTACT FINISH REF. SECTION 5.2 IN PRODUCT SPECIFICATION.
- PRODUCT SPECIFICATION: GS-12-1362.
- APPLICATION SPECIFICATION: GS-20-0469.
- PRODUCT MARKING (PART NUMBER & DATE CODE) ON HOUSING IN AREA SHOWN.
- PACKAGING MEETS SPECIFICATION GS-14-2532(POCKET TRAY).
- HOUSING COMPONENT WILL WITHSTAND EXPOSURE TO 260°C PEAK TEMPERATURE FOR 10 SECONDS IN A CONVECTION, INFRA-RED, OR VAPOR PHASE REFLOW OVEN.
- MAXIMUM OVERALL LENGTH IS 100mm.
- DIM IS NOT APPLICABLE IF THERE ISN'T 3 BEAMS CONTACT.
- THIS PRODUCT MEETS EUROPEAN UNION DERECTIVES AND OTHER COUNTRY REGULATIONS AS DESCRIBED IN GS-47-0004.
- PLATING OF PADS SHALL BE 30u" GOLD MINIMUM OVER 50u" NICKEL MINIMUM. SURFACE MUST BE FREE OF FOREIGN MATTER.



DIM	TABLE 2. LENGTH FORMULAS
DIM A ⑧	$(MM/2)*10.16 + (NN/2) \times 5.08 + (PP/2) \times 1.27 + 17.20$
DIM B	DIM A - 13.08
DIM C	DIM A - 7.50
DIM D	DIM A - 8.98
DIM E ⑨	$(MM/2 - 1) \times 10.16 + (NN/2 - 1) \times 5.08 + 16.84$ (WITH UP CONTACT) $(NN/2 - 1) \times 5.08 + 6.68$ (WITHOUT UP CONTACT)
DIM F	DIM A - 13.38
DIM G ⑨	$(MM/2 - 1) \times 10.16 + (NN/2 - 1) \times 5.08 + 13.34$ (WITH UP CONTACT) $(NN/2 - 1) \times 5.08 + 3.18$ (WITHOUT UP CONTACT)

spec ref	-	dr	Andy Lu	2015-12-24	projection	MM	size	A2	scale	4:1
tolerance std	ISO 406 ISO 1101	eng	Andy Lu	2018-03-07		CARD EDGE	ecn no	-	rel level	In Work
surface	linear ISO 1302	chr	Fancy Zhang	2018-03-07			product family	eHPCE STRADDLE MOUNT		
	angular	appr	PM Zheng	2018-03-07			rev	5		sheet 5 of 5

Amphenol FCI

© 2016 AFCI

# Mouser Electronics

Authorized Distributor

Click to View Pricing, Inventory, Delivery & Lifecycle Information:

## Amphenol:

[10137755-080224BLF](#)

## FCI / Amphenol:

[10137755-080224FLF](#) [10137755-000420DLF](#) [10137755-000408ALF](#) [10137755-080224CLF](#) [10137755-000408DLF](#)

[10137755-080224ELF](#) [10137755-080216ALF](#) [10137755-080216ELF](#) [10137755-002016CLF](#) [10137755-001420ALF](#)

[10137755-001416BLF](#) [10137755-001816BLF](#)