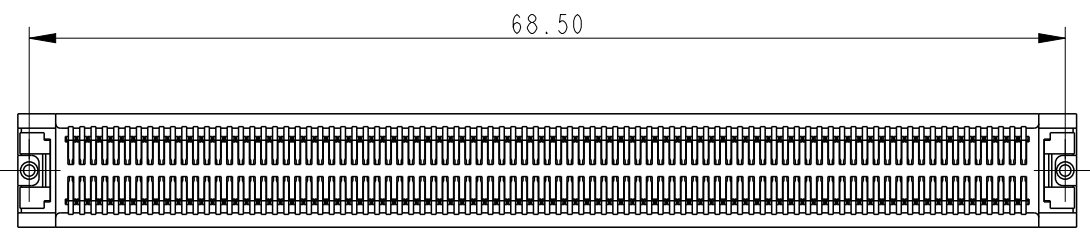
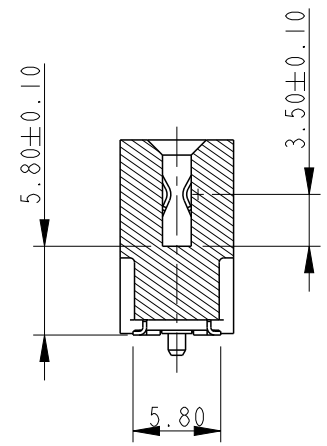
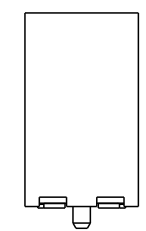
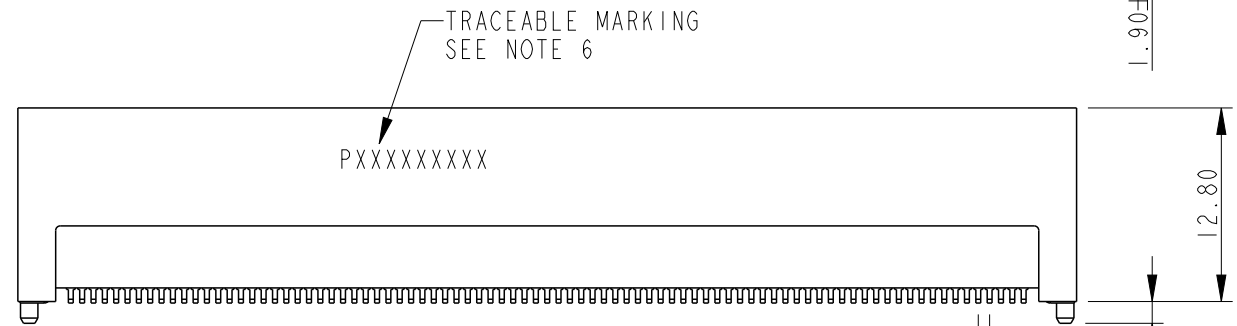
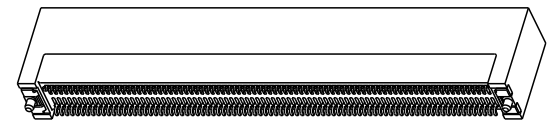
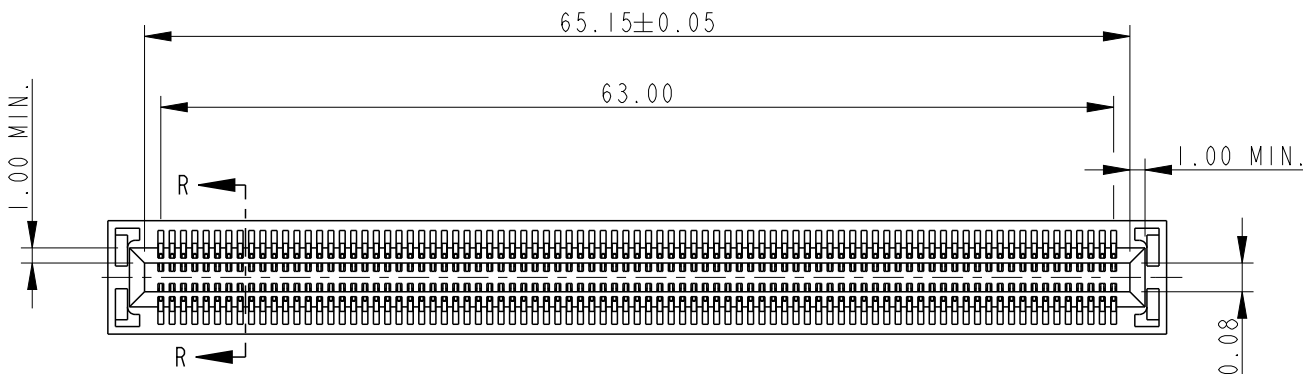


PART NUMBER 10058835-1000LF



spec ref	*	dr	w wcadmin	2006/08/30	projection	MM	size	A4	scale	1:1																								
tolerance std	TOLERANCES UNLESS OTHERWISE SPECIFIED	eng	Wei Yang	2014/08/27				ecn no	ELX-DG-18450-1																									
ASME Y14.5		chr	Terry Qiu	2014/09/17		product family		rel level	Released																									
surface	<table border="1"> <tr> <td>linear</td> <td>0.X</td> <td>±0.3</td> </tr> <tr> <td></td> <td>0.XX</td> <td>±0.20</td> </tr> <tr> <td></td> <td>0.XXX</td> <td>±0.100</td> </tr> <tr> <td>angular</td> <td>0°</td> <td>±2°</td> </tr> </table>	linear	0.X	±0.3		0.XX	±0.20		0.XXX	±0.100	angular	0°	±2°	appr	Pei-Ming Zheng	2014/09/19		<table border="1"> <tr> <td>title</td> <td>SMT TYPE ASS'Y</td> <td>dwg no</td> <td>10058835</td> <td>rev</td> <td>H</td> </tr> <tr> <td></td> <td>MICRO TCA</td> <td></td> <td></td> <td></td> <td></td> </tr> </table>	title	SMT TYPE ASS'Y	dwg no	10058835	rev	H		MICRO TCA					Product - Customer Drw		sheet 1 of 6	
linear	0.X	±0.3																																
	0.XX	±0.20																																
	0.XXX	±0.100																																
angular	0°	±2°																																
title	SMT TYPE ASS'Y	dwg no	10058835	rev	H																													
	MICRO TCA																																	
ASME Y14.5		www.fci.com	cat. no.	*																														

PrdE File - REV C - 2009-06-09

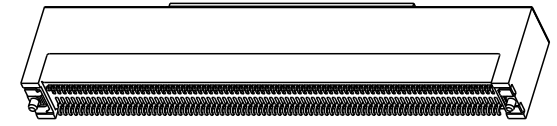
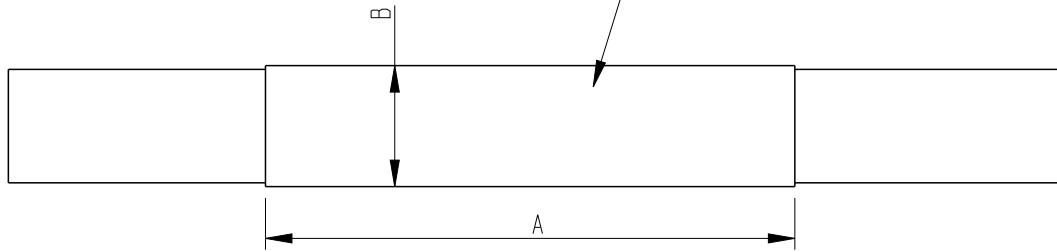


Copyright FCI.

PART NUMBER
10058835-1001LF
10058835-1003LF



MYLAR FOR PLACE AND PICK
THICKNESS 0.12MM

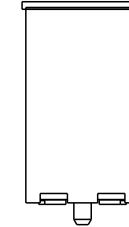
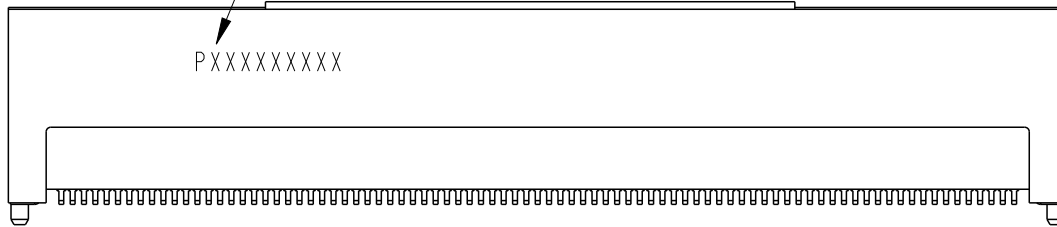


TRACEABLE MARKING
SEE NOTE 6



PART NUMBER	DIM "A"±0.5	DIM "B"±0.3
10058835-1001LF	35	8.0
10058835-1003LF	22	7.0

PXXXXXXXXX



NOTE: ALL THE CONNECTOR DIMENSIONS REFER TO PART NUMBER 10058835-1000LF

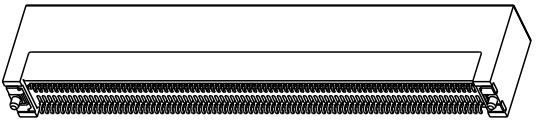
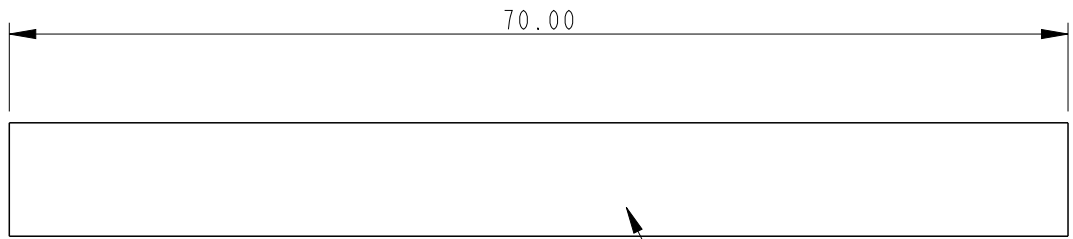
spec ref	*	dr	w wadmin	2006/08/30	projection	MM	size	A4	scale	1:1	
tolerance std	TOLERANCES UNLESS OTHERWISE SPECIFIED	eng	Wei Yang	2014/08/27			ecn no	ELX-DG-18450-1			
ASME Y14.5		chr	Terry Qiu	2014/09/17				rel level	Released		
-		appr	Pei-Ming Zheng	2014/09/19	product family	dwg no	10058835		rev	H	
surface	linear	0.X	±0.3		title	SMT TYPE ASS'Y			cat. no.	* Product - Customer Drw	sheet 2 of 6
ASME Y14.5		0.XX	±0.20								
	0.XXX	±0.100									
	angular	0°	±2°	www.fci.com							

Print File - REV C - 2009-06-09

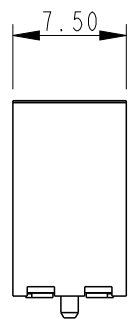
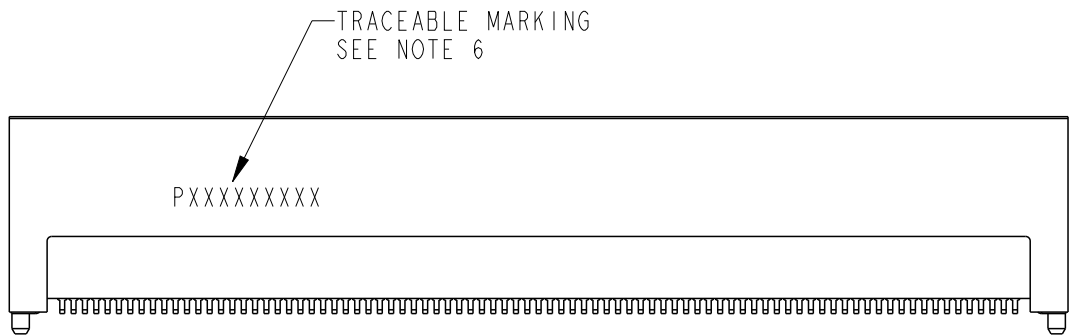


Copyright FCI.

PART NUMBER 10058835-1002LF



MYLAR FOR PLACE AND PICK THICKNESS 0.12MM



NOTE: ALL THE CONNECTOR DIMENSIONS REFER TO PART NUMBER 10058835-1000LF

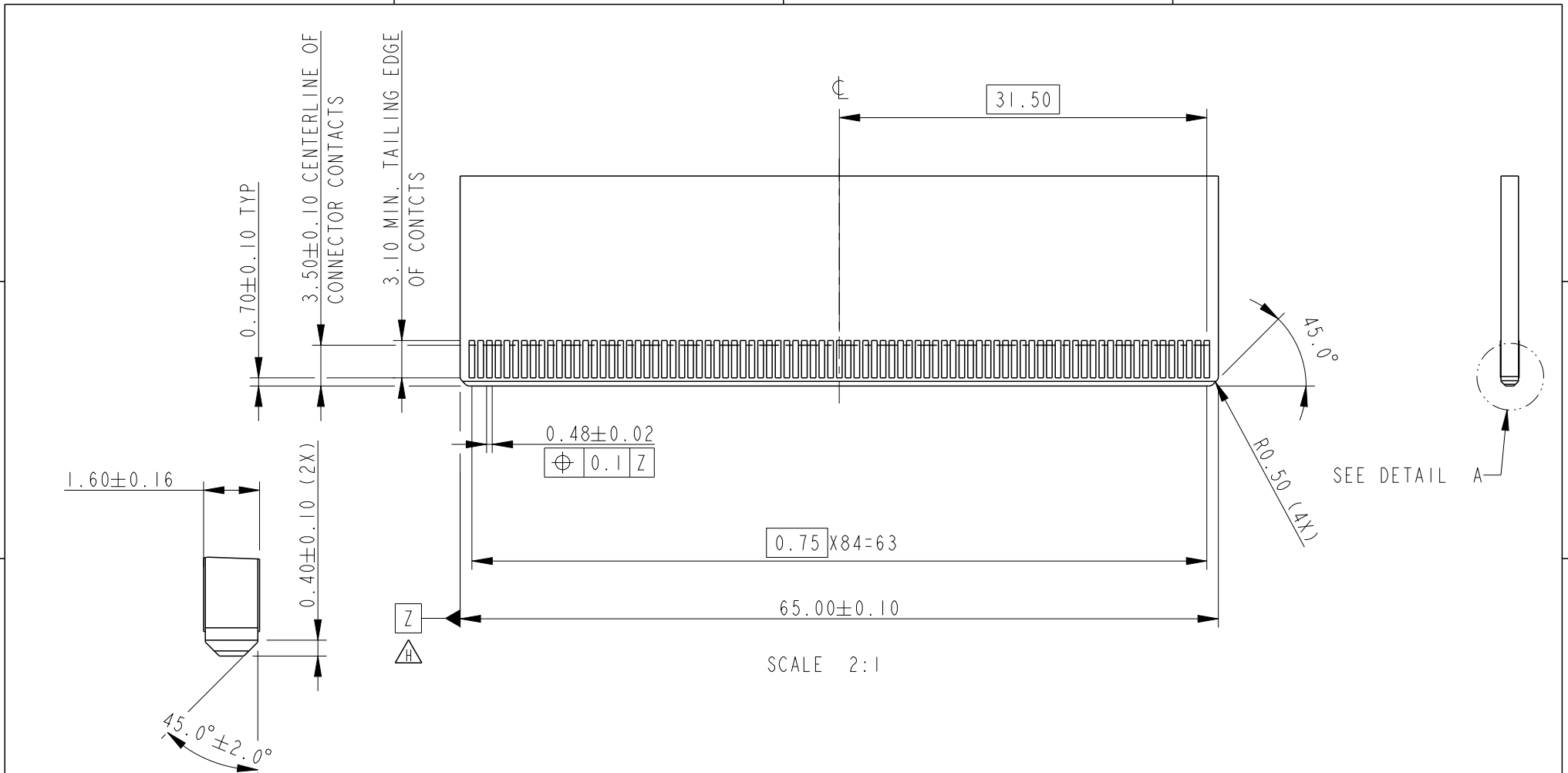


spec ref *		dr w wcadmin		2006/08/30		projection		size A4		scale 1:1	
tolerance std ASME Y14.5		TOLERANCES UNLESS OTHERWISE SPECIFIED		eng Wei Yang		2014/08/27		MM		ecn no ELX-DG-18450-1	
				chr Terry Qiu		2014/09/17		←→		rel level Released	
				appr Pei-Ming Zheng		2014/09/19		product family		rev H	
surface ✓		linear		FCI		title SMT TYPE ASS'Y		dwg no 10058835			
ASME Y14.5		angular		www.fci.com		cat. no. *		Product - Customer Drw		sheet 3 of 6	
		0.X ±0.3									
		0.XX ±0.20									
		0.XXX ±0.100									
		0° ±2°									

Print File - REV C - 2009-06-09



Copyright FCI.



DETAIL A
SCALE 6:1

RECOMMENDED MODULE LAYOUT
(SEE PICMG ADVANCED MEZZANINE CRAD BASE SPECIFICATION FOR DETAIL)

spec ref	*	dr	w wcadmin	2006/08/30	projection	MM ←→	size	A4	scale	1:1	
tolerance std	TOLERANCES UNLESS OTHERWISE SPECIFIED	eng	Wei Yang	2014/08/27			ecn no	ELX-DG-18450-1			
ASME Y14.5		chr	Terry Qiu	2014/09/17				product family	3GIO		
-		appr	Pei-Ming Zheng	2014/09/19		rel level			Released		
surface	✓	linear	0.X	±0.3		title	SMT TYPE ASS'Y	dwg no	10058835	rev	H
ASME Y14.5			0.XX	±0.20							
		angular	0°	±2°	www.fci.com	cat. no.	*	Product - Customer Drw	sheet 5 of 6		

Print File - REV C - 2009-06-09

NOTES:

1. MATERIAL:

HOUSING: HIGH TEMPERATURE, GLASS FILLED UL94V-0 RATED.

TERMINAL: COPPER ALLOY

PLATING: 1.27um NICKEL UNDERPLATE ALL OVER

CONTACT AREA PLATING - SEE PRODUCT NUMBER CODE

SOLDER TAIL: MAT TIN - 2.54um MIN.

SEE PRODUCT NUMBER CODE

2. PRODUCT SPECIFICATION: GS-12-362

3. PACKING SPECIFICATION: GS-14-1047

4. RoHS COMPATIBLE PRODUCT SPECIFICATIONS

a-PLATING:

- "LF" MEANS THE PRODUCT IS LEAD-FREE, 2um MINIMUM MATTE TIN OVER 1.27um MINIMUM NICKEL UNDERPLATE.

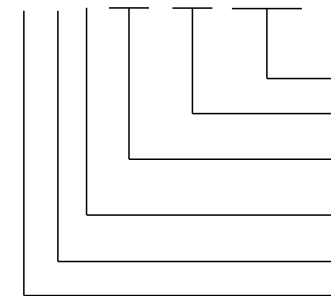
b-MANUFACTURING PROCESS COMPATIBILITY

- THE HOUSING WILL WITHSTAND EXPOSURE TO 260°C±5°C SOLDER BATH TEMPERATURE FOR 5 SECONDS IN A REFLOW SOLDER APPLICATION WITH A 1.6mm MIN THICK CIRCUIT BOARD.

△ 5. A △ SYMBOL WILL BE NEXT TO ANY DIMENSION, VIEW, OR NOTE WHICH HAS BEEN MODIFIED WITH THE CURRENT DRAWING REVISION.

6. MARKING INFORMATION:

P X X X X X X X X



PRODUCTION LINE CODE

DATE CODE THROUGH 01 TO 31

WEEK NUMBER 01 THROUGH 53

YEAR CODE:
MOST RIGHT OF DIGIT OF PRODUCTION.
(e.g 2007=7)

MANUFACTURE SITE; 2 FOR DONGGUAN

SOURCE, P FOR CHINA

HEIGHT OF THE MAKING TEXT: IMM MIN

PRODUCT NUMBER CODE
10058835 - X X X X L F

HOUSING COLOR OPTIONS
1-BLACK
2-WHITE

PEGS OPTIONS
0-PLASTIC PEGS

TERMINAL PLATING OPTIONS
0-0.76um Au CONTACT AREA

LEAD FREE

RESERVE

- 0-----WITHOUT MYLAR
- 1-----WITH MYLAR(35X8.0)
- 2-----WITH MYLAR(70X7.5)
- △ 3-----WITH MYLAR(22X7.0)

spec ref *		dr w cadmin		2006/08/30		projection		size A4		scale 1:1	
tolerance std		eng Wei Yang		2014/08/27						ecn no ELX-DG-18450-1	
ASME Y14.5		chr Terry Qiu		2014/09/17						rel level Released	
-		appr Pei-Ming Zheng		2014/09/19		product family 3G10					
surface ✓		linear				title SMT TYPE ASS'Y		dwg no 10058835		rev H	
		0.X ±0.3		www.fci.com		cat. no. *		Product - Customer Drw		sheet 6 of 6	
		0.XX ±0.20									
		0.XXX ±0.100									
ASME Y14.5		angular 0° ±2°									