



AOS
SEMICONDUCTOR

产品规格说明书

Product Data Sheet

LM2596HVS-5.0

WEB | www.aossemi.cn 



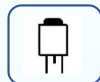
电源管理IC



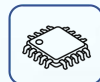
通信接口芯片



二三极管



LDO稳压器



逻辑器件



MOSFETs



运算放大器



显示驱动



MCU单片机

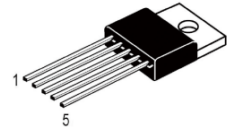


光电器件

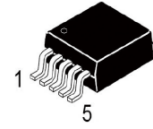
LM2596HVT-5.0

Data Sheet

DC-DC Power Chip



TO220T-5L



TO263-5L

General Description

The LM2596HV series of regulators are monolithic integrated circuit that provides all the active functions for a step-down (buck) switching regulator, capable of driving 3A load with excellent line and load regulation. The LM2596 available in fixed output voltages of 3.3V, 5V, 12V and an adjustable output version.

Requiring a minimum number of external components, these regulators are simple to use and include internal frequency compensation and a fixed-frequency oscillator.

The LM2596HV series offers a high-efficiency replacement for popular three-terminal linear regulators. It substantially reduces the size of the heat sink, and in some cases no heat sink is required. A standard series of inductors optimized for use with the LM2596 are available from several different manufacturers. This feature greatly simplifies the design of switch-mode power supplies.

Other features include a guaranteed $\pm 4\%$ tolerance on output voltage within specified input voltages and output load conditions, and $\pm 10\%$ on the oscillator frequency. External shutdown is included, featuring 50 μA (typical) standby current. The output switch includes cycle-by-cycle current limiting, as well as thermal shutdown or full protection under fault conditions.

The LM2596HV is available in TO220T-5L and TO263-5L package.

Features

- 3.3V, 5V, 12V and adjustable output versions
- High efficiency
- Wide Input Voltage Range up to 60V for HV Version
- Guaranteed 3 A output current
- Requires only 4 external components
- 52 kHz fixed frequency internal oscillator
- TTL shutdown capability, low power standby mode
- Uses readily available standard inductors
- Thermal shutdown and current limit protection
- Adjustable version output voltage range, 1.23V to 37V $\pm 4\%$ max over line and load conditions

Application

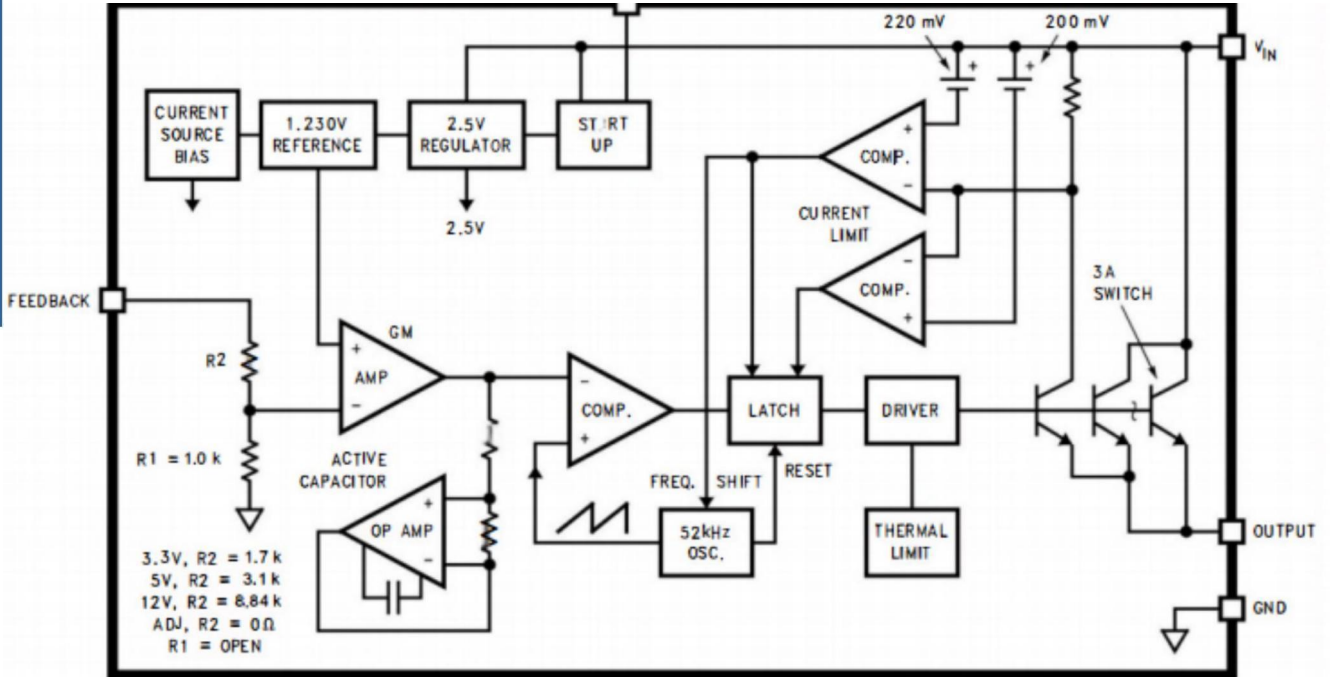
- Simple high-efficiency step-down (buck) regulator
- Efficient pre-regulator for linear regulators
- On-card switching regulators
- Positive to negative converter (Buck-Boost)



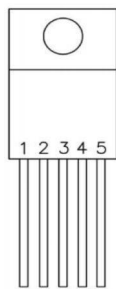
LM2596HVT-5.0

Data Sheet

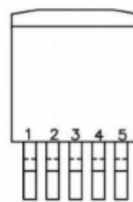
Functional Block Diagram



Pin Configuration



TO220T-5L



TO263-5L



LM2596HVT-5.0

Data Sheet

Pin Description

| PinNumber | PinName | FunctionDescription |
|-----------|----------|---|
| 1 | VIN | This is the positive input supply for the IC switching regulator. A suitable input bypass capacitor must be present at this pin to minimize voltage transients and to supply the switching currents needed by the regulator. |
| 2 | OUTPUT | Internal switch,the voltage at this pin switches between(+VINV _{SAT})and approximately-0.5V.To minimize coupling to sensitive circuitry,the PC boaed copper area connected to this pin should be kept to a minimum. |
| 3 | GND | Circuit Ground. |
| 4 | FEEDBACK | Senses the regulated output voltage to complete the feedback loop. |
| 5 | ON/OFF | Allows the switching regulator circuit to be shut down using logic level signals. |

Absolute Maximum Ratings

| Parameter Name | Symbol | Value | Unit |
|---|-------------------|----------------------------|------|
| Maximum Supply Voltage | V _{IN} | 45 | V |
| ON/OFF pin Input Voltage | ON/OFF | $-0.3 \leq V \leq +V_{IN}$ | V |
| Output Voltage to Ground (steady state) | V _{OUT} | -1 | V |
| Power Dissipation | P _{DMAX} | Internally Limited | |
| Storage Temperature Range | T _{stg} | -65~+150 | |
| Maximum Junction Temperature | T _{JA} | 150 | °C |
| ESD Susceptibility(Human Body Model) | ESD | 2 | kV |
| Lead Temperature (Soldering,10 Second) | T _L | 260 | |



LM2596HVT-5.0

Data Sheet

Electro-Optical Characteristics

(unless otherwise specified: $T_j=25^{\circ}\text{C}$)

| Parameter | Symbol | Test Conditions | Min | Typ | Max | Units |
|------------------------------|------------|---|-----|-----|-----|---------------|
| Device Parameters | | | | | | |
| Feedback Bias Current | I_b | Adjustable version only, $V_{OUT}=5V$ | | 50 | 100 | nA |
| Oscillator Frequency | f_o | (Note1) | 47 | 52 | 58 | kHz |
| VSAT Saturation Voltage | V_{SAT} | $I_{OUT}=3A$ | | 1.4 | 1.8 | V |
| Max.Duty Cycle(ON) | DC | | 93 | 98 | | % |
| Current Limit | I_{CL} | (Note1) | 4.2 | 5.8 | 6.9 | A |
| Output Leakage CurrentmA | I_L | Output=0V | | | 2 | mA |
| | | Output=-1V | | | 30 | mA |
| Quiescent Current | I_Q | | | | 10 | mA |
| Standby Quiescent Current | I_{STBY} | ON/OFF | | | 200 | μA |
| ON/OFF Control | | | | | | |
| ON/OFF Pin Logic Input Level | V_{IH} | $V_{OUT}=0V$ | 2.0 | | | V |
| | V_{IL} | $V_{OUT}=\text{nominal output voltage}$ | | | 0.8 | V |
| ON/OFF Pin Input Current | I_{IH} | ON/OFF pin=5V (OFF) | | 12 | 30 | μA |
| | I_{IL} | ON/OFF pin=0V (ON) | | 0 | 10 | μA |

Note1:The oscillator frequency reduces to approximately 11 kHz in the event of an output short or an overload which causes the regulated output voltage to drop approximately 40% from the nominal output voltage. This self protection feature lowers the average power dissipation of the IC by lowering the minimum duty cycle from 59% down to approximately 2%. Output pin sourcing current. No diode, inductor or capacitor connected to output.



LM2596HVT-5.0

Data Sheet

| ParameterName | Symbol | Test Conditions | Min | Typ | Max | Units |
|----------------|------------------|--|-------|-------|-------|-------|
| LM2596HV-3.3V | | | | | | |
| Output Voltage | V _{OUT} | V _{IN} =12V, I _O =500mA | 3.234 | 3.3 | 3.366 | V |
| | | 6V ≤ V _{IN} ≤ 40V 0.5A ≤ I _{LOAD} ≤ 3A | 3.168 | 3.3 | 3.450 | V |
| Efficiency | η | V _{IN} =12V, I _{LOAD} =3A | | 75 | | % |
| LM2596HV-5.0V | | | | | | |
| Output Voltage | V _{OUT} | V _{IN} =12V, I _O =500mA | 4.90 | 5.00 | 5.10 | V |
| | | 8V ≤ V _{IN} ≤ 40V 0.5A ≤ I _{LOAD} ≤ 3A | 4.80 | 5.00 | 5.20 | V |
| Efficiency | η | V _{IN} =12V, I _{LOAD} =3A | | 77 | | % |
| LM2596HV-12V | | | | | | |
| Output Voltage | V _{OUT} | V _{IN} =25V, I _O =500mA | 11.76 | 12.00 | 12.24 | V |
| | | 15V ≤ V _{IN} ≤ 40V 0.5A ≤ I _{LOAD} ≤ 3A | 11.52 | 12.00 | 12.48 | V |
| Efficiency | η | V _{IN} =25V, I _{LOAD} =3A | | 88 | | % |

| ParameterName | Symbol | Test Conditions | Min | Typ | Max | Units |
|----------------|------------------|---|-------|-------|-------|-------|
| LM2596HV-ADJ | | | | | | |
| Output Voltage | V _{OUT} | V _{IN} =12V, I _O =500mA, V _{OUT} =5V | 1.217 | 1.230 | 1.243 | V |
| | | 6V ≤ V _{IN} ≤ 40V, V _{OUT} =5V 0.5A ≤ I _{LOAD} ≤ 3A | 1.193 | 1.230 | 1.267 | V |
| Efficiency | η | V _{IN} =12V, I _{LOAD} =3A, V _{OUT} = 5V | | 77 | | % |

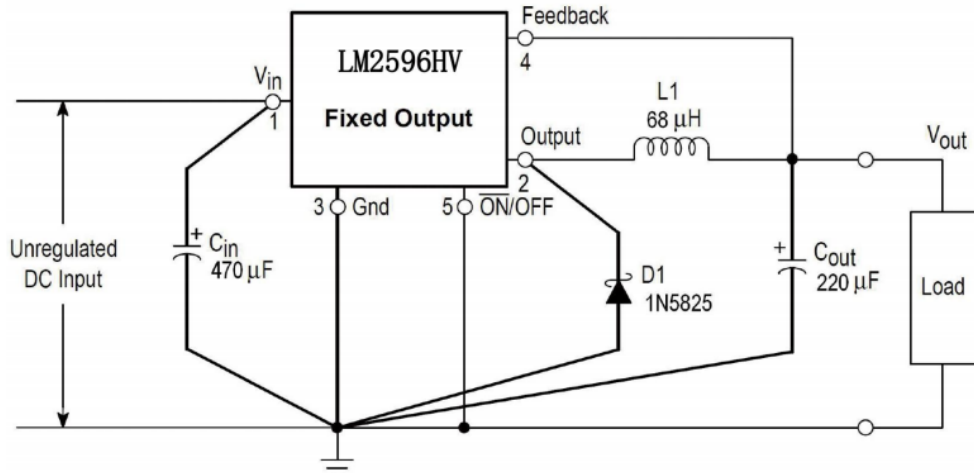


LM2596HVT-5.0

Data Sheet

Test Circuit

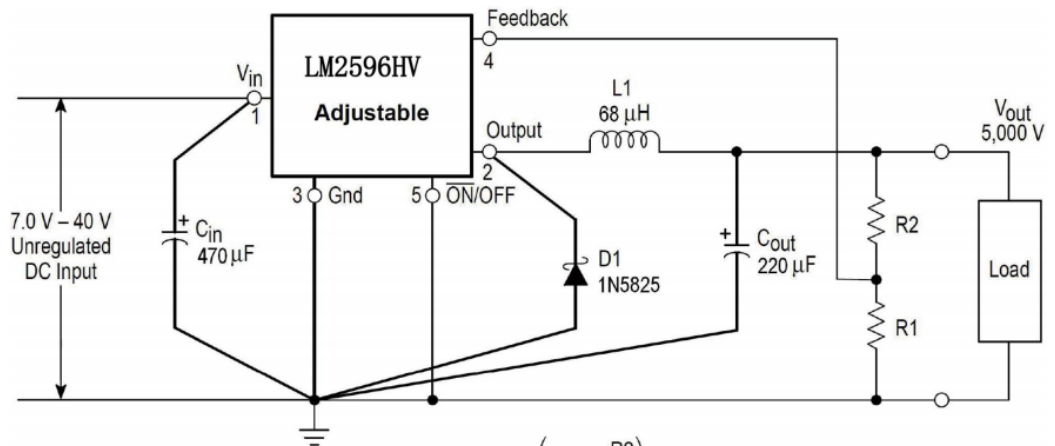
Fixed Output Voltage Versions



470

- C_{in} - 470 μF, 100 V, Aluminium Electrolytic
- C_{out} - 220 μF, 25 V, Aluminium Electrolytic
- D1 - Schottky, 1N5825
- L1 - 68 μH, L38
- R1 - 2.0 k, 0.1%
- R2 - 6.12 k, 0.1%

Adjustable output voltage versions



$$V_{out} = V_{ref} \left(1.0 + \frac{R2}{R1} \right)$$

$$R2 = R1 \left(\frac{V_{out}}{V_{ref}} - 1.0 \right)$$

Where $V_{ref} = 1.23 \text{ V}$, $R1$ between 1.0 k and 5.0 k



LM2596HVT-5.0

Data Sheet

current rating of 75% of the DC load current would be a good choice for a conservative design. The capacitor voltage rating must be at least 1.25 times greater than the maximum input voltage, and often a much higher voltage capacitor is needed to satisfy the RMS current requirements.

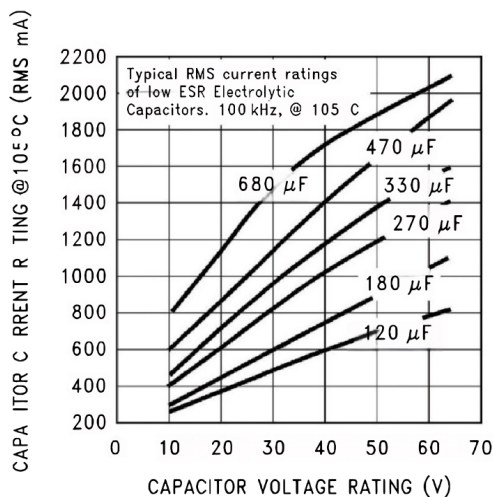
Because of their small size and excellent performance, surface mount solid tantalum capacitors are often used for input bypassing, but several precautions must be observed. A small percentage of solid tantalum capacitors can short if the inrush current rating is exceeded. This can happen at turn on when the input voltage is suddenly applied, and of course, higher input voltages produce higher inrush currents. Several capacitor manufacturers do a 100% surge current testing on their products to minimize this potential problem. If high turn on currents are expected, it may be necessary to limit this current by adding either some resistance or inductance before the tantalum capacitor, or select a higher voltage capacitor. As with aluminum electrolytic capacitors, the RMS ripple current rating must be sized to the load current.

With most electrolytic capacitors, the capacitance value decreases and the ESR increases with lower temperatures and age. Paralleling a ceramic or solid tantalum capacitor will increase the regulator stability at cold temperatures. For maximum capacitor operating lifetime, the capacitor's RMS ripple current rating should be greater than

$$1.2 \times \left(\frac{t_{ON}}{T} \right) \times I_{LOAD}$$

Where $\frac{t_{ON}}{T} = \frac{V_{OUT}}{V_{IN}}$ for a buck regulator

and $\frac{t_{ON}}{T} = \frac{|V_{OUT}|}{|V_{OUT}| + V_{IN}}$ for a buck boost



LM2596HVT-5.0

Data Sheet

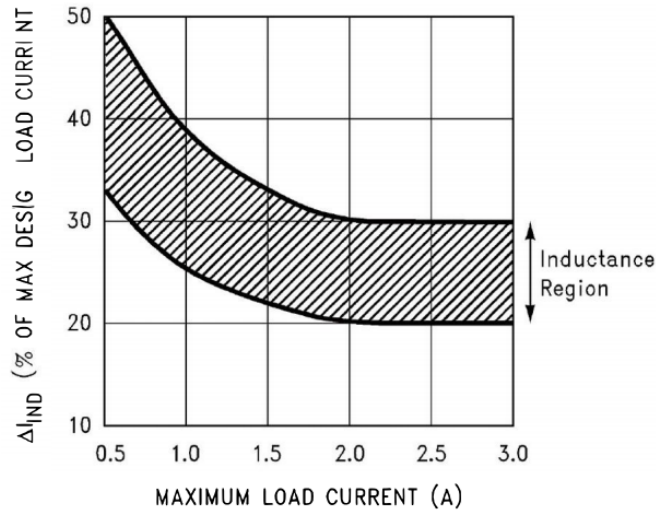
Inductor Selection(L1)

All switching regulators have two basic modes of operation: continuous and discontinuous. The difference between the two types relates to the inductor current, whether it is flowing continuously, or if it drops to zero for a period of time in the normal switching cycle. Each mode has distinctively different operating characteristics, which can affect the regulator performance and requirements. Most switcher designs will operate in the discontinuous mode when the load current is low.

The LM2596HV can be used for both continuous and discontinuous modes of operation.

In many cases the preferred mode of operation is the continuous mode. It offers greater output power, lower peak switch, inductor and diode currents, and can have lower output ripple voltage. But it does require larger inductor values to keep the inductor current flowing continuously, especially at low output load currents and/or high input voltages.

To simplify the inductor selection process, an inductor selection guide (nomograph) was designed. This guide assumes that the regulator is operating in the continuous mode, and selects an inductor that will allow a peak-to-peak inductor ripple current to be a certain percentage of the maximum design load current. This peak-to-peak inductor ripple current percentage is not fixed, but is allowed to change as different design load currents are selected.



By allowing the percentage of inductor ripple current to increase for low load currents, the inductor value and size can be kept relatively low.

When operating in the continuous mode, the inductor current waveform ranges from a triangular to a sawtooth type of waveform (depending on the input voltage), with the average value of this current waveform equal to the DC output load current.

Inductors are available in different styles such as pot core, toroid, E-core, bobbin core, etc., as well as different core materials, such as ferrites and powdered iron. The least expensive, the bobbin, rod or stick core, consists of wire wound on a ferrite bobbin.

This type of construction makes for an inexpensive inductor, but since the magnetic flux is not completely contained within the core, it generates more Electro-Magnetic Interference (EMI).

This magnetic flux can induce voltages into nearby printed circuit traces, thus causing problems with both the switching regulator operation and nearby sensitive circuitry, and can give incorrect scope readings because of induced voltages in the scope probe.



LM2596HVT-5.0

Data Sheet

The inductors listed in the selection chart include ferrite E-core construction for Schott, ferrite bobbin core for Renco and Coilcraft, and powdered iron toroid for Pulse Engineering.

Exceeding an inductor's maximum current rating may cause the inductor to overheat because of the copper wire losses, or the core may saturate. If the inductor begins to saturate, the inductance decreases rapidly and the inductor begins to look mainly resistive (the DC resistance of the winding). This can cause the switch current to rise very rapidly and force the switch into a cycle-by-cycle current limit, thus reducing the DC output load current. This can also result in overheating of the inductor and/or the LM2596HV. Different inductor types have different saturation characteristics, and this should be kept in mind when selecting an inductor.

The inductor manufacturer's data sheets include current and energy limits to avoid inductor saturation.

Feed-forward Capacitor(C_{FF} , Adjustable Output Voltage Version)

A Feed-forward Capacitor C_{FF} , shown across R_2 is used when the output voltage is greater than 10V or when C_{OUT} has a very low ESR. This capacitor adds lead compensation to the feedback loop and increases the phase margin for better loop stability.

Catch Diode(D1)

Buck regulators require a diode to provide a return path for the inductor current when the switch is off. This must be a fast diode and must be located close to the LM2596HV using short leads and short printed circuit traces. Because of their fast switching speed and low forward voltage drop, Schottky diodes provide the best efficiency, especially in low output voltage switching regulators (less than 5V). Ultra-fast Recovery, or High-Efficiency rectifiers are also a good choice, but some types with an abrupt turn off characteristic may cause instability or EMI problems. Ultra-fast recovery diodes typically have reverse recovery times of 50ns or less. Rectifiers such as the IN5400 series are much too slow and should not be used.

Output Capacitor(C_{OUT})

An output capacitor is required to filter the output and provide regulator loop stability. Low impedance or low ESR Electrolytic or solid tantalum capacitors designed for switching regulator applications must be used. When selecting an output capacitor, the important capacitor parameters are: the 100kHz Equivalent Series Resistance (ESR), the RMS ripple current rating, voltage rating, and capacitance value. For the output capacitor, the ESR value is the most important parameter.

The output capacitor requires an ESR value that has an upper and lower limit. For low output ripple voltage, a low ESR value is needed. This value is determined by the maximum allowable output ripple voltage, typically 1% to 2% of the output voltage. But if the selected capacitor's ESR is extremely low, there is a possibility of an unstable feedback loop, resulting in an oscillation at the output. Using the capacitors listed in the tables, or similar types, will provide design solutions under all conditions.



LM2576HVT-5.0

Data Sheet

An aluminum electrolytic capacitor's ESR value is related to the capacitance value and its voltage rating. In most cases, higher voltage electrolytic capacitors have lower ESR values. Often, capacitors with much higher voltage ratings may be needed to provide the low ESR values required for low output ripple voltage.

The output capacitor for many different switcher designs often can be satisfied with only three or four different capacitor values and several different voltage ratings.

Electrolytic capacitors are not recommended for temperatures below -25°C. The ESR rises dramatically at cold temperatures and typically rises 3X @ -25 and as much as 10X at -40.

Solid tantalum capacitors have a much better ESR spec for cold temperatures and are recommended for temperatures below -25°C.

Output Voltage Ripple and Transients

The output voltage of a switching power supply operating in the continuous mode will contain a sawtooth ripple voltage at the switcher frequency, and may also contain short voltage spikes at the peaks of the sawtooth waveform.

The output ripple voltage is a function of the inductor sawtooth ripple current and the ESR of the output capacitor. A typical output ripple voltage can range from approximately 0.5% to 3% of the output voltage. To obtain low ripple voltage, the ESR of the output capacitor must be low, however, caution must be exercised when using extremely low ESR capacitors because they can affect the loop stability, resulting in oscillation problems. If very low output ripple voltage is needed (less than 20 mV), a post ripple filter is recommended.

The inductance required is typically between 1µH and 5µH, with low DC resistance, to maintain good load regulation. A low ESR output filter capacitor is also required to assure good dynamic load response and ripple reduction. The ESR of this capacitor may be as low as desired, because it is out of the regulator feedback loop. When observing output ripple with a scope, it is essential that a short, low inductance scope probe ground connection be used. Most scope probe manufacturers provide a special probe terminator which is soldered onto the regulator board, preferable at the output capacitor. This provides a very short scope ground thus eliminating the problems associated with the 3 inch ground lead normally provided with the probe, and provides a much cleaner and more accurate picture of the ripple voltage waveform.

The voltage spikes are caused by the fast switching action of the output switch and the diode, and the parasitic inductance of the output filter capacitor, and its associated wiring. To minimize these voltage spikes, the output capacitor should be designed for switching regulator applications, and the lead lengths must be kept very short. Wiring inductance, stray capacitance, as well as the scope probe used to evaluate these transients, all contribute to the amplitude of these spikes.

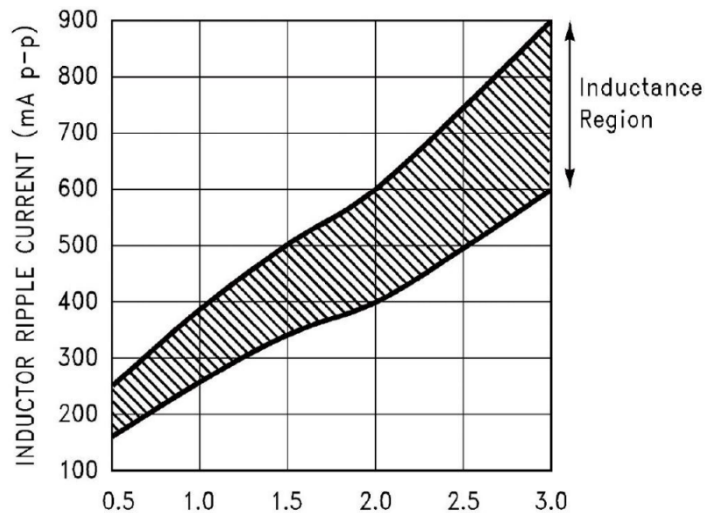


LM2576HVT-5.0

Data Sheet

When a switching regulator is operating in the continuous mode, the inductor current waveform ranges from a triangular to a sawtooth type of waveform (depending on the input voltage). For a given input and output voltage, the peak-to-peak amplitude of this inductor current waveform remains constant. As the load current increases or decreases, the entire sawtooth current waveform also rises and falls. The average value (or the center) of this current waveform is equal to the DC load current.

If the load current drops to a low enough level, the bottom of the sawtooth current waveform will reach zero, and the switcher will smoothly change from a continuous to a discontinuous mode of operation. Most switcher designs (irregardless how large the inductor value is) will be forced to run discontinuous if the output is lightly loaded. This is a perfectly acceptable mode of operation.



In a switching regulator design, knowing the value of the peak-to-peak inductor ripple current (I_{IND}) can be useful for determining a number of other circuit parameters. Parameters such as, peak inductor or peak switch current, minimum load current before the circuit becomes discontinuous, output ripple voltage and output capacitor ESR can all be calculated from the peak-to-peak I_{IND} . When the inductor nomographs are used to select an inductor value, the peak-to-peak inductor ripple current can immediately be determined. The range of (I_{IND}) that can be expected for different load currents. The curve also shows how the peak-to-peak inductor ripple current (I_{IND}) changes as you go from the lower border to the upper border (for a given load current) within an inductance region. The upper border represents a higher input voltage, while the lower border represents a lower input voltage.

These curves are only correct for continuous mode operation, and only if the inductor selection guides are used to select the inductor value. Consider the following example:

$$V_{OUT} = 5V, \text{ maximum load current of } 2.5A$$

$$V_{IN} = 12V, \text{ nominal, varying between } 10V \text{ and } 16V$$



LM2576HVT-5.0

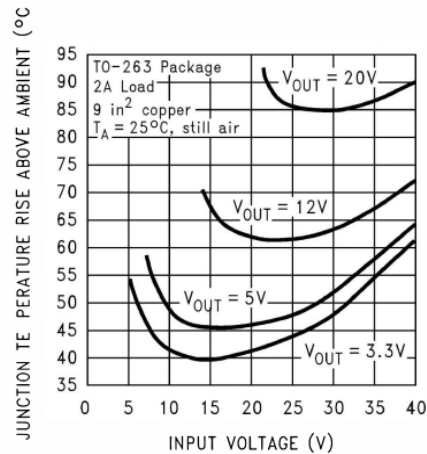
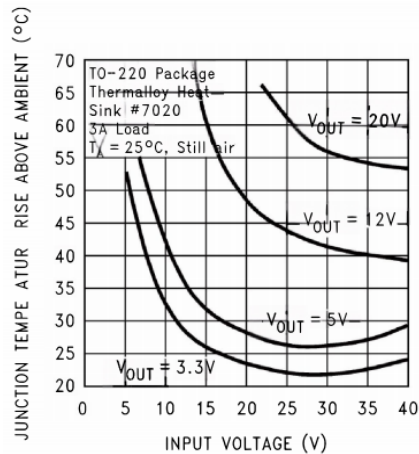
Data Sheet

These temperature rise numbers are all approximate and there are many factors that can affect these temperatures. Higher ambient temperatures require more heat sinking. The TO263-5L surface mount package tab is designed to be soldered to the copper on a printed circuit board. The copper and the board are the heat sink for this package and the other heat producing components, such as the catch diode and inductor. The PC board copper area that the package is soldered to should be at least 0.4 in², and ideally should have 2 or more square inches of 2 oz. (0.0028 in.) copper. Additional copper area improves the thermal characteristics, but with copper areas greater than approximately 6 in², only small improvements in heat dissipation are realized. If further thermal improvements are needed, double sided, multilayer PC board with large copper areas and/or airflow are recommended.

LM2596HV (TO263 package) junction temperature rise above ambient temperature with a 2A load for various input and output voltages. This data was taken with the circuit operating as a buck switching regulator with all components mounted on a PC board to simulate the junction temperature under actual operating conditions. This curve can be used for a quick check for the approximate junction temperature for various conditions, but be aware that there are many factors that can affect the junction temperature. When load currents higher than 2A are used, double sided or multilayer PC boards with large copper areas and/or airflow might be needed, especially for high ambient temperatures and high output voltages.

For the best thermal performance, wide copper traces and generous amounts of printed circuit board copper should be used in the board layout. (One exception to this is the output (switch) pin, which should not have large areas of copper.) Large areas of copper provide the best transfer of heat (lower thermal resistance) to the surrounding air, and moving air lowers the thermal resistance even further.

Package thermal resistance and junction temperature rise numbers are all approximate, and there are many factors that will affect these numbers. Some of these factors include board size, shape, thickness, position, location, and even board temperature. Other factors are, trace width, total printed circuit copper area, copper thickness, single- or double-sided, multilayer board and the amount of solder on the board. The effectiveness of the PC board to dissipate heat also depends on the size, quantity and spacing of other components on the board, as well as whether the surrounding air is still or moving. Furthermore, some of these components such as the catch diode will add heat to the PC board and the heat can vary as the input voltage changes. For the inductor, depending on the physical size, type of core material and the DC resistance, it could either act as a heat sink taking heat away from the board, or it could add heat to the board.



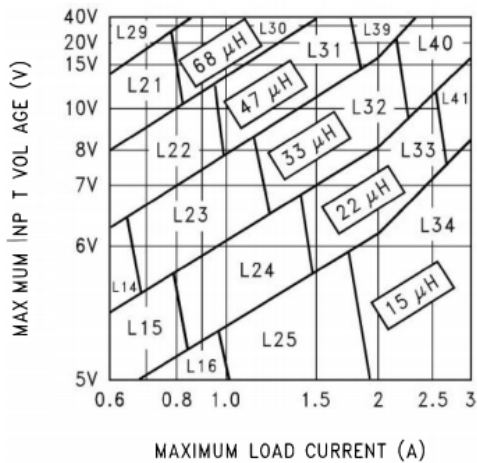
LM2576HVT-5.0

Data Sheet

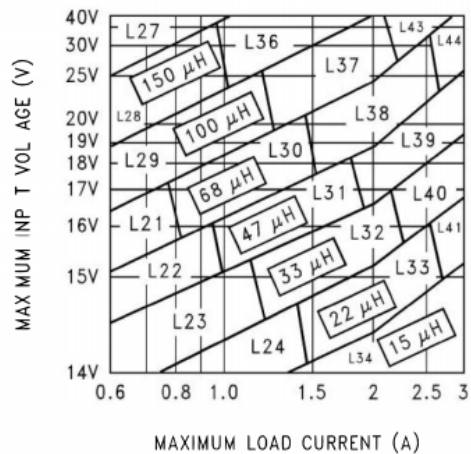
Junction Temperature Rise

| | TO220T-5L | TO263-5L |
|------------|---|---|
| Capacitors | Through hole electrolytic | Surface mount tantalum,moled"D"size |
| Inductor | Through hole,Renco | Surface mount,Pulse Engineering,68μH |
| Diode | Through hole,5A 40V,Schottky | Surface mount,5A 40V,Schottky |
| PC Board | 3square inches single sided 2oz.copper(0.0028") | 9 square inches single sided 2 oz.copper(0.0028") |

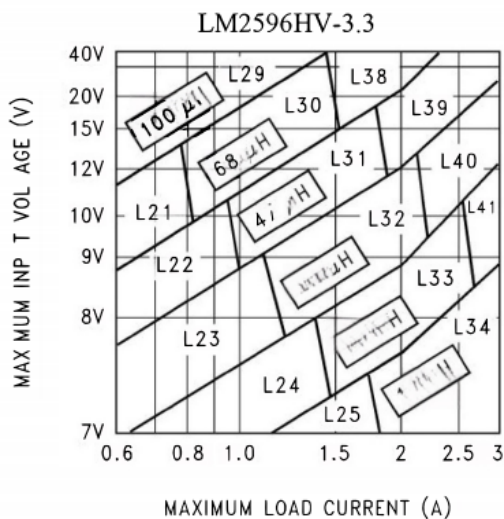
Inductor Value Selection Guides(For Continuous Mode Operation)



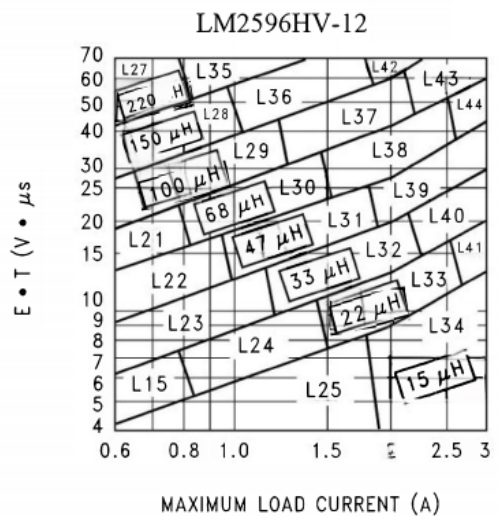
MAXIMUM LOAD CURRENT (A)



MAXIMUM LOAD CURRENT (A)



MAXIMUM LOAD CURRENT (A)



MAXIMUM LOAD CURRENT (A)

LM2596HV-5.0

LM2596HV-ADJ



LM2576HVT-5.0

Data Sheet

| | Inductance (μH) | Current(A) | Schott | | Renco | | Pulse Engineering | | Coilcraft |
|-----|-----------------|------------|--------------|---------------|---------------|---------------|-------------------|---------------|---------------|
| | | | Through Hole | Surface Mount | Through Hole | Surface Mount | Through Hole | Surface Mount | Surface Mount |
| L15 | 22 | 0.99 | 67148350 | 67148460 | RL-1284-22-43 | RL1500-22 | PE-53815 | PE-53815-S | DO3308-223 |
| L21 | 68 | 0.99 | 67144070 | 67144450 | RL-5471-5 | RL1500-68 | PE-53821 | PE-53821-S | DO3316-683 |
| L22 | 47 | 1.17 | 67144080 | 67144460 | RL-5471-6 | — | PE-53822 | PE-53822-S | DO3316-473 |
| L23 | 33 | 1.40 | 67144090 | 67144470 | RL-5471-7 | — | PE-53823 | PE-53823-S | DO3316-333 |
| L24 | 22 | 1.70 | 67148370 | 67148480 | RL-1283-22-43 | — | PE-53824 | PE-53824-S | DO3316-223 |
| L25 | 15 | 2.10 | 67148380 | 67148490 | RL-1283-15-43 | — | PE-53825 | PE-53825-S | DO3316-153 |
| L26 | 330 | 0.80 | 67144100 | 67144480 | RL-5471-1 | — | PE-53826 | PE-53826-S | DO5022P-334 |
| L27 | 220 | 1.00 | 67144110 | 67144490 | RL-5471-2 | — | PE-53827 | PE-53827-S | O5022P-224 |
| L28 | 150 | 1.20 | 67144120 | 67144500 | RL-5471-3 | — | PE-53828 | PE-53828-S | O5022P-154 |
| L29 | 100 | 1.47 | 67144130 | 67144510 | RL-5471-4 | — | PE-53829 | PE-53829-S | DO5022P-104 |
| L30 | 68 | 1.78 | 67144140 | 67144520 | RL-5471-5 | — | PE-53830 | PE-53830-S | DO5022P-683 |
| L31 | 47 | 2.20 | 67144150 | 67144530 | RL-5471-6 | — | PE-53831 | PE-53831-S | DO5022P-473 |
| L32 | 33 | 2.50 | 67144160 | 67144540 | RL-5471-7 | — | PE-53932 | PE-53932-S | DO5022P-333 |
| L33 | 22 | 3.10 | 67148390 | 67148500 | RL-1283-22-43 | — | PE-53933 | PE-53933-S | DO5022P-223 |
| L34 | 15 | 3.40 | 67148400 | 67148790 | RL-1283-15-43 | — | PE-53934 | PE-53934-S | DO5022P-153 |
| L35 | 220 | 1.70 | 67144170 | — | RL-5473-1 | — | PE-53935 | PE-53935-S | — |
| L36 | 150 | 2.10 | 67144180 | — | RL-5473-4 | — | PE-534036 | PE-54036-S | — |
| L37 | 100 | 2.50 | 67144190 | — | RL-5472-1 | — | PE-54037 | PE-54037-S | — |
| L38 | 68 | 3.10 | 67144200 | — | RL-5472-2 | — | PE-54038 | PE-54038-S | — |
| L39 | 47 | 3.50 | 67144210 | — | RL-5472-3 | — | PE-54039 | PE-54039-S | — |
| L40 | 33 | 3.50 | 67144220 | 67148290 | RL-5472-4 | — | PE-54040 | PE-54040-S | — |
| L41 | 22 | 3.50 | 67144230 | 67148300 | RL-5472-5 | — | PE-54041 | PE-54041-S | — |
| L42 | 150 | 2.70 | 67148410 | — | RL-5473-4 | — | PE-54042 | PE-54042-S | — |
| L43 | 100 | 3.40 | 67144240 | — | RL-5473-2 | — | PE-54043 | | — |
| L44 | 68 | 3.40 | 67144250 | — | RL-5473-3 | — | PE-54044 | | — |

Inductor Selection Guide



LM2576HVT-5.0

Data Sheet

Product Specification
DC-DC Power Chip

| VR | Schottky | | FastRecovery | |
|-----|-------------------------------------|----------------------------|--|--|
| | 3A | 4A-6A | 3A | 4A-6A |
| 20V | 1N5820 MBR320P SR302 | 1N5823 | The following diodes are all rated to 100V 31DF1 HER302 | The following diodes are all rated to 100V 50WF10 MUR410 HER602 |
| 30V | 1N5821 MBR330 31DQ03 SR303 | 50WQ03 1N5824 | | |
| 40V | 1N5822 MBR340 31DQ04 SR304 | MBR340 50WQ04 1N5825 | | |
| 50V | MBR350 31DQ05 SR305 | 50WQ05 | | |
| 60V | MBR360 DQ06 SR306 | 50WR06 50SQ060 | | |

Diode selection Guide



LM2576HVT-5.0

Data Sheet

Outline dimensions

