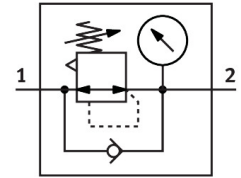


Pressure regulator MS6N-LR-1/2-D5-AS

Part number: 531443

FESTO



 General operating condition

Data sheet

Feature	Value
Size	6
Series	MS
Actuator lock	Rotary knob with detent can be closed with accessories
Mounting position	Any
Structural design	Pressure regulator with pressure gauge
Controller function	Outlet pressure constant With primary pressure compensation With secondary exhausting
Symbol	00991558
Pressure gauge	with pressure gauge
Operating pressure	0.8 bar ... 20 bar
Pressure regulation range	0.3 bar ... 4 bar
Max. pressure hysteresis	0.25 bar
Standard nominal flow rate	7500 l/min
Operating medium	Compressed air as per ISO 8573-1:2010 [7:4:4] Inert gas
Information on operating and pilot media	Operation with oil lubrication possible (required for further use)
Corrosion resistance class (CRC)	2 - Moderate corrosion stress
LABS (PWIS) conformity	VDMA24364-B1/B2-L
Storage temperature	-10 °C ... 60 °C
For use in the food industry	See supplementary material information
Temperature of medium	-10 °C ... 60 °C
Ambient temperature	-10 °C ... 60 °C
Product weight	730 g
Type of mounting	Optionally: Front panel mounting Line installation With accessories
Pneumatic connection 1	1/2 NPT
Pneumatic connection 2	1/2 NPT
Note on materials	RoHS-compliant
Material of operator panel	PA POM
Seals material	NBR
Housing material	Die-cast aluminum

Feature	Value
Diaphragm material	NBR
Separating disc material	POM