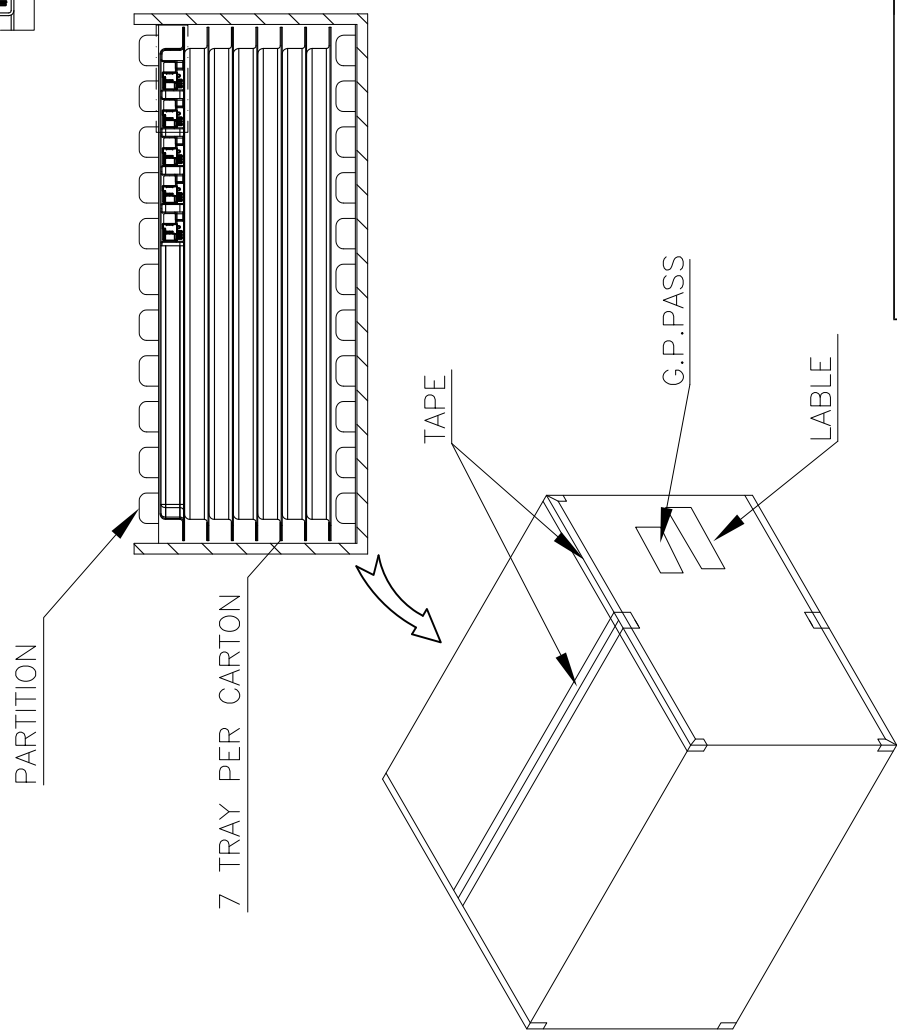
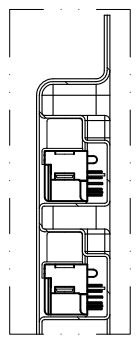


D C B A



1. MATERIAL:
TRAY: PVC
BOX: CORRUGATED FIBER.
2. DIMENSION:
TRAY: SEE PAGE 3,4
BOX: L=326mm, W=245mm, H=140mm

REVISIONS			
REV	DESCRIPTION	DATE	BY
1	SEE SHEET 1.	-	-

LOC	DW	DIST	-
F	LTR	DATE	-
APVD		DWN	-

5.20 Kg	3.55 Kg	60	7	420
GROSS WEIGHT	NET WEIGHT	PCS/TRAY	TRAYS/BOX	QUANTITY

STE TE Connectivity

DVI-I ANALOG&DIGITAL CONNECTOR, RCPT. RIGHT-ANGLE, W/O SCREW

APVD	NAME
PRODUCT SPEC	
APPLICATION SPEC	
WEIGHT	

THIS DRAWING IS A CONTROLLED DOCUMENT.

DIMENSIONS: MM

TOLERANCES UNLESS OTHERWISE SPECIFIED:

0. PLC	±
1. PLC	±
2. PLC	±
3. PLC	±
4. PLC	±

ANGLES: ±

FINISH: ±

MATERIAL: SEE NOTE

SEE NOTE

SIZE: A300779

DRAWING NO: C=2041273

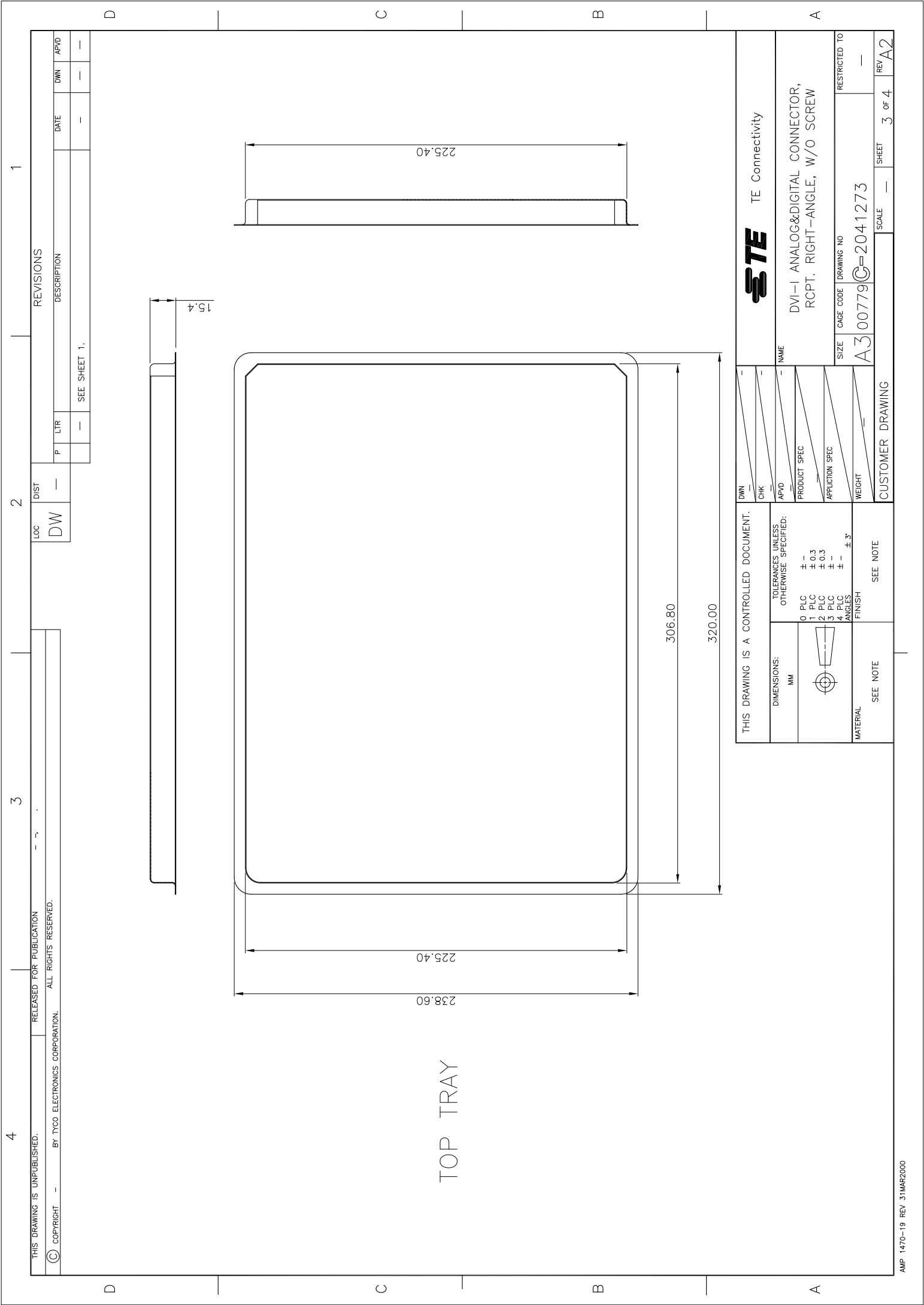
RESTRICTED TO: -

CUSTOMER DRAWING

SCALE: -

SHEET: 2 of 4

REV: A2



THIS DRAWING IS UNPUBLISHED.
 © COPYRIGHT - BY TYCO ELECTRONICS CORPORATION.
 RELEASED FOR PUBLICATION
 ALL RIGHTS RESERVED.

LOC	DIST	REVISONS		
DW	---	DESCRIPTION	DATE	APVD
		SEE SHEET 1.		

P	LTR	DWN
---	---	---

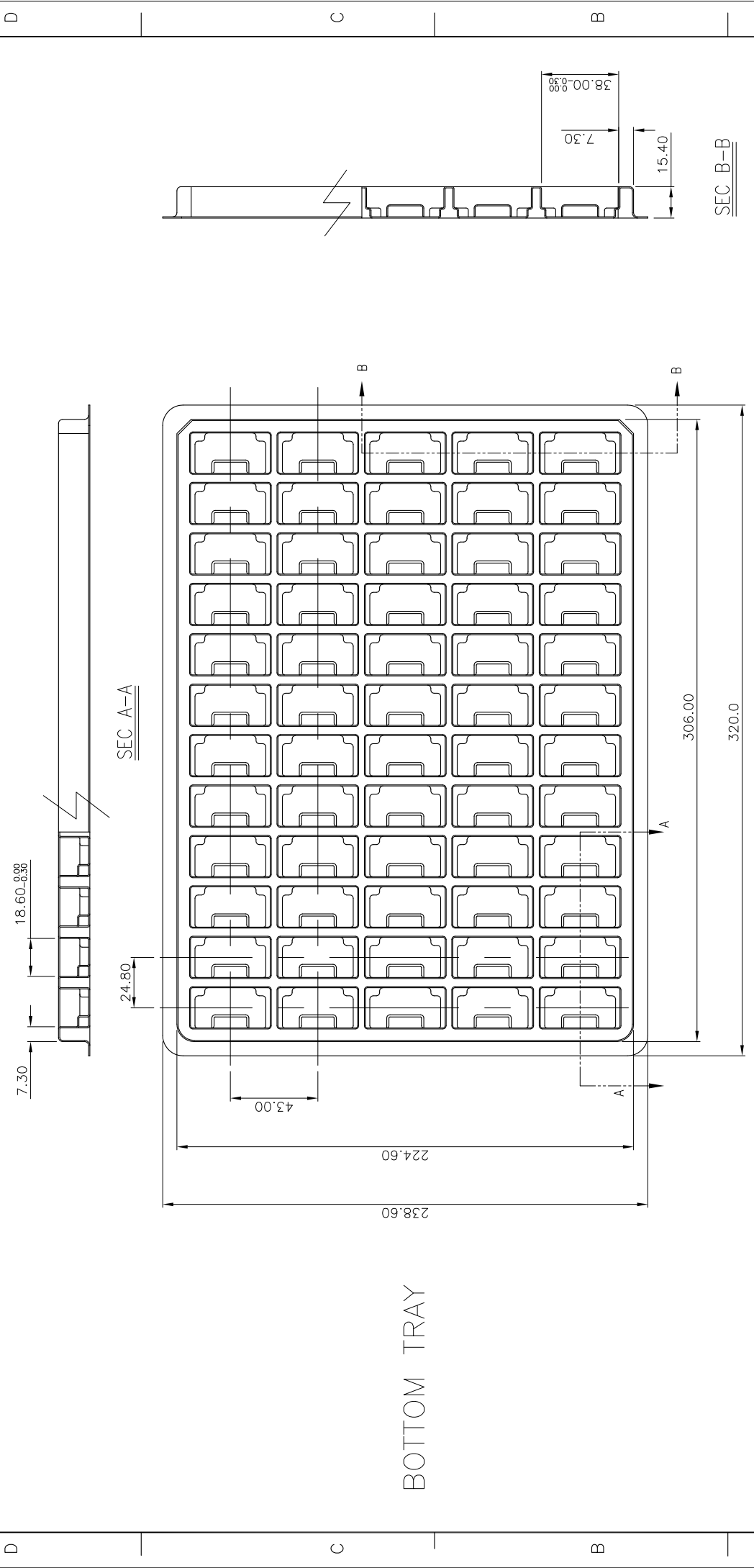
1	
---	--

TOP TRAY

THIS DRAWING IS A CONTROLLED DOCUMENT.	
DIMENSIONS: MM	TOLERANCES, UNLESS OTHERWISE SPECIFIED:
	0. PLC ±
	1. PLC ± 0.3
	2. PLC ± 0.3
	3. PLC ±
MATERIAL	FINISH
SEE NOTE	SEE NOTE

DWN	---
CHK	---
APVD	---
PRODUCT SPEC	---
APPLICATION SPEC	---
WEIGHT	---

STE TE Connectivity	
DVI-I ANALOG&DIGITAL CONNECTOR, RCPT. RIGHT-ANGLE, W/O SCREW	
SIZE	DRAWING NO
A3	00779
RESTRICTED TO	
A3 00779 C=2041273	
SCALE	SHEET
---	3 of 4
REV	A2



STE TE Connectivity

DVI-I ANALOG&DIGITAL CONNECTOR, RCPT. RIGHT-ANGLE, W/O SCREW

DWN	—	—	—
CHK	—	—	—
APVD	—	—	—
PRODUCT SPEC	—		
APPLICATION SPEC	—		
WEIGHT	—		

NAME

RESTRICTED TO

SIZE A3

CAGE CODE A300779

DRAWING NO C=2041273

SCALE —

SHEET 4 of 4

REV A2

CUSTOMER DRAWING

SEE NOTE

SEE NOTE

TOLERANCES, UNLESS OTHERWISE SPECIFIED:

0	PLC	±
1	PLC	± 0.3
2	PLC	± 0.3
3	PLC	±
4	PLC	±
ANGLES		± 3°

DIMENSIONS: MM

MATERIAL

FINISH