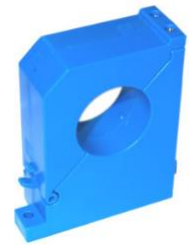
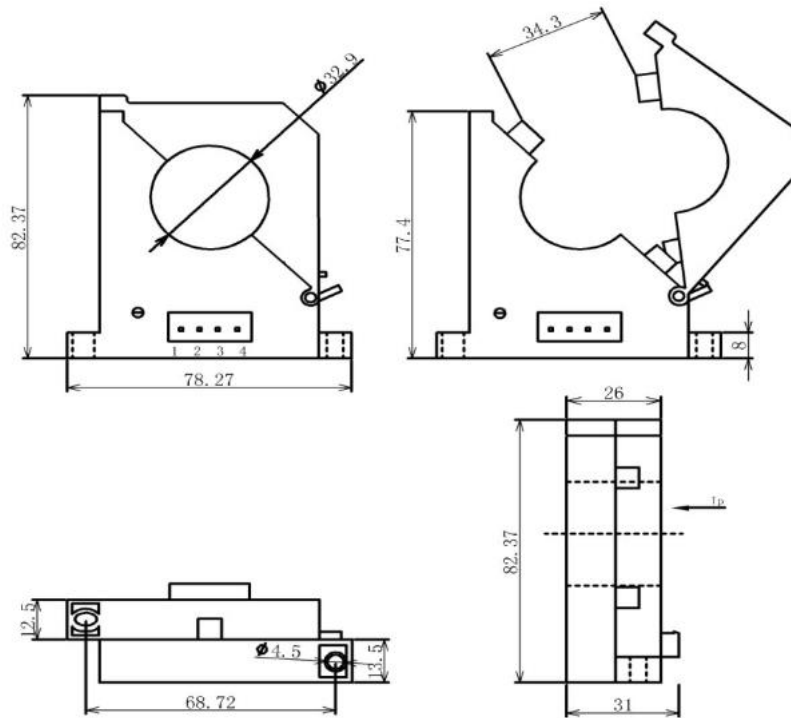


D-FS050MK 开合式直流漏电流传感器



技术参数/Electrical characteristics				
	型号/Type	D-FS050MK		D-FS100MK
I	原边额定输入电流 Primary nominal input current	50		100 mA
I _p	原边电流测量范围 Measuring range of primary current	0~±75		0~±120 mA
V	副边额定输出电压 Rated output voltage			±5V(±1%) V
V _{oc}	电源电压 Supply voltage			±12V(±5%) V
I _c	电流消耗 Static power consumption	V=±12V		<20 mA
V	绝缘电压 Insulation voltage			2.5KV有效值/50Hz/1分钟 2.5KV RMS /50Hz/1 min
e _L	线性度 Linearity			<1 %FS
V _o	零点失调电压 Offset voltage	T _a =25°C	<±50	T=25°C <±25 mV
V _{ow}	磁失调电压 Residual voltage	I→0		<±20 mV
V _{or}	失调电压温漂 Thermal drift of V ₀	I=0 T _A =-10~+60°C		<±2.5 mV/°C
T _A	工作环境温度 Ambient operating temperature			-10~+60 °C
T _s	贮存环境温度 Ambient storage temperature			-20~+70 °C
R	负载电阻 Load resistance			≥10K Ω

外形尺寸(mm)/Dimensions of drawing(mm)



引脚说明 Elucidation: 1:+12V 2:-12V 3:Vout 4:GND(电源地) 0 FS: 零点调节 Zero adjustmen

使用说明/Remarks:

1、错误的接线可能导致传感器损坏。

Incorrect wiring may cause damage to the sensor

2、传感器通电后，当被测电流从传感器箭头方向穿过，即可在输出端测得同相电压值。

After the sensor is powered on, when the measured current passes through the arrow direction of the sensor, the in-phase voltage value can be measured at the output end.

2、传感器的输出幅度可根据用户需求进行适当的调节。

The output amplitude of the sensor can be adjusted according to the user's needs.

3、在安装过程中，传感器打开后，合上时要注意两边铁芯接口是否对齐，不能强行合上。

During the installation process, after the sensor is turned on, pay attention to whether the iron core interfaces on both sides are aligned when closing, and cannot be forcibly closed.